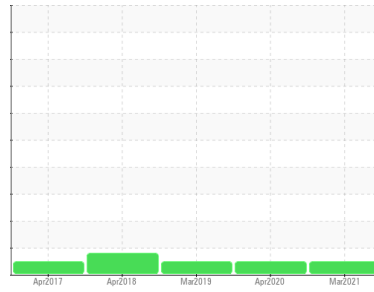




OIL ANALYSIS REPORT

Sample Rating Trend



NORMAL



Area

DSPC FINISHING MOTOR ROOM

Machine Id

F1 Main Drive Motor DE (DSC063) (S/N 1-10202)

Component

Drive End Bearing

Fluid

ISO 122 (--- GAL)

DIAGNOSIS

Recommendation

Little or no information is provided as to the component and lubricant being tested. Recommendations are therefore generic in nature and may not apply to the current application. Please forward information as to equipment type, reservoir capacity, lubricant type and any pertinent information to allow for a more accurate assessment. Resample at the next service interval to monitor. NOTE: Please provide information regarding reservoir capacity, filter type and micron rating with next sample. Please specify the brand, type, and viscosity of the oil on your next sample.

Wear

All component wear rates are normal.

Contamination

The system cleanliness is acceptable for your target ISO 4406 cleanliness code. The system and fluid cleanliness is acceptable.

Fluid Condition

The AN level is acceptable for this fluid. The condition of the oil is suitable for further service.

SAMPLE INFORMATION		method	limit/base	current	history1	history2
Sample Number	Client Info			WC0386942	WC0386978	WC0311048
Sample Date	Client Info			24 Mar 2021	07 Apr 2020	19 Mar 2019
Machine Age	hrs	Client Info		0	---	0
Oil Age	hrs	Client Info		0	0	0
Oil Changed	Client Info			N/A	N/A	N/A
Sample Status				NORMAL	NORMAL	NORMAL

CONTAMINATION		method	limit/base	current	history1	history2
Water	WC Method		>2	NEG	NEG	NEG

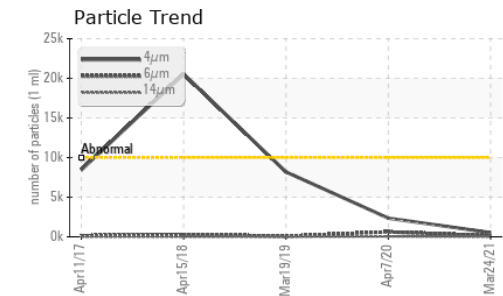
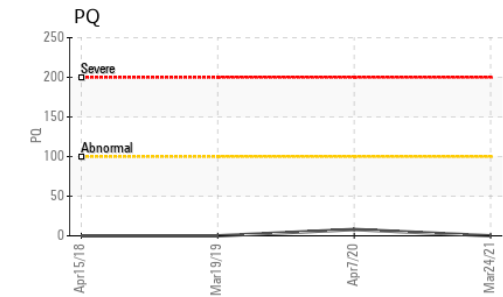
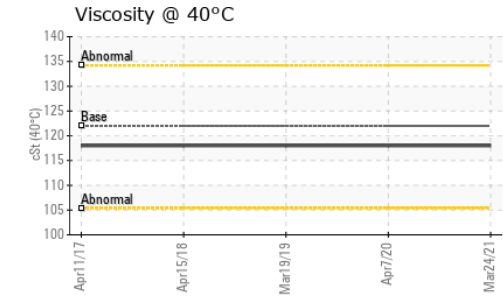
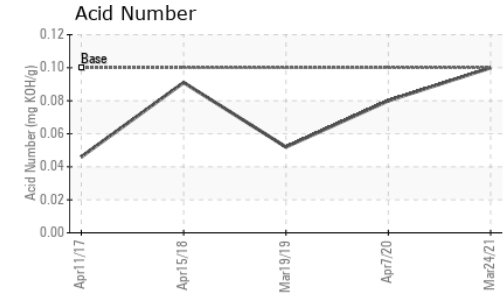
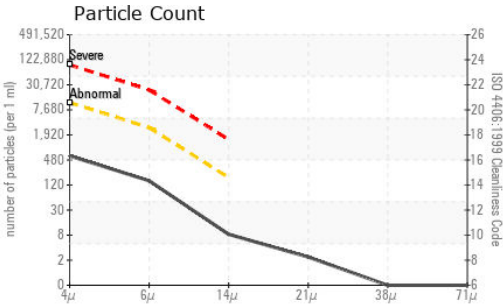
WEAR METALS		method	limit/base	current	history1	history2
PQ		ASTM D8184*		0	8	0
Iron	ppm	ASTM D5185(m)	>20	<1	0	0
Chromium	ppm	ASTM D5185(m)	>20	0	0	0
Nickel	ppm	ASTM D5185(m)	>20	<1	<1	0
Titanium	ppm	ASTM D5185(m)		0	0	0
Silver	ppm	ASTM D5185(m)		<1	<1	0
Aluminum	ppm	ASTM D5185(m)	>20	0	0	0
Lead	ppm	ASTM D5185(m)	>20	<1	<1	<1
Copper	ppm	ASTM D5185(m)	>20	4	4	4
Tin	ppm	ASTM D5185(m)	>20	5	5	6
Antimony	ppm	ASTM D5185(m)		0	<1	<1
Vanadium	ppm	ASTM D5185(m)		0	0	0
Beryllium	ppm	ASTM D5185(m)		0	0	0
Cadmium	ppm	ASTM D5185(m)		0	0	<1

ADDITIVES		method	limit/base	current	history1	history2
Boron	ppm	ASTM D5185(m)		<1	<1	0
Barium	ppm	ASTM D5185(m)		0	<1	0
Molybdenum	ppm	ASTM D5185(m)	5	0	0	0
Manganese	ppm	ASTM D5185(m)	5	0	0	<1
Magnesium	ppm	ASTM D5185(m)	20	0	0	<1
Calcium	ppm	ASTM D5185(m)	20	1	<1	1
Phosphorus	ppm	ASTM D5185(m)	120	77	80	77
Zinc	ppm	ASTM D5185(m)	120	77	79	80
Sulfur	ppm	ASTM D5185(m)	1600	1680	1663	1641
Lithium	ppm	ASTM D5185(m)		<1	<1	0

CONTAMINANTS		method	limit/base	current	history1	history2
Silicon	ppm	ASTM D5185(m)	>15	3	3	3
Sodium	ppm	ASTM D5185(m)		3	<1	1
Potassium	ppm	ASTM D5185(m)	>20	<1	<1	0



OIL ANALYSIS REPORT



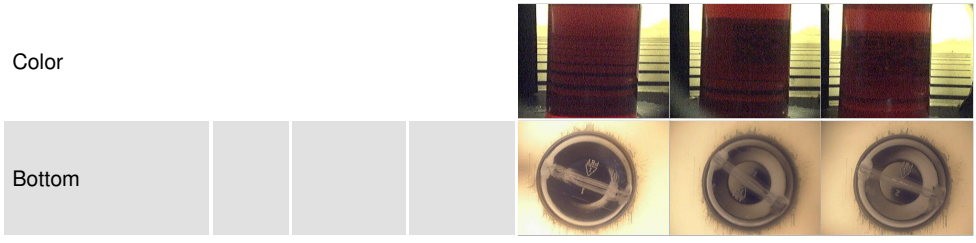
FLUID CLEANLINESS	method	limit/base	current	history1	history2
Particles >4µm	ASTM D7647	>10000	530	2352	8190
Particles >6µm	ASTM D7647	>2500	134	618	70
Particles >14µm	ASTM D7647	>160	7	44	4
Particles >21µm	ASTM D7647	>40	2	14	3
Particles >38µm	ASTM D7647	>10	0	0	0
Particles >71µm	ASTM D7647	>3	0	0	0
Oil Cleanliness	ISO 4406 (c)	>20/18/14	16/14/10	18/16/13	20/13/9

FLUID DEGRADATION	method	limit/base	current	history1	history2
Acid Number (AN)	mg KOH/g ASTM D974*	0.1	0.10	0.08	0.052

VISUAL	method	limit/base	current	history1	history2
White Metal	scalar Visual*	NONE	NONE	NONE	NONE
Yellow Metal	scalar Visual*	NONE	NONE	NONE	NONE
Precipitate	scalar Visual*	NONE	NONE	NONE	NONE
Silt	scalar Visual*	NONE	NONE	NONE	NONE
Debris	scalar Visual*	NONE	NONE	VLITE	NONE
Sand/Dirt	scalar Visual*	NONE	NONE	NONE	NONE
Appearance	scalar Visual*	NORML	NORML	NORML	NORML
Odor	scalar Visual*	NORML	NORML	NORML	NORML
Emulsified Water	scalar Visual*	>2	NEG	NEG	NEG
Free Water	scalar Visual*		NEG	NEG	NEG

FLUID PROPERTIES	method	limit/base	current	history1	history2
Visc @ 40°C	cSt ASTM D7279(m)	122	118	118	118

SAMPLE IMAGES	method	limit/base	current	history1	history2
---------------	--------	------------	---------	----------	----------



Laboratory : WearCheck - C8-1175 Appleby Line, Burlington, ON L7L 5H9
Sample No. : WC0386942
Lab Number : **02411285**
Unique Number : 5198769
Test Package : IND 2 (Additional Tests: PrtCount, TAN Man)
Received : 25 Mar 2021
Tested : 29 Mar 2021
Diagnosed : 29 Mar 2021 - Kevin Marson

ALGOMA STEEL INC. - STORES DEPT.
 301 WALLACE TERRACE
 SAULT STE MARIE, ON
 CA P6C 1K8
 Contact: Algoma Reliability
 algomareliability@algoma.com
 T: (705)206-1059
 F: (705)945-3585

To discuss this sample report, contact Customer Service at 1-800-268-2131.
 Test denoted (*) outside scope of accreditation, (m) method modified, (e) tested at external lab.
 Validity of results and interpretation are based on the sample and information as supplied.