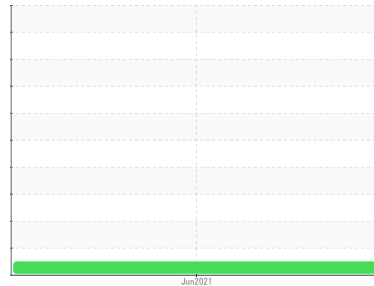




OIL ANALYSIS REPORT

Sample Rating Trend



NORMAL



Area

CHAUDIERE GS5

Machine Id

GS5-G4 RUNNER HUB

Component

Reciprocating Pump - Bearings/Crossheads

Fluid

MOBIL MOBILGEAR 600 XP 320 (100 LTR)

DIAGNOSIS

Recommendation

Resample at the next service interval to monitor.
NOTE: Please provide information regarding reservoir capacity, filter type and micron rating with next sample.

Wear

All component wear rates are normal. The direct-reading & analytical ferrographic results are normal indicating no abnormal wear in the system.

Contaminants

There is no indication of any contamination in the oil.

Oil Condition

The AN level is acceptable for this fluid. The condition of the oil is suitable for further service.

SAMPLE INFORMATION

	method	limit/base	current	history1	history2
Sample Number	Client Info		WC0488766	---	---
Sample Date	Client Info		01 Jun 2021	---	---
Machine Age	Client Info		1	---	---
Oil Age	Client Info		1	---	---
Oil Changed	Client Info		Changed	---	---
Sample Status			NORMAL	---	---

CONTAMINATION

	method	limit/base	current	history1	history2
Water	WC Method	>0.2	NEG	---	---

WEAR METALS

	method	limit/base	current	history1	history2
PQ	ASTM D8184*		2	---	---
Iron	ppm ASTM D5185(m)	>200	14	---	---
Chromium	ppm ASTM D5185(m)	>15	<1	---	---
Nickel	ppm ASTM D5185(m)	>15	<1	---	---
Titanium	ppm ASTM D5185(m)		0	---	---
Silver	ppm ASTM D5185(m)		<1	---	---
Aluminum	ppm ASTM D5185(m)	>25	<1	---	---
Lead	ppm ASTM D5185(m)	>100	<1	---	---
Copper	ppm ASTM D5185(m)	>200	7	---	---
Tin	ppm ASTM D5185(m)	>25	0	---	---
Antimony	ppm ASTM D5185(m)		0	---	---
Vanadium	ppm ASTM D5185(m)		0	---	---
Beryllium	ppm ASTM D5185(m)		0	---	---
Cadmium	ppm ASTM D5185(m)		0	---	---

ADDITIVES

	method	limit/base	current	history1	history2
Boron	ppm ASTM D5185(m)		20	---	---
Barium	ppm ASTM D5185(m)		0	---	---
Molybdenum	ppm ASTM D5185(m)		<1	---	---
Manganese	ppm ASTM D5185(m)		<1	---	---
Magnesium	ppm ASTM D5185(m)		<1	---	---
Calcium	ppm ASTM D5185(m)		6	---	---
Phosphorus	ppm ASTM D5185(m)		324	---	---
Zinc	ppm ASTM D5185(m)		4	---	---
Sulfur	ppm ASTM D5185(m)		14458	---	---
Lithium	ppm ASTM D5185(m)		<1	---	---

CONTAMINANTS

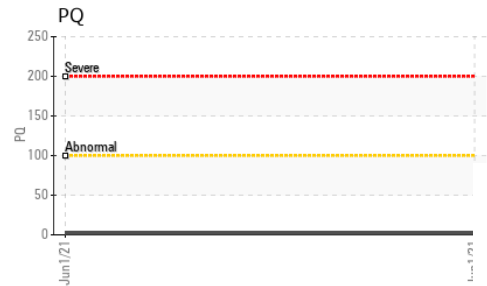
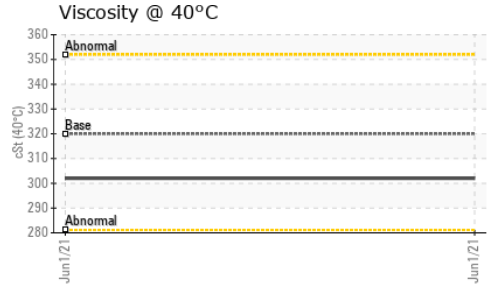
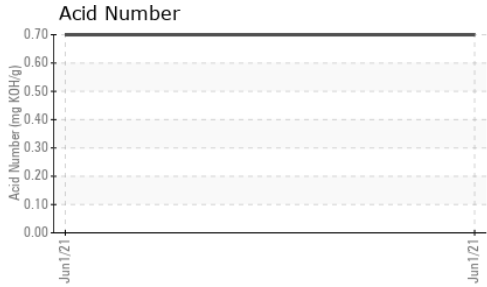
	method	limit/base	current	history1	history2
Silicon	ppm ASTM D5185(m)	>50	8	---	---
Sodium	ppm ASTM D5185(m)		<1	---	---
Potassium	ppm ASTM D5185(m)	>20	<1	---	---

FLUID DEGRADATION

	method	limit/base	current	history1	history2
Acid Number (AN)	mg KOH/g ASTM D974*		0.70	---	---



OIL ANALYSIS REPORT



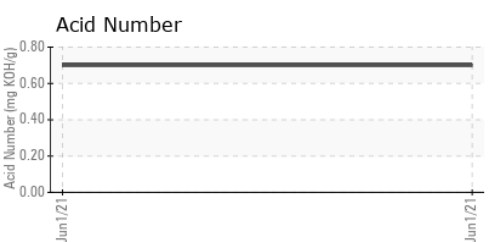
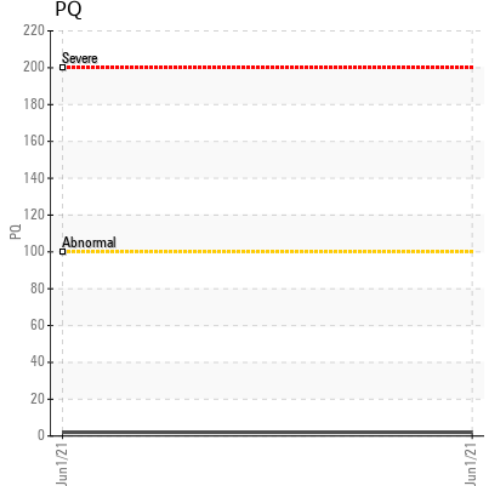
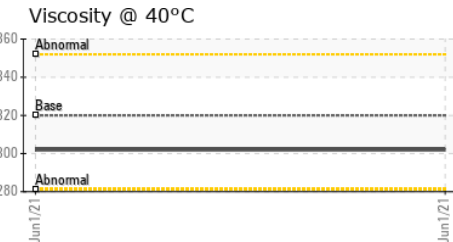
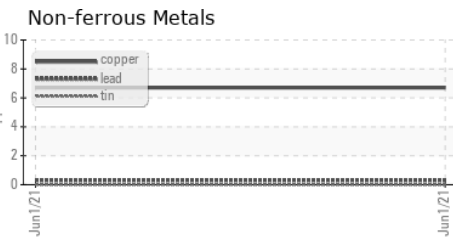
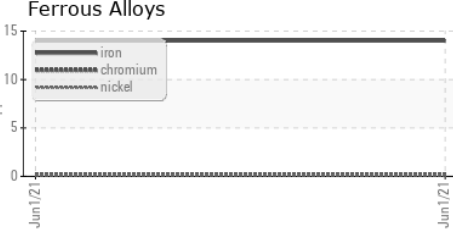
VISUAL	method	limit/base	current	history1	history2	
White Metal	scalar	Visual*	NONE	NONE	---	---
Yellow Metal	scalar	Visual*	NONE	NONE	---	---
Precipitate	scalar	Visual*	NONE	NONE	---	---
Silt	scalar	Visual*	NONE	NONE	---	---
Debris	scalar	Visual*	NONE	VLITE	---	---
Sand/Dirt	scalar	Visual*	NONE	NONE	---	---
Appearance	scalar	Visual*	NORML	NORML	---	---
Odor	scalar	Visual*	NORML	NORML	---	---
Emulsified Water	scalar	Visual*	>0.2	NEG	---	---
Free Water	scalar	Visual*		NEG	---	---

FLUID PROPERTIES	method	limit/base	current	history1	history2	
Visc @ 40°C	cSt	ASTM D7279(m)	320	302	---	---

SAMPLE IMAGES	method	limit/base	current	history1	history2
---------------	--------	------------	---------	----------	----------

Color		no image	no image
Bottom		no image	no image

GRAPHS



Laboratory : WearCheck - C8-1175 Appleby Line, Burlington, ON L7L 5H9
Sample No. : WC0488766 **Received** : 09 Jul 2021
Lab Number : **02431985** **Tested** : 12 Jul 2021
Unique Number : 5251509 **Diagnosed** : 12 Jul 2021 - Kevin Marson
Test Package : IND 3 (Additional Tests: TAN Man)

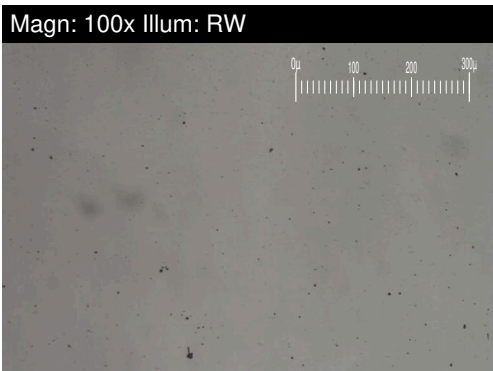
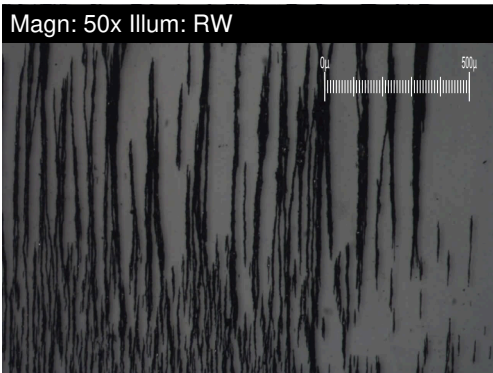
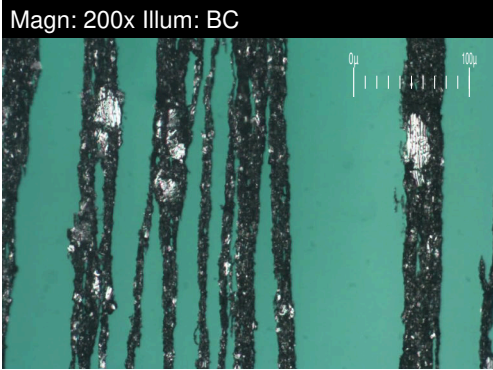
Portage Power - Energy Ottawa
 4 Booth Street
 Ottawa, ON
 CA K1R 6K8
 Contact: Cheryl Gharib
 info@portagepower.com

To discuss this sample report, contact Customer Service at 1-800-268-2131.
 Test denoted (*) outside scope of accreditation, (m) method modified, (e) tested at external lab.
 Validity of results and interpretation are based on the sample and information as supplied.

T:
 F: x

FERROGRAPHY REPORT

Area
CHAUDIERE GS5
 Machine Id
GS5-G4 RUNNER HUB
 Component
Reciprocating Pump - Bearings/Crossheads
 Fluid
MOBIL MOBILGEAR 600 XP 320 (100 LTR)

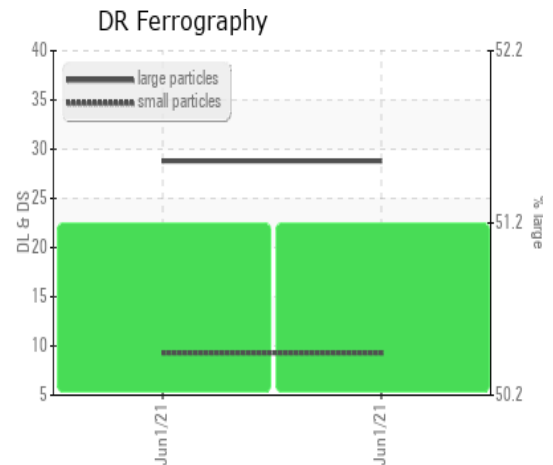


DR-FERROGRAPHY		method	limit/base	current	history1	history2
Large Particles		DR-Ferr*		28.8	---	---
Small Particles		DR-Ferr*		9.3	---	---
Total Particles		DR-Ferr*	>---	38.1	---	---
Large Particles Percentage	%	DR-Ferr*		51.2	---	---
Severity Index		DR-Ferr*		56160	---	---

FERROGRAPHY		method	limit/base	current	history1	history2
Ferrous Rubbing	Scale 0-10	ASTM D7684*		4		
Ferrous Sliding	Scale 0-10	ASTM D7684*				
Ferrous Cutting	Scale 0-10	ASTM D7684*				
Ferrous Rolling	Scale 0-10	ASTM D7684*		2		
Ferrous Break-in	Scale 0-10	ASTM D7684*				
Ferrous Spheres	Scale 0-10	ASTM D7684*				
Ferrous Black Oxides	Scale 0-10	ASTM D7684*				
Ferrous Red Oxides	Scale 0-10	ASTM D7684*				
Ferrous Corrosive	Scale 0-10	ASTM D7684*				
Ferrous Other	Scale 0-10	ASTM D7684*				
Nonferrous Rubbing	Scale 0-10	ASTM D7684*				
Nonferrous Sliding	Scale 0-10	ASTM D7684*				
Nonferrous Cutting	Scale 0-10	ASTM D7684*				
Nonferrous Rolling	Scale 0-10	ASTM D7684*				
Nonferrous Other	Scale 0-10	ASTM D7684*				
Carbonaceous Material	Scale 0-10	ASTM D7684*				
Lubricant Degradation	Scale 0-10	ASTM D7684*				
Sand/Dirt	Scale 0-10	ASTM D7684*		01		
Fibres	Scale 0-10	ASTM D7684*				
Spheres	Scale 0-10	ASTM D7684*				
Other	Scale 0-10	ASTM D7684*		01		

WEAR

All component wear rates are normal. The direct-reading & analytical ferrographic results are normal indicating no abnormal wear in the system.



This page left intentionally blank