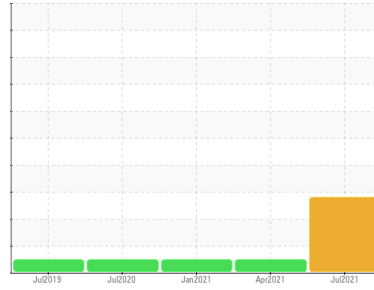




# PROBLEM SUMMARY

## Sample Rating Trend



## VISUAL METAL



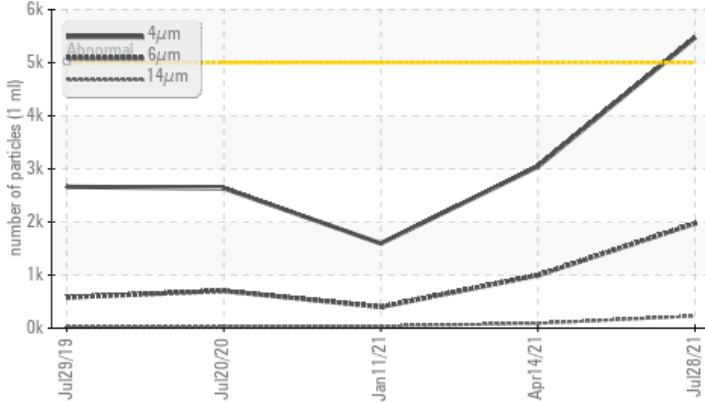
Machine Id  
**LW-G2-HPU**

Component  
**Hydraulic System**

Fluid  
**ESSO TERESSO ISO 46 (540 LTR)**

## COMPONENT CONDITION SUMMARY

### ▲ Particle Trend



## RECOMMENDATION

We advise that you check for visible metal particles in the oil. We recommend you service the filters on this component. We recommend an early resample to monitor this condition.

## PROBLEMATIC TEST RESULTS

Sample Status				ABNORMAL	NORMAL	NORMAL
Particles >4µm	ASTM D7647	>5000	▲ 5474	3045	1595	
Particles >6µm	ASTM D7647	>1300	▲ 1973	996	400	
Particles >14µm	ASTM D7647	>160	▲ 229	91	36	
Particles >21µm	ASTM D7647	>40	▲ 60	22	7	
Oil Cleanliness	ISO 4406 (c)	>19/17/14	▲ 20/18/15	19/17/14	18/16/12	
White Metal	scalar	Visual*	NONE	▲ LIGHT	NONE	NONE
PrtFilter					no image	no image

Customer Id: PICWHI  
Sample No.: WC0609848  
Lab Number: 02436330  
Test Package: IND 2



To manage this report scan the QR code

To discuss the diagnosis or test data:  
Kevin Marson +1 (289)291-4644 x4644  
[Kevin.Marson@wearcheck.com](mailto:Kevin.Marson@wearcheck.com)

To change component or sample information:  
Gloria Gonzalez +1 (289)291-4643 x4643  
[gloria.gonzalez@wearcheck.com](mailto:gloria.gonzalez@wearcheck.com)

## RECOMMENDED ACTIONS

Action	Status	Date	Done By	Description
Change Filter	MISSED	Nov 03 2021	?	We recommend you service the filters on this component.
Resample	MISSED	Nov 03 2021	?	We recommend an early resample to monitor this condition.
Check For Visual Metal	MISSED	Nov 03 2021	?	We advise that you check for visible metal particles in the oil.

## HISTORICAL DIAGNOSIS

### 14 Apr 2021 Diag: Kevin Marson

NORMAL



Resample at the next service interval to monitor. All component wear rates are normal. The system cleanliness is acceptable for your target ISO 4406 cleanliness code. The system and fluid cleanliness is acceptable. The AN level is acceptable for this fluid. The condition of the oil is suitable for further service.

view report



### 11 Jan 2021 Diag: Wes Davis

NORMAL



Resample at the next service interval to monitor. All component wear rates are normal. The system cleanliness is acceptable for your target ISO 4406 cleanliness code. The system and fluid cleanliness is acceptable. The AN level is acceptable for this fluid. The condition of the oil is suitable for further service.

view report



### 20 Jul 2020 Diag: Kevin Marson

NORMAL



Resample at the next service interval to monitor. All component wear rates are normal. The system cleanliness is acceptable for your target ISO 4406 cleanliness code. The system and fluid cleanliness is acceptable. The AN level is acceptable for this fluid. The condition of the oil is suitable for further service.

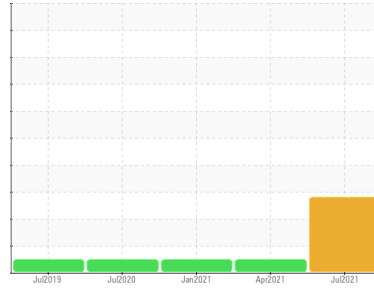
view report





# OIL ANALYSIS REPORT

## Sample Rating Trend



## VISUAL METAL



Machine Id  
**LW-G2-HPU**

Component  
**Hydraulic System**

Fluid  
**ESSO TERESSO ISO 46 (540 LTR)**

### DIAGNOSIS

#### Recommendation

We advise that you check for visible metal particles in the oil. We recommend you service the filters on this component. We recommend an early resample to monitor this condition.

#### Wear

Light concentration of visible metal present.

#### Contamination

There is a light amount of silt (particulates < 14 microns in size) present in the oil.

#### Fluid Condition

The AN level is acceptable for this fluid. The condition of the oil is suitable for further service.

### SAMPLE INFORMATION

	method	limit/base	current	history1	history2
Sample Number	Client Info		<b>WC0609848</b>	WC0481679	WC0481659
Sample Date	Client Info		<b>28 Jul 2021</b>	14 Apr 2021	11 Jan 2021
Machine Age	hrs	Client Info	<b>34066</b>	31968	30936
Oil Age	hrs	Client Info	<b>34066</b>	31968	30936
Oil Changed	Client Info		<b>Not Chngd</b>	Not Chngd	Filtered
Sample Status			<b>ABNORMAL</b>	NORMAL	NORMAL

### WEAR METALS

	method	limit/base	current	history1	history2
Iron	ppm	ASTM D5185(m) >20	<b>2</b>	<1	<1
Chromium	ppm	ASTM D5185(m) >20	<b>0</b>	0	0
Nickel	ppm	ASTM D5185(m) >20	<b>&lt;1</b>	1	<1
Titanium	ppm	ASTM D5185(m)	<b>0</b>	0	0
Silver	ppm	ASTM D5185(m)	<b>&lt;1</b>	<1	<1
Aluminum	ppm	ASTM D5185(m) >20	<b>&lt;1</b>	<1	<1
Lead	ppm	ASTM D5185(m) >20	<b>2</b>	2	2
Copper	ppm	ASTM D5185(m) >20	<b>1</b>	2	2
Tin	ppm	ASTM D5185(m) >20	<b>&lt;1</b>	<1	0
Antimony	ppm	ASTM D5185(m)	<b>0</b>	0	0
Vanadium	ppm	ASTM D5185(m)	<b>0</b>	0	0
Beryllium	ppm	ASTM D5185(m)	<b>0</b>	0	0
Cadmium	ppm	ASTM D5185(m)	<b>0</b>	0	0

### ADDITIVES

	method	limit/base	current	history1	history2
Boron	ppm	ASTM D5185(m) 0	<b>&lt;1</b>	<1	<1
Barium	ppm	ASTM D5185(m)	<b>0</b>	<1	<1
Molybdenum	ppm	ASTM D5185(m) 0	<b>0</b>	0	0
Manganese	ppm	ASTM D5185(m)	<b>0</b>	0	0
Magnesium	ppm	ASTM D5185(m) 0	<b>0</b>	0	<1
Calcium	ppm	ASTM D5185(m) 0	<b>4</b>	4	5
Phosphorus	ppm	ASTM D5185(m) 2.4	<b>32</b>	30	30
Zinc	ppm	ASTM D5185(m) 0	<b>12</b>	13	13
Sulfur	ppm	ASTM D5185(m)	<b>1959</b>	1991	1927
Lithium	ppm	ASTM D5185(m)	<b>&lt;1</b>	<1	<1

### CONTAMINANTS

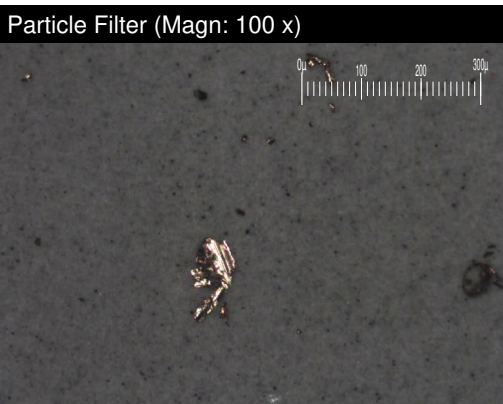
	method	limit/base	current	history1	history2
Silicon	ppm	ASTM D5185(m) >15	<b>1</b>	1	1
Sodium	ppm	ASTM D5185(m)	<b>&lt;1</b>	1	1
Potassium	ppm	ASTM D5185(m) >20	<b>&lt;1</b>	<1	<1

### FLUID CLEANLINESS

	method	limit/base	current	history1	history2
Particles >4µm	ASTM D7647	>5000	<b>▲ 5474</b>	3045	1595
Particles >6µm	ASTM D7647	>1300	<b>▲ 1973</b>	996	400
Particles >14µm	ASTM D7647	>160	<b>▲ 229</b>	91	36
Particles >21µm	ASTM D7647	>40	<b>▲ 60</b>	22	7
Particles >38µm	ASTM D7647	>10	<b>2</b>	1	0
Particles >71µm	ASTM D7647	>3	<b>0</b>	0	0
Oil Cleanliness	ISO 4406 (c)	>19/17/14	<b>▲ 20/18/15</b>	19/17/14	18/16/12

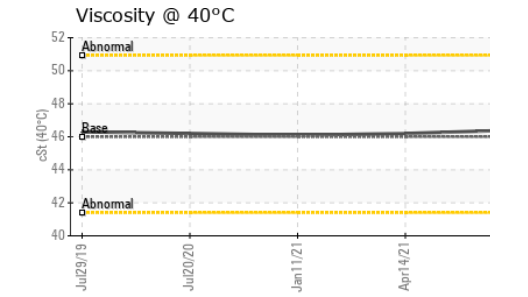
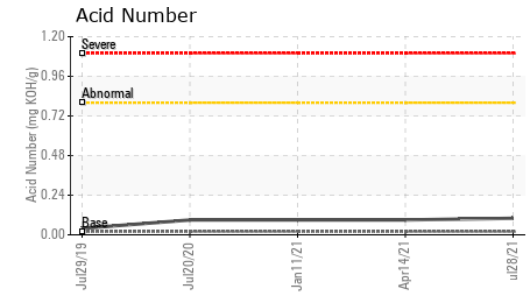
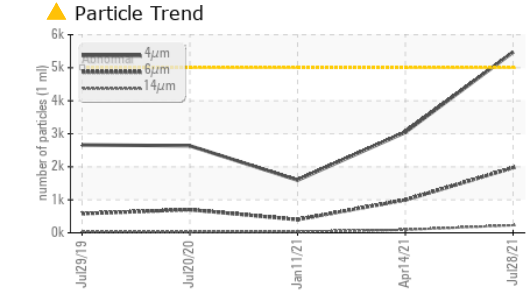
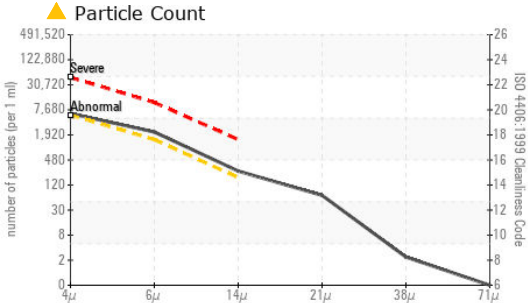
### FLUID DEGRADATION

	method	limit/base	current	history1	history2
Acid Number (AN)	mg KOH/g	ASTM D974* 0.02	<b>0.10</b>	0.09	0.09





# OIL ANALYSIS REPORT

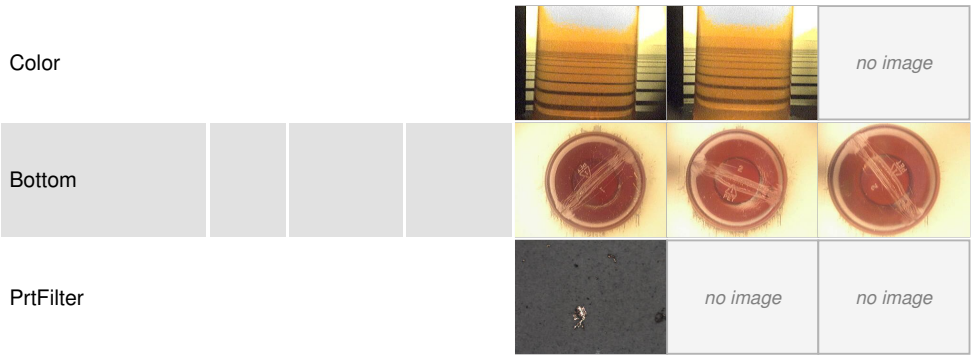


**Laboratory** : WearCheck - C8-1175 Appleby Line, Burlington, ON L7L 5H9 **Pic Mobert Hydro Inc. (Regional Power)**  
**Sample No.** : WC0609848 **Received** : 30 Jul 2021 c/o Spadoni's Home Hardware, 220 Winnipeg St.  
**Lab Number** : 02436330 **Diagnosed** : 30 Jul 2021 White River, ON  
**Unique Number** : 5263861 **Diagnostician** : Kevin Marson CA P0M 3G0  
**Test Package** : IND 2 ( Additional Tests: Bottom, BottomAnalysis, FilterPatch, TAN Man ) **Contact:** Hassan Mahmood  
 To discuss this sample report, contact Customer Service at 1-800-268-2131. hassan.mahmood@regionalpower.com  
 Test denoted (\*) outside scope of accreditation, (m) method modified, (e) tested at external lab. T:  
 Validity of results and interpretation are based on the sample and information as supplied. F:

VISUAL	method	limit/base	current	history1	history2
White Metal	scalar	Visual*	NONE	▲ LIGHT	NONE
Yellow Metal	scalar	Visual*	NONE	NONE	NONE
Precipitate	scalar	Visual*	NONE	NONE	NONE
Silt	scalar	Visual*	NONE	NONE	NONE
Debris	scalar	Visual*	NONE	NONE	NONE
Sand/Dirt	scalar	Visual*	NONE	NONE	NONE
Appearance	scalar	Visual*	NORML	NORML	NORML
Odor	scalar	Visual*	NORML	NORML	NORML
Emulsified Water	scalar	Visual*	>0.05	NEG	NEG
Free Water	scalar	Visual*		NEG	NEG

FLUID PROPERTIES	method	limit/base	current	history1	history2
Visc @ 40°C	cSt	ASTM D7279(m)	46	46.2	46.1

SAMPLE IMAGES	method	limit/base	current	history1	history2
---------------	--------	------------	---------	----------	----------



## GRAPHS

