



PROBLEM SUMMARY

Sample Rating Trend

ISO



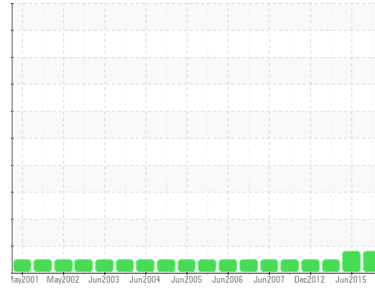
Machine Id
HCT G1 LGBR

Component

Bearing

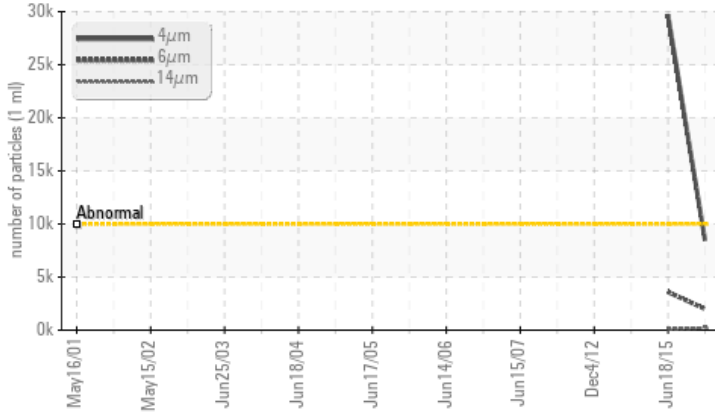
Fluid

ESSO TERESSO ISO 68 (95 LTR)



COMPONENT CONDITION SUMMARY

▲ Particle Trend



RECOMMENDATION

We recommend you service the filters on this component. Resample at the next service interval to monitor.

PROBLEMATIC TEST RESULTS

| Sample Status | | | ATTENTION | ABNORMAL | NORMAL |
|-----------------|--------------|-----------|------------|------------|--------|
| Particles >14µm | ASTM D7647 | >160 | ▲ 220 | 82 | --- |
| Particles >21µm | ASTM D7647 | >40 | ▲ 77 | 11 | --- |
| Oil Cleanliness | ISO 4406 (c) | >20/18/14 | ▲ 20/18/15 | ▲ 22/19/14 | --- |

Customer Id: NEWSTJ
Sample No.: WC0445176
Lab Number: 02473266
Test Package: IND 2



To manage this report scan the QR code

To discuss the diagnosis or test data:
Kevin Marson +1 (289)291-4644 x4644
Kevin.Marson@wearcheck.com

To change component or sample information:
Gloria Gonzalez +1 (289)291-4643 x4643
gloria.gonzalez@wearcheck.com

RECOMMENDED ACTIONS

| Action | Status | Date | Done By | Description |
|---------------|--------|------|---------|---|
| Change Filter | --- | --- | ? | We recommend you service the filters on this component. |

HISTORICAL DIAGNOSIS

18 Jun 2015 Diag: Wes Davis

ISO



We recommend you service the filters on this component. We recommend an early resample to monitor this condition. All component wear rates are normal. Particles >4µm are abnormally high. Particles >6µm are notably high. The AN level is acceptable for this fluid. The condition of the oil is suitable for further service.

view report



17 Dec 2013 Diag: Wes Davis

NORMAL



Resample at the next service interval to monitor. All component wear rates are normal. There is no indication of any contamination in the component. The AN level is acceptable for this fluid. The condition of the oil is suitable for further service.

view report



04 Dec 2012 Diag: Wes Davis

NORMAL



Resample at the next service interval to monitor. All component wear rates are normal. There is no indication of any contamination in the component. The TAN level is acceptable for this fluid. The condition of the oil is suitable for further service.

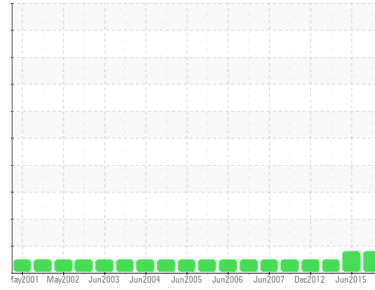
view report





OIL ANALYSIS REPORT

Sample Rating Trend



ISO



Machine Id
HCT G1 LGBR
 Component
Bearing
 Fluid
ESSO TERESSO ISO 68 (95 LTR)

DIAGNOSIS

Recommendation

We recommend you service the filters on this component. Resample at the next service interval to monitor.

Wear

All component wear rates are normal.

Contamination

There is a light amount of silt (particulates < 14 microns in size) present in the oil.

Fluid Condition

The AN level is acceptable for this fluid. The condition of the oil is suitable for further service.

SAMPLE INFORMATION

| | method | limit/base | current | history1 | history2 |
|---------------|-------------|-------------|--------------------|-------------|-------------|
| Sample Number | Client Info | | WC0445176 | WC925447 | WC838266 |
| Sample Date | Client Info | | 20 Jan 2022 | 18 Jun 2015 | 17 Dec 2013 |
| Machine Age | days | Client Info | 0 | 0 | 0 |
| Oil Age | days | Client Info | 0 | 0 | 0 |
| Oil Changed | Client Info | | N/A | N/A | N/A |
| Sample Status | | | ATTENTION | ABNORMAL | NORMAL |

CONTAMINATION

| | method | limit/base | current | history1 | history2 |
|-------|-----------|------------|------------|----------|----------|
| Water | WC Method | >2 | NEG | NEG | NEG |

WEAR METALS

| | method | limit/base | current | history1 | history2 |
|-----------|-------------|--------------------|--------------|----------|----------|
| PQ | ASTM D8184* | | 0 | 21 | 5 |
| Iron | ppm | ASTM D5185(m) >63 | <1 | <1 | <1 |
| Chromium | ppm | ASTM D5185(m) | 0 | 0 | 0 |
| Nickel | ppm | ASTM D5185(m) | <1 | 0 | 0 |
| Titanium | ppm | ASTM D5185(m) | 0 | <1 | 0 |
| Silver | ppm | ASTM D5185(m) | 0 | 0 | 0 |
| Aluminum | ppm | ASTM D5185(m) >2 | <1 | <1 | <1 |
| Lead | ppm | ASTM D5185(m) >161 | <1 | <1 | <1 |
| Copper | ppm | ASTM D5185(m) >13 | 4 | <1 | <1 |
| Tin | ppm | ASTM D5185(m) >27 | <1 | 1 | 0 |
| Antimony | ppm | ASTM D5185(m) | <1 | 0 | 0 |
| Vanadium | ppm | ASTM D5185(m) | 0 | 0 | 0 |
| Beryllium | ppm | ASTM D5185(m) | 0 | 0 | 0 |
| Cadmium | ppm | ASTM D5185(m) | 0 | <1 | 0 |

ADDITIVES

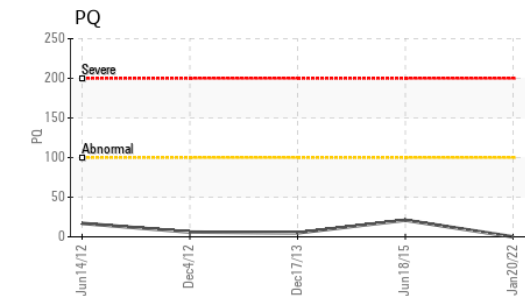
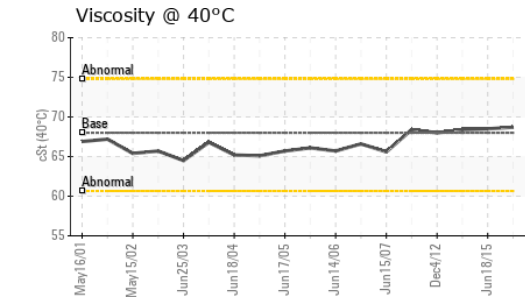
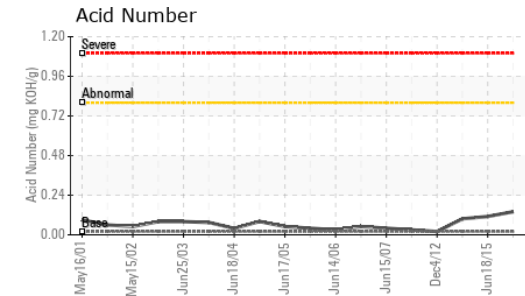
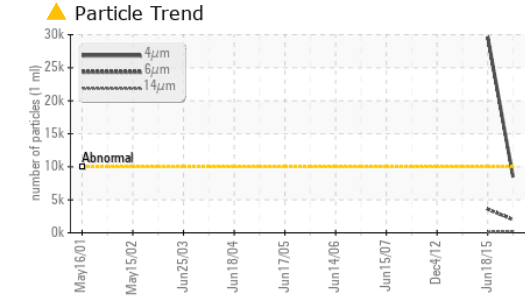
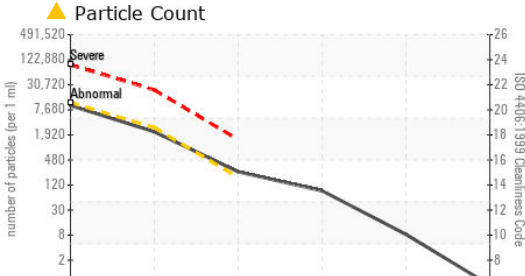
| | method | limit/base | current | history1 | history2 |
|------------|--------|--------------------|--------------|----------|----------|
| Boron | ppm | ASTM D5185(m) 4.5 | <1 | 0 | <1 |
| Barium | ppm | ASTM D5185(m) 0.4 | 0 | <1 | <1 |
| Molybdenum | ppm | ASTM D5185(m) 0 | 0 | 0 | 0 |
| Manganese | ppm | ASTM D5185(m) | 0 | <1 | <1 |
| Magnesium | ppm | ASTM D5185(m) 0 | 0 | 0 | 0 |
| Calcium | ppm | ASTM D5185(m) 0 | 0 | 2 | <1 |
| Phosphorus | ppm | ASTM D5185(m) 0.7 | 3 | 4 | 3 |
| Zinc | ppm | ASTM D5185(m) 0 | 14 | 3 | 2 |
| Sulfur | ppm | ASTM D5185(m) 1315 | 1782 | 1984 | 1883 |
| Lithium | ppm | ASTM D5185(m) | <1 | <1 | <1 |

CONTAMINANTS

| | method | limit/base | current | history1 | history2 |
|-----------|--------|-------------------|--------------|----------|----------|
| Silicon | ppm | ASTM D5185(m) >12 | 4 | 2 | 2 |
| Sodium | ppm | ASTM D5185(m) | 0 | 3 | <1 |
| Potassium | ppm | ASTM D5185(m) >20 | <1 | 0 | 0 |



OIL ANALYSIS REPORT



Laboratory : WearCheck - C8-1175 Appleby Line, Burlington, ON L7L 5H9
Sample No. : WC0445176 **Received** : 22 Feb 2022
Lab Number : 02473266 **Diagnosed** : 23 Feb 2022
Unique Number : 5358189 **Diagnostician** : Kevin Marson
Test Package : IND 2 (Additional Tests: PrtCount, TAN Man)

To discuss this sample report, contact Customer Service at 1-800-268-2131.
 Test denoted (*) outside scope of accreditation, (m) method modified, (e) tested at external lab.
 Validity of results and interpretation are based on the sample and information as supplied.

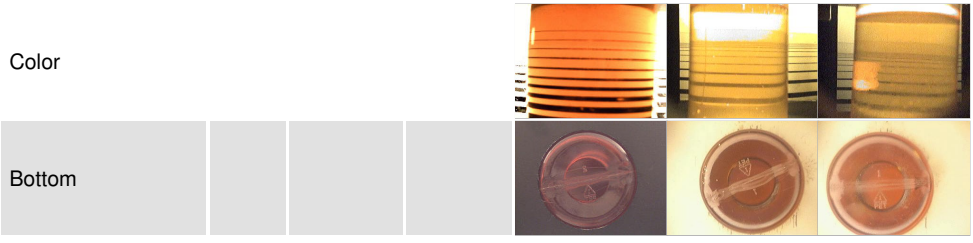
| FLUID CLEANLINESS | method | limit/base | current | history1 | history2 |
|-------------------|--------------|------------|-------------------|------------|----------|
| Particles >4µm | ASTM D7647 | >10000 | 8476 | ▲ 29661 | --- |
| Particles >6µm | ASTM D7647 | >2500 | 1997 | ▲ 3588 | --- |
| Particles >14µm | ASTM D7647 | >160 | ▲ 220 | 82 | --- |
| Particles >21µm | ASTM D7647 | >40 | ▲ 77 | 11 | --- |
| Particles >38µm | ASTM D7647 | >10 | 7 | 0 | --- |
| Particles >71µm | ASTM D7647 | >3 | 0 | 0 | --- |
| Oil Cleanliness | ISO 4406 (c) | >20/18/14 | ▲ 20/18/15 | ▲ 22/19/14 | --- |

| FLUID DEGRADATION | method | limit/base | current | history1 | history2 |
|-------------------|---------------------|------------|-------------|----------|----------|
| Acid Number (AN) | mg KOH/g ASTM D974* | 0.02 | 0.14 | 0.111 | 0.097 |

| VISUAL | method | limit/base | current | history1 | history2 |
|------------------|----------------|------------|--------------|----------|----------|
| White Metal | scalar Visual* | NONE | NONE | NONE | VLITE |
| Yellow Metal | scalar Visual* | NONE | NONE | NONE | NONE |
| Precipitate | scalar Visual* | NONE | NONE | NONE | NONE |
| Silt | scalar Visual* | NONE | NONE | NONE | NONE |
| Debris | scalar Visual* | NONE | NONE | VLITE | NONE |
| Sand/Dirt | scalar Visual* | NONE | NONE | NONE | NONE |
| Appearance | scalar Visual* | NORML | NORML | NORML | NORML |
| Odor | scalar Visual* | NORML | NORML | NORML | NORML |
| Emulsified Water | scalar Visual* | >2 | NEG | NEG | NEG |
| Free Water | scalar Visual* | | NEG | NEG | NEG |

| FLUID PROPERTIES | method | limit/base | current | history1 | history2 |
|------------------|-------------------|------------|-------------|----------|----------|
| Visc @ 40°C | cSt ASTM D7279(m) | 68 | 68.7 | 68.5 | 68.4 |

| SAMPLE IMAGES | method | limit/base | current | history1 | history2 |
|---------------|--------|------------|---------|----------|----------|
|---------------|--------|------------|---------|----------|----------|



NEWFOUNDLAND POWER INC.
 50 DUFFY PLACE, PO BOX 8910
 ST. JOHNS, NL
 CA A1B 3P6
 Contact: Shane Reid
 sreid@newfoundlandpower.com
 T: (709)737-5209
 F: (709)737-2926