



FUEL REPORT

Sample Rating Trend

ISO



Area

GARMISON ON MONTREAL [VQ5923]

Machine Id

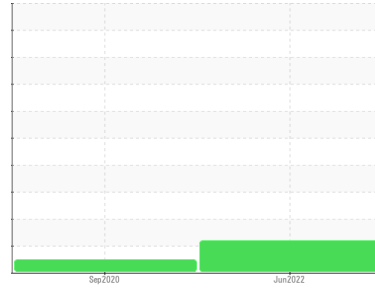
CUMMINS GD12151

Component

Diesel Fuel

Fluid

No.2 DIESEL FUEL (ULTRALOW SULPHUR) (--- GAL)



DIAGNOSIS

Recommendation

Les tests de laboratoire indiquent que ce carburant peut être utilisé et qu'il répond à toutes les exigences. Nous vous recommandons de filtrer ce fluide avant de l'utiliser. Nous recommandons le remplacement des filtres de ce composant. Nous vous recommandons d'échantillonner de nouveau dès que possible afin de contrôler la situation.

Contaminants

Il y a une quantité modérée de particules (de 4 à 14 microns) dans le carburant. La teneur en eau est négligeable.

Fuel Condition

Tous les essais en laboratoire indiquent que cet échantillon satisfait aux spécifications pour le carburant diesel à ultra-faible teneur de soufre No.2 (US EPA/CGSB-3.517-3 type B). le carburant peut encore servir si la contamination peut être réduite à un niveau acceptable.

SAMPLE INFORMATION

method	limit/base	current	history1	history2
Sample Number	Client Info	GD0005730	GD0004428	---
Sample Date	Client Info	17 Jun 2022	25 Sep 2020	---
Machine Age	hrs	0	1303	---
Sample Status		ABNORMAL	NORMAL	---

PHYSICAL PROPERTIES

method	limit/base	current	history1	history2		
Specific Gravity	ASTM D1298*	0.839	0.822	0.828	---	
Fuel Color	text	Visual Screen*	Yellow	Pink	Pink	---
Visc @ 40°C	cSt	ASTM D7279(m)	3.0	2	2.1	---
Pensky-Martens Flash Point	°C	ASTM D7215*	52	50	51.6	---

SULFUR CONTENT

method	limit/base	current	history1	history2		
Sulfur	ppm	ASTM D5185(m)	10	14	15	---

DISTILLATION

method	limit/base	current	history1	history2		
Initial Boiling Point	°C	ASTM D2887*	165	149	156	---
5% Distillation Point	°C	ASTM D2887*		161	174	---
10% Distill Point	°C	ASTM D2887*	201	172	185	---
15% Distillation Point	°C	ASTM D2887*		180	191	---
20% Distill Point	°C	ASTM D2887*	216	187	201	---
30% Distill Point	°C	ASTM D2887*	230	204	217	---
40% Distill Point	°C	ASTM D2887*	243	220	232	---
50% Distill Point	°C	ASTM D2887*	255	236	248	---
60% Distill Point	°C	ASTM D2887*	267	253	264	---
70% Distill Point	°C	ASTM D2887*	280	268	280	---
80% Distill Point	°C	ASTM D2887*	295	282	299	---
85% Distillation Point	°C	ASTM D2887*		292	309	---
90% Distill Point	°C	ASTM D2887*	310	305	322	---
95% Distillation Point	°C	ASTM D2887*		327	340	---
Final Boiling Point	°C	ASTM D2887*	341	345	353	---

IGNITION QUALITY

method	limit/base	current	history1	history2	
API Gravity	ASTM D1298*	37.7	40	39	---
Cetane Index	ASTM D4737*	<40.0	48	49	---

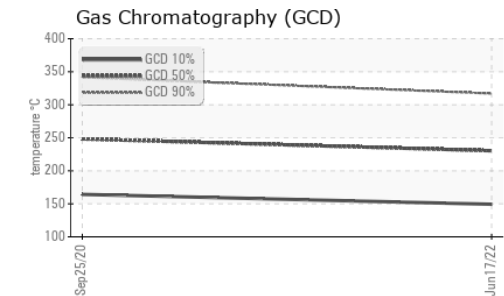
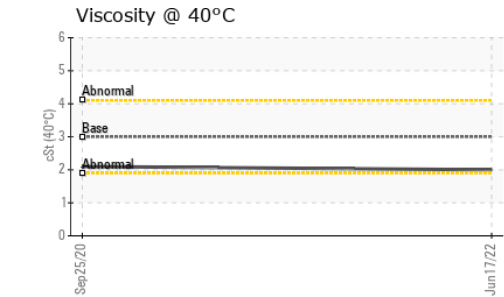
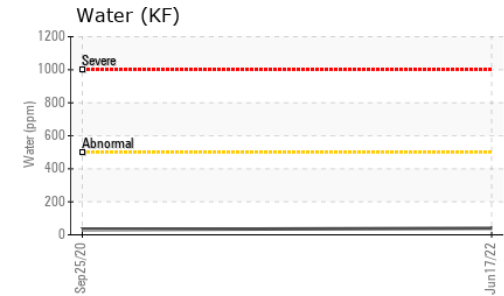
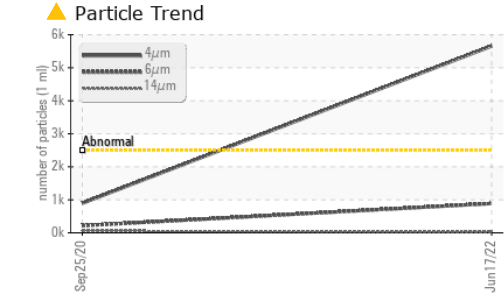
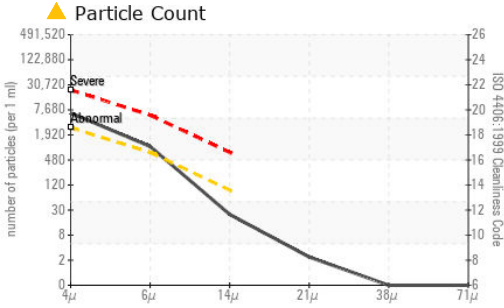
CONTAMINANTS

method	limit/base	current	history1	history2		
Silicon	ppm	ASTM D5185(m)	<1.0	0	0	---
Sodium	ppm	ASTM D5185(m)	<0.1	<1	<1	---
Potassium	ppm	ASTM D5185(m)	<0.1	0	<1	---
Water	%	ASTM D6304*	<0.05	0.004	0.003	---
ppm Water	ppm	ASTM D6304*	<500	40.0	31.7	---

FLUID CLEANLINESS

method	limit/base	current	history1	history2	
Particles >4µm	ASTM D7647	>2500	▲ 5657	895	---
Particles >6µm	ASTM D7647	>640	● 888	216	---
Particles >14µm	ASTM D7647	>80	21	59	---
Particles >21µm	ASTM D7647	>20	2	26	---
Particles >38µm	ASTM D7647	>4	0	3	---
Particles >71µm	ASTM D7647	>3	0	0	---
Oil Cleanliness	ISO 4406 (c)	>18/16/13	▲ 20/17/12	17/15/13	---

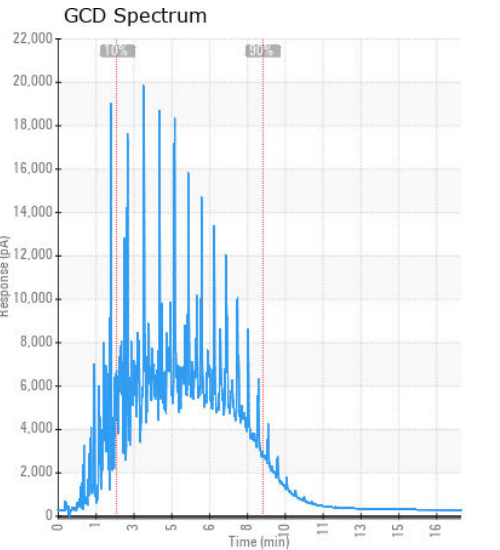
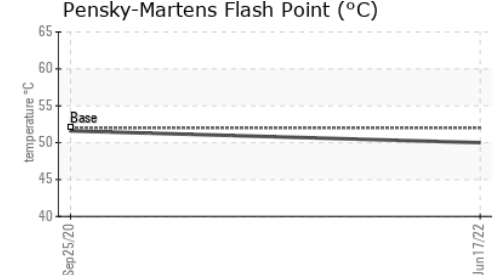
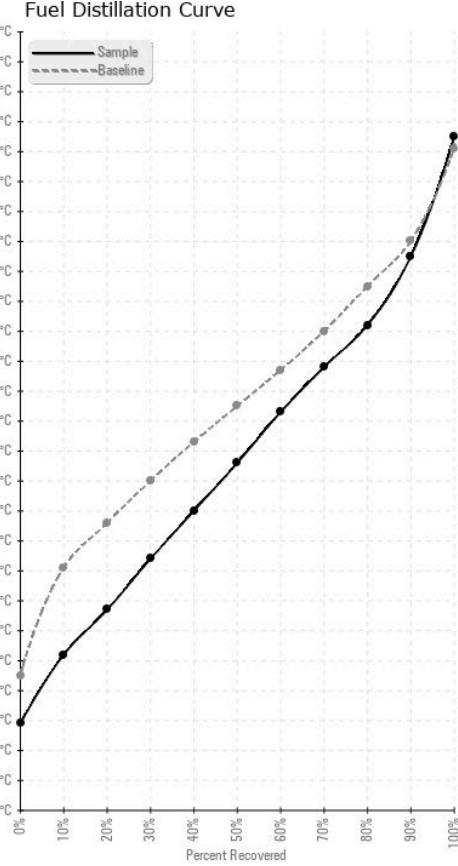
FUEL REPORT



HEAVY METALS	method	limit/base	current	history1	history2
Aluminum	ppm	ASTM D5185(m)	<0.1	0	---
Nickel	ppm	ASTM D5185(m)	<0.1	0	---
Lead	ppm	ASTM D5185(m)	<1	0	---
Vanadium	ppm	ASTM D5185(m)	<0.1	0	---
Iron	ppm	ASTM D5185(m)	<0.1	<1	---
Calcium	ppm	ASTM D5185(m)	<0.1	<1	---
Magnesium	ppm	ASTM D5185(m)	<0.1	<1	---
Phosphorus	ppm	ASTM D5185(m)	<0.1	0	---
Zinc	ppm	ASTM D5185(m)	<0.1	<1	---

SAMPLE IMAGES	method	limit/base	current	history1	history2
Color					no image
Bottom					no image

GRAPHS



Laboratory : WearCheck - C8-1175 Appleby Line, Burlington, ON L7L 5H9
Sample No. : GD0005730
Lab Number : 02496196
Unique Number : 5421156
Test Package : FUEL (Additional Tests: CC Flash, GC-PercFuel, PrtCount)

Generatrice Drummond
 243 rue des ARTISANS
 SAINT-GERMAIN-DE-GRANTHAM, QC
 CA J0C 1K0
 Contact: Valerie Poirier
 poiirivalerie@generatricedrummond.com
 T: (819)398-6811
 F: (819)398-7022

To discuss this sample report, contact Customer Service at 1-800-268-2131.
 Test denoted (*) outside scope of accreditation, (m) method modified, (e) tested at external lab.
 Validity of results and interpretation are based on the sample and information as supplied.