



FUEL REPORT

Sample Rating Trend

ISO



Area

GARNISON OF MONTREAL [VQ5937]

Machine Id

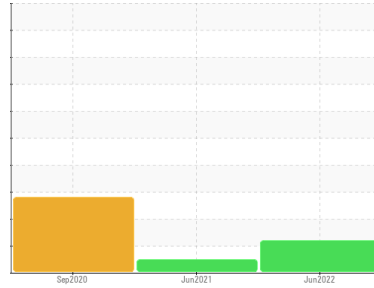
GD12156

Component

Diesel Fuel

Fluid

No.2 DIESEL FUEL (ULTRALOW SULPHUR) (--- LTR)



DIAGNOSIS

Recommendation

Les tests de laboratoire indiquent que ce carburant peut être utilisé et qu'il répond à toutes les exigences. Nous vous recommandons de filtrer ce fluide avant de l'utiliser. Nous recommandons le remplacement des filtres de ce composant. Nous vous recommandons d'échantillonner de nouveau dès que possible afin de contrôler la situation.

Contaminants

Il y a une quantité modérée de particules (de 4 à 14 microns) dans le carburant. La teneur en eau est négligeable.

Fuel Condition

Tous les essais en laboratoire indiquent que cet échantillon satisfait aux spécifications pour le carburant diesel à ultra-faible teneur de soufre No.2 (US EPA/CGSB-3.517-3 type B). le carburant peut encore servir si la contamination peut être réduite à un niveau acceptable.

SAMPLE INFORMATION

method	limit/base	current	history1	history2
Sample Number	Client Info	GD0005715	GD0004918	GD0004430
Sample Date	Client Info	20 Jun 2022	21 Jun 2021	26 Sep 2020
Machine Age	hrs	0	0	675
Sample Status		ABNORMAL	NORMAL	ABNORMAL

PHYSICAL PROPERTIES

method	limit/base	current	history1	history2		
Specific Gravity	ASTM D1298*	0.839	0.822	0.827	0.828	
Fuel Color	text	Visual Screen*	Yellow	Pink	Pink	Pink
Visc @ 40°C	cSt	ASTM D7279(m)	3.0	1.9	2.0	2.3
Pensky-Martens Flash Point	°C	ASTM D7215*	52	48	50.1	52.7

SULFUR CONTENT

method	limit/base	current	history1	history2		
Sulfur	ppm	ASTM D5185(m)	10	13	10	13

DISTILLATION

method	limit/base	current	history1	history2		
Initial Boiling Point	°C	ASTM D2887*	165	154	155	157
5% Distillation Point	°C	ASTM D2887*		170	171	174
10% Distill Point	°C	ASTM D2887*	201	178	183	185
15% Distillation Point	°C	ASTM D2887*		184	190	192
20% Distill Point	°C	ASTM D2887*	216	190	199	202
30% Distill Point	°C	ASTM D2887*	230	207	215	218
40% Distill Point	°C	ASTM D2887*	243	223	230	233
50% Distill Point	°C	ASTM D2887*	255	238	246	249
60% Distill Point	°C	ASTM D2887*	267	255	262	264
70% Distill Point	°C	ASTM D2887*	280	269	278	280
80% Distill Point	°C	ASTM D2887*	295	286	297	299
85% Distillation Point	°C	ASTM D2887*		296	307	310
90% Distill Point	°C	ASTM D2887*	310	310	320	323
95% Distillation Point	°C	ASTM D2887*		332	338	342
Final Boiling Point	°C	ASTM D2887*	341	350	353	366

IGNITION QUALITY

method	limit/base	current	history1	history2	
API Gravity	ASTM D1298*	37.7	40	39	39
Cetane Index	ASTM D4737*	<40.0	49	49	49

CONTAMINANTS

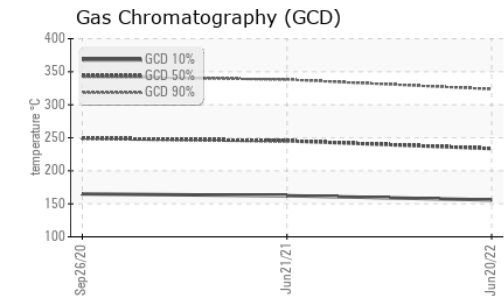
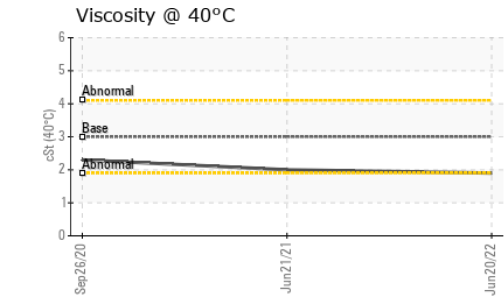
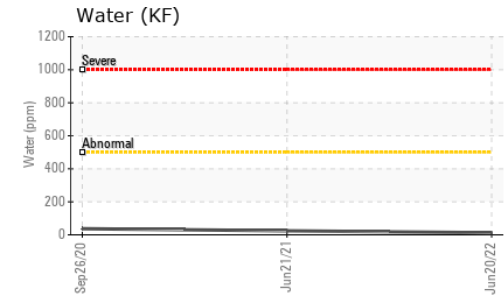
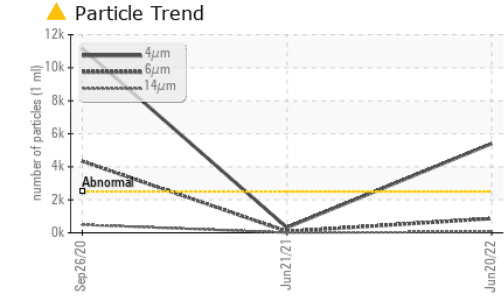
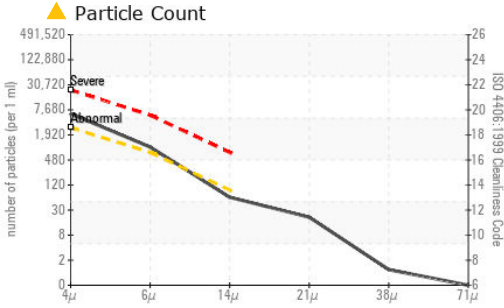
method	limit/base	current	history1	history2		
Silicon	ppm	ASTM D5185(m)	<1.0	0	0	0
Sodium	ppm	ASTM D5185(m)	<0.1	0	<1	<1
Potassium	ppm	ASTM D5185(m)	<0.1	0	0	<1
Water	%	ASTM D6304*	<0.05	0.001	0.002	0.003
ppm Water	ppm	ASTM D6304*	<500	12.2	24.4	37.2

FLUID CLEANLINESS

method	limit/base	current	history1	history2	
Particles >4µm	ASTM D7647	>2500	▲ 5404	315	▲ 11160
Particles >6µm	ASTM D7647	>640	● 862	81	▲ 4337
Particles >14µm	ASTM D7647	>80	54	9	▲ 490
Particles >21µm	ASTM D7647	>20	18	3	▲ 154
Particles >38µm	ASTM D7647	>4	1	0	▲ 13
Particles >71µm	ASTM D7647	>3	0	0	0
Oil Cleanliness	ISO 4406 (c)	>18/16/13	▲ 20/17/13	15/14/10	▲ 21/19/16



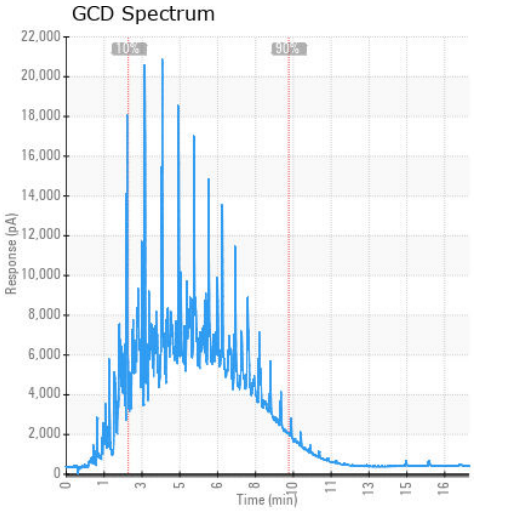
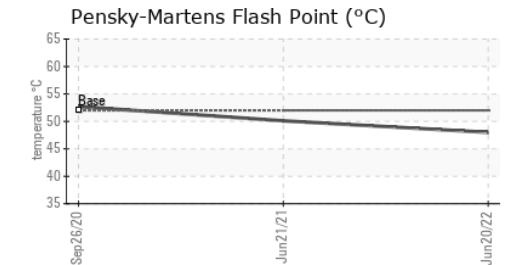
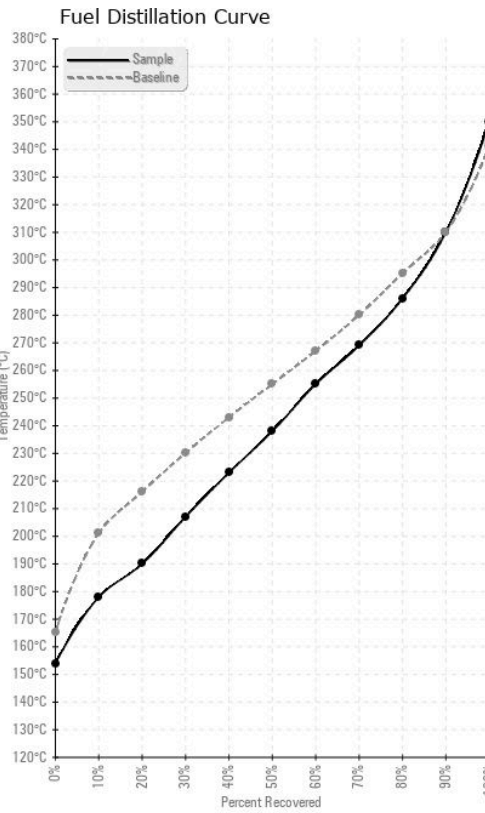
FUEL REPORT



HEAVY METALS	method	limit/base	current	history1	history2
Aluminum	ppm	ASTM D5185(m)	<0.1	0	0
Nickel	ppm	ASTM D5185(m)	<0.1	0	0
Lead	ppm	ASTM D5185(m)	<0.1	0	▲ 4
Vanadium	ppm	ASTM D5185(m)	<0.1	0	0
Iron	ppm	ASTM D5185(m)	<0.1	<1	<1
Calcium	ppm	ASTM D5185(m)	<0.1	0	0
Magnesium	ppm	ASTM D5185(m)	<0.1	<1	<1
Phosphorus	ppm	ASTM D5185(m)	<0.1	<1	0
Zinc	ppm	ASTM D5185(m)	<0.1	0	0

SAMPLE IMAGES	method	limit/base	current	history1	history2
Color					
Bottom					

GRAPHS



Laboratory : WearCheck - C8-1175 Appleby Line, Burlington, ON L7L 5H9
Sample No. : GD0005715
Lab Number : 02500894
Unique Number : 5433855
Test Package : FUEL (Additional Tests: CC Flash, GC-PercFuel, PrtCount)

Generatrice Drummond
 243 rue des ARTISANS
 SAINT-GERMAIN-DE-GRANTHAM, QC
 CA J0C 1K0
 Contact: Valerie Poirier
 poiirivalerie@generatricedrummond.com
 T: (819)398-6811
 F: (819)398-7022

To discuss this sample report, contact Customer Service at 1-800-268-2131.
 Test denoted (*) outside scope of accreditation, (m) method modified, (e) tested at external lab.
 Validity of results and interpretation are based on the sample and information as supplied.