



FUEL REPORT

Sample Rating Trend

NORMAL



Area

GARNISON OF MONTREAL [VQ5961]

Machine Id

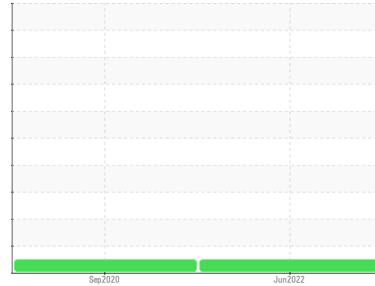
GD5067

Component

Diesel Fuel

Fluid

No.2 DIESEL FUEL (LOW-SULPHUR) (--- GAL)



DIAGNOSIS

Recommendation

Les tests de laboratoire indiquent que ce carburant peut être utilisé et qu'il répond à toutes les exigences. Échantillonner de nouveau l'équipement au prochain intervalle de vidange afin d'en surveiller la condition.

Contaminants

La propreté du système est acceptable pour votre objectif de propreté ISO 4406. La teneur en eau est négligeable. Il n'y a aucun indice de contamination dans le carburant diesel.

Fuel Condition

Tous les tests en laboratoire indiquent que cet échantillon répond aux spécifications du diesel n° 2 à basse teneur en soufre (US EPA/CGSB-3.7-3 type B).

SAMPLE INFORMATION

method	limit/base	current	history1	history2
Sample Number	Client Info	GD0005716	GD0004542	---
Sample Date	Client Info	23 Jun 2022	24 Sep 2020	---
Machine Age	hrs Client Info	0	525	---
Sample Status		NORMAL	NORMAL	---

PHYSICAL PROPERTIES

method	limit/base	current	history1	history2	
Specific Gravity	ASTM D1298*	0.839	0.821	0.823	---
Fuel Color	text Visual Screen*	Yellow	Pink	Pink	---
Visc @ 40°C	cSt ASTM D7279(m)	3.0	1.9	2.0	---
Pensky-Martens Flash Point	°C ASTM D7215*	52	49	56	---

SULFUR CONTENT

method	limit/base	current	history1	history2	
Sulfur	ppm ASTM D5185(m)	250	62	132	---

DISTILLATION

method	limit/base	current	history1	history2	
Initial Boiling Point	°C ASTM D2887*	165	155	160	---
5% Distillation Point	°C ASTM D2887*		170	178	---
10% Distill Point	°C ASTM D2887*	201	178	187	---
15% Distillation Point	°C ASTM D2887*		185	194	---
20% Distill Point	°C ASTM D2887*	216	191	202	---
30% Distill Point	°C ASTM D2887*	230	208	217	---
40% Distill Point	°C ASTM D2887*	243	223	231	---
50% Distill Point	°C ASTM D2887*	255	239	245	---
60% Distill Point	°C ASTM D2887*	267	255	259	---
70% Distill Point	°C ASTM D2887*	280	269	274	---
80% Distill Point	°C ASTM D2887*	295	286	291	---
85% Distillation Point	°C ASTM D2887*		297	302	---
90% Distill Point	°C ASTM D2887*	310	310	314	---
95% Distillation Point	°C ASTM D2887*		331	337	---
Final Boiling Point	°C ASTM D2887*	341	350	365	---

IGNITION QUALITY

method	limit/base	current	history1	history2	
API Gravity	ASTM D1298*	37.7	40	40	---
Cetane Index	ASTM D4737*	<40.0	50	51	---

CONTAMINANTS

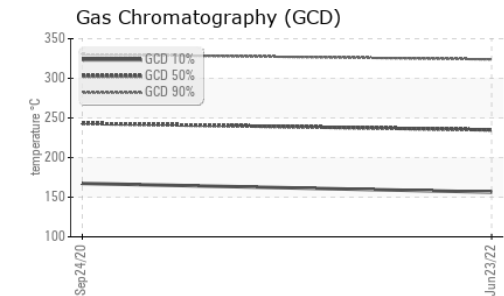
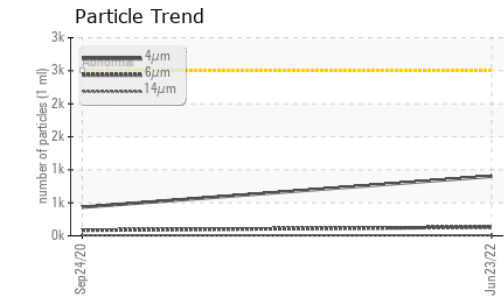
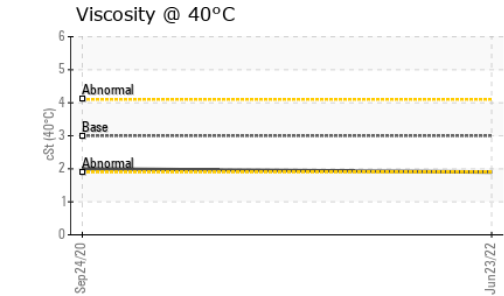
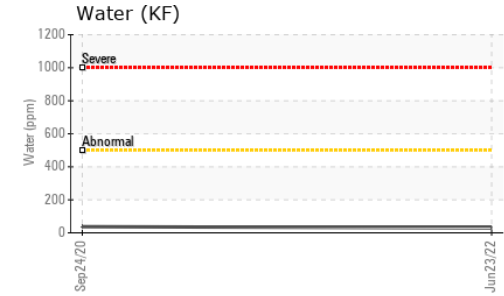
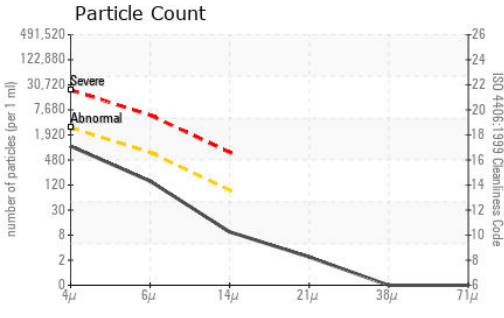
method	limit/base	current	history1	history2	
Silicon	ppm ASTM D5185(m)	<1.0	0	0	---
Sodium	ppm ASTM D5185(m)	<0.1	<1	<1	---
Potassium	ppm ASTM D5185(m)	<0.1	0	0	---
Water	% ASTM D6304*	<0.05	0.003	0.003	---
ppm Water	ppm ASTM D6304*	<500	29.6	37.4	---

FLUID CLEANLINESS

method	limit/base	current	history1	history2	
Particles >4µm	ASTM D7647	>2500	901	434	---
Particles >6µm	ASTM D7647	>640	131	84	---
Particles >14µm	ASTM D7647	>80	8	7	---
Particles >21µm	ASTM D7647	>20	2	3	---
Particles >38µm	ASTM D7647	>4	0	0	---
Particles >71µm	ASTM D7647	>3	0	0	---
Oil Cleanliness	ISO 4406 (c)	>18/16/13	17/14/10	16/14/10	---



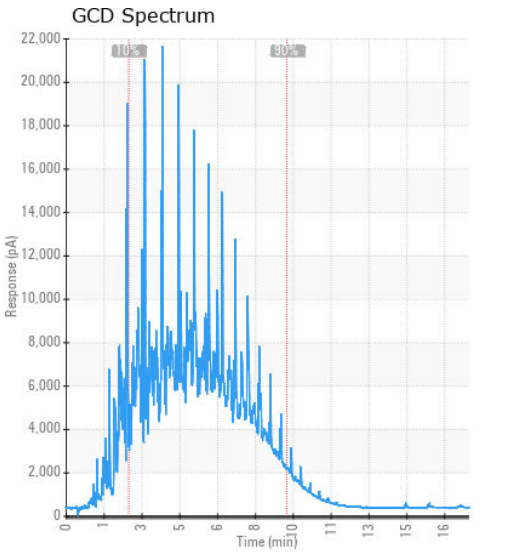
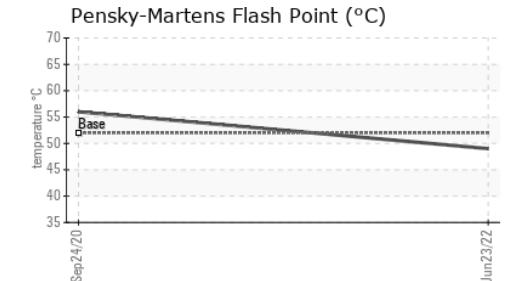
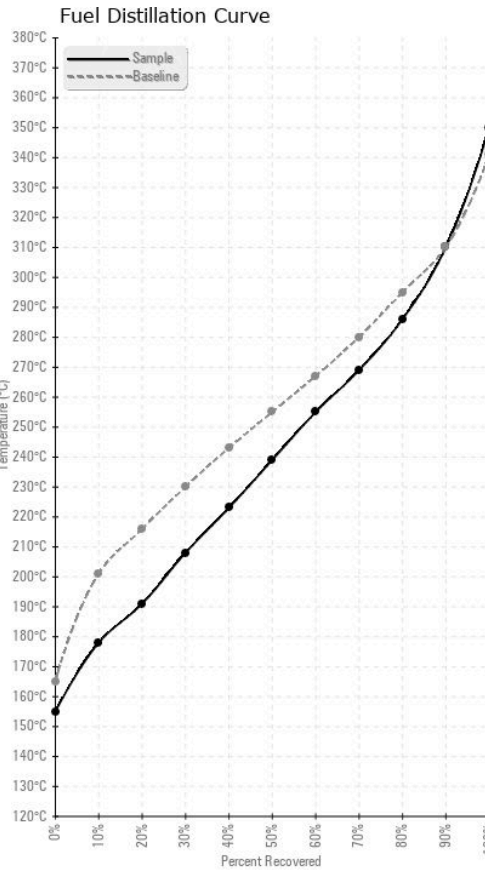
FUEL REPORT



HEAVY METALS	method	limit/base	current	history1	history2
Aluminum	ppm	ASTM D5185(m)	<0.1	0	---
Nickel	ppm	ASTM D5185(m)	<0.1	0	---
Lead	ppm	ASTM D5185(m)	<0.1	<1	---
Vanadium	ppm	ASTM D5185(m)	<0.1	0	---
Iron	ppm	ASTM D5185(m)	<0.1	<1	---
Calcium	ppm	ASTM D5185(m)	<0.1	0	---
Magnesium	ppm	ASTM D5185(m)	<0.1	<1	---
Phosphorus	ppm	ASTM D5185(m)	<0.1	0	---
Zinc	ppm	ASTM D5185(m)	<0.1	<1	---

SAMPLE IMAGES	method	limit/base	current	history1	history2
Color					no image
Bottom					no image

GRAPHS



Laboratory : WearCheck - C8-1175 Appleby Line, Burlington, ON L7L 5H9
Sample No. : GD0005716 **Received** : 20 Jul 2022
Lab Number : 02500895 **Tested** : 25 Jul 2022
Unique Number : 5433856 **Diagnosed** : 25 Jul 2022 - Kevin Marson
Test Package : FUEL (Additional Tests: CC Flash, GC-PercFuel, PrtCount)

Generatrice Drummond
 243 rue des ARTISANS
 SAINT-GERMAIN-DE-GRANTHAM, QC
 CA J0C 1K0
 Contact: Valerie Poirier
 poiirivalerie@generatricedrummond.com
 T: (819)398-6811
 F: (819)398-7022

To discuss this sample report, contact Customer Service at 1-800-268-2131.
 Test denoted (*) outside scope of accreditation, (m) method modified, (e) tested at external lab.
 Validity of results and interpretation are based on the sample and information as supplied.