



FUEL REPORT

Sample Rating Trend

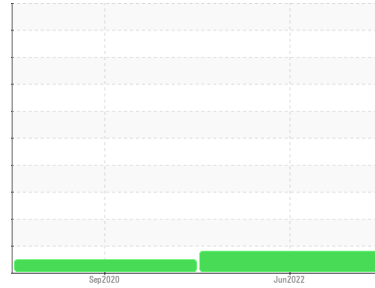
ISO



Area
[VQ5991]
Machine Id
GD12239

Component
Diesel Fuel
Fluid

No.2 DIESEL FUEL (ULTRALOW SULPHUR) (--- GAL)



DIAGNOSIS

Recommendation

Les tests de laboratoire indiquent que ce carburant peut être utilisé et qu'il répond à toutes les exigences. Nous vous recommandons de filtrer ce fluide avant de l'utiliser. Nous recommandons le remplacement des filtres de ce composant. Échantillonner de nouveau l'équipement au prochain intervalle de vidange afin d'en surveiller la condition.

Contaminants

Il y a une légère quantité de limon (particules de 4 à 14 microns) dans le carburant. La teneur en eau est négligeable.

Fuel Condition

le carburant ne peut plus être utilisée en raison de la présence de contaminants. Tous les essais en laboratoire indiquent que cet échantillon satisfait aux spécifications pour le carburant diesel à ultra-faible teneur de soufre No.2 (US EPA/CGSB-3.517-3 type B).

SAMPLE INFORMATION		method	limit/base	current	history1	history2
Sample Number	Client Info			GD0005733	GD0004433	---
Sample Date	Client Info			21 Jun 2022	28 Sep 2020	---
Machine Age	hrs	Client Info		0	74	---
Sample Status				ATTENTION	NORMAL	---

PHYSICAL PROPERTIES		method	limit/base	current	history1	history2
Specific Gravity		ASTM D1298*	0.839	0.824	0.825	---
Fuel Color	text	Visual Screen*	Yellow	Pink	Pink	---
Visc @ 40°C	cSt	ASTM D7279(m)	3.0	2	2.1	---
Pensky-Martens Flash Point	°C	ASTM D7215*	52	54.2	55.9	---

SULFUR CONTENT		method	limit/base	current	history1	history2
Sulfur	ppm	ASTM D5185(m)	10	12	138	---

DISTILLATION		method	limit/base	current	history1	history2
Initial Boiling Point	°C	ASTM D2887*	165	159	159	---
5% Distillation Point	°C	ASTM D2887*		175	178	---
10% Distill Point	°C	ASTM D2887*	201	185	187	---
15% Distillation Point	°C	ASTM D2887*		191	194	---
20% Distill Point	°C	ASTM D2887*	216	199	202	---
30% Distill Point	°C	ASTM D2887*	230	214	217	---
40% Distill Point	°C	ASTM D2887*	243	227	231	---
50% Distill Point	°C	ASTM D2887*	255	242	244	---
60% Distill Point	°C	ASTM D2887*	267	258	259	---
70% Distill Point	°C	ASTM D2887*	280	273	273	---
80% Distill Point	°C	ASTM D2887*	295	290	290	---
85% Distillation Point	°C	ASTM D2887*		301	301	---
90% Distill Point	°C	ASTM D2887*	310	314	314	---
95% Distillation Point	°C	ASTM D2887*		334	336	---
Final Boiling Point	°C	ASTM D2887*	341	358	364	---

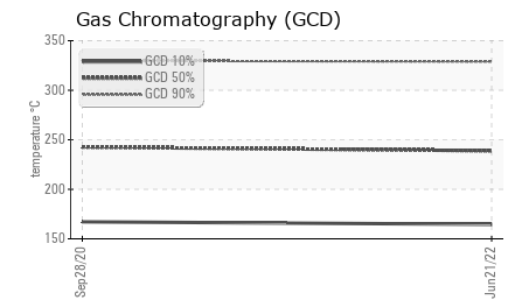
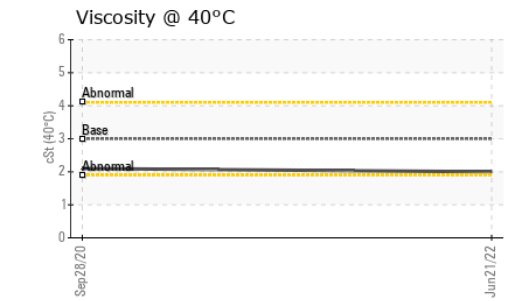
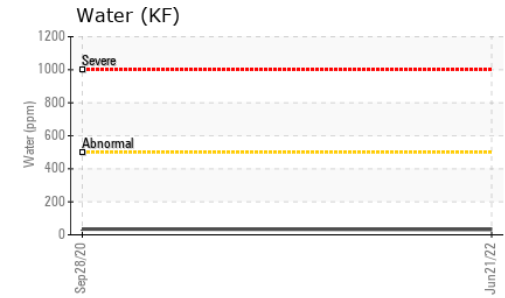
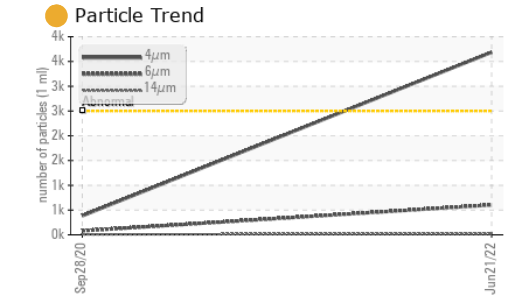
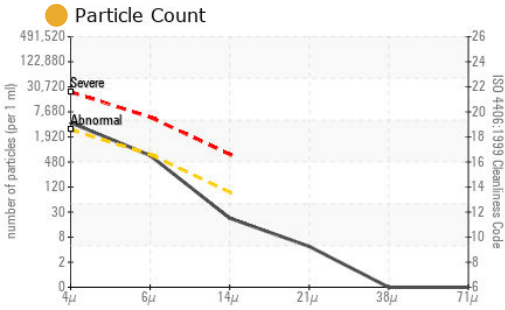
IGNITION QUALITY		method	limit/base	current	history1	history2
API Gravity		ASTM D1298*	37.7	40	40	---
Cetane Index		ASTM D4737*	<40.0	49	50	---

CONTAMINANTS		method	limit/base	current	history1	history2
Silicon	ppm	ASTM D5185(m)	<1.0	0	0	---
Sodium	ppm	ASTM D5185(m)	<0.1	<1	<1	---
Potassium	ppm	ASTM D5185(m)	<0.1	0	<1	---
Water	%	ASTM D6304*	<0.05	0.003	0.003	---
ppm Water	ppm	ASTM D6304*	<500	32.3	34.6	---

FLUID CLEANLINESS		method	limit/base	current	history1	history2
Particles >4µm		ASTM D7647	>2500	3687	384	---
Particles >6µm		ASTM D7647	>640	603	80	---
Particles >14µm		ASTM D7647	>80	19	8	---
Particles >21µm		ASTM D7647	>20	4	3	---
Particles >38µm		ASTM D7647	>4	0	0	---
Particles >71µm		ASTM D7647	>3	0	0	---
Oil Cleanliness		ISO 4406 (c)	>18/16/13	19/16/11	16/13/10	---



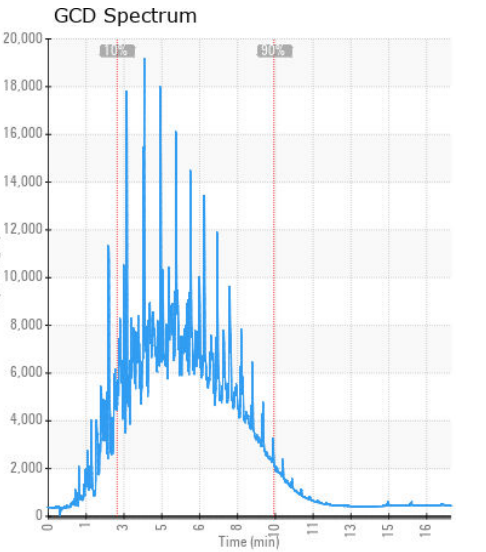
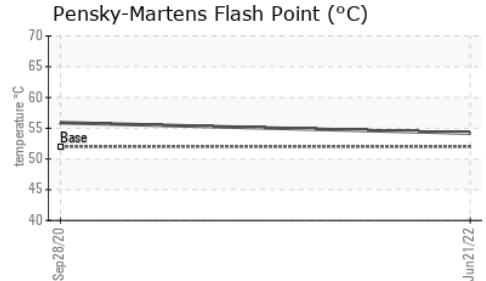
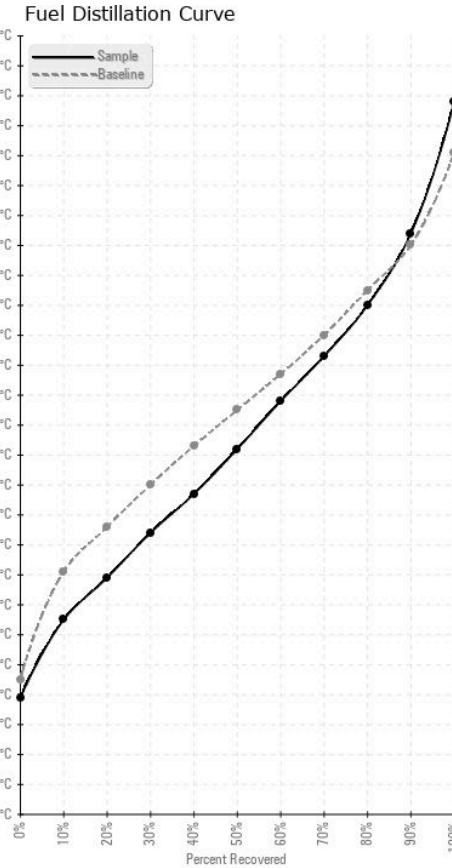
FUEL REPORT



HEAVY METALS	method	limit/base	current	history1	history2
Aluminum	ppm	ASTM D5185(m)	<0.1	0	---
Nickel	ppm	ASTM D5185(m)	<0.1	0	---
Lead	ppm	ASTM D5185(m)	<0.1	<1	---
Vanadium	ppm	ASTM D5185(m)	<0.1	0	---
Iron	ppm	ASTM D5185(m)	<0.1	<1	---
Calcium	ppm	ASTM D5185(m)	<0.1	0	---
Magnesium	ppm	ASTM D5185(m)	<1	0	---
Phosphorus	ppm	ASTM D5185(m)	<1	0	---
Zinc	ppm	ASTM D5185(m)	<1	<1	---

SAMPLE IMAGES	method	limit/base	current	history1	history2
Color					no image
Bottom					no image

GRAPHS



Laboratory : WearCheck - C8-1175 Appleby Line, Burlington, ON L7L 5H9
Sample No. : GD0005733
Lab Number : 02500896
Unique Number : 5433857
Test Package : FUEL (Additional Tests: CC Flash, GC-PercFuel, PrtCount)

Generatrice Drummond
 243 rue des ARTISANS
 SAINT-GERMAIN-DE-GRANTHAM, QC
 CA J0C 1K0
 Contact: Valerie Poirier
 poiirivalerie@generatricedrummond.com
 T: (819)398-6811
 F: (819)398-7022

Received : 20 Jul 2022
 Tested : 25 Jul 2022
 Diagnosed : 25 Jul 2022 - Kevin Marson
 To discuss this sample report, contact Customer Service at 1-800-268-2131.
 Test denoted (*) outside scope of accreditation, (m) method modified, (e) tested at external lab.
 Validity of results and interpretation are based on the sample and information as supplied.