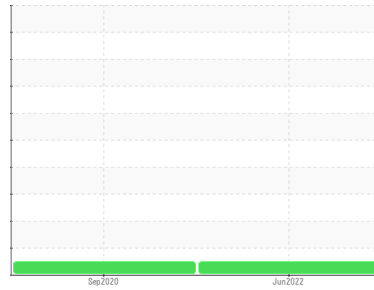




FUEL REPORT

Sample Rating Trend



NORMAL



Area

GARNISON OF MONTREAL [VQ5997]

Machine Id

GD4102

Component

Diesel Fuel

Fluid

No.2 DIESEL FUEL (LOW-SULPHUR) (--- GAL)

DIAGNOSIS

Recommendation

Les tests de laboratoire indiquent que ce carburant peut être utilisé et qu'il répond à toutes les exigences. Échantillonner de nouveau l'équipement au prochain intervalle de vidange afin d'en surveiller la condition.

Contaminants

La propreté du système est acceptable pour votre objectif de propreté ISO 4406. La teneur en eau est négligeable. Il n'y a aucun indice de contamination dans le carburant diesel.

Fuel Condition

Tous les tests en laboratoire indiquent que cet échantillon répond aux spécifications du diesel n° 2 à basse teneur en soufre (US EPA/CGSB-3.7-3 type B).

SAMPLE INFORMATION		method	limit/base	current	history1	history2
Sample Number	Client Info			GD0005731	GD0004544	---
Sample Date	Client Info			23 Jun 2022	24 Sep 2020	---
Machine Age	hrs	Client Info		0	653	---
Sample Status				NORMAL	NORMAL	---

PHYSICAL PROPERTIES		method	limit/base	current	history1	history2
Specific Gravity		ASTM D1298*	0.839	0.822	0.824	---
Fuel Color	text	Visual Screen*	Yellow	Orang	Pink	---
Visc @ 40°C	cSt	ASTM D7279(m)	3.0	1.9	2.1	---
Pensky-Martens Flash Point	°C	ASTM D7215*	52	49	56.1	---

SULFUR CONTENT		method	limit/base	current	history1	history2
Sulfur	ppm	ASTM D5185(m)	250	17	133	---

DISTILLATION		method	limit/base	current	history1	history2
Initial Boiling Point	°C	ASTM D2887*	165	155	159	---
5% Distillation Point	°C	ASTM D2887*		170	178	---
10% Distill Point	°C	ASTM D2887*	201	178	188	---
15% Distillation Point	°C	ASTM D2887*		184	195	---
20% Distill Point	°C	ASTM D2887*	216	191	204	---
30% Distill Point	°C	ASTM D2887*	230	208	218	---
40% Distill Point	°C	ASTM D2887*	243	223	232	---
50% Distill Point	°C	ASTM D2887*	255	240	246	---
60% Distill Point	°C	ASTM D2887*	267	255	260	---
70% Distill Point	°C	ASTM D2887*	280	270	275	---
80% Distill Point	°C	ASTM D2887*	295	287	291	---
85% Distillation Point	°C	ASTM D2887*		298	303	---
90% Distill Point	°C	ASTM D2887*	310	311	315	---
95% Distillation Point	°C	ASTM D2887*		332	335	---
Final Boiling Point	°C	ASTM D2887*	341	357	357	---

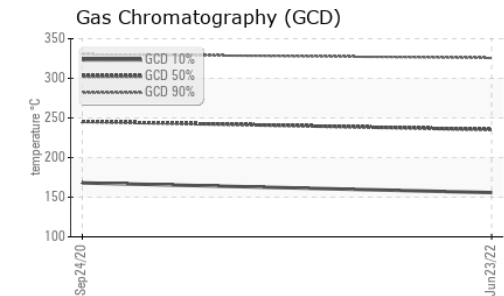
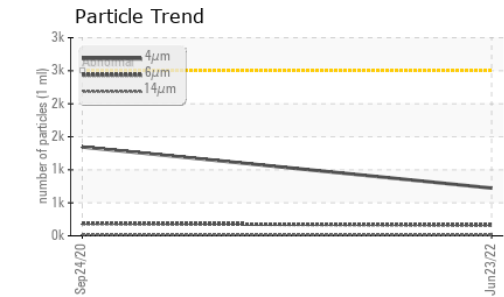
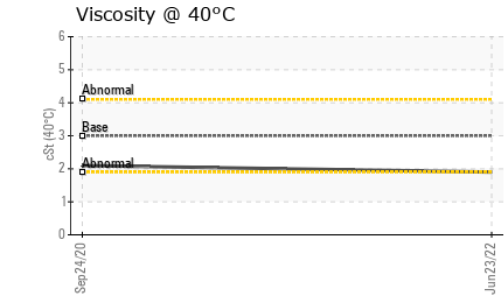
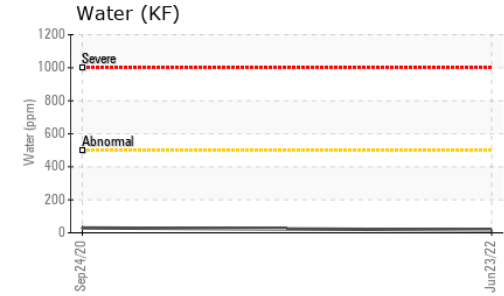
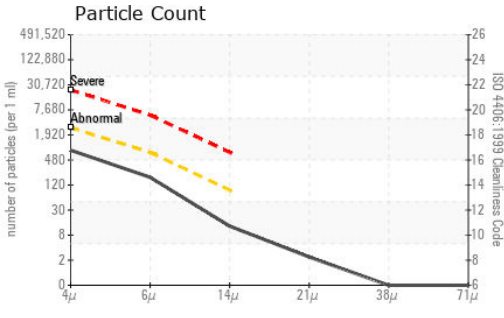
IGNITION QUALITY		method	limit/base	current	history1	history2
API Gravity		ASTM D1298*	37.7	40	40	---
Cetane Index		ASTM D4737*	<40.0	49	50	---

CONTAMINANTS		method	limit/base	current	history1	history2
Silicon	ppm	ASTM D5185(m)	<1.0	0	0	---
Sodium	ppm	ASTM D5185(m)	<0.1	0	<1	---
Potassium	ppm	ASTM D5185(m)	<0.1	0	0	---
Water	%	ASTM D6304*	<0.05	0.002	0.003	---
ppm Water	ppm	ASTM D6304*	<500	17.3	29.8	---

FLUID CLEANLINESS		method	limit/base	current	history1	history2
Particles >4µm		ASTM D7647	>2500	723	1345	---
Particles >6µm		ASTM D7647	>640	162	186	---
Particles >14µm		ASTM D7647	>80	11	16	---
Particles >21µm		ASTM D7647	>20	2	8	---
Particles >38µm		ASTM D7647	>4	0	0	---
Particles >71µm		ASTM D7647	>3	0	0	---
Oil Cleanliness		ISO 4406 (c)	>18/16/13	17/15/11	18/15/11	---

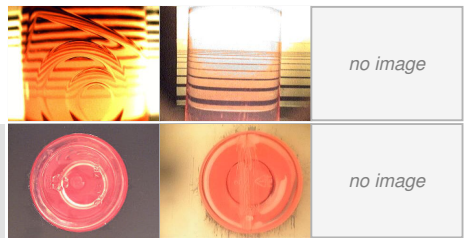


FUEL REPORT

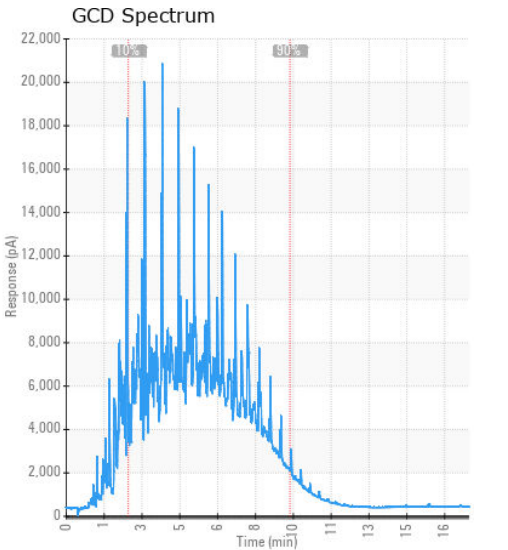
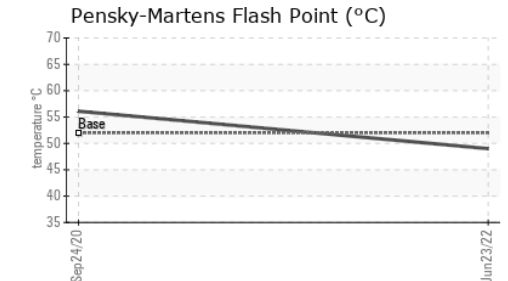
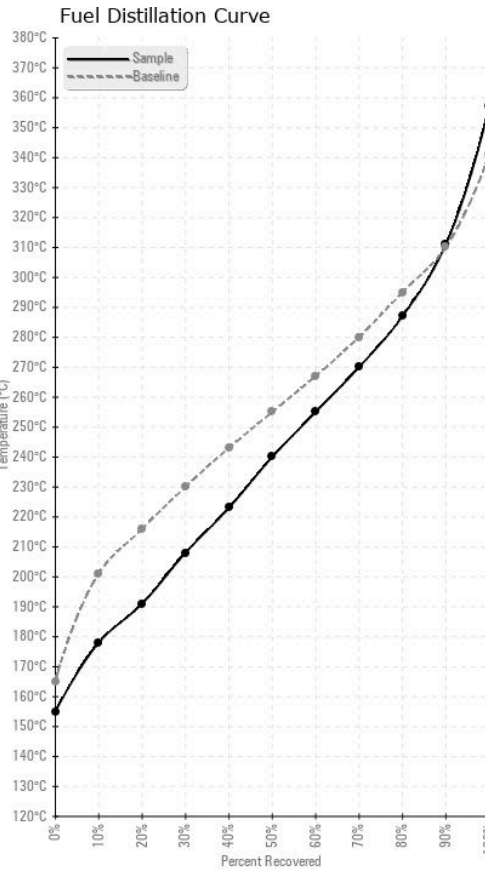


HEAVY METALS	method	limit/base	current	history1	history2
Aluminum	ppm	ASTM D5185(m)	<0.1	0	---
Nickel	ppm	ASTM D5185(m)	<0.1	0	---
Lead	ppm	ASTM D5185(m)	<0.1	<1	---
Vanadium	ppm	ASTM D5185(m)	<0.1	0	---
Iron	ppm	ASTM D5185(m)	<0.1	<1	---
Calcium	ppm	ASTM D5185(m)	<0.1	<1	---
Magnesium	ppm	ASTM D5185(m)	<0.1	<1	---
Phosphorus	ppm	ASTM D5185(m)	<0.1	1	---
Zinc	ppm	ASTM D5185(m)	<0.1	<1	---

SAMPLE IMAGES	method	limit/base	current	history1	history2
Color					
Bottom					



GRAPHS



Laboratory : WearCheck - C8-1175 Appleby Line, Burlington, ON L7L 5H9
Sample No. : GD0005731
Lab Number : 02500898
Unique Number : 5433859
Test Package : FUEL (Additional Tests: CC Flash, GC-PercFuel, PrtCount)

Generatrice Drummond
 243 rue des ARTISANS
 SAINT-GERMAIN-DE-GRANTHAM, QC
 CA J0C 1K0
 Contact: Valerie Poirier
 poiervalerie@generatricedrummond.com

To discuss this sample report, contact Customer Service at 1-800-268-2131.
 Test denoted (*) outside scope of accreditation, (m) method modified, (e) tested at external lab.
 Validity of results and interpretation are based on the sample and information as supplied.

T: (819)398-6811
 F: (819)398-7022