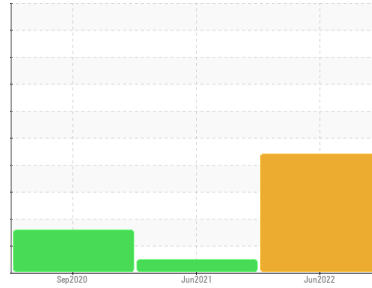




FUEL REPORT

Area
GARNISON OF MONTREAL [VQ6012]
 Machine Id
CATERPILLAR GD12159
 Component
Diesel Fuel
 Fluid
No.2 DIESEL FUEL (LOW-SULPHUR) (--- LTR)

Sample Rating Trend



ISO



DIAGNOSIS

▲ Recommendation

Nous vous recommandons de vérifier tous les endroits par lesquels des contaminants peuvent pénétrer dans le système. Les tests de laboratoire indiquent que ce carburant peut être utilisé et qu'il répond à toutes les exigences. Nous vous recommandons de remplacer le filtre et d'utiliser un système de filtrage hors-ligne afin d'améliorer la propreté du fluide. Le reniflard d'air doit être réparé. S'il n'est pas classé, nous vous recommandons de le remplacer par un reniflard à air adapté au micron et / ou au dessicant. Si évalué, nous vous recommandons de réparer / remplacer le reniflard. Nous vous recommandons de filtrer ce fluide avant de l'utiliser. Échantillonner de nouveau dans 30 à 45 jours afin de contrôler la situation.

▲ Contaminants

Il y a une grande quantité de particules (de 4 à 38 microns) dans le carburant. La teneur en eau est négligeable.

Fuel Condition

le carburant peut encore servir si la contamination peut être réduite à un niveau acceptable. Tous les tests en laboratoire indiquent que cet échantillon répond aux spécifications du diesel n° 2 à basse teneur en soufre (US EPA/CGSB-3.7-3 type B).

SAMPLE INFORMATION

	method	limit/base	current	history1	history2
Sample Number	Client Info		GD0005723	GD0004920	GD0004538
Sample Date	Client Info		30 Jun 2022	21 Jun 2021	29 Sep 2020
Machine Age	hrs	Client Info	0	0	221
Sample Status			SEVERE	NORMAL	ATTENTION

PHYSICAL PROPERTIES

	method	limit/base	current	history1	history2
Specific Gravity	ASTM D1298*	0.839	0.822	0.824	0.826
Fuel Color	text	Visual Screen*	Orang	Pink	Pink
Visc @ 40°C	cSt	ASTM D7279(m)	1.9	2.0	2.3
Pensky-Martens Flash Point	°C	ASTM D7215*	47	---	52.6

SULFUR CONTENT

	method	limit/base	current	history1	history2
Sulfur	ppm	ASTM D5185(m)	39	42	10

DISTILLATION

	method	limit/base	current	history1	history2
Initial Boiling Point	°C	ASTM D2887*	153	154	156
5% Distillation Point	°C	ASTM D2887*	170	169	174
10% Distill Point	°C	ASTM D2887*	179	179	186
15% Distillation Point	°C	ASTM D2887*	186	186	193
20% Distill Point	°C	ASTM D2887*	193	194	202
30% Distill Point	°C	ASTM D2887*	209	209	219
40% Distill Point	°C	ASTM D2887*	224	223	234
50% Distill Point	°C	ASTM D2887*	240	239	250
60% Distill Point	°C	ASTM D2887*	256	255	265
70% Distill Point	°C	ASTM D2887*	271	270	282
80% Distill Point	°C	ASTM D2887*	288	288	301
85% Distillation Point	°C	ASTM D2887*	298	299	311
90% Distill Point	°C	ASTM D2887*	311	313	324
95% Distillation Point	°C	ASTM D2887*	331	334	342
Final Boiling Point	°C	ASTM D2887*	341	357	362

IGNITION QUALITY

	method	limit/base	current	history1	history2
API Gravity	ASTM D1298*	37.7	40	40	39
Cetane Index	ASTM D4737*	<40.0	49	48	50

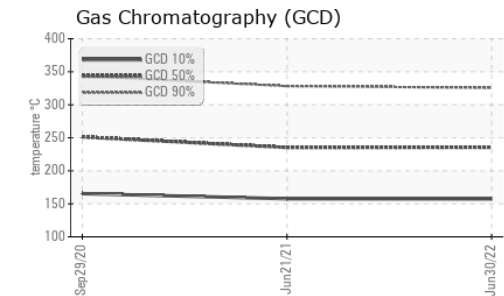
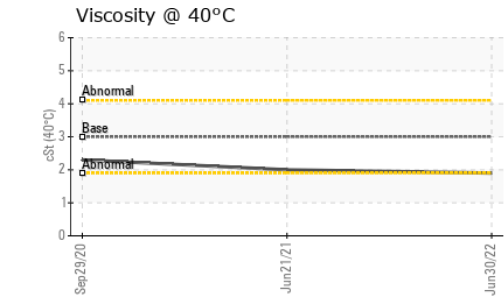
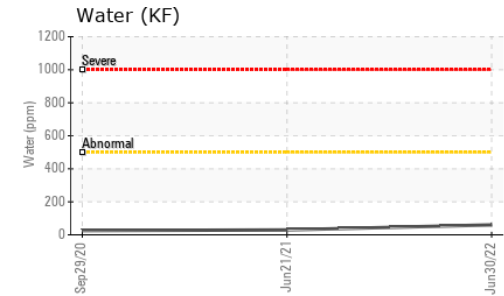
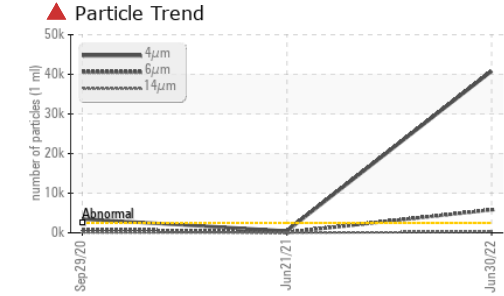
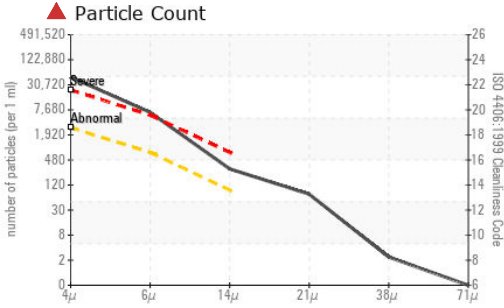
CONTAMINANTS

	method	limit/base	current	history1	history2
Silicon	ppm	ASTM D5185(m)	0	0	0
Sodium	ppm	ASTM D5185(m)	<1	<1	<1
Potassium	ppm	ASTM D5185(m)	0	0	<1
Water	%	ASTM D6304*	0.006	0.003	0.003
ppm Water	ppm	ASTM D6304*	60.3	29.7	25.9

FLUID CLEANLINESS

	method	limit/base	current	history1	history2
Particles >4µm	ASTM D7647	>2500	▲ 40794	467	● 3471
Particles >6µm	ASTM D7647	>640	▲ 5808	111	● 871
Particles >14µm	ASTM D7647	>80	▲ 258	8	● 89
Particles >21µm	ASTM D7647	>20	▲ 64	2	● 40
Particles >38µm	ASTM D7647	>4	2	0	5
Particles >71µm	ASTM D7647	>3	0	0	0
Oil Cleanliness	ISO 4406 (c)	>18/16/13	▲ 23/20/15	16/14/10	● 19/17/14

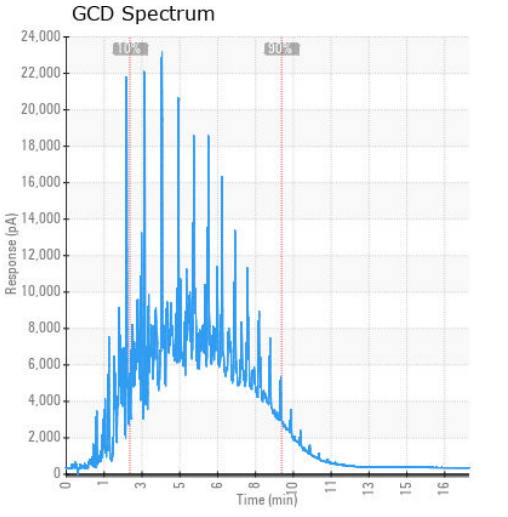
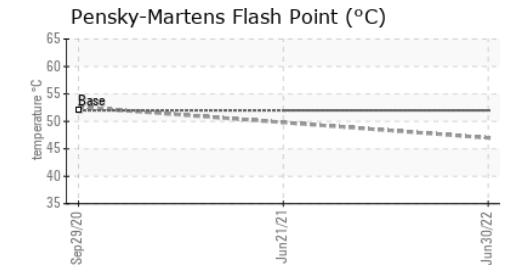
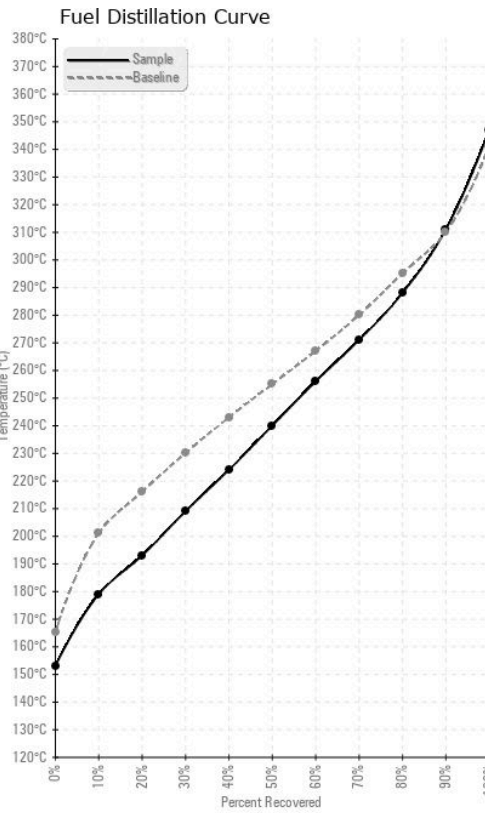
FUEL REPORT



HEAVY METALS	method	limit/base	current	history1	history2
Aluminum	ppm	ASTM D5185(m)	<0.1	0	0
Nickel	ppm	ASTM D5185(m)	<0.1	0	0
Lead	ppm	ASTM D5185(m)	<1	<1	2
Vanadium	ppm	ASTM D5185(m)	<0.1	0	0
Iron	ppm	ASTM D5185(m)	<1	<1	<1
Calcium	ppm	ASTM D5185(m)	<0.1	<1	0
Magnesium	ppm	ASTM D5185(m)	<0.1	<1	0
Phosphorus	ppm	ASTM D5185(m)	<0.1	<1	<1
Zinc	ppm	ASTM D5185(m)	<0.1	<1	0

SAMPLE IMAGES	method	limit/base	current	history1	history2
Color					
Bottom					

GRAPHS



Laboratory : WearCheck - C8-1175 Appleby Line, Burlington, ON L7L 5H9
Sample No. : GD0005723
Lab Number : 02502398
Unique Number : 5435359
Test Package : FUEL (Additional Tests: CC Flash, GC-PercFuel, PrtCount)

Generatrice Drummond
 243 rue des ARTISANS
 SAINT-GERMAIN-DE-GRANTHAM, QC
 CA J0C 1K0
 Contact: Valerie Poirier
 poiirivalerie@generatricedrummond.com
 T: (819)398-6811
 F: (819)398-7022

To discuss this sample report, contact Customer Service at 1-800-268-2131.
 Test denoted (*) outside scope of accreditation, (m) method modified, (e) tested at external lab.
 Validity of results and interpretation are based on the sample and information as supplied.