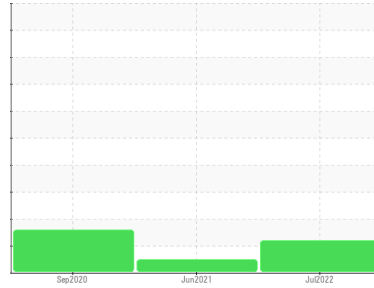




FUEL REPORT

Sample Rating Trend

ISO



Area

GARNISON OF MONTREAL [VQ6029]

Machine Id

GD4100

Component

Diesel Fuel

Fluid

No.2 DIESEL FUEL (ULTRALOW SULPHUR) (--- LTR)

DIAGNOSIS

Recommendation

Les tests de laboratoire indiquent que ce carburant peut être utilisé et qu'il répond à toutes les exigences. Nous vous recommandons de filtrer ce fluide avant de l'utiliser. Nous recommandons le remplacement des filtres de ce composant. Nous vous recommandons d'échantillonner de nouveau dès que possible afin de contrôler la situation.

Contaminants

Il y a une quantité modérée de particules (de 4 à 14 microns) dans le carburant. La teneur en eau est négligeable.

Fuel Condition

Tous les essais en laboratoire indiquent que cet échantillon satisfait aux spécifications pour le carburant diesel à ultra-faible teneur de soufre No.2 (US EPA/CGSB-3.517-3 type B). le carburant peut encore servir si la contamination peut être réduite à un niveau acceptable.

SAMPLE INFORMATION

method	limit/base	current	history1	history2
Sample Number	Client Info	GD0005718	GD0004923	GD0004437
Sample Date	Client Info	21 Jul 2022	21 Jun 2021	29 Sep 2020
Machine Age	hrs	0	0	547
Sample Status		ABNORMAL	NORMAL	ABNORMAL

PHYSICAL PROPERTIES

method	limit/base	current	history1	history2		
Specific Gravity	ASTM D1298*	0.839	0.833	0.827	0.827	
Fuel Color	text	Visual Screen*	Yellow	Orang	Pink	Pink
Visc @ 40°C	cSt	ASTM D7279(m)	3.0	2.2	2.1	2.3
Pensky-Martens Flash Point	°C	ASTM D7215*	52	50.1	55	52.7

SULFUR CONTENT

method	limit/base	current	history1	history2		
Sulfur	ppm	ASTM D5185(m)	10	8	11	11

DISTILLATION

method	limit/base	current	history1	history2		
Initial Boiling Point	°C	ASTM D2887*	165	153	154	156
5% Distillation Point	°C	ASTM D2887*		175	170	175
10% Distill Point	°C	ASTM D2887*	201	186	180	186
15% Distillation Point	°C	ASTM D2887*		193	188	194
20% Distill Point	°C	ASTM D2887*	216	202	196	203
30% Distill Point	°C	ASTM D2887*	230	219	212	220
40% Distill Point	°C	ASTM D2887*	243	233	227	235
50% Distill Point	°C	ASTM D2887*	255	248	243	251
60% Distill Point	°C	ASTM D2887*	267	263	260	266
70% Distill Point	°C	ASTM D2887*	280	278	276	282
80% Distill Point	°C	ASTM D2887*	295	296	293	301
85% Distillation Point	°C	ASTM D2887*		306	304	312
90% Distill Point	°C	ASTM D2887*	310	319	318	324
95% Distillation Point	°C	ASTM D2887*		337	337	341
Final Boiling Point	°C	ASTM D2887*	341	348	357	352

IGNITION QUALITY

method	limit/base	current	history1	history2	
API Gravity	ASTM D1298*	37.7	38	39	39
Cetane Index	ASTM D4737*	<40.0	47	48	50

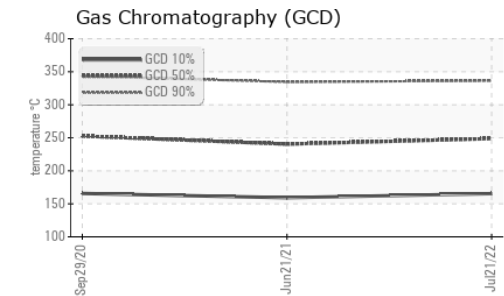
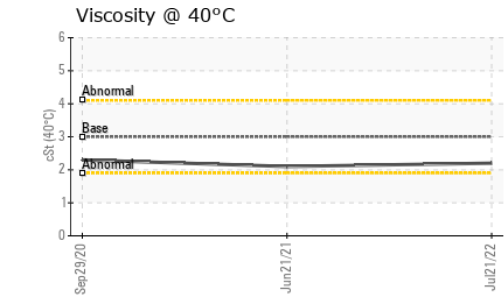
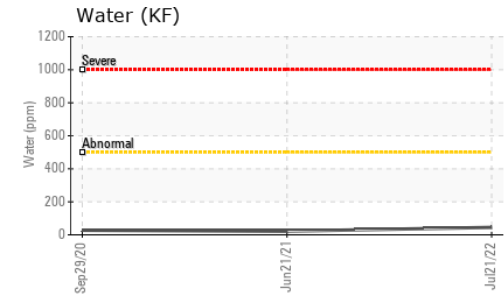
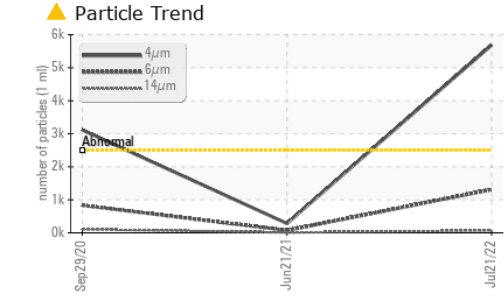
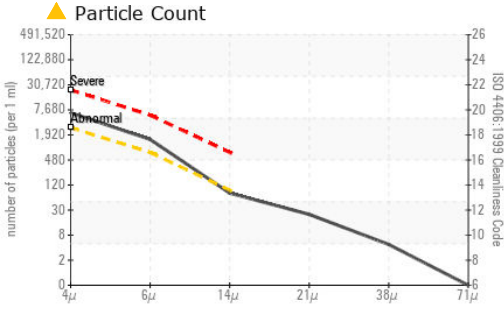
CONTAMINANTS

method	limit/base	current	history1	history2		
Silicon	ppm	ASTM D5185(m)	<1.0	<1	4	0
Sodium	ppm	ASTM D5185(m)	<0.1	0	<1	<1
Potassium	ppm	ASTM D5185(m)	<0.1	0	0	<1
Water	%	ASTM D6304*	<0.05	0.004	0.002	0.003
ppm Water	ppm	ASTM D6304*	<500	45.0	22.2	27.6

FLUID CLEANLINESS

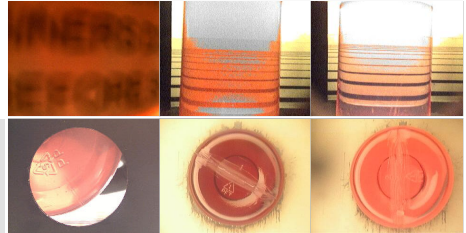
method	limit/base	current	history1	history2	
Particles >4µm	ASTM D7647	>2500	▲ 5686	283	● 3114
Particles >6µm	ASTM D7647	>640	▲ 1311	73	● 832
Particles >14µm	ASTM D7647	>80	68	7	● 106
Particles >21µm	ASTM D7647	>20	21	2	▲ 43
Particles >38µm	ASTM D7647	>4	4	0	4
Particles >71µm	ASTM D7647	>3	0	0	0
Oil Cleanliness	ISO 4406 (c)	>18/16/13	▲ 20/18/13	15/13/10	● 19/17/14

FUEL REPORT

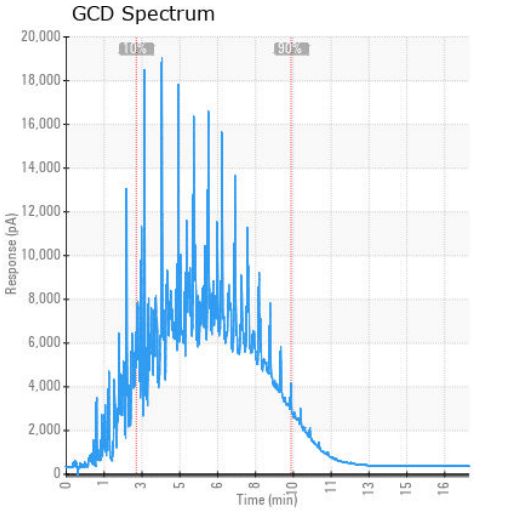
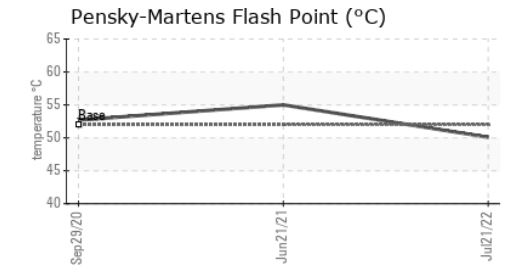
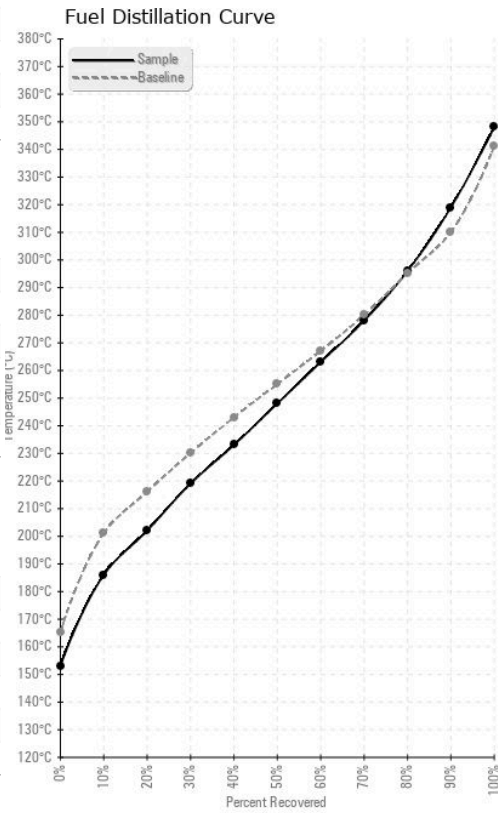


HEAVY METALS	method	limit/base	current	history1	history2
Aluminum	ppm	ASTM D5185(m)	<0.1	0	0
Nickel	ppm	ASTM D5185(m)	<0.1	0	0
Lead	ppm	ASTM D5185(m)	<0.1	0	<1
Vanadium	ppm	ASTM D5185(m)	<0.1	0	0
Iron	ppm	ASTM D5185(m)	<0.1	<1	<1
Calcium	ppm	ASTM D5185(m)	<0.1	0	0
Magnesium	ppm	ASTM D5185(m)	<0.1	<1	0
Phosphorus	ppm	ASTM D5185(m)	<0.1	0	0
Zinc	ppm	ASTM D5185(m)	<0.1	0	0

SAMPLE IMAGES	method	limit/base	current	history1	history2
Color					
Bottom					



GRAPHS



Laboratory : WearCheck - C8-1175 Appleby Line, Burlington, ON L7L 5H9
Sample No. : GD0005718
Lab Number : 02502399
Unique Number : 5435360
Test Package : FUEL (Additional Tests: CC Flash, GC-PercFuel, PrtCount)

Generatrice Drummond
 243 rue des ARTISANS
 SAINT-GERMAIN-DE-GRANTHAM, QC
 CA J0C 1K0
 Contact: Valerie Poirier
 poiirivalerie@generatricedrummond.com
 T: (819)398-6811
 F: (819)398-7022

Received : 28 Jul 2022
 Tested : 31 Jul 2022
 Diagnosed : 02 Aug 2022 - Kevin Marson
 To discuss this sample report, contact Customer Service at 1-800-268-2131.
 Test denoted (*) outside scope of accreditation, (m) method modified, (e) tested at external lab.
 Validity of results and interpretation are based on the sample and information as supplied.