



OIL ANALYSIS REPORT

Sample Rating Trend

ISO



Area

SANI SABLE [02507787]

Machine Id

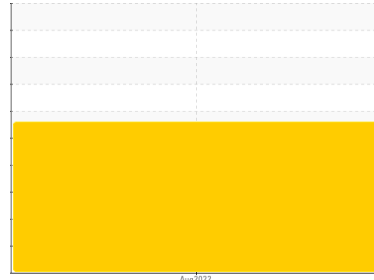
KOMATSU PC450 CB240 (S/N A10326)

Component

Hydraulic System

Fluid

SINTO MULTIGRADE BIO (--- GAL)



DIAGNOSIS

▲ Recommendation

Nous vous recommandons de vérifier tous les endroits par lesquels des contaminants peuvent pénétrer dans le système. Nous vous recommandons de remplacer le filtre et d'utiliser un système de filtrage hors-ligne afin d'améliorer la propreté du fluide. Le reniflard d'air doit être réparé. S'il n'est pas classé, nous vous recommandons de le remplacer par un reniflard à air adapté au micron et / ou au dessiccant. Si évalué, nous vous recommandons de réparer / remplacer le reniflard. Confirm the source of the lubricant being utilized for top-up/fill. Échantillonner de nouveau dans 30 à 45 jours afin de contrôler la situation.

Wear

Les taux d'usure de tous les composants sont normaux.

▲ Contamination

Il y a une grande quantité de particules (de 4 à >71 microns) dans l'huile. Il y a une faible concentration (0.3%) d'huile minérale présente dans le fluide.

● Fluid Condition

Les niveaux d'additifs indiquent l'ajout d'une autre marque ou d'un autre type d'huile. l'huile peut encore servir si la contamination peut être réduite à un niveau acceptable.

SAMPLE INFORMATION

	method	limit/base	current	history1	history2
Sample Number	Client Info		PP	---	---
Sample Date	Client Info		28 Aug 2022	---	---
Machine Age	hrs	Client Info	0	---	---
Oil Age	hrs	Client Info	0	---	---
Oil Changed	Client Info		N/A	---	---
Sample Status			SEVERE	---	---

CONTAMINATION

	method	limit/base	current	history1	history2
Water	WC Method	>0.05	NEG	---	---

WEAR METALS

	method	limit/base	current	history1	history2
Iron	ppm	ASTM D5185(m) >20	4	---	---
Chromium	ppm	ASTM D5185(m) >20	1	---	---
Nickel	ppm	ASTM D5185(m) >20	0	---	---
Titanium	ppm	ASTM D5185(m)	<1	---	---
Silver	ppm	ASTM D5185(m)	0	---	---
Aluminum	ppm	ASTM D5185(m) >20	<1	---	---
Lead	ppm	ASTM D5185(m) >20	0	---	---
Copper	ppm	ASTM D5185(m) >20	<1	---	---
Tin	ppm	ASTM D5185(m) >20	0	---	---
Antimony	ppm	ASTM D5185(m)	<1	---	---
Vanadium	ppm	ASTM D5185(m)	0	---	---
Beryllium	ppm	ASTM D5185(m)	0	---	---
Cadmium	ppm	ASTM D5185(m)	0	---	---

ADDITIVES

	method	limit/base	current	history1	history2
Boron	ppm	ASTM D5185(m) 1	1	---	---
Barium	ppm	ASTM D5185(m) 0	0	---	---
Molybdenum	ppm	ASTM D5185(m) 0	0	---	---
Manganese	ppm	ASTM D5185(m) 0	0	---	---
Magnesium	ppm	ASTM D5185(m) 0	2	---	---
Calcium	ppm	ASTM D5185(m) 8	237	---	---
Phosphorus	ppm	ASTM D5185(m) 1325	1247	---	---
Zinc	ppm	ASTM D5185(m) 6	93	---	---
Sulfur	ppm	ASTM D5185(m) 2400	2844	---	---
Lithium	ppm	ASTM D5185(m)	<1	---	---

CONTAMINANTS

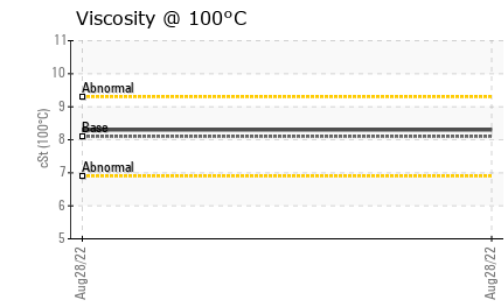
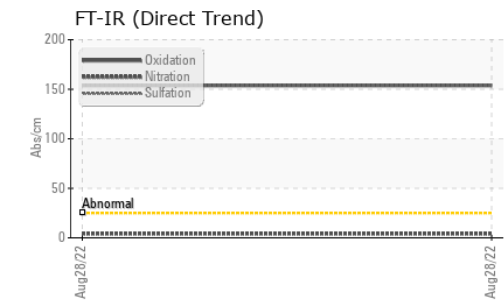
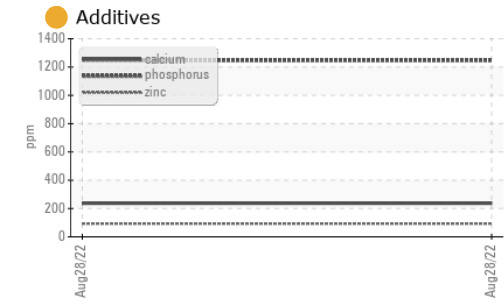
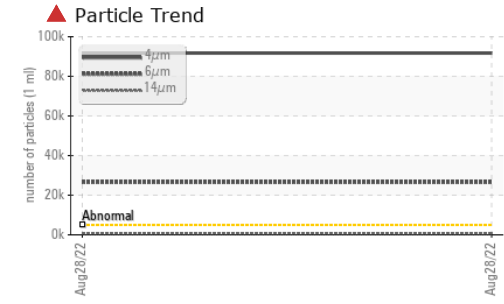
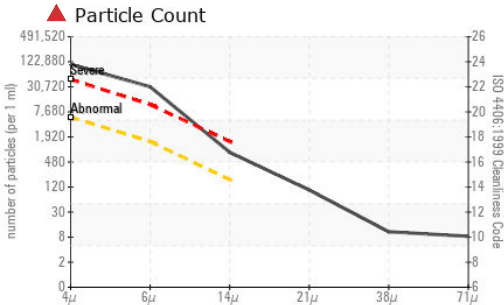
	method	limit/base	current	history1	history2
Silicon	ppm	ASTM D5185(m) >15	5	---	---
Sodium	ppm	ASTM D5185(m)	1	---	---
Potassium	ppm	ASTM D5185(m) >20	1	---	---

INFRA-RED

	method	limit/base	current	history1	history2
Soot %	%	ASTM D7844*	0	---	---
Nitration	Abs/cm	ASTM D7624*	4.2	---	---
Sulfation	Abs./1mm	ASTM D7415*	153.7	---	---
Mineral Oil Content	%	ASTM D7418*	<5.0%	---	---



OIL ANALYSIS REPORT



Laboratory : WearCheck - C8-1175 Appleby Line, Burlington, ON L7L 5H9
Sample No. : PP
Lab Number : 02507788
Unique Number : 5448758
Test Package : MOB 2 (Additional Tests: FT-IR, KV100, Mineral Oil Content, VI)

Received : 29 Aug 2022
Tested : 30 Aug 2022
Diagnosed : 01 Sep 2022 - Bill Quesnel

To discuss this sample report, contact Customer Service at 1-800-268-2131.
 Test denoted (*) outside scope of accreditation, (m) method modified, (e) tested at external lab.
 Validity of results and interpretation are based on the sample and information as supplied.

SINTO INC
 3750, 14 AVE WEST
 SAINT-GEORGES DE BEAUCES, QC
 CA G5Y 8E3
 Contact: Jimmie Roy
 j.roy@sinto.ca
 T: (418)227-6442
 F: (418)228-5592

FLUID CLEANLINESS	method	limit/base	current	history1	history2
Particles >4µm	ASTM D7647	>5000	▲ 91746	---	---
Particles >6µm	ASTM D7647	>1300	▲ 26590	---	---
Particles >14µm	ASTM D7647	>160	▲ 720	---	---
Particles >21µm	ASTM D7647	>40	▲ 90	---	---
Particles >38µm	ASTM D7647	>10	9	---	---
Particles >71µm	ASTM D7647	>3	▲ 7	---	---
Oil Cleanliness	ISO 4406 (c)	>19/17/14	▲ 24/22/17	---	---

FLUID DEGRADATION	method	limit/base	current	history1	history2
Oxidation	Abs./1mm	ASTM D7414*	153.7	---	---

VISUAL	method	limit/base	current	history1	history2
White Metal	scalar	Visual*	NONE	---	---
Yellow Metal	scalar	Visual*	NONE	---	---
Precipitate	scalar	Visual*	NONE	---	---
Silt	scalar	Visual*	NONE	---	---
Debris	scalar	Visual*	NONE	---	---
Sand/Dirt	scalar	Visual*	NONE	---	---
Appearance	scalar	Visual*	NORML	---	---
Odor	scalar	Visual*	NORML	---	---
Emulsified Water	scalar	Visual*	>0.05	---	---
Free Water	scalar	Visual*	NEG	---	---

FLUID PROPERTIES	method	limit/base	current	history1	history2	
Visc @ 40°C	cSt	ASTM D7279(m)	47.0	47.9	---	---
Visc @ 100°C	cSt	ASTM D7279(m)	8.1	8.3	---	---
Viscosity Index (VI)	Scale	ASTM D2270*	145	148	---	---

SAMPLE IMAGES	method	limit/base	current	history1	history2
Color				no image	no image
Bottom				no image	no image



MINERAL OIL CONTENT REPORT

PASS

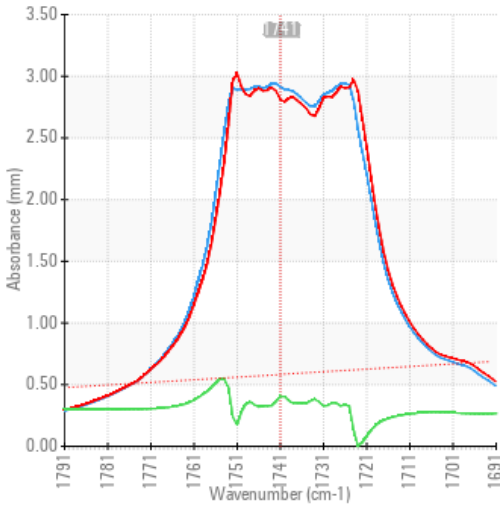


Area
SANI SABLE [02507787]
 Machine Id
KOMATSU PC450 CB240 (S/N A10326)
 Component
Hydraulic System
 Fluid
SINTO MULTIGRADE BIO (--- GAL)

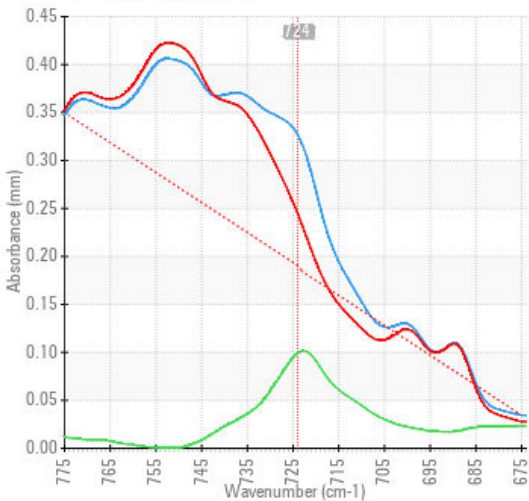
SPECTRAL ANALYSIS

		method	limit/base	current	history1	history2
Zinc	ppm	ASTM D5185(m)	6	● 93	---	---
Mineral Oil Content	%	ASTM D7418*	<5.0%	0.3	---	---

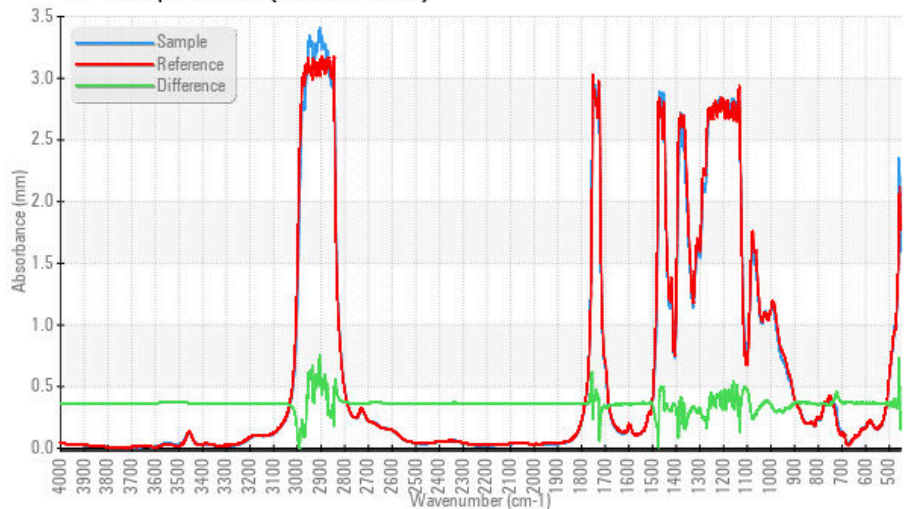
FT-IR - Esters I



FT-IR - Esters II



FT-IR Spectrum (Absorbance)



ISO 17025:2017
 Accredited
 Laboratory

Laboratory : WearCheck - C8-1175 Appleby Line, Burlington, ON L7L 5H9
Sample No. : PP
Lab Number : 02507788
Unique Number : 5448758
Test Package : MOB 2 (Additional Tests: FT-IR, KV100, Mineral Oil Content, VI)

Received : 29 Aug 2022
Tested : 30 Aug 2022
Diagnosed : 01 Sep 2022 - Bill Quesnel

To discuss this sample report, contact Customer Service at 1-800-268-2131.

Test denoted (*) outside scope of accreditation, (m) method modified, (e) tested at external lab.

Validity of results and interpretation are based on the sample and information as supplied.

SINTO INC
 3750, 14 AVE WEST
 SAINT-GEORGES DE BEAUCES, QC
 CA G5Y 8E3
 Contact: Jimmie Roy
 j.roy@sinto.ca
 T: (418)227-6442
 F: (418)228-5592

This page left intentionally blank