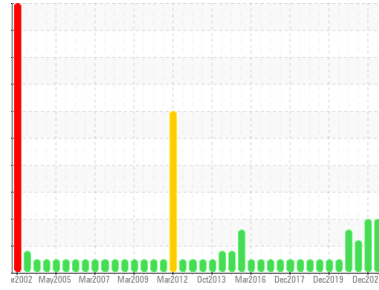




# OIL ANALYSIS REPORT

Sample Rating Trend



## VISUAL METAL



Area  
**[193425]**  
 Machine Id  
**PUN G1 EXBR**  
 Component  
**Bearing**  
 Fluid  
**ESSO TERESSO ISO 68 (5 LTR)**

### DIAGNOSIS

#### Recommendation

We advise that you check for visible metal particles in the oil. We recommend that you drain the oil from the component if this has not already been done. We recommend an early resample to monitor this condition.

#### Wear

Copper ppm levels are abnormal. Moderate concentration of visible metal present. Bearing wear is indicated.

#### Contamination

There is no indication of any contamination in the oil.

#### Fluid Condition

The AN level is acceptable for this fluid. The oil is no longer serviceable as a result of the abnormal and/or severe wear. NOTE: The color of the oil is darker than previous samples.

### SAMPLE INFORMATION

	method	limit/base	current	history1	history2
Sample Number	Client Info		<b>WC0445170</b>	WC0445288	WC0445285
Sample Date	Client Info		<b>29 Jun 2022</b>	30 Dec 2021	08 Oct 2021
Machine Age	yrs	Client Info	<b>1</b>	1	0
Oil Age	yrs	Client Info	<b>1</b>	0	0
Oil Changed	Client Info		<b>Not Changed</b>	Not Changed	Not Changed
Sample Status			<b>ABNORMAL</b>	ABNORMAL	ABNORMAL

### CONTAMINATION

	method	limit/base	current	history1	history2
Water	WC Method	>2	<b>NEG</b>	NEG	NEG

### WEAR METALS

	method	limit/base	current	history1	history2
PQ	ASTM D8184*		<b>0</b>	0	0
Iron	ppm	ASTM D5185(m) >63	<b>&lt;1</b>	<1	<1
Chromium	ppm	ASTM D5185(m)	<b>0</b>	0	0
Nickel	ppm	ASTM D5185(m)	<b>0</b>	0	<1
Titanium	ppm	ASTM D5185(m)	<b>0</b>	0	0
Silver	ppm	ASTM D5185(m)	<b>0</b>	0	0
Aluminum	ppm	ASTM D5185(m) >2	<b>&lt;1</b>	<1	<1
Lead	ppm	ASTM D5185(m) >161	<b>59</b>	51	58
Copper	ppm	ASTM D5185(m) >13	<b>▲ 16</b>	▲ 18	11
Tin	ppm	ASTM D5185(m) >27	<b>1</b>	1	1
Antimony	ppm	ASTM D5185(m)	<b>2</b>	1	2
Vanadium	ppm	ASTM D5185(m)	<b>0</b>	0	0
Beryllium	ppm	ASTM D5185(m)	<b>0</b>	0	0
Cadmium	ppm	ASTM D5185(m)	<b>0</b>	0	0

### ADDITIVES

	method	limit/base	current	history1	history2
Boron	ppm	ASTM D5185(m) 4.5	<b>0</b>	<1	<1
Barium	ppm	ASTM D5185(m) 0.4	<b>0</b>	0	0
Molybdenum	ppm	ASTM D5185(m) 0	<b>0</b>	0	0
Manganese	ppm	ASTM D5185(m)	<b>0</b>	0	0
Magnesium	ppm	ASTM D5185(m) 0	<b>0</b>	0	0
Calcium	ppm	ASTM D5185(m) 0	<b>&lt;1</b>	<1	<1
Phosphorus	ppm	ASTM D5185(m) 0.7	<b>21</b>	16	<1
Zinc	ppm	ASTM D5185(m) 0	<b>30</b>	25	20
Sulfur	ppm	ASTM D5185(m) 1315	<b>2185</b>	2157	2268
Lithium	ppm	ASTM D5185(m)	<b>&lt;1</b>	<1	<1

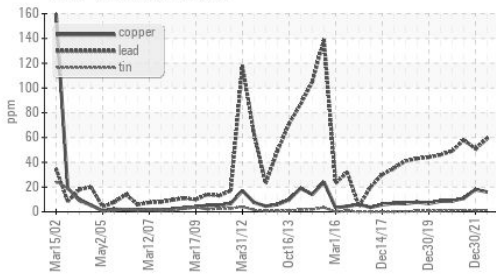
### CONTAMINANTS

	method	limit/base	current	history1	history2
Silicon	ppm	ASTM D5185(m) >12	<b>10</b>	9	12
Sodium	ppm	ASTM D5185(m)	<b>&lt;1</b>	0	0
Potassium	ppm	ASTM D5185(m) >20	<b>&lt;1</b>	<1	<1

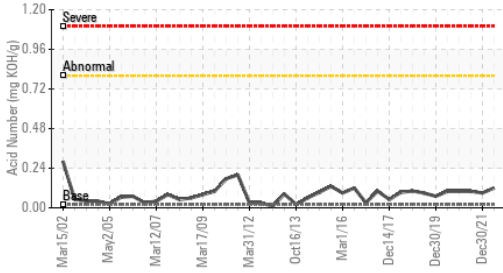
### FLUID DEGRADATION

	method	limit/base	current	history1	history2
Acid Number (AN)	mg KOH/g	ASTM D974* 0.02	<b>0.12</b>	0.09	0.10

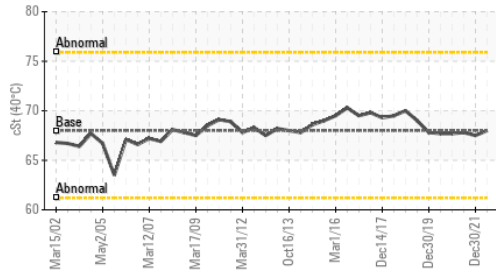
### Non-ferrous Metals



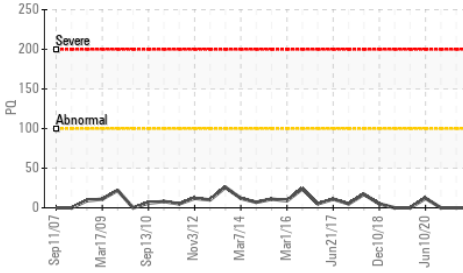
### Acid Number



### Viscosity @ 40°C



### PQ

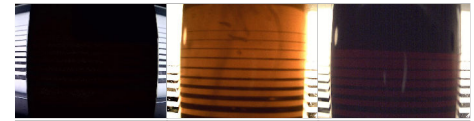


VISUAL	method	limit/base	current	history1	history2
White Metal	scalar	Visual*	NONE	NONE	NONE
Yellow Metal	scalar	Visual*	▲ LIGHT	▲ LIGHT	▲ LIGHT
Precipitate	scalar	Visual*	NONE	NONE	NONE
Silt	scalar	Visual*	NONE	VLITE	NONE
Debris	scalar	Visual*	NONE	NONE	NONE
Sand/Dirt	scalar	Visual*	NONE	NONE	NONE
Appearance	scalar	Visual*	NORML	NORML	NORML
Odor	scalar	Visual*	NORML	NORML	NORML
Emulsified Water	scalar	Visual*	>2	NEG	NEG
Free Water	scalar	Visual*	NEG	NEG	NEG

FLUID PROPERTIES	method	limit/base	current	history1	history2
Visc @ 40°C	cSt	ASTM D7279(m)	68	67.5	67.8

SAMPLE IMAGES	method	limit/base	current	history1	history2
---------------	--------	------------	---------	----------	----------

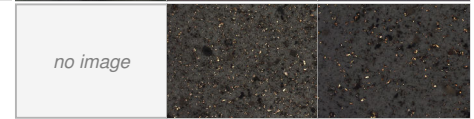
### Color



### Bottom

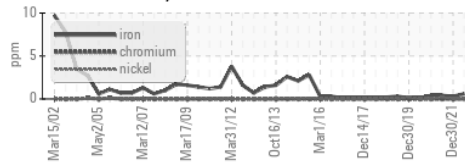


### PrtFilter

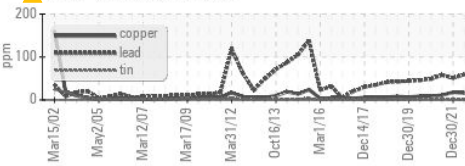


### GRAPHS

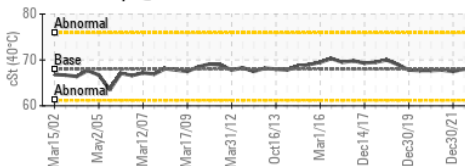
#### Ferrous Alloys



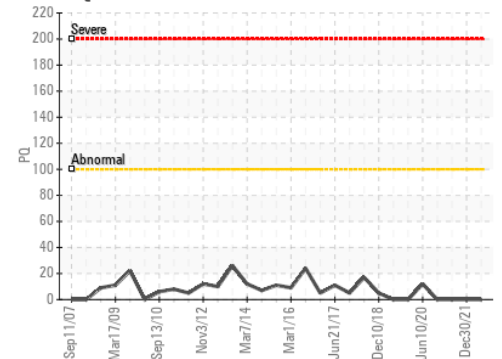
#### Non-ferrous Metals



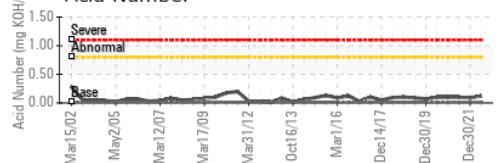
#### Viscosity @ 40°C



#### PQ



#### Acid Number



**Laboratory** : WearCheck - C8-1175 Appleby Line, Burlington, ON L7L 5H9  
**Sample No.** : WC0445170 **Received** : 20 Oct 2022  
**Lab Number** : 02517635 **Diagnosed** : 24 Oct 2022  
**Unique Number** : 5474615 **Diagnostician** : Kevin Marson  
**Test Package** : IND 2 ( Additional Tests: TAN Man )

To discuss this sample report, contact Customer Service at 1-800-268-2131.  
 Test denoted (\*) outside scope of accreditation, (m) method modified, (e) tested at external lab.  
 Validity of results and interpretation are based on the sample and information as supplied.

**NEWFOUNDLAND POWER INC.**  
 50 DUFFY PLACE, PO BOX 8910  
 ST. JOHNS, NL  
 CA A1B 3P6  
 Contact: Paul Martin  
 pmartin@newfoundlandpower.com  
 T:  
 F: (709)737-2926