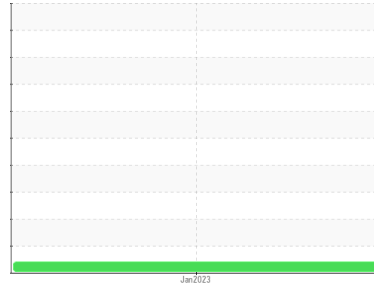




# OIL ANALYSIS REPORT

Sample Rating Trend



**INSOLUBLES**



Machine Id  
**TOYOTA GT5**  
 Component  
**Unknown Component**  
 Fluid  
**MOBIL DTE 732 (--- GAL)**

## DIAGNOSIS

### ▲ Recommendation

This is a baseline read-out on the submitted sample.

### Wear

{not applicable}

### ▲ Contamination

{not applicable}

### Fluid Condition

{not applicable}

## SAMPLE INFORMATION

	method	limit/base	current	history1	history2
Sample Number	Client Info		<b>PP0000022</b>	---	---
Sample Date	Client Info		<b>31 Jan 2023</b>	---	---
Machine Age	hrs	Client Info	<b>0</b>	---	---
Oil Age	hrs	Client Info	<b>0</b>	---	---
Oil Changed	Client Info		<b>N/A</b>	---	---
Sample Status			<b>MARGINAL</b>	---	---

## CONTAMINATION

	method	limit/base	current	history1	history2
Water	WC Method		<b>NEG</b>	---	---

## WEAR METALS

	method	limit/base	current	history1	history2
PQ	ASTM D8184*		<b>0</b>	---	---
Iron	ppm	ASTM D5185(m)	<b>0</b>	---	---
Chromium	ppm	ASTM D5185(m)	<b>0</b>	---	---
Nickel	ppm	ASTM D5185(m)	<b>&lt;1</b>	---	---
Titanium	ppm	ASTM D5185(m)	<b>0</b>	---	---
Silver	ppm	ASTM D5185(m)	<b>0</b>	---	---
Aluminum	ppm	ASTM D5185(m)	<b>0</b>	---	---
Lead	ppm	ASTM D5185(m)	<b>0</b>	---	---
Copper	ppm	ASTM D5185(m)	<b>0</b>	---	---
Tin	ppm	ASTM D5185(m)	<b>0</b>	---	---
Antimony	ppm	ASTM D5185(m)	<b>0</b>	---	---
Vanadium	ppm	ASTM D5185(m)	<b>0</b>	---	---
Beryllium	ppm	ASTM D5185(m)	<b>0</b>	---	---
Cadmium	ppm	ASTM D5185(m)	<b>0</b>	---	---

## ADDITIVES

	method	limit/base	current	history1	history2
Boron	ppm	ASTM D5185(m)	<b>&lt;1</b>	---	---
Barium	ppm	ASTM D5185(m)	<b>0</b>	---	---
Molybdenum	ppm	ASTM D5185(m)	<b>0</b>	---	---
Manganese	ppm	ASTM D5185(m)	<b>0</b>	---	---
Magnesium	ppm	ASTM D5185(m)	<b>0</b>	---	---
Calcium	ppm	ASTM D5185(m)	<b>0</b>	---	---
Phosphorus	ppm	ASTM D5185(m)	<b>&lt;1</b>	---	---
Zinc	ppm	ASTM D5185(m)	<b>2</b>	---	---
Sulfur	ppm	ASTM D5185(m)	<b>12</b>	---	---
Lithium	ppm	ASTM D5185(m)	<b>&lt;1</b>	---	---

## CONTAMINANTS

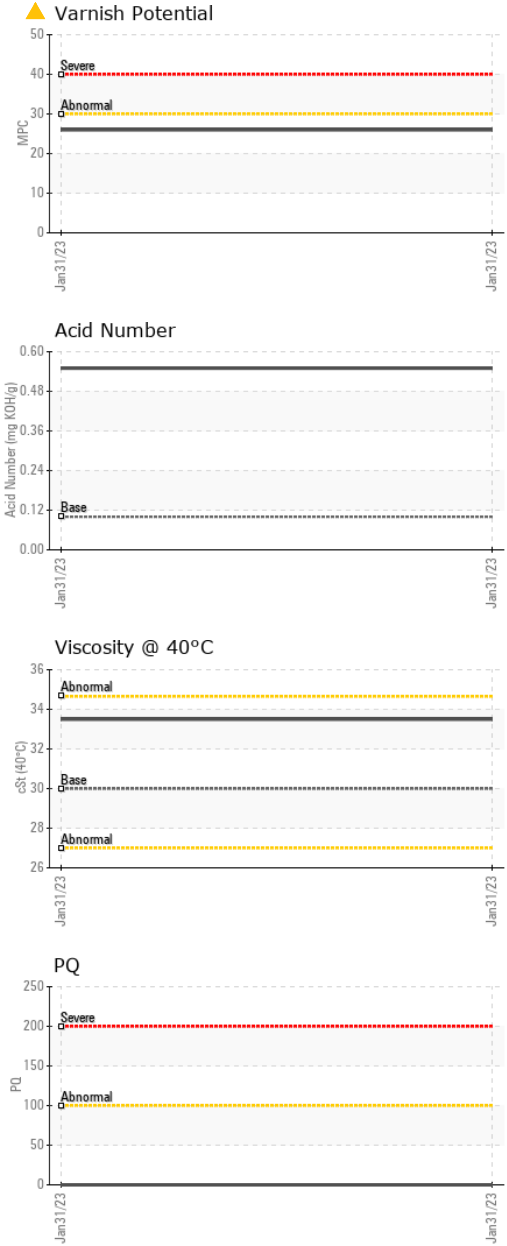
	method	limit/base	current	history1	history2
Silicon	ppm	ASTM D5185(m)	<b>0</b>	---	---
Sodium	ppm	ASTM D5185(m)	<b>&lt;1</b>	---	---
Potassium	ppm	ASTM D5185(m) >20	<b>0</b>	---	---

## FLUID DEGRADATION

	method	limit/base	current	history1	history2
Acid Number (AN)	mg KOH/g	ASTM D974* 0.10	<b>0.55</b>	---	---
MPC Varnish Potential	Scale	ASTM D7843(m)* >15	<b>▲ 26</b>	---	---



# OIL ANALYSIS REPORT



VISUAL	method	limit/base	current	history1	history2	
White Metal	scalar	Visual*	NONE	NONE	---	---
Yellow Metal	scalar	Visual*	NONE	NONE	---	---
Precipitate	scalar	Visual*	NONE	NONE	---	---
Silt	scalar	Visual*	NONE	NONE	---	---
Debris	scalar	Visual*	NONE	NONE	---	---
Sand/Dirt	scalar	Visual*	NONE	NONE	---	---
Appearance	scalar	Visual*	NORML	NORML	---	---
Odor	scalar	Visual*	NORML	NORML	---	---
Emulsified Water	scalar	Visual*	NEG	---	---	
Free Water	scalar	Visual*	NEG	---	---	

FLUID PROPERTIES	method	limit/base	current	history1	history2	
Visc @ 40°C	cSt	ASTM D7279(m)	30.0	<b>33.5</b>	---	---

SAMPLE IMAGES	method	limit/base	current	history1	history2
---------------	--------	------------	---------	----------	----------

Color				no image	no image
Bottom				no image	no image
MPC				no image	no image

## GRAPHS



**Laboratory** : WearCheck - C8-1175 Appleby Line, Burlington, ON L7L 5H9 **CANADIAN CHEMICAL CLEANING**  
**Sample No.** : PP0000022 **Recieved** : 01 Feb 2023 1099 HWY #6, R.R. #2  
**Lab Number** : **02536910** **Diagnosed** : 03 Feb 2023 HAMILTON, ON  
**Unique Number** : 5525910 **Diagnostician** : Kevin Marson CA L8N 2Z7  
**Test Package** : TEST ( Additional Tests: ICP, KV40, MPC, PQ, Spat, TAN Auto, TAN Man ) **Contact:** Len MacDonald  
 len.macdonald@reladyne.com

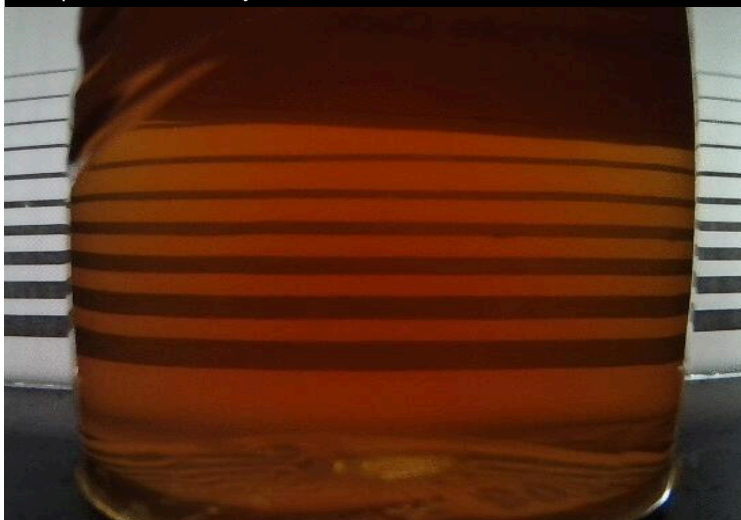
To discuss this sample report, contact Customer Service at 1-800-268-2131.  
 Test denoted (\*) outside scope of accreditation, (m) method modified, (e) tested at external lab.  
 Validity of results and interpretation are based on the sample and information as supplied.

T: (905)689-2266  
 F: (905)689-2998

MPC (Varnish Test)



Sample Color & Clarity



*This page left intentionally blank*