



# FUEL REPORT

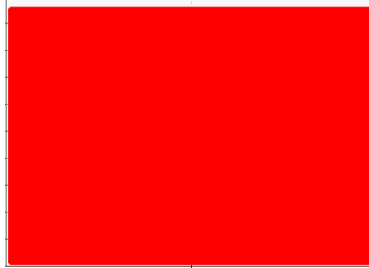
Sample Rating Trend

ISO



Area  
**HEAD TANK SOOKE**  
Machine Id  
**6019023 - GENSET FUEL TANK**

Component  
**Diesel Fuel**  
Fluid  
**No.2 DIESEL FUEL (ULTRALOW SULPHUR) (--- LTR)**



## DIAGNOSIS

### Recommendation

We advise that you check all areas where contaminants can enter the system. We advise that you filter this fluid before use. We advise that you follow the water drain-off procedure for this component. We advise that you perform a filter service, and use off-line filtration to improve the cleanliness of the system fluid. The air breather requires service. If unrated, we recommend that you replace with a suitable micron rated and/or desiccant air breather. If rated, we recommend that you service/replace the breather. Resample in 30-45 days to monitor this situation.

### Corrosion

(not applicable)

### Contaminants

Particles >14µm are severely high. Particles >6µm are severely high. Oil Cleanliness are severely high. Particles >4µm are severely high. Particles >4µm are severely high... Particles >21µm are abnormally high. Excessive free water present. There is no bacteria or fungus (yeast and/or mold) present in the sample.

### Fuel Condition

The fuel is still serviceable provided that the contaminant(s) can be reduced to acceptable levels.

SAMPLE INFORMATION		method	limit/base	current	history1	history2
Sample Number	Client Info			<b>WC0738277</b>	---	---
Sample Date	Client Info			<b>01 Feb 2023</b>	---	---
Machine Age	hrs	Client Info		<b>0</b>	---	---
Sample Status				<b>SEVERE</b>	---	---

PHYSICAL PROPERTIES		method	limit/base	current	history1	history2
Specific Gravity		ASTM D1298*	0.839	<b>0.861</b>	---	---
Fuel Color	text	Visual Screen*	Yellow	<b>Pink</b>	---	---
Visc @ 40°C	cSt	ASTM D7279(m)	3.0	<b>3.3</b>	---	---
Pensky-Martens Flash Point	°C	ASTM D7215*	52	<b>67.1</b>	---	---

SULFUR CONTENT		method	limit/base	current	history1	history2
Sulfur	ppm	ASTM D5185(m)	10	<b>7</b>	---	---

DISTILLATION		method	limit/base	current	history1	history2
Initial Boiling Point	°C	ASTM D2887*	165	<b>179</b>	---	---
5% Distillation Point	°C	ASTM D2887*		<b>214</b>	---	---
10% Distill Point	°C	ASTM D2887*	201	<b>227</b>	---	---
15% Distillation Point	°C	ASTM D2887*		<b>236</b>	---	---
20% Distill Point	°C	ASTM D2887*	216	<b>246</b>	---	---
30% Distill Point	°C	ASTM D2887*	230	<b>261</b>	---	---
40% Distill Point	°C	ASTM D2887*	243	<b>274</b>	---	---
50% Distill Point	°C	ASTM D2887*	255	<b>286</b>	---	---
60% Distill Point	°C	ASTM D2887*	267	<b>299</b>	---	---
70% Distill Point	°C	ASTM D2887*	280	<b>313</b>	---	---
80% Distill Point	°C	ASTM D2887*	295	<b>325</b>	---	---
85% Distillation Point	°C	ASTM D2887*		<b>335</b>	---	---
90% Distill Point	°C	ASTM D2887*	310	<b>345</b>	---	---
95% Distillation Point	°C	ASTM D2887*		<b>361</b>	---	---
Final Boiling Point	°C	ASTM D2887*	341	<b>381</b>	---	---

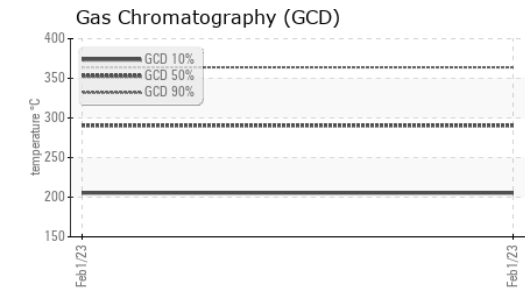
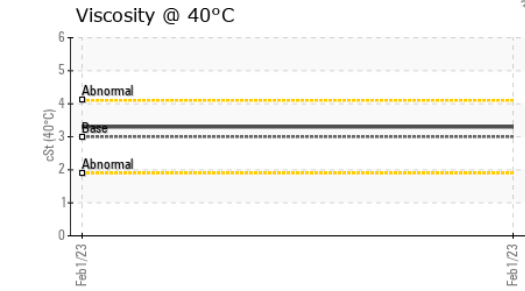
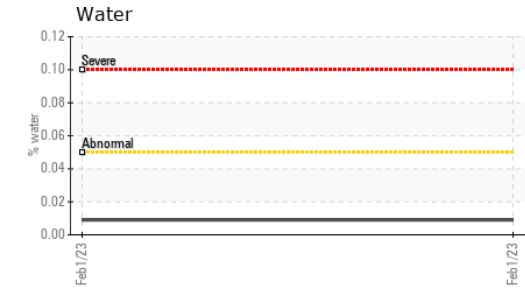
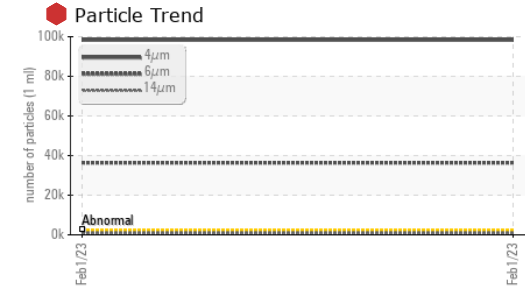
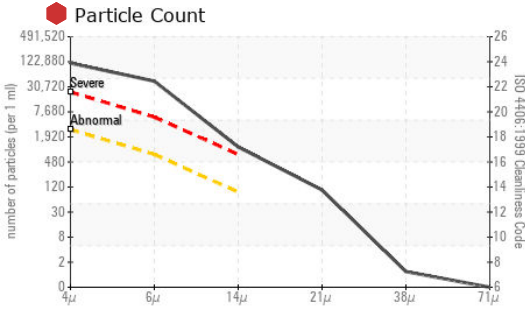
IGNITION QUALITY		method	limit/base	current	history1	history2
API Gravity		ASTM D1298*	37.7	<b>32</b>	---	---
Cetane Index		ASTM D4737*	<40.0	<b>46</b>	---	---

CONTAMINANTS		method	limit/base	current	history1	history2
Silicon	ppm	ASTM D5185(m)	<1.0	<b>0</b>	---	---
Sodium	ppm	ASTM D5185(m)	<0.1	<b>0</b>	---	---
Potassium	ppm	ASTM D5185(m)	<0.1	<b>0</b>	---	---
Water	%	ASTM D6304*	<0.05	<b>0.009</b>	---	---
ppm Water	ppm	ASTM D6304*	<500	<b>98.1</b>	---	---

FLUID CLEANLINESS		method	limit/base	current	history1	history2
Particles >4µm		ASTM D7647	>2500	<b>98323</b>	---	---
Particles >6µm		ASTM D7647	>640	<b>36352</b>	---	---
Particles >14µm		ASTM D7647	>80	<b>967</b>	---	---
Particles >21µm		ASTM D7647	>20	<b>90</b>	---	---
Particles >38µm		ASTM D7647	>4	<b>1</b>	---	---
Particles >71µm		ASTM D7647	>3	<b>0</b>	---	---
Oil Cleanliness		ISO 4406 (c)	>18/16/13	<b>24/22/17</b>	---	---



# FUEL REPORT

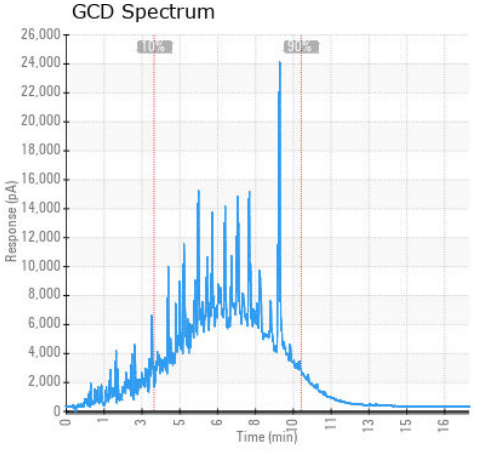
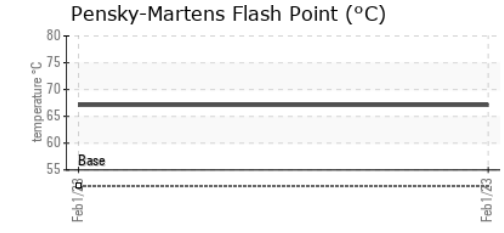
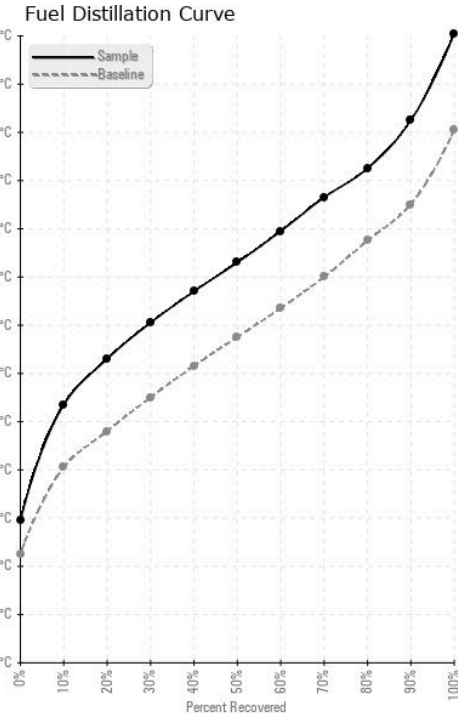


MICROBIAL	method	limit/base	current	history1	history2
Bacteria	CFU/ml ASTM D6469*	>=100000	<b>0</b>	---	---
Yeast	CFU/ml ASTM D6469*	>=100000	<b>0</b>	---	---
Mold	Colonies ASTM D6469*	MODER	<b>NONE</b>	---	---

HEAVY METALS	method	limit/base	current	history1	history2
Aluminum	ppm ASTM D5185(m)	<0.1	<b>0</b>	---	---
Nickel	ppm ASTM D5185(m)	<0.1	<b>0</b>	---	---
Lead	ppm ASTM D5185(m)	<0.1	<b>0</b>	---	---
Vanadium	ppm ASTM D5185(m)	<0.1	<b>0</b>	---	---
Iron	ppm ASTM D5185(m)	<0.1	<b>&lt;1</b>	---	---
Calcium	ppm ASTM D5185(m)	<0.1	<b>&lt;1</b>	---	---
Magnesium	ppm ASTM D5185(m)	<0.1	<b>0</b>	---	---
Phosphorus	ppm ASTM D5185(m)	<0.1	<b>0</b>	---	---
Zinc	ppm ASTM D5185(m)	<0.1	<b>&lt;1</b>	---	---

SAMPLE IMAGES	method	limit/base	current	history1	history2
Color				no image	no image
Bottom				no image	no image

## GRAPHS



**Laboratory** : WearCheck - C8-1175 Appleby Line, Burlington, ON L7L 5H9  
**Sample No.** : WC0738277  
**Lab Number** : 02538028  
**Unique Number** : 5527028  
**Test Package** : FUEL ( Additional Tests: Bacteria, Bottom, CC Flash, GC-PercFuel, PrtCount )

**CRD, Integrated Water Services**  
 337 Victoria View Road  
 Victoria, BC  
 CA V9A 3Z3  
 Contact: Shawn McIntyre  
 smcintyre@crd.bc.ca  
 T: (250)217-1310  
 F:

To discuss this sample report, contact Customer Service at 1-800-268-2131.  
 Test denoted (\*) outside scope of accreditation, (m) method modified, (e) tested at external lab.  
 Validity of results and interpretation are based on the sample and information as supplied.