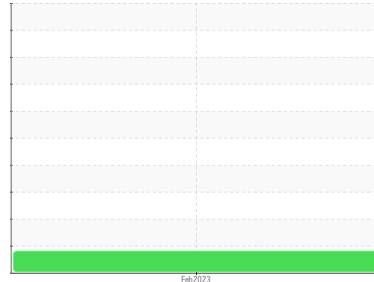




FUEL REPORT

Sample Rating Trend

OFF SPEC



Area
[517755]
 Machine Id
UL9400100

Component
Diesel Fuel
 Fluid
No.1 DIESEL FUEL (ULTRALOW SULPHUR) (--- GAL)

DIAGNOSIS

Recommendation

We recommend that you drain the fuel from the component if this has not already been done. We recommend an early resample to monitor this condition.

Corrosion

{not applicable}

Contaminants

The system cleanliness is acceptable for your target ISO 4406 cleanliness code. The water content is negligible.

Fuel Condition

90% Distill Point results are abnormally high. Final Boiling Point results are abnormally high. All laboratory tests indicate that this sample meets specifications for No.2 ultra-low-sulfur diesel fuel (US EPA/CGSB-3.517-3 type B).

SAMPLE INFORMATION		method	limit/base	current	history1	history2
Sample Number	Client Info			KT0000407	---	---
Sample Date	Client Info			10 Feb 2023	---	---
Machine Age	hrs	Client Info		0	---	---
Sample Status				ABNORMAL	---	---

PHYSICAL PROPERTIES		method	limit/base	current	history1	history2
Specific Gravity		ASTM D1298*	0.825	0.826	---	---
Fuel Color	text	Visual Screen*	Clear	Yellow	---	---
Visc @ 40°C	cSt	ASTM D7279(m)	1.8	2	---	---
Pensky-Martens Flash Point	°C	ASTM D7215*	38	47	---	---

SULFUR CONTENT		method	limit/base	current	history1	history2
Sulfur	ppm	ASTM D5185(m)	10	10	---	---

DISTILLATION		method	limit/base	current	history1	history2
Initial Boiling Point	°C	ASTM D2887*	159	154	---	---
5% Distillation Point	°C	ASTM D2887*		173	---	---
10% Distill Point	°C	ASTM D2887*	184	181	---	---
15% Distillation Point	°C	ASTM D2887*		189	---	---
20% Distill Point	°C	ASTM D2887*	196	196	---	---
30% Distill Point	°C	ASTM D2887*	205	210	---	---
40% Distill Point	°C	ASTM D2887*	216	224	---	---
50% Distill Point	°C	ASTM D2887*	227	238	---	---
60% Distill Point	°C	ASTM D2887*	238	254	---	---
70% Distill Point	°C	ASTM D2887*	251	270	---	---
80% Distill Point	°C	ASTM D2887*	264	288	---	---
85% Distillation Point	°C	ASTM D2887*		301	---	---
90% Distill Point	°C	ASTM D2887*	288	314	---	---
95% Distillation Point	°C	ASTM D2887*		335	---	---
Final Boiling Point	°C	ASTM D2887*	309	358	---	---

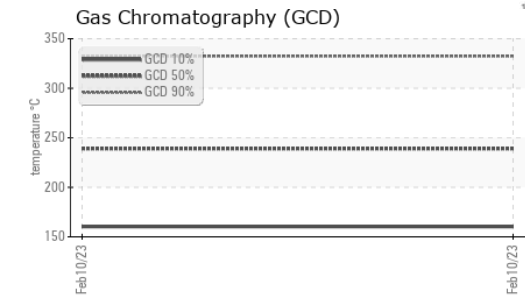
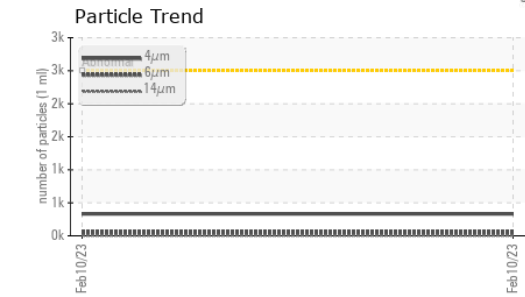
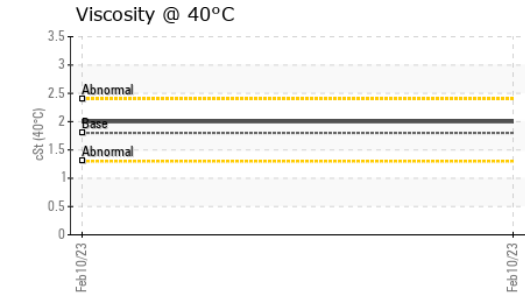
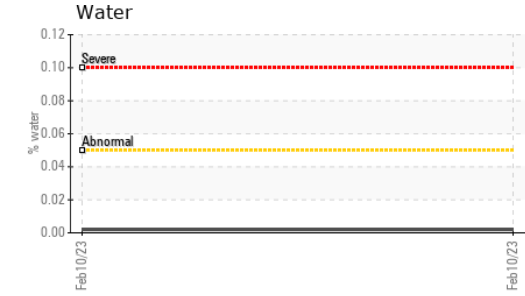
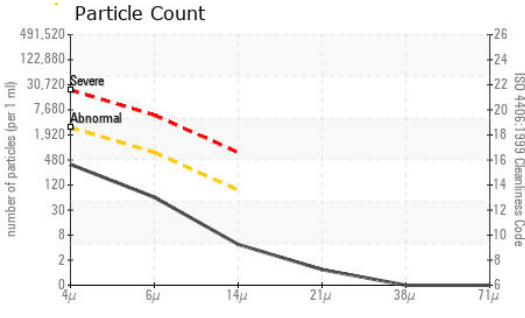
IGNITION QUALITY		method	limit/base	current	history1	history2
API Gravity		ASTM D1298*	40.1	39	---	---
Cetane Index		ASTM D4737*	<40.0	48	---	---

CONTAMINANTS		method	limit/base	current	history1	history2
Silicon	ppm	ASTM D5185(m)	<1.0	0	---	---
Sodium	ppm	ASTM D5185(m)	<0.1	<1	---	---
Potassium	ppm	ASTM D5185(m)	<0.1	0	---	---
Water	%	ASTM D6304*	<0.05	0.002	---	---
ppm Water	ppm	ASTM D6304*	<500	24.0	---	---

FLUID CLEANLINESS		method	limit/base	current	history1	history2
Particles >4µm		ASTM D7647	>2500	331	---	---
Particles >6µm		ASTM D7647	>640	54	---	---
Particles >14µm		ASTM D7647	>80	4	---	---
Particles >21µm		ASTM D7647	>20	1	---	---
Particles >38µm		ASTM D7647	>4	0	---	---
Particles >71µm		ASTM D7647	>3	0	---	---
Oil Cleanliness		ISO 4406 (c)	>18/16/13	16/13/9	---	---



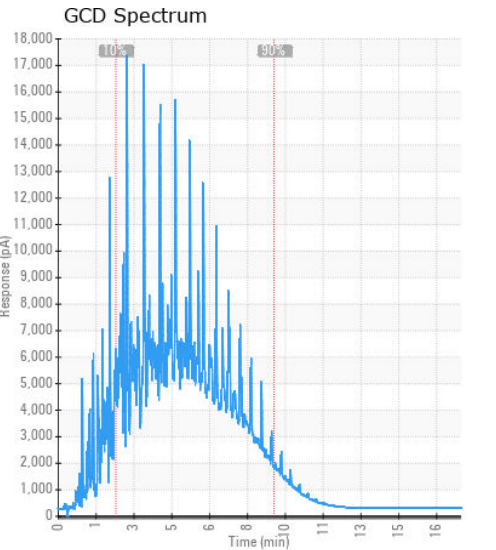
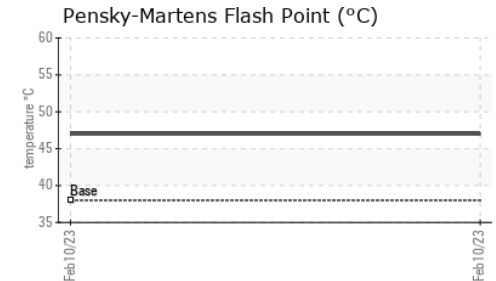
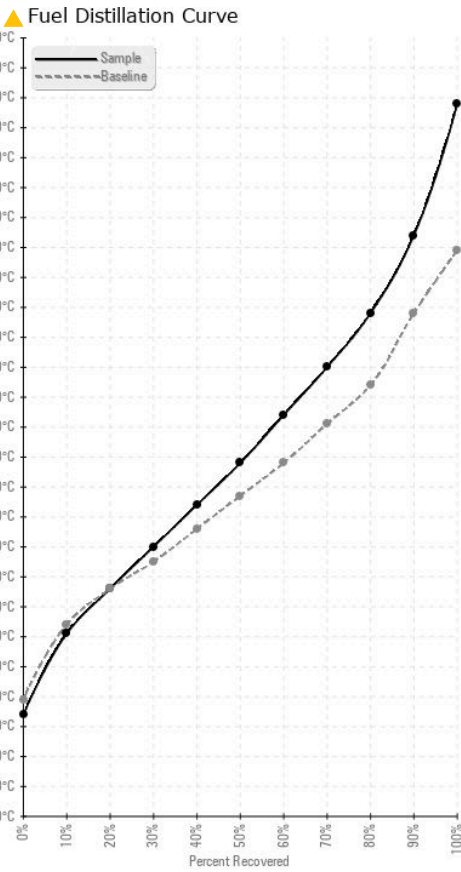
FUEL REPORT



HEAVY METALS	method	limit/base	current	history1	history2	
Aluminum	ppm	ASTM D5185(m)	<0.1	0	---	---
Nickel	ppm	ASTM D5185(m)	<0.1	0	---	---
Lead	ppm	ASTM D5185(m)	<0.1	0	---	---
Vanadium	ppm	ASTM D5185(m)	<0.1	0	---	---
Iron	ppm	ASTM D5185(m)	<0.1	<1	---	---
Calcium	ppm	ASTM D5185(m)	<0.1	<1	---	---
Magnesium	ppm	ASTM D5185(m)	<0.1	0	---	---
Phosphorus	ppm	ASTM D5185(m)	<0.1	<1	---	---
Zinc	ppm	ASTM D5185(m)	<0.1	<1	---	---

SAMPLE IMAGES	method	limit/base	current	history1	history2
Color				no image	no image
Bottom				no image	no image

GRAPHS



Laboratory : WearCheck - C8-1175 Appleby Line, Burlington, ON L7L 5H9
Sample No. : KT0000407 **Received** : 08 Mar 2023
Lab Number : 02543959 **Diagnosed** : 16 Mar 2023
Unique Number : 5540964 **Diagnostician** : Kevin Marson
Test Package : FUEL (Additional Tests: CC Flash, GC-PercFuel, PrtCount)

Distibution Payeur Inc
 5379 RTE 112
 Ascot Corner, QC
 CA J0B 1A0
 Contact: David
 david@payeur.com

To discuss this sample report, contact Customer Service at 1-800-268-2131.
 Test denoted (*) outside scope of accreditation, (m) method modified, (e) tested at external lab.
 Validity of results and interpretation are based on the sample and information as supplied.