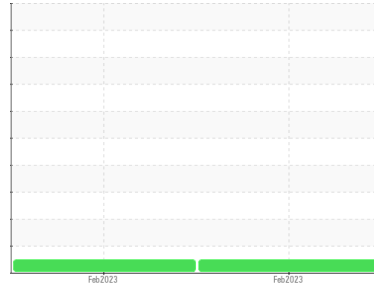




FILTER DEBRIS ANALYSIS

Sample Rating Trend

NORMAL



Area
(C-GZVJ)
 Machine Id
[C-GZVJ] BEEHCRAFT 1900D PCE-PS0639
 Component
Right Filter
 Fluid
BP TURBO OIL 2380 (14 LTR)

DIAGNOSIS

Recommendation

Resample at the next service interval to monitor.

Wear Particles

The filter contained no appreciable wear particles. All filter wear levels are normal.

Contaminants

The filter contained only normal levels of contaminants, and debris. All filter contaminant levels are normal.

SAMPLE INFORMATION		method	limit/base	current	history1	history2
Sample Number	Client Info			WC0759271	WC0759272	---
Sample Date	Client Info			14 Feb 2023	08 Feb 2023	---
Machine Age	hrs	Client Info		8071	8050	---
Oil Age	hrs	Client Info		8071	8050	---
Oil Changed	Client Info			Not Chngd	Not Chngd	---
Sample Status				NORMAL	NORMAL	---

CONTAMINATION		method	limit/base	current	history1	history2
Water	WC Method			NEG	NEG	---

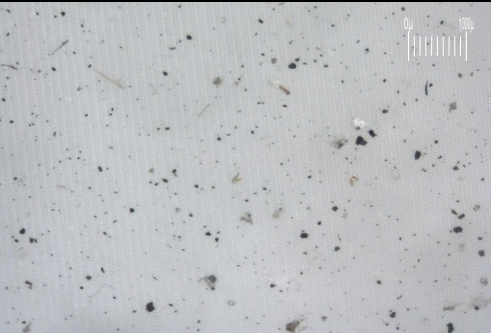
FILTER WEAR PARTICLES		method	limit/base	current	history1	history2
Ferrous Rubbing	Scale 0-10	ASTM D7684*		1	1	
Ferrous Sliding	Scale 0-10	ASTM D7684*				
Ferrous Cutting	Scale 0-10	ASTM D7684*				
Ferrous Rolling	Scale 0-10	ASTM D7684*			1	
Ferrous Break-in	Scale 0-10	ASTM D7684*				
Ferrous Spheres	Scale 0-10	ASTM D7684*				
Ferrous Black Oxides	Scale 0-10	ASTM D7684*				
Ferrous Red Oxides	Scale 0-10	ASTM D7684*				
Ferrous Corrosive	Scale 0-10	ASTM D7684*				
Ferrous Other	Scale 0-10	ASTM D7684*				
Nonferrous Rubbing	Scale 0-10	ASTM D7684*				
Nonferrous Sliding	Scale 0-10	ASTM D7684*				
Nonferrous Cutting	Scale 0-10	ASTM D7684*				
Nonferrous Rolling	Scale 0-10	ASTM D7684*				
Nonferrous Other	Scale 0-10	ASTM D7684*				

FILTER CONTAMINANTS		method	limit/base	current	history1	history2
Sand/Dirt	Scale 0-10	ASTM D7684*				
Fibres	Scale 0-10	ASTM D7684*				
Spheres	Scale 0-10	ASTM D7684*				
Other	Scale 0-10	ASTM D7684*		1	1	
Patch Weight	mg	ASTM D7684*		N/A	N/A	---

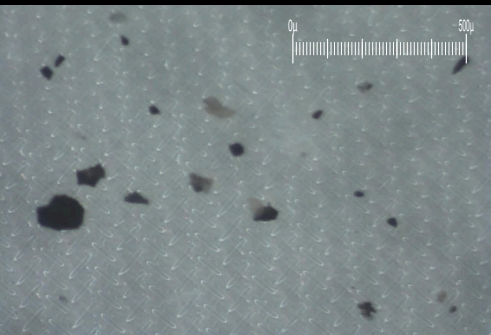
SAMPLE IMAGES		method	limit/base	current	history1	history2
Color					<i>no image</i>	<i>no image</i>
Bottom					<i>no image</i>	<i>no image</i>

Area
(C-GZVJ)
Machine Id
[C-GZVJ] BEEHCRAFT 1900D PCE-PS0639
Component
Right Filter
Fluid
BP TURBO OIL 2380 (14 LTR)

Magn: 10x Illum: RW



Magn: 60x Illum: RW



WEAR

The filter contained no appreciable wear particles. All filter wear levels are normal.