



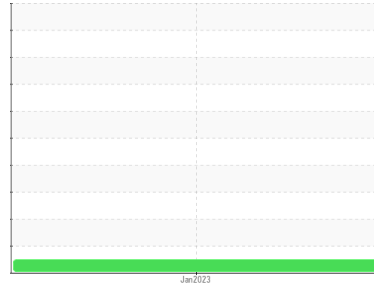
# FILTER DEBRIS ANALYSIS

Sample Rating Trend

**NORMAL**



Area  
**(C-FWAX)**  
 Machine Id  
**[C-FWAX] BEECHCRAFT 1900D PCE-PS0640**  
 Component  
**Left Filter**  
 Fluid  
**BP TURBO OIL 2380 (14 LTR)**



## DIAGNOSIS

### Recommendation

Resample at the next service interval to monitor.

### Wear Particles

The filter contained no appreciable wear particles. All filter wear levels are normal.

### Contaminants

The filter contained only normal levels of contaminants, and debris. All filter contaminant levels are normal.

## SAMPLE INFORMATION

method	limit/base	current	history1	history2
Sample Number	Client Info	<b>WC</b>	---	---
Sample Date	Client Info	<b>20 Jan 2023</b>	---	---
Machine Age	hrs Client Info	<b>4214</b>	---	---
Oil Age	hrs Client Info	<b>4214</b>	---	---
Oil Changed	Client Info	<b>Not Chngd</b>	---	---
Sample Status		<b>NORMAL</b>	---	---

## CONTAMINATION

method	limit/base	current	history1	history2
Water	WC Method	<b>NEG</b>	---	---

## FILTER WEAR PARTICLES

method	limit/base	current	history1	history2
Ferrous Rubbing	Scale 0-10 ASTM D7684*			
Ferrous Sliding	Scale 0-10 ASTM D7684*			
Ferrous Cutting	Scale 0-10 ASTM D7684*			
Ferrous Rolling	Scale 0-10 ASTM D7684*			
Ferrous Break-in	Scale 0-10 ASTM D7684*			
Ferrous Spheres	Scale 0-10 ASTM D7684*			
Ferrous Black Oxides	Scale 0-10 ASTM D7684*			
Ferrous Red Oxides	Scale 0-10 ASTM D7684*			
Ferrous Corrosive	Scale 0-10 ASTM D7684*			
Ferrous Other	Scale 0-10 ASTM D7684*			
Nonferrous Rubbing	Scale 0-10 ASTM D7684*			
Nonferrous Sliding	Scale 0-10 ASTM D7684*			
Nonferrous Cutting	Scale 0-10 ASTM D7684*			
Nonferrous Rolling	Scale 0-10 ASTM D7684*			
Nonferrous Other	Scale 0-10 ASTM D7684*	<b>1</b>		

## FILTER CONTAMINANTS

method	limit/base	current	history1	history2
Sand/Dirt	Scale 0-10 ASTM D7684*			
Fibres	Scale 0-10 ASTM D7684*	<b>1</b>		
Spheres	Scale 0-10 ASTM D7684*			
Other	Scale 0-10 ASTM D7684*	<b>1</b>		
Patch Weight	mg ASTM D7684*	<b>N/A</b>	---	---

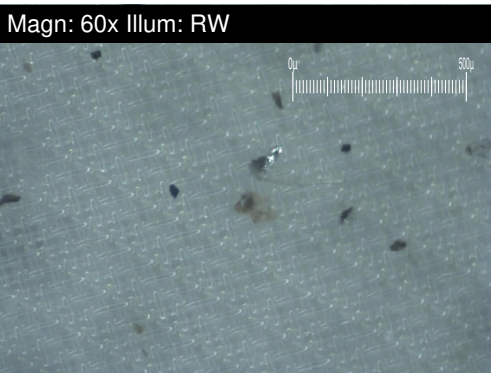
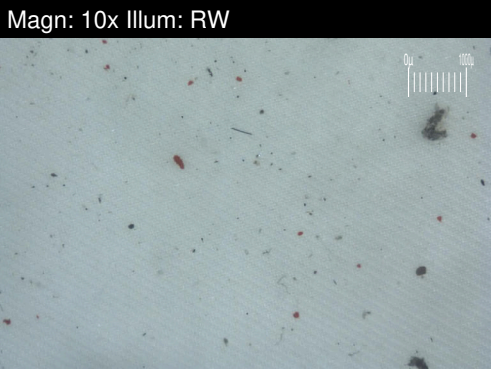
## SAMPLE IMAGES

method	limit/base	current	history1	history2
Color			<i>no image</i>	<i>no image</i>
Bottom			<i>no image</i>	<i>no image</i>



# FILTER REPORT

Area  
**(C-FWAX)**  
Machine Id  
**[C-FWAX] BEEHCRAFT 1900D PCE-PS0640**  
Component  
**Left Filter**  
Fluid  
**BP TURBO OIL 2380 (14 LTR)**



## WEAR

The filter contained no appreciable wear particles. All filter wear levels are normal.