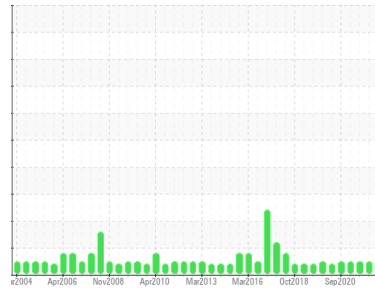




# OIL ANALYSIS REPORT

Sample Rating Trend



**NORMAL**



Area  
**[198761]**  
 Machine Id  
**WBK G GOV (S/N 24626)**  
 Component  
**Circulating Governor System**  
 Fluid  
**ESSO TERESSO ISO 68 (68 LTR)**

## DIAGNOSIS

### Recommendation

Resample at the next service interval to monitor.

### Wear

All component wear rates are normal.

### Contamination

The system cleanliness is acceptable for your target ISO 4406 cleanliness code. The system and fluid cleanliness is acceptable.

### Fluid Condition

The AN level is acceptable for this fluid. The condition of the oil is suitable for further service.

## SAMPLE INFORMATION

	method	limit/base	current	history1	history2
Sample Number	Client Info		<b>WC0328087</b>	WC0445260	WC0445256
Sample Date	Client Info		<b>20 Mar 2023</b>	03 Apr 2022	20 Oct 2021
Machine Age	mths	Client Info	<b>59</b>	0	0
Oil Age	mths	Client Info	<b>0</b>	0	0
Oil Changed	Client Info		<b>Not Changed</b>	Not Changed	Not Changed
Sample Status			<b>NORMAL</b>	NORMAL	NORMAL

## WEAR METALS

	method	limit/base	current	history1	history2
PQ	ASTM D8184*		<b>0</b>	0	0
Iron	ppm	ASTM D5185(m) >50	<b>&lt;1</b>	<1	<1
Chromium	ppm	ASTM D5185(m) >10	<b>0</b>	0	0
Nickel	ppm	ASTM D5185(m) >10	<b>&lt;1</b>	<1	<1
Titanium	ppm	ASTM D5185(m)	<b>0</b>	0	0
Silver	ppm	ASTM D5185(m)	<b>0</b>	0	0
Aluminum	ppm	ASTM D5185(m) >3	<b>&lt;1</b>	<1	0
Lead	ppm	ASTM D5185(m) >75	<b>6</b>	7	9
Copper	ppm	ASTM D5185(m) >15	<b>&lt;1</b>	<1	1
Tin	ppm	ASTM D5185(m) >55	<b>&lt;1</b>	<1	<1
Antimony	ppm	ASTM D5185(m) >5	<b>&lt;1</b>	0	0
Vanadium	ppm	ASTM D5185(m)	<b>0</b>	0	0
Beryllium	ppm	ASTM D5185(m)	<b>0</b>	0	0
Cadmium	ppm	ASTM D5185(m)	<b>0</b>	0	0

## ADDITIVES

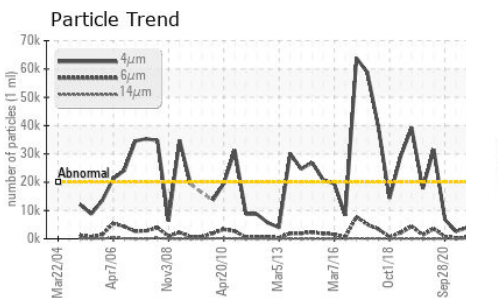
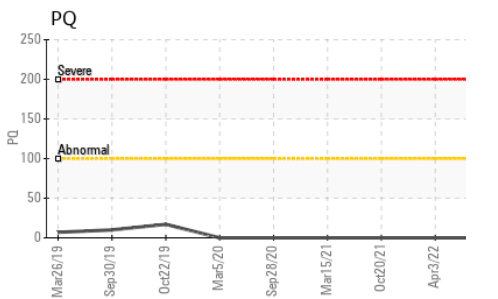
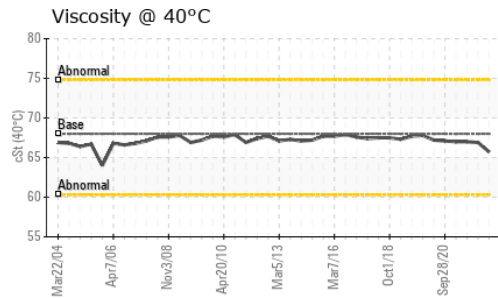
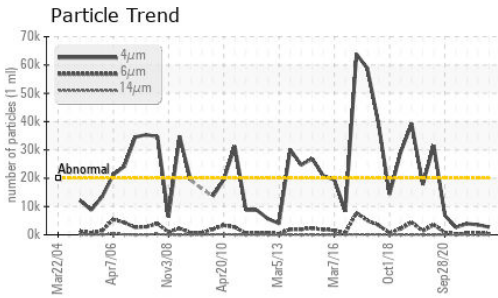
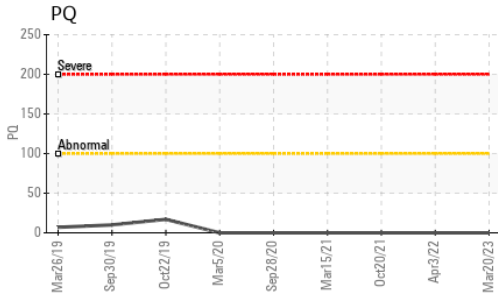
	method	limit/base	current	history1	history2
Boron	ppm	ASTM D5185(m) 4.5	<b>&lt;1</b>	<1	<1
Barium	ppm	ASTM D5185(m) 0.4	<b>0</b>	0	0
Molybdenum	ppm	ASTM D5185(m) 0	<b>0</b>	0	0
Manganese	ppm	ASTM D5185(m)	<b>0</b>	0	0
Magnesium	ppm	ASTM D5185(m) 0	<b>0</b>	0	<1
Calcium	ppm	ASTM D5185(m) 0	<b>0</b>	<1	<1
Phosphorus	ppm	ASTM D5185(m) 0.7	<b>88</b>	50	55
Zinc	ppm	ASTM D5185(m) 0	<b>23</b>	13	19
Sulfur	ppm	ASTM D5185(m) 1315	<b>2339</b>	2209	2268
Lithium	ppm	ASTM D5185(m)	<b>&lt;1</b>	<1	<1

## CONTAMINANTS

	method	limit/base	current	history1	history2
Silicon	ppm	ASTM D5185(m) >8	<b>&lt;1</b>	<1	<1
Sodium	ppm	ASTM D5185(m)	<b>&lt;1</b>	<1	<1
Potassium	ppm	ASTM D5185(m) >20	<b>0</b>	<1	<1

## FLUID CLEANLINESS

	method	limit/base	current	history1	history2
Particles >4µm	ASTM D7647	>20000	<b>2716</b>	3528	3944
Particles >6µm	ASTM D7647	>5000	<b>396</b>	504	434
Particles >14µm	ASTM D7647	>640	<b>14</b>	23	17
Particles >21µm	ASTM D7647	>160	<b>3</b>	4	4
Particles >38µm	ASTM D7647	>40	<b>0</b>	0	0
Particles >71µm	ASTM D7647	>10	<b>0</b>	0	0
Oil Cleanliness	ISO 4406 (c)	>21/19/16	<b>19/16/11</b>	19/16/12	19/16/11



FLUID DEGRADATION		method	limit/base	current	history1	history2
Acid Number (AN)	mg KOH/g	ASTM D974*	0.02	<b>0.08</b>	0.09	0.09

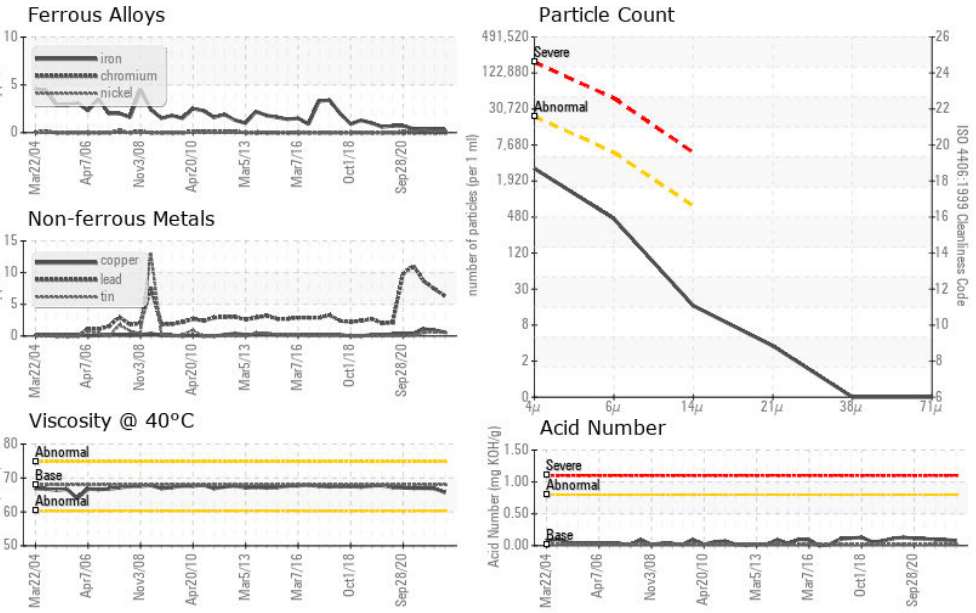
VISUAL		method	limit/base	current	history1	history2
White Metal	scalar	Visual*	NONE	<b>NONE</b>	NONE	NONE
Yellow Metal	scalar	Visual*	NONE	<b>NONE</b>	NONE	NONE
Precipitate	scalar	Visual*	NONE	<b>NONE</b>	NONE	NONE
Silt	scalar	Visual*	NONE	<b>NONE</b>	NONE	NONE
Debris	scalar	Visual*	NONE	<b>NONE</b>	NONE	NONE
Sand/Dirt	scalar	Visual*	NONE	<b>NONE</b>	NONE	NONE
Appearance	scalar	Visual*	NORML	<b>NORML</b>	NORML	NORML
Odor	scalar	Visual*	NORML	<b>NORML</b>	NORML	NORML
Emulsified Water	scalar	Visual*	>0.1	<b>NEG</b>	NEG	NEG
Free Water	scalar	Visual*		<b>NEG</b>	NEG	NEG

FLUID PROPERTIES		method	limit/base	current	history1	history2
Visc @ 40°C	cSt	ASTM D7279(m)	68	<b>65.7</b>	66.9	67.0

### SAMPLE IMAGES



### GRAPHS



**Laboratory** : WearCheck - C8-1175 Appleby Line, Burlington, ON L7L 5H9  
**Sample No.** : WC0328087  
**Lab Number** : 02554157  
**Unique Number** : 5567172  
**Test Package** : IND 2 ( Additional Tests: PrtCount, TAN Man )

**NEWFOUNDLAND POWER INC.**  
 50 DUFFY PLACE, PO BOX 8910  
 ST. JOHNS, NL  
 CA A1B 3P6  
 Contact: Paul Martin  
 pmartin@newfoundlandpower.com  
 T:  
 F: (709)737-2926

To discuss this sample report, contact Customer Service at 1-800-268-2131.  
 Test denoted (\*) outside scope of accreditation, (m) method modified, (e) tested at external lab.  
 Validity of results and interpretation are based on the sample and information as supplied.