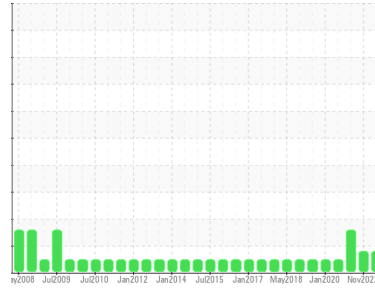




PROBLEM SUMMARY

Sample Rating Trend



ISO



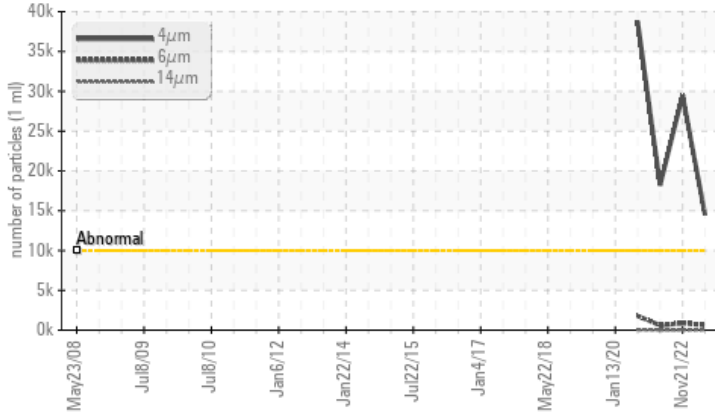
Machine Id
PHR-G1-THBR

Component
Thrust Bearing

Fluid
MOBIL DTE OIL HVY MEDIUM (11 LTR)

COMPONENT CONDITION SUMMARY

▲ Particle Trend



RECOMMENDATION

We recommend you service the filters on this component. Resample at the next service interval to monitor.

PROBLEMATIC TEST RESULTS

Sample Status			ATTENTION	ABNORMAL	ATTENTION
Particles >4µm	ASTM D7647	>10000	▲ 14510	▲ 29508	▲ 18231
Oil Cleanliness	ISO 4406 (c)	>20/18/14	▲ 21/16/12	▲ 22/17/12	▲ 21/16/11
PrtFilter					

Customer Id: NEWSTJ
Sample No.: WC0455673
Lab Number: 02554194
Test Package: IND 2



To manage this report scan the QR code

To discuss the diagnosis or test data:
Bill Quesnel CLS,OMA II,MLA-III,LLA-I +1
(289)291-4641 x4641
Bill.Quesnel@wearcheck.com

To change component or sample information:
Gloria Gonzalez +1 (289)291-4643 x4643
gloria.gonzalez@wearcheck.com

RECOMMENDED ACTIONS

Action	Status	Date	Done By	Description
Change Filter	MISSED	Sep 28 2023	?	We recommend you service the filters on this component.

HISTORICAL DIAGNOSIS

21 Nov 2022 Diag: Kevin Marson

ISO



We recommend you service the filters on this component. We recommend an early resample to monitor this condition. All component wear rates are normal. Particles >4µm and oil cleanliness are abnormally high. The AN level is acceptable for this fluid. The oil is still serviceable provided that the contaminant(s) can be reduced to acceptable levels.

view report



24 Nov 2020 Diag: Kevin Marson

VISUAL METAL



We recommend you service the filters on this component. Confirm the source of the lubricant being utilized for top-up/fill. We recommend an early resample to monitor this condition. The fluid was specified as MOBIL DTE OIL HVY MEDIUM, however, a fluid match indicates that this fluid is ISO 68 R&O Hydraulic Oil. Please confirm the oil type and grade on your next sample. Light concentration of visible metal present. There is a light amount of silt (particulates < 14 microns in size) present in the oil. Additive levels indicate the addition of a different brand, or type of oil. The AN level is acceptable for this fluid. The condition of the oil is suitable for further service.

view report



17 Jul 2020 Diag: Kevin Marson

NORMAL



Resample at the next service interval to monitor. All component wear rates are normal. There is no indication of any contamination in the oil. The AN level is acceptable for this fluid. The condition of the oil is suitable for further service.

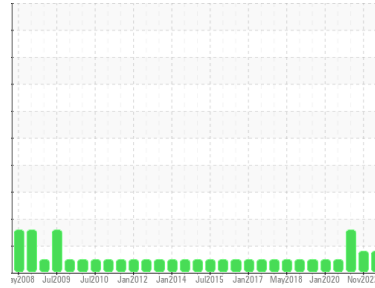
view report





OIL ANALYSIS REPORT

Sample Rating Trend



ISO



Machine Id
PHR-G1-THBR

Component
Thrust Bearing

Fluid
MOBIL DTE OIL HVY MEDIUM (11 LTR)

DIAGNOSIS

Recommendation

We recommend you service the filters on this component. Resample at the next service interval to monitor.

Wear

All component wear rates are normal.

Contamination

There is a light amount of silt (particulates < 14 microns in size) present in the oil.

Fluid Condition

The AN level is acceptable for this fluid. The condition of the oil is suitable for further service.

SAMPLE INFORMATION

	method	limit/base	current	history1	history2
Sample Number	Client Info		WC0455673	WC0455603	WC0316859
Sample Date	Client Info		08 Feb 2023	21 Nov 2022	24 Nov 2020
Machine Age	hrs	Client Info	0	0	0
Oil Age	hrs	Client Info	0	0	0
Oil Changed	Client Info		N/A	N/A	N/A
Sample Status			ATTENTION	ABNORMAL	ATTENTION

CONTAMINATION

	method	limit/base	current	history1	history2
Water	WC Method	>2	NEG	NEG	NEG

WEAR METALS

	method	limit/base	current	history1	history2	
Iron	ppm	ASTM D5185(m)	>85	20	19	17
Chromium	ppm	ASTM D5185(m)	>20	0	0	0
Nickel	ppm	ASTM D5185(m)	>20	0	<1	<1
Titanium	ppm	ASTM D5185(m)		0	0	0
Silver	ppm	ASTM D5185(m)		0	0	<1
Aluminum	ppm	ASTM D5185(m)	>40	0	0	<1
Lead	ppm	ASTM D5185(m)	>60	1	1	1
Copper	ppm	ASTM D5185(m)	>7	<1	<1	<1
Tin	ppm	ASTM D5185(m)	>40	11	11	10
Antimony	ppm	ASTM D5185(m)		<1	<1	<1
Vanadium	ppm	ASTM D5185(m)		0	0	0
Beryllium	ppm	ASTM D5185(m)		0	0	0
Cadmium	ppm	ASTM D5185(m)		0	0	0

ADDITIVES

	method	limit/base	current	history1	history2	
Boron	ppm	ASTM D5185(m)		<1	<1	<1
Barium	ppm	ASTM D5185(m)		0	0	0
Molybdenum	ppm	ASTM D5185(m)		0	0	0
Manganese	ppm	ASTM D5185(m)		0	0	0
Magnesium	ppm	ASTM D5185(m)		<1	0	<1
Calcium	ppm	ASTM D5185(m)		0	0	<1
Phosphorus	ppm	ASTM D5185(m)		8	7	2
Zinc	ppm	ASTM D5185(m)		8	8	6
Sulfur	ppm	ASTM D5185(m)		1961	1947	1993
Lithium	ppm	ASTM D5185(m)		<1	<1	<1

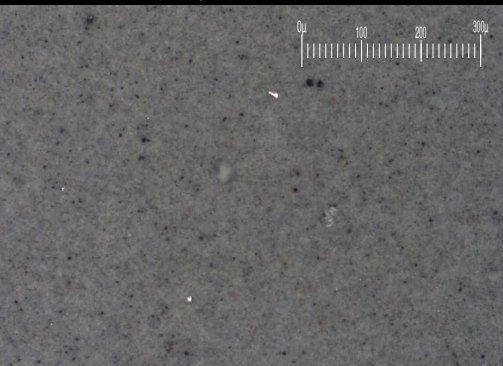
CONTAMINANTS

	method	limit/base	current	history1	history2	
Silicon	ppm	ASTM D5185(m)	>20	2	2	2
Sodium	ppm	ASTM D5185(m)		0	<1	<1
Potassium	ppm	ASTM D5185(m)	>20	<1	<1	0

FLUID CLEANLINESS

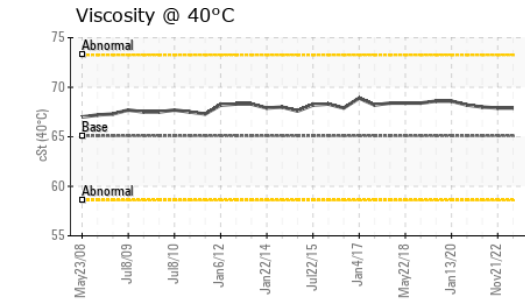
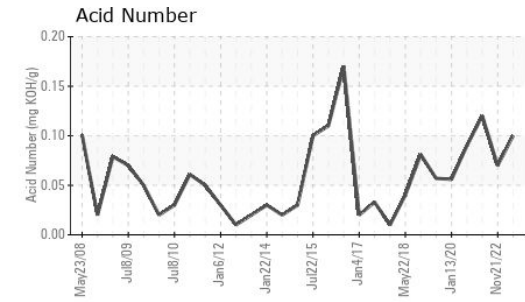
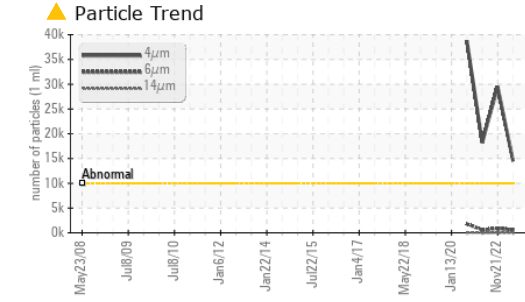
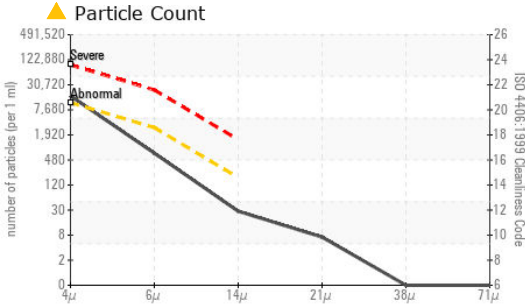
	method	limit/base	current	history1	history2
Particles >4µm	ASTM D7647	>10000	▲ 14510	▲ 29508	▲ 18231
Particles >6µm	ASTM D7647	>2500	614	881	599
Particles >14µm	ASTM D7647	>160	25	21	18
Particles >21µm	ASTM D7647	>40	6	6	3
Particles >38µm	ASTM D7647	>10	0	1	0
Particles >71µm	ASTM D7647	>3	0	0	0
Oil Cleanliness	ISO 4406 (c)	>20/18/14	▲ 21/16/12	▲ 22/17/12	▲ 21/16/11

Particle Filter (Magn: 100 x)





OIL ANALYSIS REPORT



FLUID DEGRADATION		method	limit/base	current	history1	history2
Acid Number (AN)	mg KOH/g	ASTM D974*		0.10	0.07	0.12
VISUAL		method	limit/base	current	history1	history2
White Metal	scalar	Visual*	NONE	NONE	NONE	▲ VLITE
Yellow Metal	scalar	Visual*	NONE	NONE	NONE	NONE
Precipitate	scalar	Visual*	NONE	NONE	NONE	NONE
Silt	scalar	Visual*	NONE	NONE	NONE	NONE
Debris	scalar	Visual*	NONE	NONE	NONE	NONE
Sand/Dirt	scalar	Visual*	NONE	NONE	NONE	NONE
Appearance	scalar	Visual*	NORML	NORML	NORML	NORML
Odor	scalar	Visual*	NORML	NORML	NORML	NORML
Emulsified Water	scalar	Visual*	>2	NEG	NEG	NEG
Free Water	scalar	Visual*		NEG	NEG	NEG

FLUID PROPERTIES		method	limit/base	current	history1	history2
Visc @ 40°C	cSt	ASTM D7279(m)	65.1	67.9	67.9	68.0

SAMPLE IMAGES		method	limit/base	current	history1	history2
Color						
Bottom						
PrtFilter						



Laboratory : WearCheck - C8-1175 Appleby Line, Burlington, ON L7L 5H9
Sample No. : WC0455673
Lab Number : 02554194
Unique Number : 5567209
Test Package : IND 2 (Additional Tests: BottomAnalysis, FilterPatch, PrtCount, TAN Man)

NEWFOUNDLAND POWER INC.
 50 DUFFY PLACE, PO BOX 8910
 ST. JOHNS, NL
 CA A1B 3P6
 Contact: Paul Martin
 pmartin@newfoundlandpower.com
 T:
 F: (709)737-2926

To discuss this sample report, contact Customer Service at 1-800-268-2131.
 Test denoted (*) outside scope of accreditation, (m) method modified, (e) tested at external lab.
 Validity of results and interpretation are based on the sample and information as supplied.