



FUEL REPORT

Sample Rating Trend

NORMAL

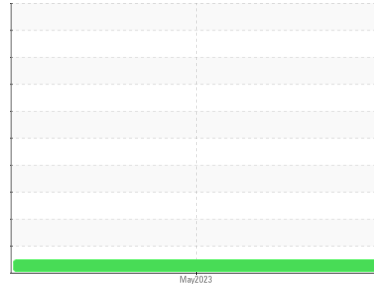


Area
[325234]

Machine Id
G6

Component
Diesel Fuel

Fluid
No.1 DIESEL FUEL (ULTRALOW SULPHUR) (--- GAL)



DIAGNOSIS

Recommendation

Les tests de laboratoire indiquent que ce carburant peut être utilisé et qu'il répond à toutes les exigences. Échantillonner de nouveau l'équipement au prochain intervalle de vidange afin d'en surveiller la condition.

Corrosion

(sans objet)

Contaminants

La propreté du système est acceptable pour votre objectif de propreté ISO 4406. La teneur en eau est négligeable. Il n'y a aucun indice de contamination dans le carburant diesel.

Fuel Condition

Tous les essais en laboratoire indiquent que cet échantillon satisfait aux spécifications pour le carburant diesel à ultra-faible teneur de soufre No.1 (US EPA/CGSB-3.517-3 type A).

SAMPLE INFORMATION		method	limit/base	current	history 1	history 2
Sample Number	Client Info			CU0020346	---	---
Sample Date	Client Info			09 May 2023	---	---
Machine Age	hrs	Client Info		0	---	---
Sample Status				NORMAL	---	---

PHYSICAL PROPERTIES		method	limit/base	current	history 1	history 2
Specific Gravity		ASTM D1298*	0.825	0.813	---	---
Fuel Color	text	Visual Screen*	Clear	Red	---	---
Visc @ 40°C	cSt	ASTM D7279(m)	1.8	1.5	---	---
Pensky-Martens Flash Point	°C	ASTM D7215*	38	49.6	---	---

SULFUR CONTENT		method	limit/base	current	history 1	history 2
Sulfur	ppm	ASTM D5185(m)	10	8	---	---

DISTILLATION		method	limit/base	current	history 1	history 2
Initial Boiling Point	°C	ASTM D2887*	159	158	---	---
5% Distillation Point	°C	ASTM D2887*		177	---	---
10% Distill Point	°C	ASTM D2887*	184	182	---	---
15% Distillation Point	°C	ASTM D2887*		187	---	---
20% Distill Point	°C	ASTM D2887*	196	191	---	---
30% Distill Point	°C	ASTM D2887*	205	198	---	---
40% Distill Point	°C	ASTM D2887*	216	206	---	---
50% Distill Point	°C	ASTM D2887*	227	214	---	---
60% Distill Point	°C	ASTM D2887*	238	221	---	---
70% Distill Point	°C	ASTM D2887*	251	228	---	---
80% Distill Point	°C	ASTM D2887*	264	239	---	---
85% Distillation Point	°C	ASTM D2887*		246	---	---
90% Distill Point	°C	ASTM D2887*	288	253	---	---
95% Distillation Point	°C	ASTM D2887*		266	---	---
Final Boiling Point	°C	ASTM D2887*	309	287	---	---

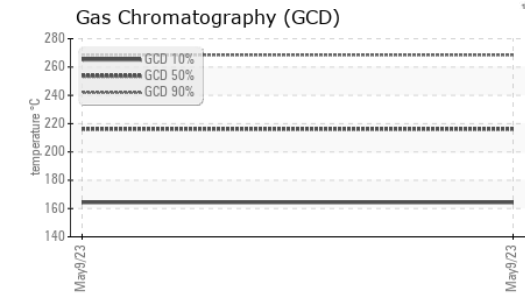
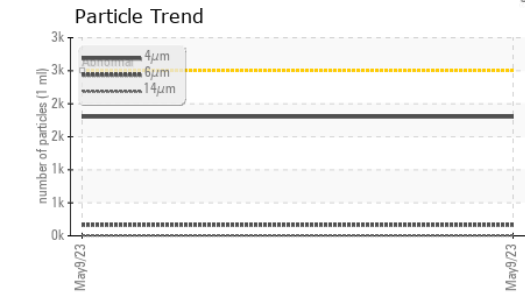
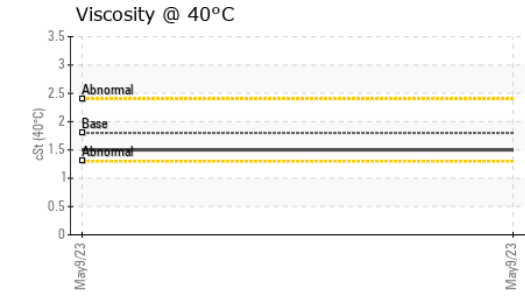
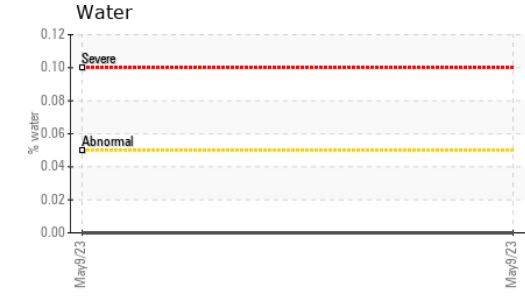
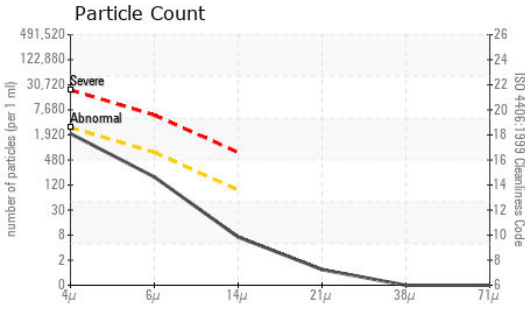
IGNITION QUALITY		method	limit/base	current	history 1	history 2
API Gravity		ASTM D1298*	40.1	42	---	---
Cetane Index		ASTM D4737*	<40.0	45	---	---

CONTAMINANTS		method	limit/base	current	history 1	history 2
Silicon	ppm	ASTM D5185(m)	<1.0	0	---	---
Sodium	ppm	ASTM D5185(m)	<0.1	0	---	---
Potassium	ppm	ASTM D5185(m)	<0.1	0	---	---
Water	%	ASTM D6304*	<0.05	0.00	---	---
ppm Water	ppm	ASTM D6304*	<500	0.00	---	---

FLUID CLEANLINESS		method	limit/base	current	history 1	history 2
Particles >4µm		ASTM D7647	>2500	1802	---	---
Particles >6µm		ASTM D7647	>640	165	---	---
Particles >14µm		ASTM D7647	>80	6	---	---
Particles >21µm		ASTM D7647	>20	1	---	---
Particles >38µm		ASTM D7647	>4	0	---	---
Particles >71µm		ASTM D7647	>3	0	---	---
Oil Cleanliness		ISO 4406 (c)	>18/16/13	18/15/10	---	---



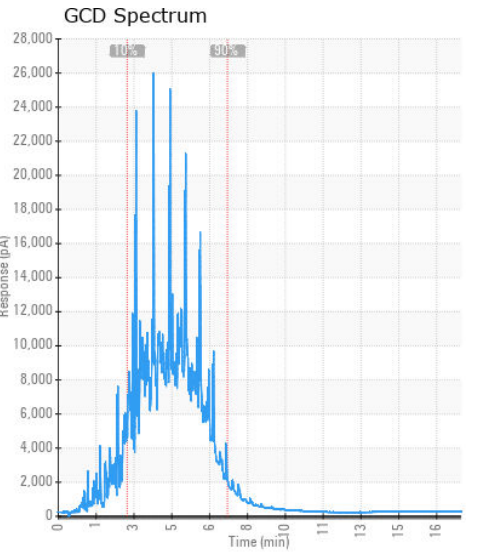
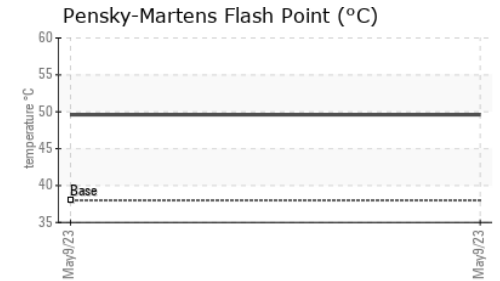
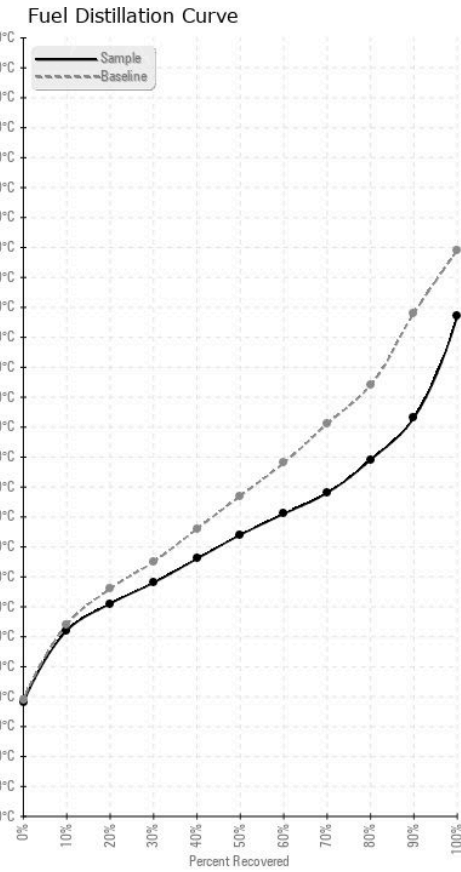
FUEL REPORT



HEAVY METALS	method	limit/base	current	history 1	history 2
Aluminum	ppm	ASTM D5185(m)	<0.1	0	---
Nickel	ppm	ASTM D5185(m)	<0.1	0	---
Lead	ppm	ASTM D5185(m)	<0.1	0	---
Vanadium	ppm	ASTM D5185(m)	<0.1	0	---
Iron	ppm	ASTM D5185(m)	<0.1	<1	---
Calcium	ppm	ASTM D5185(m)	<0.1	<1	---
Magnesium	ppm	ASTM D5185(m)	<0.1	<1	---
Phosphorus	ppm	ASTM D5185(m)	<0.1	<1	---
Zinc	ppm	ASTM D5185(m)	<0.1	<1	---

SAMPLE IMAGES	method	limit/base	current	history 1	history 2
Color				no image	no image
Bottom				no image	no image

GRAPHS



Laboratory : WearCheck - C8-1175 Appleby Line, Burlington, ON L7L 5H9
Sample No. : CU0020346 **Received** : 11 May 2023
Lab Number : 02557147 **Diagnosed** : 15 May 2023
Unique Number : 5578187 **Diagnostician** : Kevin Marson
Test Package : FUEL (Additional Tests: CC Flash, GC-PercFuel, PrtCount)
 To discuss this sample report, contact Customer Service at 1-800-268-2131.
 Test denoted (*) outside scope of accreditation, (m) method modified, (e) tested at external lab.
 Validity of results and interpretation are based on the sample and information as supplied.

CUMMINS EASTERN CANADA LP
 315 AV LIBERTE
 CANDIAC, QC
 CA J5R 6Z7
 Contact: Thomas Owens
 is275@cummins.com
 T: (450)638-6863
 F: (450)638-1202