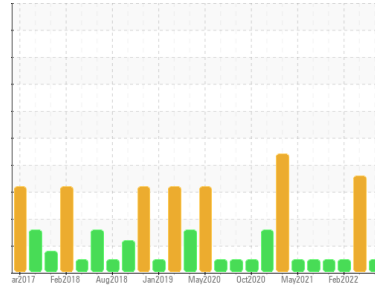




OIL ANALYSIS REPORT

Sample Rating Trend



NORMAL



Area
Materials Handling/SW Pedestal Crane
 Machine Id
WPD471201 CRANE PEDESTAL SOUTH WEST

Component
Luffing Brake
 Fluid
MOBIL MOBILUBE HD 80W90 (--- GAL)

DIAGNOSIS

SAMPLE INFORMATION		method	limit/base	current	history1	history2
Sample Number	Client Info			PP	PP13755937	PP13690595
Sample Date	Client Info			25 May 2023	07 Jul 2022	04 Feb 2022
Machine Age	hrs	Client Info		0	0	0
Oil Age	hrs	Client Info		0	0	0
Oil Changed	Client Info			N/A	N/A	N/A
Sample Status				NORMAL	ABNORMAL	NORMAL

WEAR METALS		method	limit/base	current	history1	history2
PQ		ASTM D8184*		24	47	40
Iron	ppm	ASTM D5185(m)	>350	53	70	57
Chromium	ppm	ASTM D5185(m)	>5	0	0	<1
Nickel	ppm	ASTM D5185(m)	>5	2	1	<1
Titanium	ppm	ASTM D5185(m)		<1	<1	0
Silver	ppm	ASTM D5185(m)		0	0	0
Aluminum	ppm	ASTM D5185(m)	>8	<1	<1	<1
Lead	ppm	ASTM D5185(m)	>10	0	1	<1
Copper	ppm	ASTM D5185(m)	>150	13	26	15
Tin	ppm	ASTM D5185(m)	>5	<1	2	<1
Antimony	ppm	ASTM D5185(m)	>5	0	<1	0
Vanadium	ppm	ASTM D5185(m)		0	0	0
Beryllium	ppm	ASTM D5185(m)		0	0	0
Cadmium	ppm	ASTM D5185(m)		0	0	0

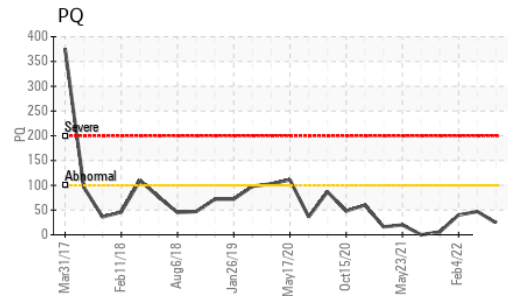
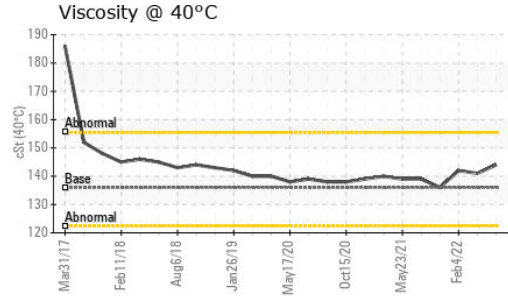
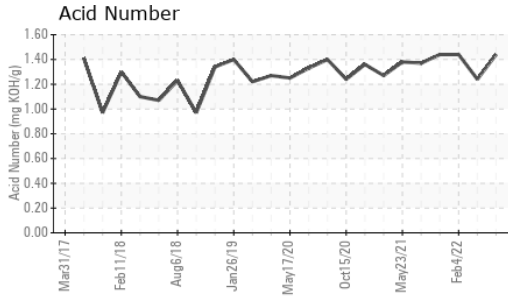
ADDITIVES		method	limit/base	current	history1	history2
Boron	ppm	ASTM D5185(m)		157	146	168
Barium	ppm	ASTM D5185(m)		0	<1	0
Molybdenum	ppm	ASTM D5185(m)		0	0	<1
Manganese	ppm	ASTM D5185(m)		<1	1	<1
Magnesium	ppm	ASTM D5185(m)		0	2	<1
Calcium	ppm	ASTM D5185(m)		1	8	4
Phosphorus	ppm	ASTM D5185(m)		1103	965	1029
Zinc	ppm	ASTM D5185(m)		68	96	17
Sulfur	ppm	ASTM D5185(m)		23232	23767	23310
Lithium	ppm	ASTM D5185(m)		<1	<1	<1

CONTAMINANTS		method	limit/base	current	history1	history2
Silicon	ppm	ASTM D5185(m)	>400	2	3	2
Sodium	ppm	ASTM D5185(m)		4	3	<1
Potassium	ppm	ASTM D5185(m)	>20	<1	<1	<1

FLUID DEGRADATION		method	limit/base	current	history1	history2
Acid Number (AN)	mg KOH/g	ASTM D974*		1.44	1.24	1.44



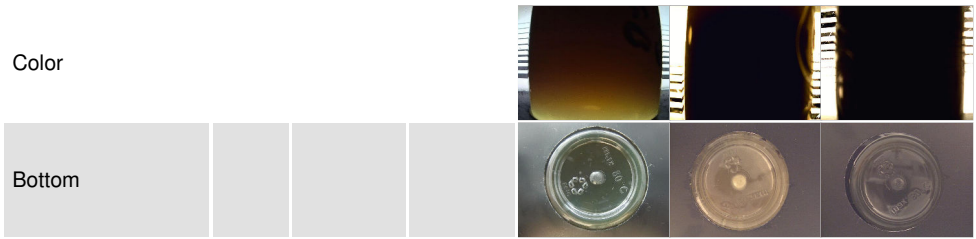
OIL ANALYSIS REPORT



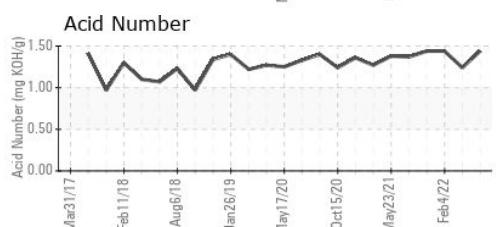
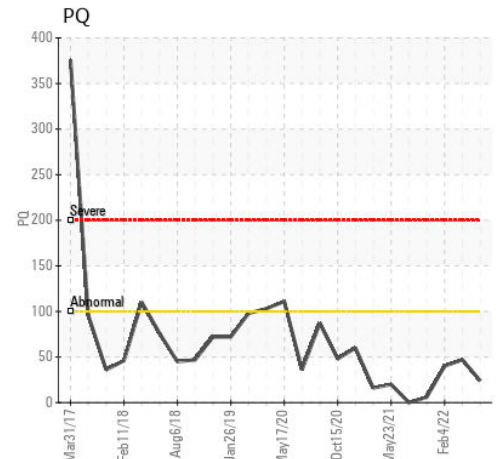
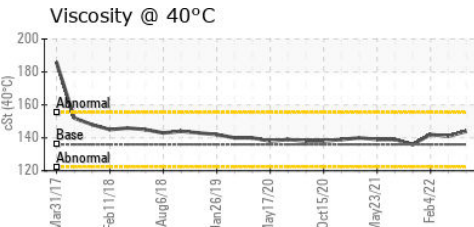
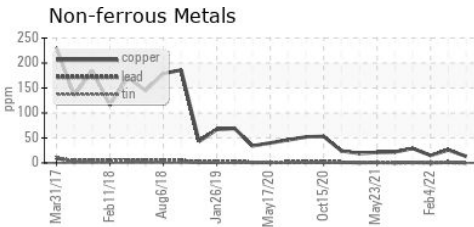
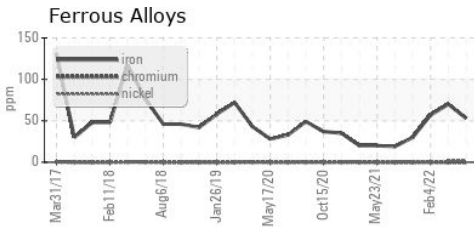
PARAMETER	method	limit/base	current	history1	history2
White Metal	scalar	Visual*	NONE	NONE	NONE
Yellow Metal	scalar	Visual*	NONE	NONE	NONE
Precipitate	scalar	Visual*	NONE	▲ HEAVY	NONE
Silt	scalar	Visual*	NONE	VLITE	NONE
Debris	scalar	Visual*	NONE	NONE	VLITE
Sand/Dirt	scalar	Visual*	NONE	NONE	NONE
Appearance	scalar	Visual*	NORML	▲ LAYRD	NORML
Odor	scalar	Visual*	NORML	NORML	NORML
Emulsified Water	scalar	Visual*	>0.2	NEG	NEG
Free Water	scalar	Visual*		▲ >10%	NEG

FLUID PROPERTIES	method	limit/base	current	history1	history2
Visc @ 40°C	cSt	ASTM D7279(m)	136	144	141

SAMPLE IMAGES	method	limit/base	current	history1	history2
---------------	--------	------------	---------	----------	----------



GRAPHS



Laboratory : WearCheck - C8-1175 Appleby Line, Burlington, ON L7L 5H9
 Sample No. : PP
 Lab Number : 02559916
 Unique Number : 5580956
 Test Package : MAR 2 (Additional Tests: TAN Man)

ExxonMobil Canada East Ltd.
 Hebron-Materials and Repair Coordin, Suite 1000, 100 New Gow
 St. John's, NL
 CA A1C 6K3
 Contact: Liam Maher
 liam.m.maher@exxonmobil.com
 T: (709)273-3729
 F:

To discuss this sample report, contact Customer Service at 1-800-268-2131.
 Test denoted (*) outside scope of accreditation, (m) method modified, (e) tested at external lab.
 Validity of results and interpretation are based on the sample and information as supplied.