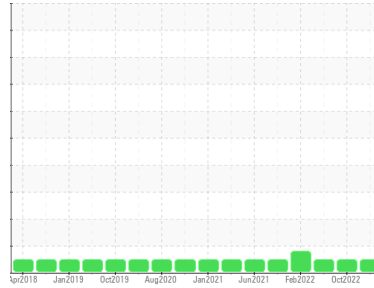




# GREASE ANALYSIS

Sample Rating Trend

**NORMAL**



Area  
**Materials Handling/SW Pedestal Crane**  
 Machine Id  
**WPD471201 CRANE PEDESTAL SOUTH WEST**

Component  
**0° Grease**  
 Fluid  
**MOBIL MOBILGREASE XHP 222 (--- GAL)**

## DIAGNOSIS

### Recommendation

Resample at the next service interval to monitor.

### Wear

All component wear rates are normal.

### Grease Condition

The condition of the grease is acceptable for the time in service.

### Contaminants

There is no indication of any contamination in the grease.

## SAMPLE INFORMATION

	method	limit/base	current	history1	history2
Sample Number	Client Info		<b>PP</b>	PP13790802	PP13755937
Sample Date	Client Info		<b>25 May 2023</b>	26 Oct 2022	07 Jul 2022
Machine Age	hrs	Client Info	<b>0</b>	0	0
Grease Age	hrs	Client Info	<b>0</b>	0	0
Grease Serviced	Client Info		<b>N/A</b>	N/A	N/A
Sample Status			<b>NORMAL</b>	NORMAL	SEVERE

## WEAR METALS

	method	limit/base	current	history1	history2
PQ	ASTM D8184*	>200	<b>240</b>	820	750
Iron	ppm	ASTM D5185(m)	<b>&gt;250</b>	65	45
Chromium	ppm	ASTM D5185(m)	<b>&gt;10</b>	<1	<1
Nickel	ppm	ASTM D5185(m)	<b>&gt;5</b>	<1	<1
Cadmium	ppm	ASTM D5185(m)	<b>0</b>	0	<1
Titanium	ppm	ASTM D5185(m)	<b>0</b>	0	0
Vanadium	ppm	ASTM D5185(m)	<b>0</b>	0	0
Lead	ppm	ASTM D5185(m)	<b>&gt;25</b>	<1	2
Copper	ppm	ASTM D5185(m)	<b>&gt;75</b>	<1	<1
Tin	ppm	ASTM D5185(m)	<b>&gt;5</b>	0	0
Silver	ppm	ASTM D5185(m)	<b>&gt;5</b>	0	0

## ADDITIVES

	method	limit/base	current	history1	history2
Boron	ppm	ASTM D5185(m)	<b>8</b>	16	13
Magnesium	ppm	ASTM D5185(m)	<b>0</b>	<1	2
Manganese	ppm	ASTM D5185(m)	<b>&lt;1</b>	<1	<1
Molybdenum	ppm	ASTM D5185(m)	<b>23</b>	43	42
Phosphorus	ppm	ASTM D5185(m)	<b>163</b>	294	153
Zinc	ppm	ASTM D5185(m)	<b>220</b>	393	234
Antimony	ppm	ASTM D5185(m)	<b>9</b>	25	18

## THICKENER/SOAP

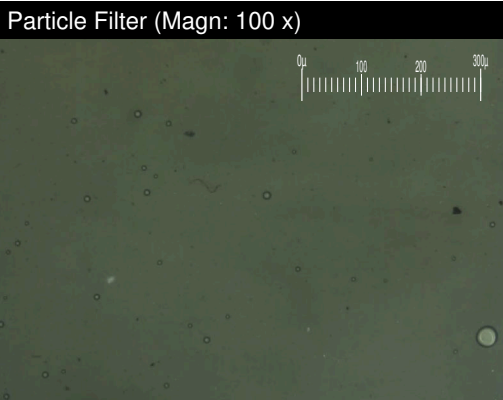
	method	limit/base	current	history1	history2
Aluminum	ppm	ASTM D5185(m)	<b>&lt;1</b>	<1	<1
Barium	ppm	ASTM D5185(m)	<b>0</b>	<1	<1
Calcium	ppm	ASTM D5185(m)	<b>16</b>	33	17
Sodium	ppm	ASTM D5185(m)	<b>3</b>	6	11
Lithium	ppm	ASTM D5185(m)	<b>207</b>	397	236
Sulfur	ppm	ASTM D5185(m)	<b>883</b>	1580	883

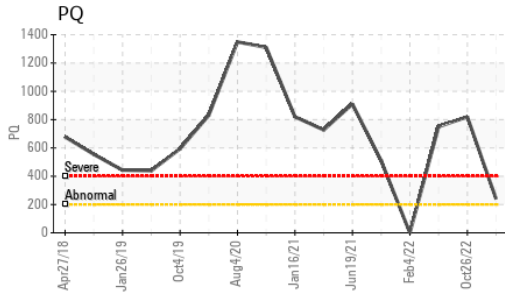
## CONTAMINANTS

	method	limit/base	current	history1	history2
Silicon	ppm	ASTM D5185(m)	<b>&gt;150</b>	2	1
Potassium	ppm	ASTM D5185(m)	<b>1</b>	<1	2

## GREASE CONDITION

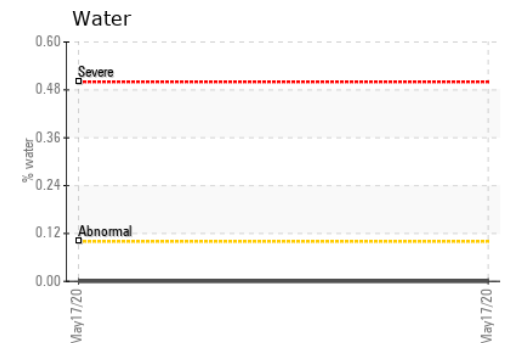
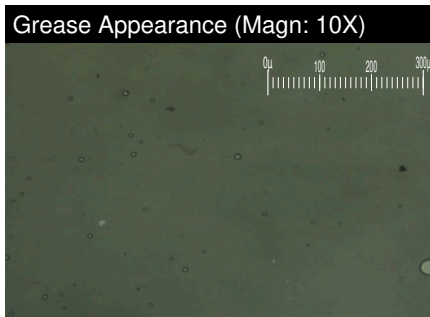
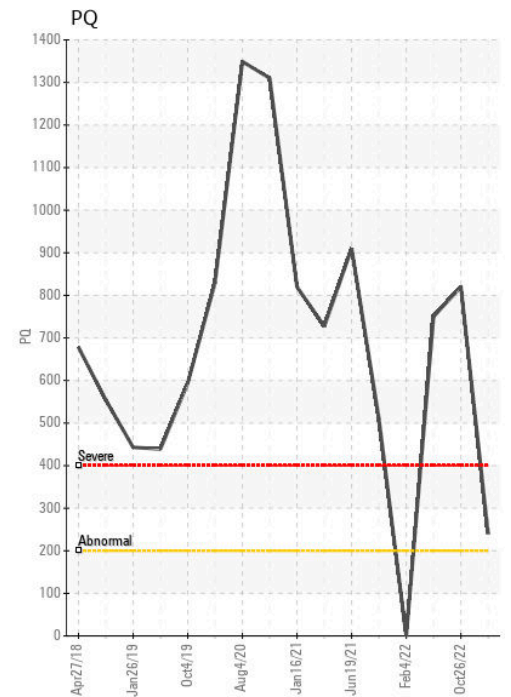
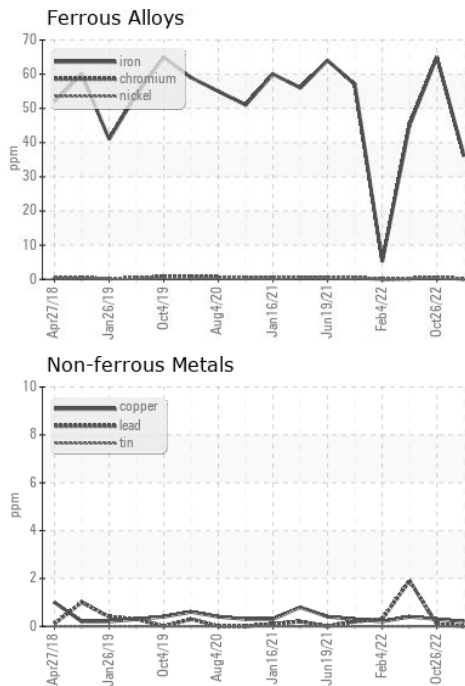
	method	limit/base	current	history1	history2
Grease Color	Visual*	Dk Blue	<b>Green</b>	Green	Brown
Texture	In-house*		<b>Buttery</b>	Long fiber	Long fiber
NLGI Consistency	NLGI Scale	SKF Method* 2	<b>2</b>	2	2





	SAMPLE IMAGES	method	limit/base	current	history1	history2
Color						
Bottom						
PrtFilter						

## GRAPHS



**Laboratory** : WearCheck - C8-1175 Appleby Line, Burlington, ON L7L 5H9  
**Sample No.** : PP  
**Lab Number** : 02560001  
**Unique Number** : 5581041  
**Test Package** : GRS 1 ( Additional Tests: BottomAnalysis, PrtFilter )

**ExxonMobil Canada East Ltd.**  
 Hebron-Materials and Repair Coordin, Suite 1000, 100 New Gow  
 St. John's, NL  
 CA A1C 6K3  
 Contact: Liam Maher  
 liam.m.maher@exxonmobil.com  
 T: (709)273-3729  
 F:

To discuss this sample report, contact Customer Service at 1-800-268-2131.  
 Test denoted (\*) outside scope of accreditation, (m) method modified, (e) tested at external lab.  
 Validity of results and interpretation are based on the sample and information as supplied.