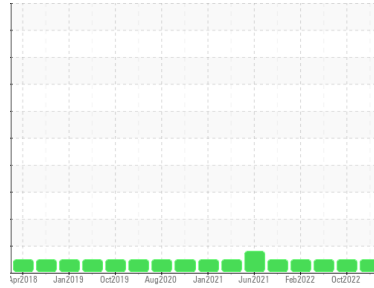




GREASE ANALYSIS

Sample Rating Trend

NORMAL



Area
Materials Handling/SW Pedestal Crane
 Machine Id
WPD471201 CRANE PEDESTAL SOUTH WEST

Component
270° Grease
 Fluid
MOBIL MOBILGREASE XHP 222 (--- GAL)

DIAGNOSIS

Recommendation

Resample at the next service interval to monitor.

Wear

All component wear rates are normal.

Grease Condition

The condition of the grease is acceptable for the time in service.

Contaminants

There is no indication of any contamination in the grease.

SAMPLE INFORMATION		method	limit/base	current	history1	history2
Sample Number	Client Info			PP	PP13790802	PP13755937
Sample Date	Client Info			25 May 2023	26 Oct 2022	07 Jul 2022
Machine Age	hrs	Client Info		0	0	0
Grease Age	hrs	Client Info		0	0	0
Grease Serviced	Client Info			N/A	N/A	N/A
Sample Status				NORMAL	NORMAL	NORMAL

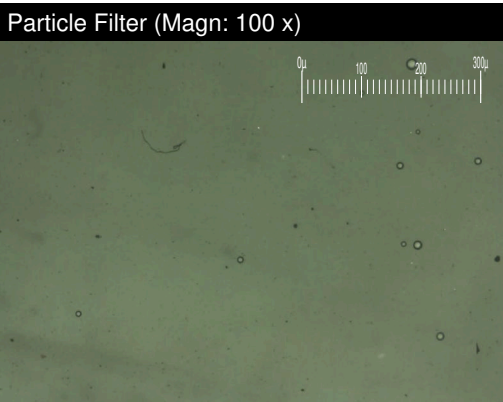
WEAR METALS		method	limit/base	current	history1	history2
PQ		ASTM D8184*	>200	260	420	700
Iron	ppm	ASTM D5185(m)	>250	32	44	46
Chromium	ppm	ASTM D5185(m)	>10	0	<1	<1
Nickel	ppm	ASTM D5185(m)	>5	<1	<1	0
Cadmium	ppm	ASTM D5185(m)		0	0	0
Titanium	ppm	ASTM D5185(m)		0	0	0
Vanadium	ppm	ASTM D5185(m)		0	0	0
Lead	ppm	ASTM D5185(m)	>25	0	<1	0
Copper	ppm	ASTM D5185(m)	>75	0	<1	<1
Tin	ppm	ASTM D5185(m)	>5	0	0	0
Silver	ppm	ASTM D5185(m)	>5	0	0	0

ADDITIVES		method	limit/base	current	history1	history2
Boron	ppm	ASTM D5185(m)		8	11	13
Magnesium	ppm	ASTM D5185(m)		0	<1	1
Manganese	ppm	ASTM D5185(m)		<1	<1	<1
Molybdenum	ppm	ASTM D5185(m)		23	34	45
Phosphorus	ppm	ASTM D5185(m)		158	169	151
Zinc	ppm	ASTM D5185(m)		219	231	227
Antimony	ppm	ASTM D5185(m)		8	16	18

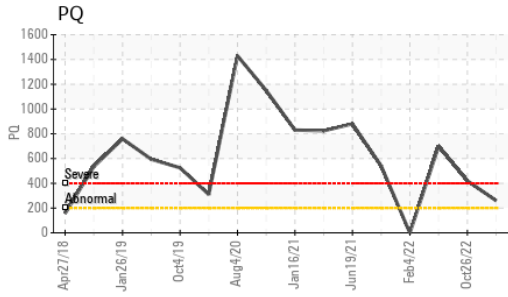
THICKENER/SOAP		method	limit/base	current	history1	history2
Aluminum	ppm	ASTM D5185(m)		<1	<1	<1
Barium	ppm	ASTM D5185(m)		0	0	<1
Calcium	ppm	ASTM D5185(m)		5	18	16
Sodium	ppm	ASTM D5185(m)		2	8	11
Lithium	ppm	ASTM D5185(m)		204	240	236
Sulfur	ppm	ASTM D5185(m)		873	870	885

CONTAMINANTS		method	limit/base	current	history1	history2
Silicon	ppm	ASTM D5185(m)	>150	<1	<1	1
Potassium	ppm	ASTM D5185(m)		<1	<1	1

GREASE CONDITION		method	limit/base	current	history1	history2
Grease Color	Visual*	Dk Blue		Green	Green	Brown
Texture	In-house*			Buttery	Long fiber	Long fiber
NLGI Consistency	NLGI Scale	SKF Method*	2	1-2	2	2

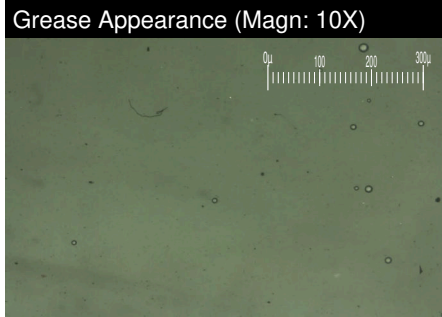
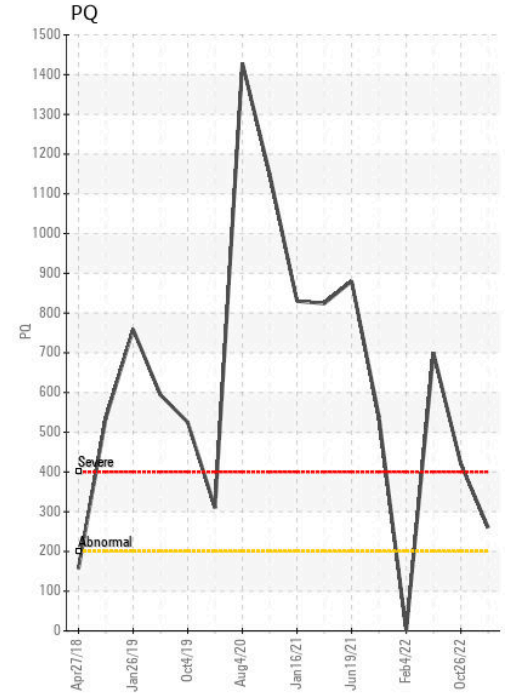
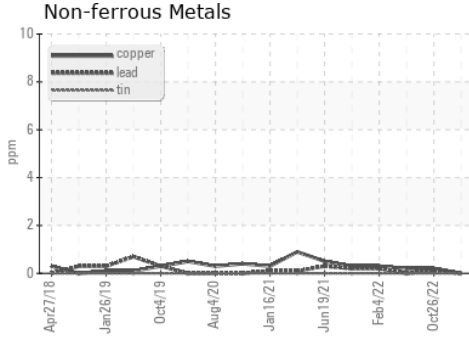
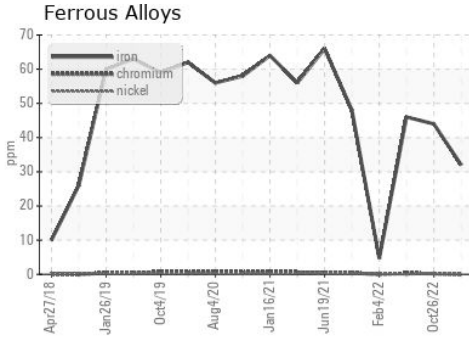


GREASE ANALYSIS



SAMPLE IMAGES	method	limit/base	current	history1	history2
Color					
Bottom					
PrtFilter					

GRAPHS



CALA
ISO 17025:2017 Accredited Laboratory

Laboratory : WearCheck - C8-1175 Appleby Line, Burlington, ON L7L 5H9
Sample No. : PP
Lab Number : 02560004
Unique Number : 5581044
Test Package : GRS 1 (Additional Tests: BottomAnalysis, PrtFilter)

ExxonMobil Canada East Ltd.
 Hebron-Materials and Repair Coordin, Suite 1000, 100 New Gow
 St. John's, NL
 CA A1C 6K3
 Contact: Liam Maher
 liam.m.maher@exxonmobil.com
 T: (709)273-3729
 F:

*To discuss this sample report, contact Customer Service at 1-800-268-2131.
 Test denoted (*) outside scope of accreditation, (m) method modified, (e) tested at external lab.
 Validity of results and interpretation are based on the sample and information as supplied.*