



# COOLANT REPORT

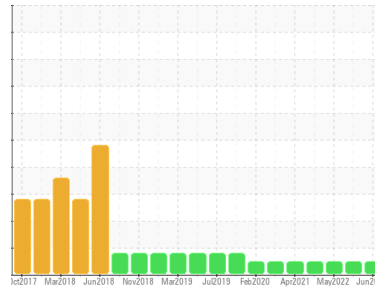
Sample Rating Trend

**NORMAL**



Machine Id  
**LIDM06BE (S/N G2J-00165)**

Component  
**Auxiliary Circuit Coolant**  
Fluid  
**CHEVRON HEAVY DUTY PF COOLANT (2000 LTR)**



## DIAGNOSIS

### Recommendation

Échantillonner de nouveau l'équipement au prochain intervalle de vidange afin d'en surveiller la condition.

### Corrosion

Les taux d'usure de tous les composants sont normaux.

### Contaminants

Il n'y a aucun indice de contamination dans l'agent de refroidissement.

### Coolant Condition

L'état de l'agent de refroidissement est acceptable pour la durée de service.

SAMPLE INFORMATION		method	limit/base	current	history1	history2
Sample Number		Client Info		<b>WC0817864</b>	WC0714222	WC0661877
Sample Date		Client Info		<b>09 Jun 2023</b>	08 Dec 2022	06 May 2022
Machine Age	hrs	Client Info		<b>20993</b>	87272	82467
Oil Age	hrs	Client Info		<b>20993</b>	87272	82467
Oil Changed		Client Info		<b>N/A</b>	Not Changd	Not Changd
Sample Status				<b>NORMAL</b>	NORMAL	NORMAL

PHYSICAL TEST RESULTS		method	limit/base	current	history1	history2
Specific Gravity		ASTM D1298*	1.065	<b>1.065</b>	1.065	1.064
pH	Scale 0-14	ASTM D1287*	10.5	<b>7.93</b>	7.95	8.17
Nitrites	ppm	Alcan Test Kit*	1600	<b>1960</b>	960	1080
Reserve Alkalinity	Scale 0-20	ASTM D1121*	10.5	<b>4.0</b>	3.5	3.4
Percentage Glycol	%	ASTM D3321*	50	<b>48.2</b>	48.0	47.7
Freezing Point	°C	ASTM D3321*	-37	<b>-31</b>	-31	-28
Carboxylate				---	---	---

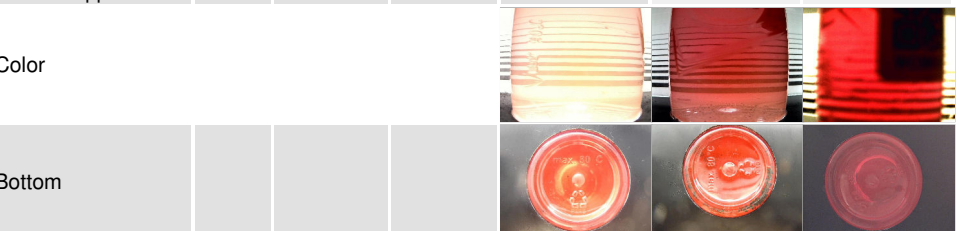
CORROSION INHIBITORS		method	limit/base	current	history1	history2
Silicon	ppm	ASTM D5185(m)	1000	<b>53</b>	47	47
Phosphorus	ppm	ASTM D5185(m)	0	<b>28</b>	19	14
Boron	ppm	ASTM D5185(m)		<b>461</b>	417	409
Molybdenum	ppm	ASTM D5185(m)		<b>278</b>	243	250

CORROSION		method	limit/base	current	history1	history2
Iron	ppm	ASTM D5185(m)	>15	<b>1</b>	1	<1
Aluminum	ppm	ASTM D5185(m)	>10	<b>3</b>	2	3
Copper	ppm	ASTM D5185(m)	>10	<b>4</b>	3	1
Lead	ppm	ASTM D5185(m)	>10	<b>&lt;1</b>	0	<1
Tin	ppm	ASTM D5185(m)	>10	<b>&lt;1</b>	0	<1
Silver	ppm	ASTM D5185(m)	>10	<b>&lt;1</b>	0	<1
Zinc	ppm	ASTM D5185(m)		<b>0</b>	2	1

CARRIER SALTS		method	limit/base	current	history1	history2
Sodium	ppm	ASTM D5185(m)		<b>2528</b>	2330	1730
Potassium	ppm	ASTM D5185(m)		<b>111</b>	59	37

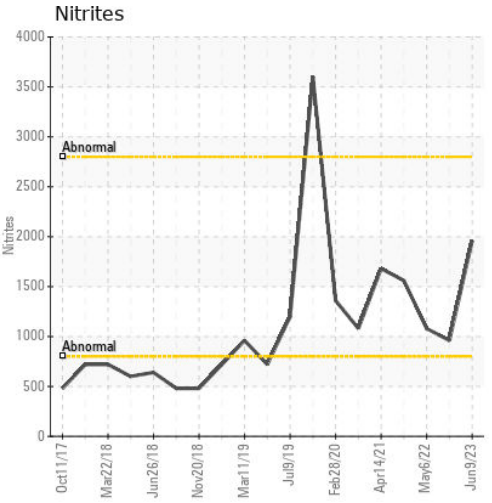
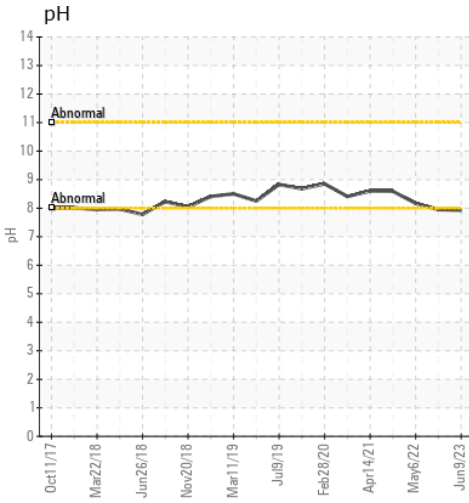
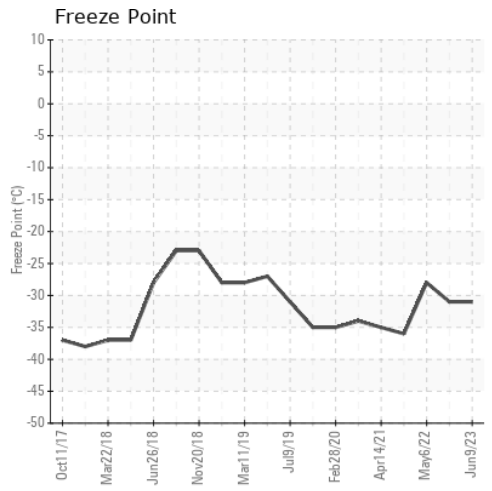
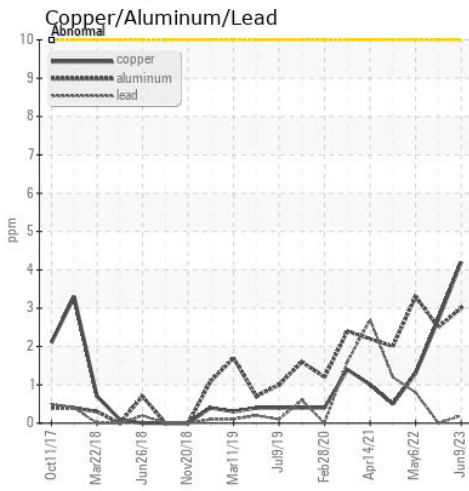
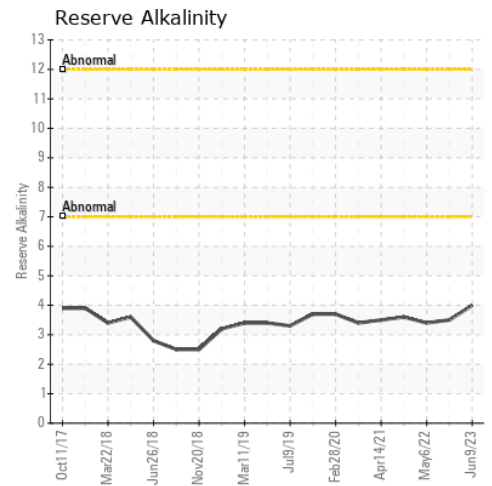
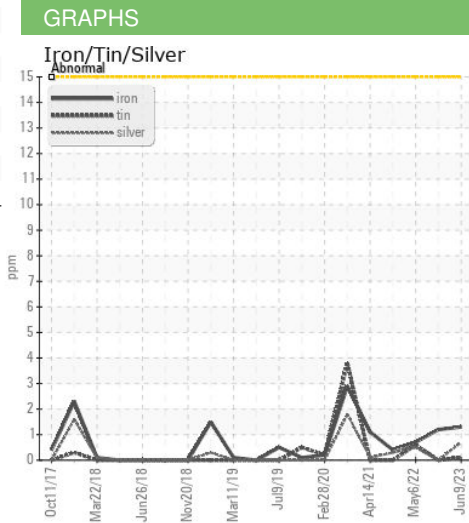
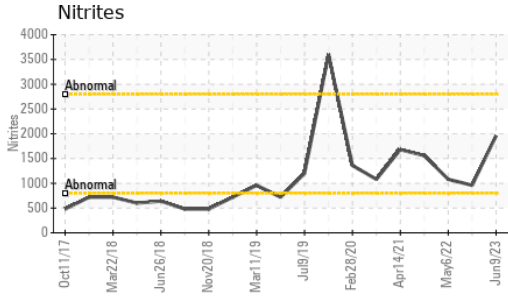
SCALE POTENTIAL		method	limit/base	current	history1	history2
Calcium	ppm	ASTM D5185(m)	>100	<b>2</b>	7	4
Magnesium	ppm	ASTM D5185(m)	>40	<b>&lt;1</b>	1	1
Hardness	mg/L CaCO3	In-house*	<75	<b>9</b>	23	15

VISUAL		method	limit/base	current	history1	history2
Coolant Color		Visual*	Purple	<b>Pink</b>	Pink	Pink
Coolant Appearance		Visual*	Clear	<b>Clear</b>	Clear	Clear





# COOLANT REPORT



**Laboratory** : WearCheck - C8-1175 Appleby Line, Burlington, ON L7L 5H9  
**Sample No.** : WC0817864  
**Lab Number** : 02563969  
**Unique Number** : 5593010  
**Test Package** : COOL

**Received** : 13 Jun 2023  
**Diagnosed** : 14 Jun 2023  
**Diagnostician** : Wes Davis

**EDL NA Recips-Lydia**  
 6985 CHEMIN DES SOURCES  
 LACHUTE, QC  
 CA J8H 2C5  
 Contact: Eloi Legault  
 eloi.legault@energydi.com  
 T: (450)526-4001  
 F:

To discuss this sample report, contact Customer Service at 1-800-268-2131.  
 Test denoted (\*) outside scope of accreditation, (m) method modified, (e) tested at external lab.  
 Validity of results and interpretation are based on the sample and information as supplied.