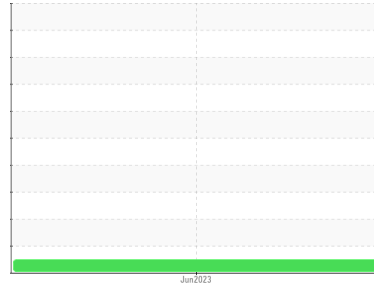




FILTER DEBRIS ANALYSIS

Sample Rating Trend

NORMAL



Machine Id
05865386
 Component
Filter
 Fluid
NOT GIVEN (--- GAL)

DIAGNOSIS

Recommendation

Resample at the next service interval to monitor. Please specify the brand, type, and viscosity of the oil on your next sample.

Wear Particles

The filter contained no appreciable wear particles. All filter wear levels are normal.

Contaminants

The filter contained only normal levels of contaminants, and debris (dirt and fibres). All filter contaminant levels are normal.

SAMPLE INFORMATION

	method	limit/base	current	history1	history2
Sample Number	Client Info		PP	---	---
Sample Date	Client Info		09 Jun 2023	---	---
Machine Age	hrs Client Info		0	---	---
Oil Age	hrs Client Info		0	---	---
Oil Changed	Client Info		N/A	---	---
Sample Status			NORMAL	---	---

FILTER WEAR PARTICLES

	method	limit/base	current	history1	history2
Ferrous Rubbing	Scale 0-10 ASTM D7684*		1		
Ferrous Sliding	Scale 0-10 ASTM D7684*				
Ferrous Cutting	Scale 0-10 ASTM D7684*				
Ferrous Rolling	Scale 0-10 ASTM D7684*				
Ferrous Break-in	Scale 0-10 ASTM D7684*				
Ferrous Spheres	Scale 0-10 ASTM D7684*				
Ferrous Black Oxides	Scale 0-10 ASTM D7684*				
Ferrous Red Oxides	Scale 0-10 ASTM D7684*				
Ferrous Corrosive	Scale 0-10 ASTM D7684*				
Ferrous Other	Scale 0-10 ASTM D7684*				
Nonferrous Rubbing	Scale 0-10 ASTM D7684*				
Nonferrous Sliding	Scale 0-10 ASTM D7684*				
Nonferrous Cutting	Scale 0-10 ASTM D7684*				
Nonferrous Rolling	Scale 0-10 ASTM D7684*				
Nonferrous Other	Scale 0-10 ASTM D7684*				

FILTER CONTAMINANTS

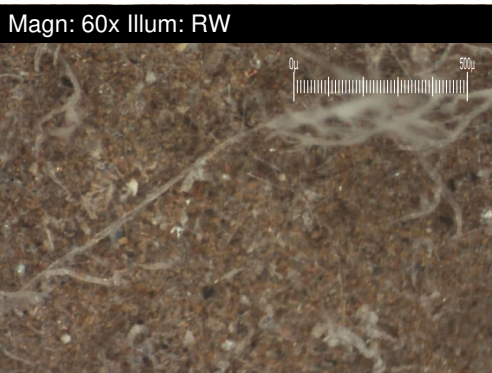
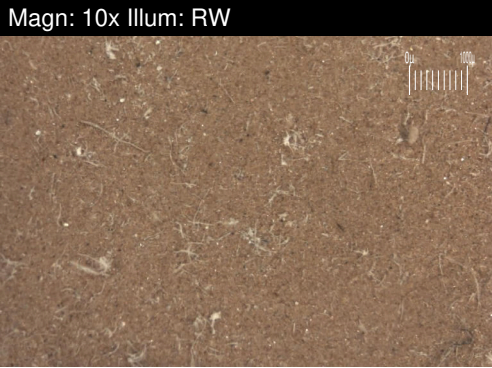
	method	limit/base	current	history1	history2
Sand/Dirt	Scale 0-10 ASTM D7684*		3		
Fibres	Scale 0-10 ASTM D7684*		2		
Spheres	Scale 0-10 ASTM D7684*				
Other	Scale 0-10 ASTM D7684*				
Patch Weight	mg ASTM D7684*		34	---	---

SAMPLE IMAGES

	method	limit/base	current	history1	history2
Color				no image	no image
Bottom				no image	no image

FILTER REPORT

Machine Id
05865386
Component
Filter
Fluid
NOT GIVEN (--- GAL)



WEAR

The filter contained no appreciable wear particles. All filter wear levels are normal.