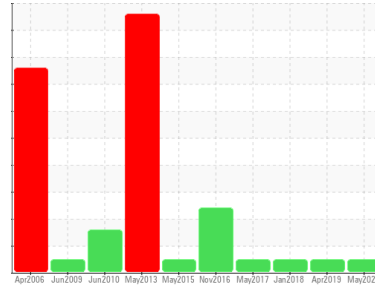




OIL ANALYSIS REPORT

Sample Rating Trend



NORMAL



Area

M11

Machine Id

44-P-2530B-DE WATER INJ. BOOSTER PUMP

Component

Drive End Bearing

Fluid

MOBIL DTE OIL LIGHT (--- LTR)

DIAGNOSIS

Recommendation

Confirm the source of the lubricant being utilized for top-up/fill. Resample at the next service interval to monitor. NOTE: Please provide information regarding reservoir capacity, filter type and micron rating with next sample.

Wear

All component wear rates are normal.

Contamination

There is no indication of any contamination in the oil.

Fluid Condition

Additive levels indicate the addition of a different brand, or type of oil. The condition of the oil is acceptable for the time in service.

SAMPLE INFORMATION

method	limit/base	current	history1	history2
Sample Number	Client Info	PP	PP	PP
Sample Date	Client Info	22 May 2023	23 Apr 2019	20 Jan 2018
Machine Age	days	0	0	0
Oil Age	days	0	0	0
Oil Changed	Client Info	N/A	N/A	N/A
Sample Status		NORMAL	NORMAL	NORMAL

WEAR METALS

method	limit/base	current	history1	history2	
Iron	ppm	ASTM D5185(m) >20	<1	2	2
Chromium	ppm	ASTM D5185(m) >2	0	0	0
Nickel	ppm	ASTM D5185(m) >2	0	<1	0
Titanium	ppm	ASTM D5185(m)	0	0	0
Silver	ppm	ASTM D5185(m)	0	0	<1
Aluminum	ppm	ASTM D5185(m) >5	<1	<1	0
Lead	ppm	ASTM D5185(m) >25	0	0	<1
Copper	ppm	ASTM D5185(m) >5	<1	<1	<1
Tin	ppm	ASTM D5185(m) >15	0	0	0
Antimony	ppm	ASTM D5185(m)	<1	0	0
Vanadium	ppm	ASTM D5185(m)	0	0	0
Beryllium	ppm	ASTM D5185(m)	0	0	0
Cadmium	ppm	ASTM D5185(m)	0	0	0

ADDITIVES

method	limit/base	current	history1	history2	
Boron	ppm	ASTM D5185(m)	0	0	<1
Barium	ppm	ASTM D5185(m)	0	0	0
Molybdenum	ppm	ASTM D5185(m)	0	0	0
Manganese	ppm	ASTM D5185(m)	0	<1	0
Magnesium	ppm	ASTM D5185(m)	0	2	<1
Calcium	ppm	ASTM D5185(m)	0	2	<1
Phosphorus	ppm	ASTM D5185(m)	1241	628	419
Zinc	ppm	ASTM D5185(m)	<1	6	2
Sulfur	ppm	ASTM D5185(m)	23	249	335
Lithium	ppm	ASTM D5185(m)	<1	0	<1

CONTAMINANTS

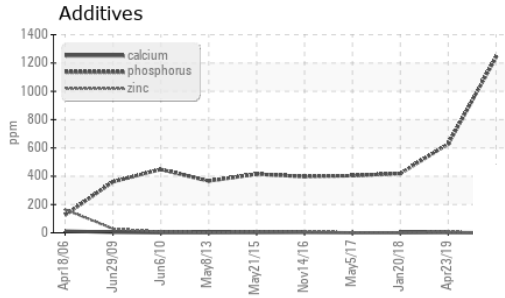
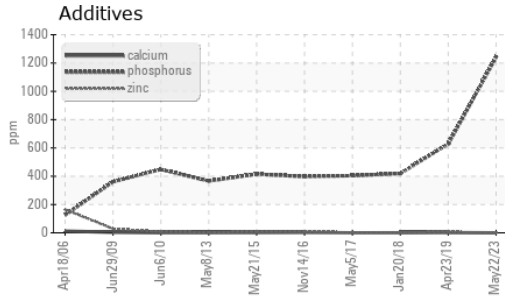
method	limit/base	current	history1	history2	
Silicon	ppm	ASTM D5185(m) >15	<1	<1	<1
Sodium	ppm	ASTM D5185(m)	0	<1	0
Potassium	ppm	ASTM D5185(m) >20	0	0	<1

VISUAL

method	limit/base	current	history1	history2		
White Metal	scalar	Visual*	NONE	NONE	NONE	NONE
Yellow Metal	scalar	Visual*	NONE	NONE	NONE	NONE
Precipitate	scalar	Visual*	NONE	NONE	NONE	NONE
Silt	scalar	Visual*	NONE	NONE	NONE	NONE
Debris	scalar	Visual*	NONE	NONE	VLITE	VLITE
Sand/Dirt	scalar	Visual*	NONE	NONE	NONE	NONE
Appearance	scalar	Visual*	NORML	NORML	NORML	NORML
Odor	scalar	Visual*	NORML	NORML	NORML	NORML
Emulsified Water	scalar	Visual*	>0.1	NEG	NEG	NEG
Free Water	scalar	Visual*		NEG	NEG	NEG

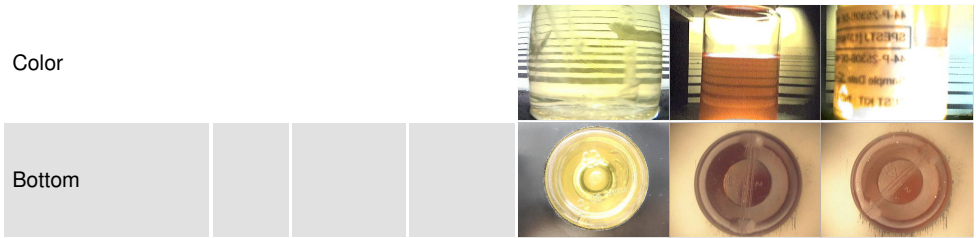


OIL ANALYSIS REPORT

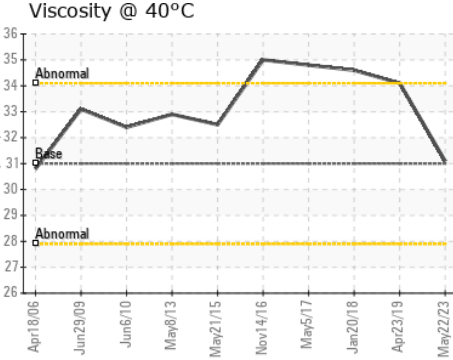
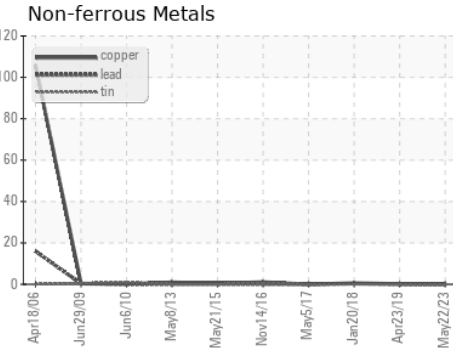
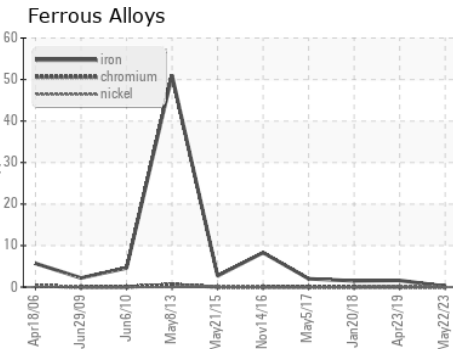


FLUID PROPERTIES	method	limit/base	current	history1	history2
Visc @ 40°C	cSt	ASTM D7279(m)	31	31.1	34.1

SAMPLE IMAGES	method	limit/base	current	history1	history2
---------------	--------	------------	---------	----------	----------



GRAPHS



Laboratory : WearCheck - C8-1175 Appleby Line, Burlington, ON L7L 5H9 HUSKY SEA ROSE /AKER SOLUTIONS
Sample No. : PP **Received** : 15 Jun 2023
Lab Number : 02564379 **Diagnosed** : 15 Jun 2023
Unique Number : 5593420 **Diagnostician** : Kevin Marson
Test Package : IND 1

To discuss this sample report, contact Customer Service at 1-800-268-2131.
 Test denoted (*) outside scope of accreditation, (m) method modified, (e) tested at external lab.
 Validity of results and interpretation are based on the sample and information as supplied.

PO BOX 20
 ST. JOHN'S, NL
 CA A1C 6C9
 Contact: Nick Fewer
 nick.fewer@akersolutions.com
 T: (709)757-4582
 F: (709)722-8730