



FILTER DEBRIS ANALYSIS

Sample Rating Trend

NORMAL



Area
(C-GZVJ)
 Machine Id
[C-GZVJ] BEEHCRAFT 1900D PCE-114066
 Component
Left Filter
 Fluid
BP TURBO OIL 2380 (14 GAL)



DIAGNOSIS

Recommendation
 Resample at the next service interval to monitor.

Wear Particles
 The filter contained no appreciable wear particles. All filter wear levels are normal.

Contaminants
 The filter contained only normal levels of contaminants, and debris. All filter contaminant levels are normal.

SAMPLE INFORMATION

method	limit/base	current	history1	history2
Sample Number	Client Info	WC0762811	---	---
Sample Date	Client Info	08 Feb 2023	---	---
Machine Age	hrs Client Info	22107	---	---
Oil Age	hrs Client Info	1573	---	---
Oil Changed	Client Info	N/A	---	---
Sample Status		NORMAL	---	---

CONTAMINATION

method	limit/base	current	history1	history2
Water	WC Method	NEG	---	---

FILTER WEAR PARTICLES

method	limit/base	current	history1	history2
Ferrous Rubbing	Scale 0-10 ASTM D7684*	1		
Ferrous Sliding	Scale 0-10 ASTM D7684*			
Ferrous Cutting	Scale 0-10 ASTM D7684*			
Ferrous Rolling	Scale 0-10 ASTM D7684*			
Ferrous Break-in	Scale 0-10 ASTM D7684*			
Ferrous Spheres	Scale 0-10 ASTM D7684*			
Ferrous Black Oxides	Scale 0-10 ASTM D7684*			
Ferrous Red Oxides	Scale 0-10 ASTM D7684*			
Ferrous Corrosive	Scale 0-10 ASTM D7684*			
Ferrous Other	Scale 0-10 ASTM D7684*			
Nonferrous Rubbing	Scale 0-10 ASTM D7684*			
Nonferrous Sliding	Scale 0-10 ASTM D7684*			
Nonferrous Cutting	Scale 0-10 ASTM D7684*			
Nonferrous Rolling	Scale 0-10 ASTM D7684*	1		
Nonferrous Other	Scale 0-10 ASTM D7684*			

FILTER CONTAMINANTS

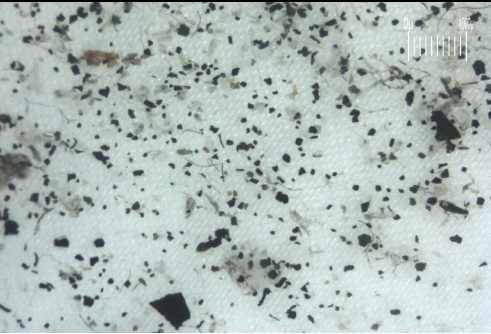
method	limit/base	current	history1	history2
Sand/Dirt	Scale 0-10 ASTM D7684*	2		
Fibres	Scale 0-10 ASTM D7684*	1		
Spheres	Scale 0-10 ASTM D7684*			
Other	Scale 0-10 ASTM D7684*			
Patch Weight	mg ASTM D7684*	N/A	---	---

SAMPLE IMAGES

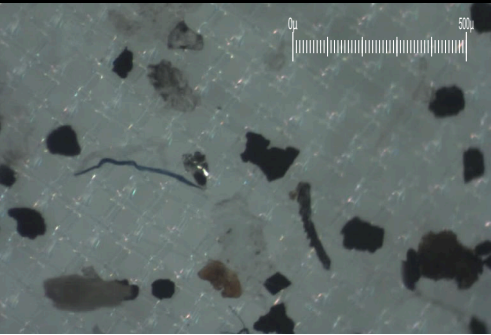
method	limit/base	current	history1	history2
Color			<i>no image</i>	<i>no image</i>
Bottom			<i>no image</i>	<i>no image</i>

Area
(C-GZVJ)
Machine Id
[C-GZVJ] BEEHCRAFT 1900D PCE-114066
Component
Left Filter
Fluid
BP TURBO OIL 2380 (14 GAL)

Magn: 10x Illum: RW



Magn: 60x Illum: RW



WEAR

The filter contained no appreciable wear particles. All filter wear levels are normal.