

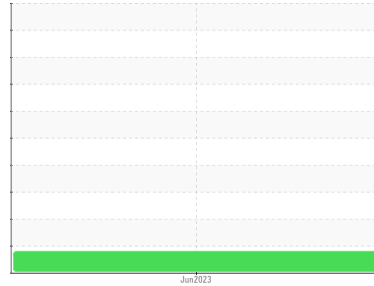


FILTER DEBRIS ANALYSIS

Sample Rating Trend

CONTAMINANT

Area
(C-GION) [W119195]
 Machine Id
[C-GION] 2262
 Component
Filter
 Fluid
NOT GIVEN (--- LTR)



DIAGNOSIS

Recommendation

A sample of material (sludge) removed from the fuel pump was sent for analysis.

Wear Particles

{not applicable}

Contaminants

There was insufficient material to perform any significant testing, however, the material appears to be shellac like, which would indicate the possibility of coking or varnish baking onto the pump possibly from asphaltene present in the fuel.

SAMPLE INFORMATION

method	limit/base	current	history1	history2
Sample Number	Client Info	PP	---	---
Sample Date	Client Info	14 Jun 2023	---	---
Machine Age	hrs Client Info	0	---	---
Oil Age	hrs Client Info	0	---	---
Oil Changed	Client Info	N/A	---	---
Sample Status		ABNORMAL	---	---

FILTER WEAR PARTICLES

method	limit/base	current	history1	history2
Ferrous Rubbing	Scale 0-10 ASTM D7684*			
Ferrous Sliding	Scale 0-10 ASTM D7684*			
Ferrous Cutting	Scale 0-10 ASTM D7684*			
Ferrous Rolling	Scale 0-10 ASTM D7684*			
Ferrous Break-in	Scale 0-10 ASTM D7684*			
Ferrous Spheres	Scale 0-10 ASTM D7684*			
Ferrous Black Oxides	Scale 0-10 ASTM D7684*			
Ferrous Red Oxides	Scale 0-10 ASTM D7684*			
Ferrous Corrosive	Scale 0-10 ASTM D7684*			
Ferrous Other	Scale 0-10 ASTM D7684*			
Nonferrous Rubbing	Scale 0-10 ASTM D7684*			
Nonferrous Sliding	Scale 0-10 ASTM D7684*			
Nonferrous Cutting	Scale 0-10 ASTM D7684*			
Nonferrous Rolling	Scale 0-10 ASTM D7684*	1		
Nonferrous Other	Scale 0-10 ASTM D7684*			

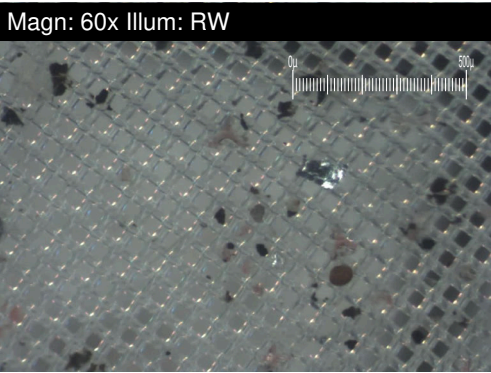
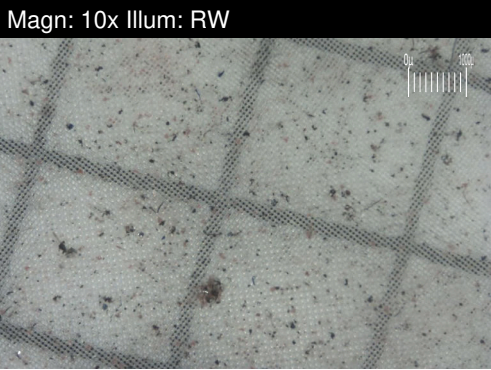
FILTER CONTAMINANTS

method	limit/base	current	history1	history2
Sand/Dirt	Scale 0-10 ASTM D7684*	1		
Fibres	Scale 0-10 ASTM D7684*	1		
Spheres	Scale 0-10 ASTM D7684*			
Other	Scale 0-10 ASTM D7684*	3		
Patch Weight	mg ASTM D7684*	N/A	---	---

SAMPLE IMAGES

method	limit/base	current	history1	history2
Color			no image	no image
Bottom			no image	no image

Area
(C-GION) [W119195]
Machine Id
[C-GION] 2262
Component
Filter
Fluid
NOT GIVEN (--- LTR)



WEAR

{not applicable}