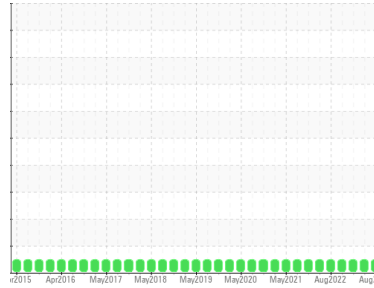




# OIL ANALYSIS REPORT

Sample Rating Trend

**NORMAL**



Machine Id  
**C26184B 4B DVZ**

Component  
**Gearbox**  
Fluid

**PETRO CANADA PURITY FG SYN GEAR ISO 220 (5 LTR)**

## DIAGNOSIS

### Recommendation

Resample at the next service interval to monitor.

### Wear

All component wear rates are normal.

### Contamination

There is no indication of any contamination in the oil.

### Fluid Condition

The AN level is acceptable for this fluid. The condition of the oil is suitable for further service.

## SAMPLE INFORMATION

	method	limit/base	current	history1	history2
Sample Number	Client Info		<b>WC0731705</b>	WC0731727	WC
Sample Date	Client Info		<b>05 Aug 2023</b>	01 May 2023	31 Jan 2023
Machine Age	days	Client Info	<b>0</b>	0	0
Oil Age	days	Client Info	<b>0</b>	0	0
Oil Changed	Client Info		<b>N/A</b>	N/A	N/A
Sample Status			<b>NORMAL</b>	NORMAL	NORMAL

## WEAR METALS

	method	limit/base	current	history1	history2
PQ	ASTM D8184*		<b>26</b>	14	16
Iron	ppm	ASTM D5185(m) >200	<b>133</b>	102	113
Chromium	ppm	ASTM D5185(m) >15	<b>&lt;1</b>	<1	<1
Nickel	ppm	ASTM D5185(m) >15	<b>0</b>	<1	0
Titanium	ppm	ASTM D5185(m)	<b>0</b>	0	0
Silver	ppm	ASTM D5185(m)	<b>0</b>	0	0
Aluminum	ppm	ASTM D5185(m) >25	<b>0</b>	<1	<1
Lead	ppm	ASTM D5185(m) >100	<b>0</b>	<1	0
Copper	ppm	ASTM D5185(m) >200	<b>&lt;1</b>	<1	<1
Tin	ppm	ASTM D5185(m) >25	<b>0</b>	0	0
Antimony	ppm	ASTM D5185(m) >5	<b>0</b>	0	<1
Vanadium	ppm	ASTM D5185(m)	<b>0</b>	0	0
Beryllium	ppm	ASTM D5185(m)	<b>0</b>	0	0
Cadmium	ppm	ASTM D5185(m)	<b>0</b>	0	0

## ADDITIVES

	method	limit/base	current	history1	history2
Boron	ppm	ASTM D5185(m)	<b>2</b>	3	3
Barium	ppm	ASTM D5185(m)	<b>0</b>	0	0
Molybdenum	ppm	ASTM D5185(m)	<b>0</b>	0	0
Manganese	ppm	ASTM D5185(m)	<b>&lt;1</b>	<1	<1
Magnesium	ppm	ASTM D5185(m)	<b>0</b>	0	0
Calcium	ppm	ASTM D5185(m)	<b>2</b>	<1	<1
Phosphorus	ppm	ASTM D5185(m)	<b>557</b>	560	554
Zinc	ppm	ASTM D5185(m)	<b>4</b>	4	4
Sulfur	ppm	ASTM D5185(m)	<b>529</b>	624	593
Lithium	ppm	ASTM D5185(m)	<b>&lt;1</b>	<1	<1

## CONTAMINANTS

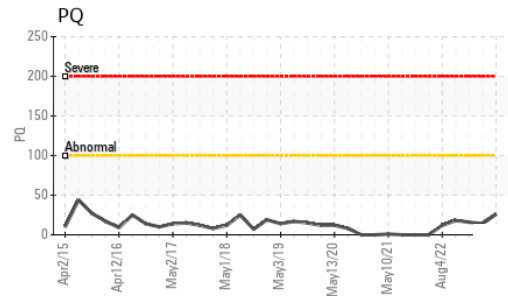
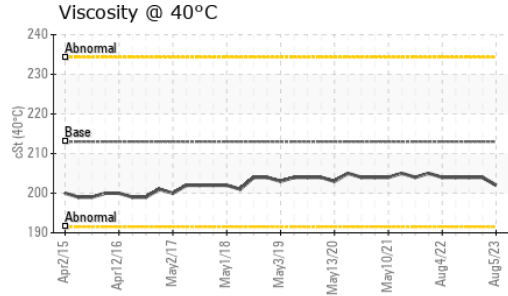
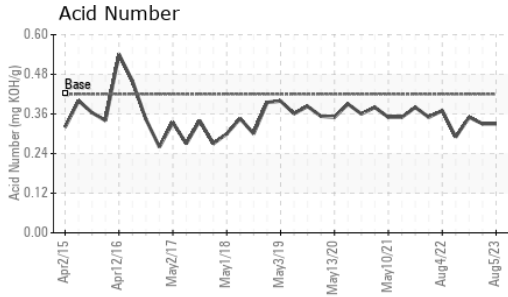
	method	limit/base	current	history1	history2
Silicon	ppm	ASTM D5185(m) >50	<b>30</b>	29	29
Sodium	ppm	ASTM D5185(m)	<b>&lt;1</b>	0	0
Potassium	ppm	ASTM D5185(m) >20	<b>&lt;1</b>	<1	<1

## FLUID DEGRADATION

	method	limit/base	current	history1	history2
Acid Number (AN)	mg KOH/g	ASTM D974* 0.42	<b>0.33</b>	0.33	0.35



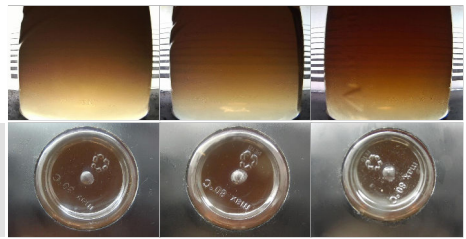
# OIL ANALYSIS REPORT



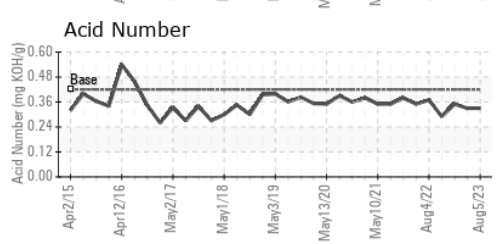
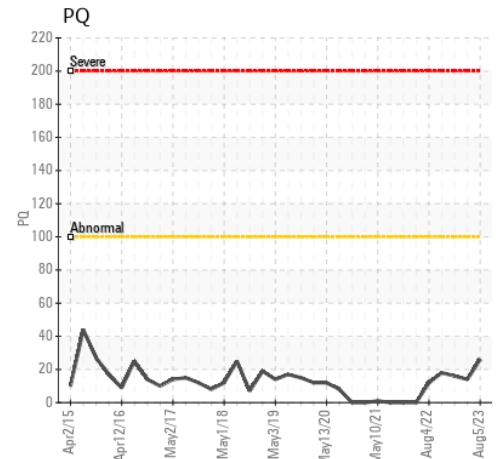
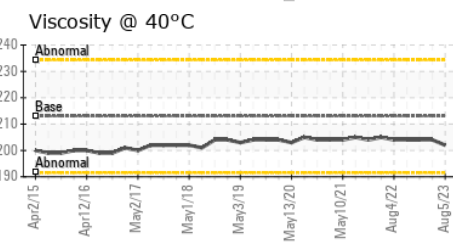
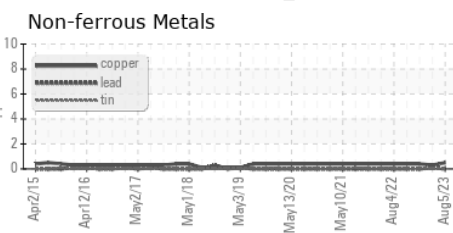
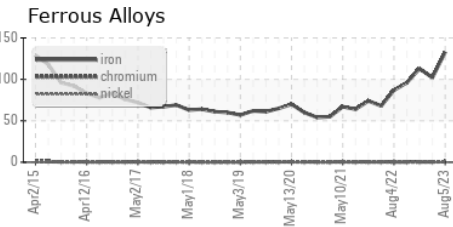
VISUAL	method	limit/base	current	history1	history2
White Metal	scalar	Visual*	NONE	NONE	NONE
Yellow Metal	scalar	Visual*	NONE	NONE	NONE
Precipitate	scalar	Visual*	NONE	NONE	NONE
Silt	scalar	Visual*	NONE	NONE	NONE
Debris	scalar	Visual*	NONE	NONE	NONE
Sand/Dirt	scalar	Visual*	NONE	NONE	NONE
Appearance	scalar	Visual*	NORML	NORML	NORML
Odor	scalar	Visual*	NORML	NORML	NORML
Emulsified Water	scalar	Visual*	>0.2	NEG	NEG
Free Water	scalar	Visual*		NEG	NEG

FLUID PROPERTIES	method	limit/base	current	history1	history2
Visc @ 40°C	cSt	ASTM D7279(m)	213	202	204

SAMPLE IMAGES	method	limit/base	current	history1	history2
Color					
Bottom					



## GRAPHS



**Laboratory** : WearCheck - C8-1175 Appleby Line, Burlington, ON L7L 5H9  
**Sample No.** : WC0731705 **Received** : 09 Aug 2023  
**Lab Number** : 02574960 **Diagnosed** : 10 Aug 2023  
**Unique Number** : 5620011 **Diagnostician** : Wes Davis  
**Test Package** : IND 2 ( Additional Tests: TAN Man )

**INGREDION INC**  
 4040 JAMES STREET  
 CARDINAL, ON  
 CA K0E 1E0  
 Contact: James Byers  
 james.byers@ingredion.com  
 T: (613)657-3131  
 F: (613)657-1955

To discuss this sample report, contact Customer Service at 1-800-268-2131.  
 Test denoted (\*) outside scope of accreditation, (m) method modified, (e) tested at external lab.  
 Validity of results and interpretation are based on the sample and information as supplied.