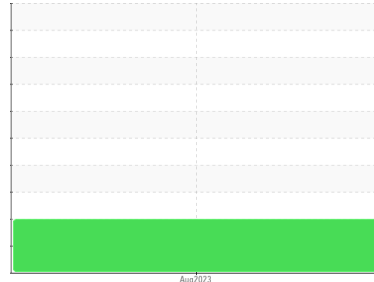




FUEL REPORT

Sample Rating Trend



ISO



Area
[61003]
 Machine Id
1GL1407

Component
Diesel Fuel
 Fluid
No.2 DIESEL FUEL (ULTRALOW SULPHUR) (--- GAL)

DIAGNOSIS

Recommendation

We advise that you filter this fluid before use. We recommend you service the filters on this component. We recommend an early resample to monitor this condition.

Corrosion

{not applicable}

Contaminants

There is a moderate amount of silt (particulates < 14 microns in size) present in the fuel. The water content is negligible. NOTE: The sample was not layered and no water was present, DEF could not be detected in fuel.

Fuel Condition

Final Boiling Point results are abnormally high. The fuel is still serviceable provided that the contaminant(s) can be reduced to acceptable levels.

SAMPLE INFORMATION		method	limit/base	current	history1	history2
Sample Number	Client Info			WC0831180	---	---
Sample Date	Client Info			08 Aug 2023	---	---
Machine Age	hrs	Client Info		0	---	---
Sample Status				ABNORMAL	---	---

PHYSICAL PROPERTIES		method	limit/base	current	history1	history2
Specific Gravity		ASTM D1298*	0.839	0.840	---	---
Fuel Color	text	Visual Screen*	Yellow	Yellow	---	---
Visc @ 40°C	cSt	ASTM D7279(m)	3.0	2.7	---	---
Pensky-Martens Flash Point	°C	ASTM D7215*	52	64.3	---	---

SULFUR CONTENT		method	limit/base	current	history1	history2
Sulfur	ppm	ASTM D5185(m)	10	8	---	---

DISTILLATION		method	limit/base	current	history1	history2
Initial Boiling Point	°C	ASTM D2887*	165	176	---	---
5% Distillation Point	°C	ASTM D2887*		202	---	---
10% Distill Point	°C	ASTM D2887*	201	212	---	---
15% Distillation Point	°C	ASTM D2887*		221	---	---
20% Distill Point	°C	ASTM D2887*	216	229	---	---
30% Distill Point	°C	ASTM D2887*	230	246	---	---
40% Distill Point	°C	ASTM D2887*	243	263	---	---
50% Distill Point	°C	ASTM D2887*	255	279	---	---
60% Distill Point	°C	ASTM D2887*	267	297	---	---
70% Distill Point	°C	ASTM D2887*	280	315	---	---
80% Distill Point	°C	ASTM D2887*	295	327	---	---
85% Distillation Point	°C	ASTM D2887*		332	---	---
90% Distill Point	°C	ASTM D2887*	310	337	---	---
95% Distillation Point	°C	ASTM D2887*		344	---	---
Final Boiling Point	°C	ASTM D2887*	341	361	---	---

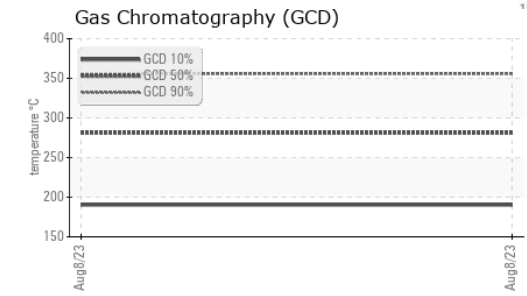
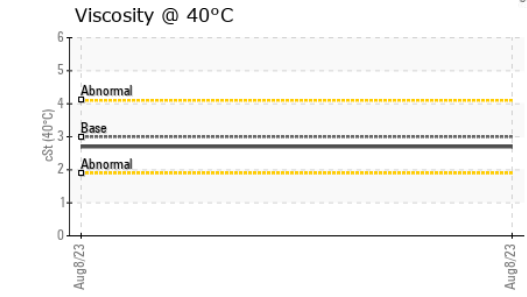
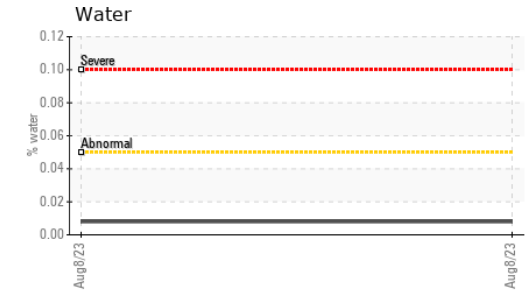
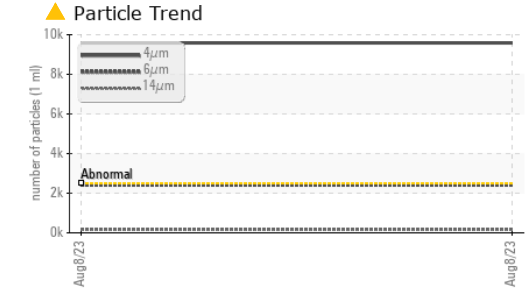
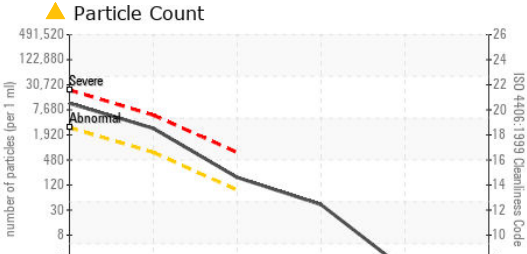
IGNITION QUALITY		method	limit/base	current	history1	history2
API Gravity		ASTM D1298*	37.7	36	---	---
Cetane Index		ASTM D4737*	<40.0	52	---	---

CONTAMINANTS		method	limit/base	current	history1	history2
Silicon	ppm	ASTM D5185(m)	<1.0	0	---	---
Sodium	ppm	ASTM D5185(m)	<0.1	0	---	---
Potassium	ppm	ASTM D5185(m)	<0.1	<1	---	---
Water	%	ASTM D6304*	<0.05	0.008	---	---
ppm Water	ppm	ASTM D6304*	<500	82.4	---	---

FLUID CLEANLINESS		method	limit/base	current	history1	history2
Particles >4µm		ASTM D7647	>2500	▲ 9586	---	---
Particles >6µm		ASTM D7647	>640	▲ 2411	---	---
Particles >14µm		ASTM D7647	>80	▲ 161	---	---
Particles >21µm		ASTM D7647	>20	▲ 36	---	---
Particles >38µm		ASTM D7647	>4	1	---	---
Particles >71µm		ASTM D7647	>3	0	---	---
Oil Cleanliness		ISO 4406 (c)	>18/16/13	▲ 20/18/15	---	---



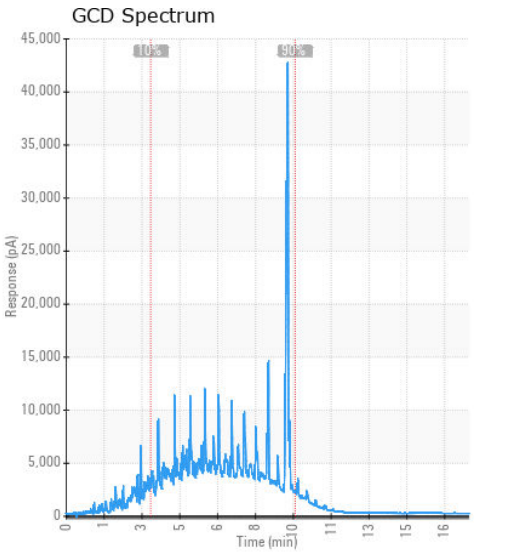
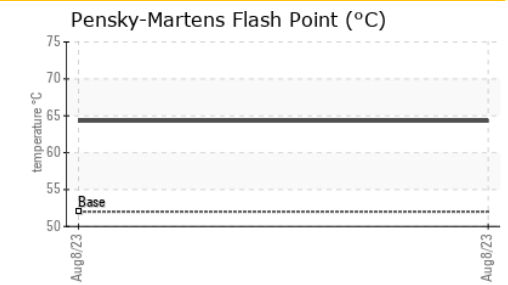
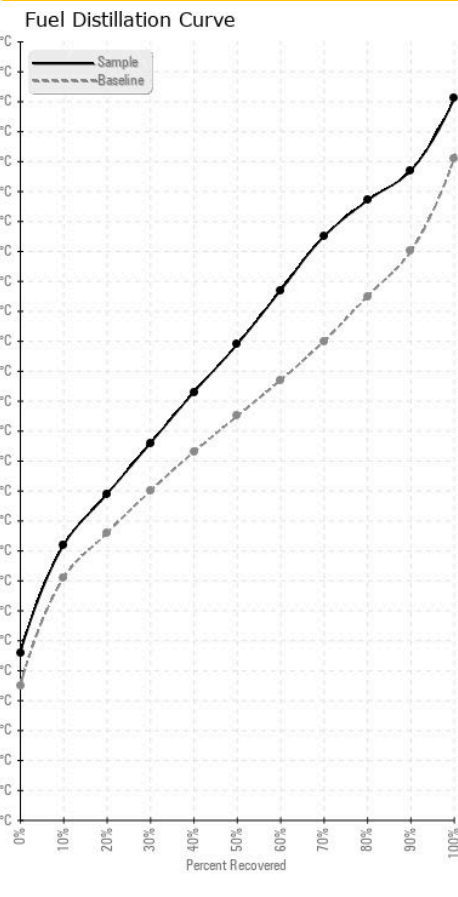
FUEL REPORT



HEAVY METALS	method	limit/base	current	history1	history2
Aluminum	ppm	ASTM D5185(m)	<0.1	0	---
Nickel	ppm	ASTM D5185(m)	<0.1	0	---
Lead	ppm	ASTM D5185(m)	<0.1	0	---
Vanadium	ppm	ASTM D5185(m)	<0.1	0	---
Iron	ppm	ASTM D5185(m)	<0.1	<1	---
Calcium	ppm	ASTM D5185(m)	<0.1	<1	---
Magnesium	ppm	ASTM D5185(m)	<0.1	0	---
Phosphorus	ppm	ASTM D5185(m)	<0.1	0	---
Zinc	ppm	ASTM D5185(m)	<0.1	0	---

SAMPLE IMAGES	method	limit/base	current	history1	history2
Color				no image	no image
Bottom				no image	no image

GRAPHS



Laboratory : WearCheck - C8-1175 Appleby Line, Burlington, ON L7L 5H9 PERFORMANCE EQUIPMENT - VISION TRUCK
Sample No. : WC0831180 **Received** : 09 Aug 2023 415 EVANS AVENUE
Lab Number : 02574987 **Diagnosed** : 10 Aug 2023 ETOBICOKE, ON
Unique Number : 5620038 **Diagnostician** : Kevin Marson CA M8W 0B3
Test Package : FUEL (Additional Tests: CC Flash, GC-PercFuel, PrtCount) Contact: Service
 etobservice@visiontruckgroup.com
 To discuss this sample report, contact Customer Service at 1-800-268-2131. T:
 Test denoted (*) outside scope of accreditation, (m) method modified, (e) tested at external lab. F:
 Validity of results and interpretation are based on the sample and information as supplied.