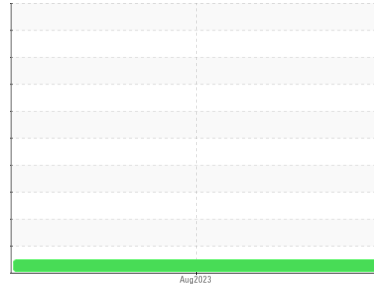




# FUEL REPORT

Sample Rating Trend

**NORMAL**



Machine Id  
**AIRBUS N685TA**  
 Component  
**Right Jet Fuel**  
 Fluid  
**JET FUEL Type A (--- GAL)**

## DIAGNOSIS

### Recommendation

This is a baseline read-out on the submitted sample.

### Wear

{not applicable}

### Contamination

Lab tests confirm no microbial present in the sample. The fuel phase was tested for microbes, as there was no separate water phase present in the sample.

### Fluid Condition

{not applicable}

SAMPLE INFORMATION		method	limit/base	current	history1	history2
Sample Number	Client Info			<b>WC0824760</b>	---	---
Sample Date	Client Info			<b>09 Aug 2023</b>	---	---
Machine Age	hrs	Client Info		<b>0</b>	---	---
Oil Age	hrs	Client Info		<b>0</b>	---	---
Oil Changed	Client Info			<b>N/A</b>	---	---
Sample Status				<b>NORMAL</b>	---	---

PHYSICAL PROPERTIES		method	limit/base	current	history1	history2
Visc @ 40°C	cSt	ASTM D7279(m)	<8.0	<b>1.4</b>	---	---

SULFUR CONTENT		method	limit/base	current	history1	history2
Sulfur	ppm	ASTM D5185(m)	<3000	<b>350</b>	---	---

CONTAMINANTS		method	limit/base	current	history1	history2
Silicon	ppm	ASTM D5185(m)	<1.0	<b>&lt;1</b>	---	---
Sodium	ppm	ASTM D5185(m)	<0.1	<b>&lt;1</b>	---	---
Potassium	ppm	ASTM D5185(m)	<0.1	<b>&lt;1</b>	---	---

MICROBIAL		method	limit/base	current	history1	history2
Microbes	CFU/L	ASTM D6469*	>=100000	<b>0</b>	---	---

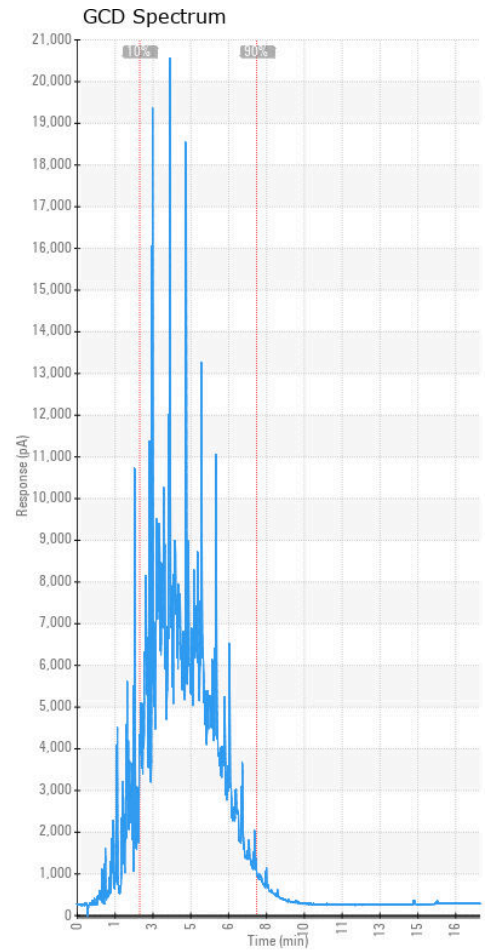
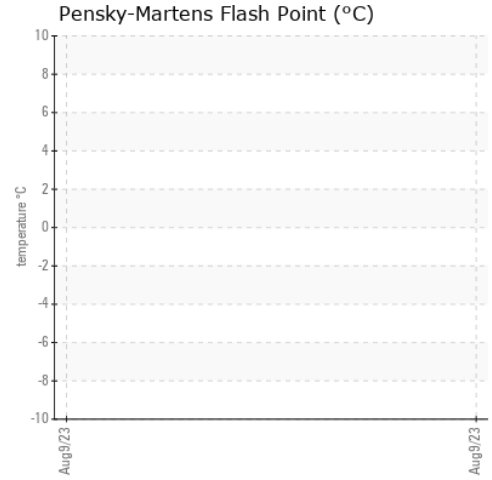
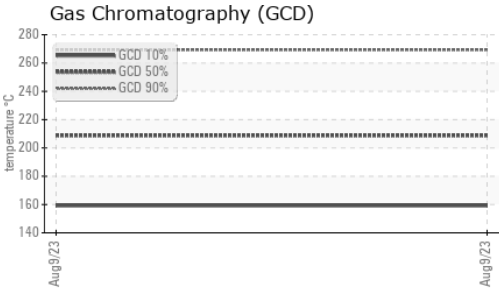
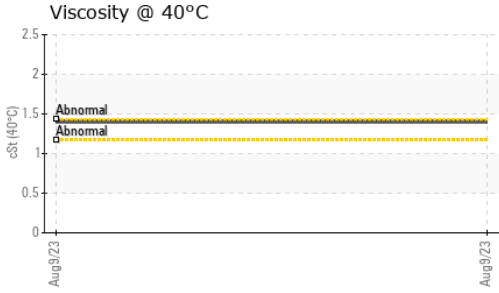
HEAVY METALS		method	limit/base	current	history1	history2
Aluminum	ppm	ASTM D5185(m)	<0.1	<b>0</b>	---	---
Nickel	ppm	ASTM D5185(m)	<0.1	<b>0</b>	---	---
Lead	ppm	ASTM D5185(m)	<0.1	<b>0</b>	---	---
Vanadium	ppm	ASTM D5185(m)	<0.1	<b>0</b>	---	---
Iron	ppm	ASTM D5185(m)	<0.1	<b>&lt;1</b>	---	---
Calcium	ppm	ASTM D5185(m)	<0.1	<b>0</b>	---	---
Magnesium	ppm	ASTM D5185(m)	<0.1	<b>0</b>	---	---
Phosphorus	ppm	ASTM D5185(m)	<0.1	<b>0</b>	---	---
Zinc	ppm	ASTM D5185(m)	<0.1	<b>0</b>	---	---

SAMPLE IMAGES		method	limit/base	current	history1	history2
Color					no image	no image
Bottom					no image	no image



# FUEL REPORT

## GRAPHS



**Laboratory** : WearCheck - C8-1175 Appleby Line, Burlington, ON L7L 5H9  
**Sample No.** : WC0824760 **Received** : 10 Aug 2023  
**Lab Number** : 02575270 **Diagnosed** : 14 Aug 2023  
**Unique Number** : 5620321 **Diagnostician** : Kevin Marson  
**Test Package** : TEST ( Additional Tests: GC-PercFuel, GCD, ICP, KV40, Microbes, Spat )

**KF Aero**  
 9500 Airport Road  
 Mount Hope, ON  
 CA L0R 1W0  
 Contact: Helen Krzywicki  
 h.krzywicki@kfaero.ca  
 T: (905)679-3313  
 F: (905)679-4921

To discuss this sample report, contact Customer Service at 1-800-268-2131.  
 Test denoted (\*) outside scope of accreditation, (m) method modified, (e) tested at external lab.  
 Validity of results and interpretation are based on the sample and information as supplied.