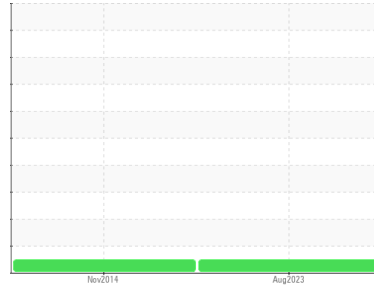




OIL ANALYSIS REPORT

Sample Rating Trend

NORMAL



Machine Id
BROWNING 215 531830 #30 SCREW

Component
Gearbox

Fluid
MOBIL MOBILGEAR SHC 220 (9 LTR)

DIAGNOSIS

Recommendation

Resample at the next service interval to monitor.

Wear

All component wear rates are normal.

Contamination

There is no indication of any contamination in the oil.

Fluid Condition

The AN level is acceptable for this fluid. The condition of the oil is suitable for further service.

SAMPLE INFORMATION		method	limit/base	current	history1	history2
Sample Number	Client Info			WC0750563	WC925167	---
Sample Date	Client Info			09 Aug 2023	05 Nov 2014	---
Machine Age	hrs	Client Info		0	11340	---
Oil Age	hrs	Client Info		0	1222	---
Oil Changed	Client Info			N/A	Not Changd	---
Sample Status				NORMAL	NORMAL	---

WEAR METALS		method	limit/base	current	history1	history2
PQ		ASTM D8184*		108	56	---
Iron	ppm	ASTM D5185(m)	>200	49	47	---
Chromium	ppm	ASTM D5185(m)	>15	<1	<1	---
Nickel	ppm	ASTM D5185(m)	>15	<1	<1	---
Titanium	ppm	ASTM D5185(m)		<1	<1	---
Silver	ppm	ASTM D5185(m)		0	0	---
Aluminum	ppm	ASTM D5185(m)	>25	<1	<1	---
Lead	ppm	ASTM D5185(m)	>100	0	0	---
Copper	ppm	ASTM D5185(m)	>200	<1	<1	---
Tin	ppm	ASTM D5185(m)	>25	0	0	---
Antimony	ppm	ASTM D5185(m)	>5	0	<1	---
Vanadium	ppm	ASTM D5185(m)		0	0	---
Beryllium	ppm	ASTM D5185(m)		0	0	---
Cadmium	ppm	ASTM D5185(m)		0	<1	---

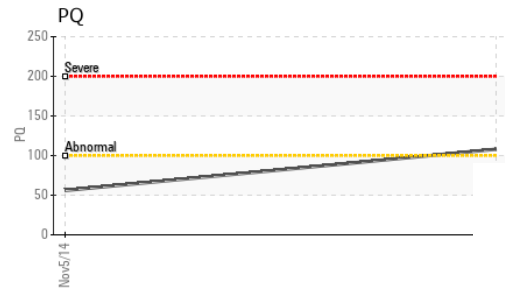
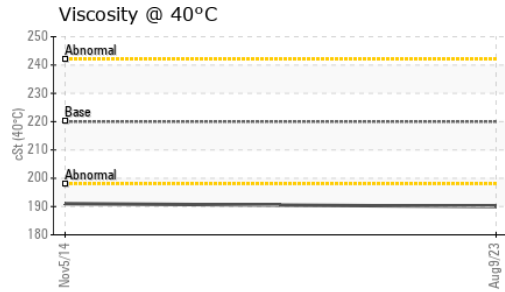
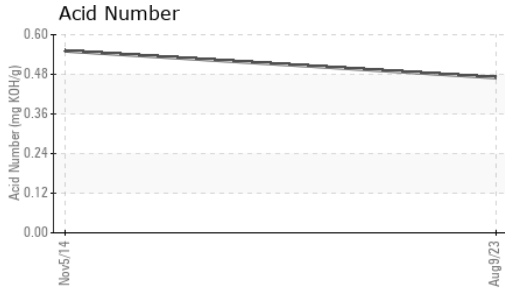
ADDITIVES		method	limit/base	current	history1	history2
Boron	ppm	ASTM D5185(m)		6	9	---
Barium	ppm	ASTM D5185(m)		0	0	---
Molybdenum	ppm	ASTM D5185(m)		0	0	---
Manganese	ppm	ASTM D5185(m)		<1	<1	---
Magnesium	ppm	ASTM D5185(m)		3	3	---
Calcium	ppm	ASTM D5185(m)		77	80	---
Phosphorus	ppm	ASTM D5185(m)		253	232	---
Zinc	ppm	ASTM D5185(m)		2	1	---
Sulfur	ppm	ASTM D5185(m)		3759	4229	---
Lithium	ppm	ASTM D5185(m)		<1	<1	---

CONTAMINANTS		method	limit/base	current	history1	history2
Silicon	ppm	ASTM D5185(m)	>50	64	28	---
Sodium	ppm	ASTM D5185(m)		0	0	---
Potassium	ppm	ASTM D5185(m)	>20	<1	1	---

FLUID DEGRADATION		method	limit/base	current	history1	history2
Acid Number (AN)	mg KOH/g	ASTM D974*		0.47	0.551	---



OIL ANALYSIS REPORT



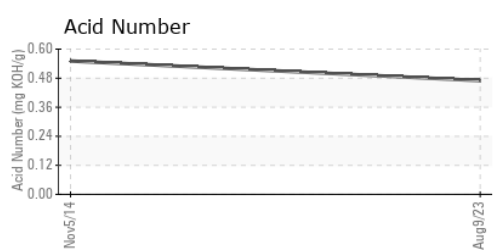
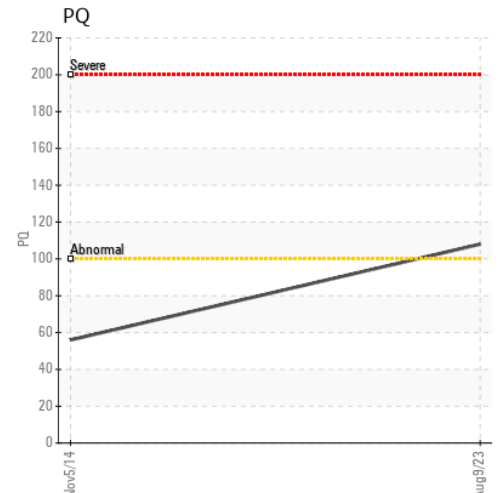
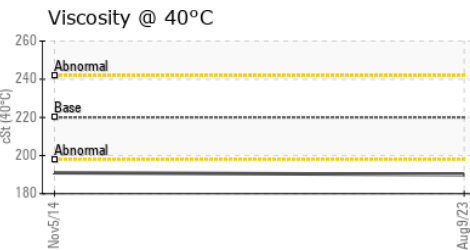
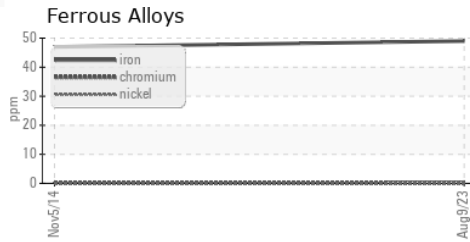
VISUAL	method	limit/base	current	history1	history2
White Metal	scalar	Visual*	NONE	LIGHT	NONE
Yellow Metal	scalar	Visual*	NONE	NONE	NONE
Precipitate	scalar	Visual*	NONE	NONE	NONE
Silt	scalar	Visual*	NONE	NONE	NONE
Debris	scalar	Visual*	NONE	VLITE	LIGHT
Sand/Dirt	scalar	Visual*	NONE	NONE	NONE
Appearance	scalar	Visual*	NORML	NORML	NORML
Odor	scalar	Visual*	NORML	NORML	NORML
Emulsified Water	scalar	Visual*	>0.2	NEG	NEG
Free Water	scalar	Visual*		NEG	NEG

FLUID PROPERTIES	method	limit/base	current	history1	history2
Visc @ 40°C	cSt	ASTM D7279(m)	220	190	191

SAMPLE IMAGES	method	limit/base	current	history1	history2
---------------	--------	------------	---------	----------	----------



GRAPHS



Laboratory : WearCheck - C8-1175 Appleby Line, Burlington, ON L7L 5H9
Sample No. : WC0750563 **Received** : 11 Aug 2023
Lab Number : 02575497 **Diagnosed** : 12 Aug 2023
Unique Number : 5620548 **Diagnostician** : Kevin Marson
Test Package : IND 2 (Additional Tests: TAN Man)

CARMEUSE LIME CANADA LTD.
 BOX 1690., HWY 17 EAST
 BLIND RIVER, ON
 CA P0R 1B0
 Contact: Rejean Baillargeon
 rejean.baillargeon@carmeusena.com
 T: (705)849-2201
 F: (705)849-2355

To discuss this sample report, contact Customer Service at 1-800-268-2131.
 Test denoted (*) outside scope of accreditation, (m) method modified, (e) tested at external lab.
 Validity of results and interpretation are based on the sample and information as supplied.