

# FUEL REPORT

Sample Rating Trend

**NORMAL**



Area  
**[61-183825]**  
Machine Id  
**2X490U-6 (061708)**  
Component  
**Diesel Fuel**  
Fluid  
**No.2 DIESEL FUEL (ULTRALOW SULPHUR) (--- GAL)**



## DIAGNOSIS

### Recommendation

Les tests de laboratoire indiquent que ce carburant peut être utilisé et qu'il répond à toutes les exigences. Échantillonner de nouveau l'équipement au prochain intervalle de vidange afin d'en surveiller la condition.

### Corrosion

(sans objet)

### Contaminants

La propreté du système est acceptable pour votre objectif de propreté ISO 4406. La teneur en eau est négligeable. Il n'y a aucun indice de contamination dans le carburant diesel.

### Fuel Condition

Tous les essais en laboratoire indiquent que cet échantillon satisfait aux spécifications pour le carburant diesel à ultra-faible teneur de soufre No.2 (US EPA/CGSB-3.517-3 type B).

| SAMPLE INFORMATION |             | method      | limit/base | current            | history1 | history2 |
|--------------------|-------------|-------------|------------|--------------------|----------|----------|
| Sample Number      | Client Info |             |            | <b>WA0019220</b>   | ---      | ---      |
| Sample Date        | Client Info |             |            | <b>07 Aug 2023</b> | ---      | ---      |
| Machine Age        | hrs         | Client Info |            | <b>0</b>           | ---      | ---      |
| Sample Status      |             |             |            | <b>NORMAL</b>      | ---      | ---      |

| PHYSICAL PROPERTIES        |      | method         | limit/base | current      | history1 | history2 |
|----------------------------|------|----------------|------------|--------------|----------|----------|
| Specific Gravity           |      | ASTM D1298*    | 0.839      | <b>0.826</b> | ---      | ---      |
| Fuel Color                 | text | Visual Screen* | Yllow      | <b>Yllow</b> | ---      | ---      |
| Visc @ 40°C                | cSt  | ASTM D7279(m)  | 3.0        | <b>2.4</b>   | ---      | ---      |
| Pensky-Martens Flash Point | °C   | ASTM D7215*    | 52         | <b>54.4</b>  | ---      | ---      |

| SULFUR CONTENT |     | method        | limit/base | current  | history1 | history2 |
|----------------|-----|---------------|------------|----------|----------|----------|
| Sulfur         | ppm | ASTM D5185(m) | 10         | <b>7</b> | ---      | ---      |

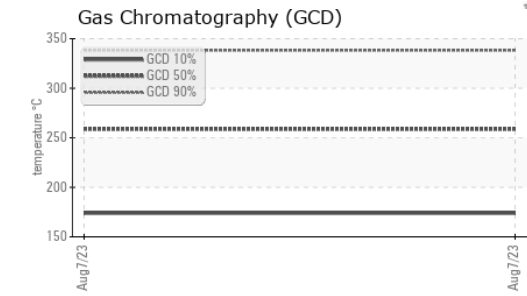
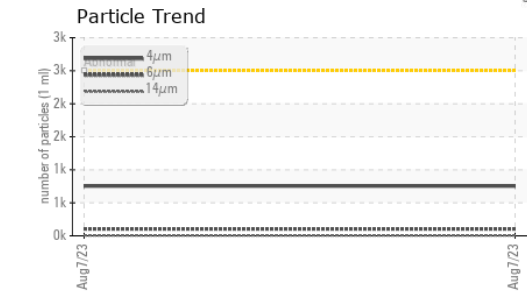
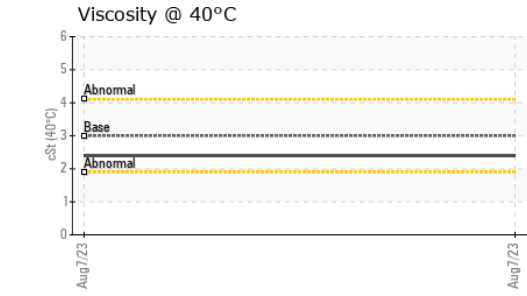
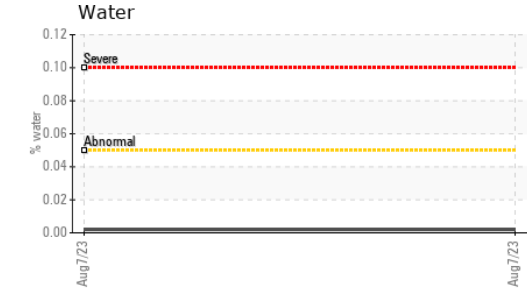
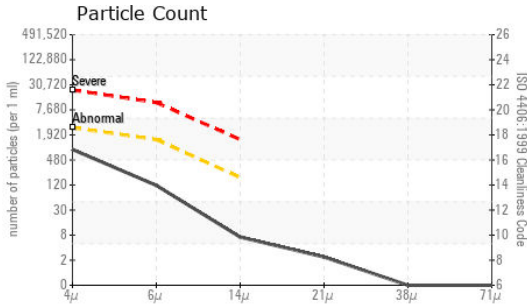
| DISTILLATION           |    | method      | limit/base | current    | history1 | history2 |
|------------------------|----|-------------|------------|------------|----------|----------|
| Initial Boiling Point  | °C | ASTM D2887* | 165        | <b>165</b> | ---      | ---      |
| 5% Distillation Point  | °C | ASTM D2887* |            | <b>186</b> | ---      | ---      |
| 10% Distill Point      | °C | ASTM D2887* | 201        | <b>196</b> | ---      | ---      |
| 15% Distillation Point | °C | ASTM D2887* |            | <b>204</b> | ---      | ---      |
| 20% Distill Point      | °C | ASTM D2887* | 216        | <b>212</b> | ---      | ---      |
| 30% Distill Point      | °C | ASTM D2887* | 230        | <b>227</b> | ---      | ---      |
| 40% Distill Point      | °C | ASTM D2887* | 243        | <b>242</b> | ---      | ---      |
| 50% Distill Point      | °C | ASTM D2887* | 255        | <b>256</b> | ---      | ---      |
| 60% Distill Point      | °C | ASTM D2887* | 267        | <b>270</b> | ---      | ---      |
| 70% Distill Point      | °C | ASTM D2887* | 280        | <b>284</b> | ---      | ---      |
| 80% Distill Point      | °C | ASTM D2887* | 295        | <b>298</b> | ---      | ---      |
| 85% Distillation Point | °C | ASTM D2887* |            | <b>309</b> | ---      | ---      |
| 90% Distill Point      | °C | ASTM D2887* | 310        | <b>321</b> | ---      | ---      |
| 95% Distillation Point | °C | ASTM D2887* |            | <b>342</b> | ---      | ---      |
| Final Boiling Point    | °C | ASTM D2887* | 341        | <b>371</b> | ---      | ---      |

| IGNITION QUALITY |  | method      | limit/base | current   | history1 | history2 |
|------------------|--|-------------|------------|-----------|----------|----------|
| API Gravity      |  | ASTM D1298* | 37.7       | <b>39</b> | ---      | ---      |
| Cetane Index     |  | ASTM D4737* | <40.0      | <b>52</b> | ---      | ---      |

| CONTAMINANTS |     | method        | limit/base | current      | history1 | history2 |
|--------------|-----|---------------|------------|--------------|----------|----------|
| Silicon      | ppm | ASTM D5185(m) | <1.0       | <b>0</b>     | ---      | ---      |
| Sodium       | ppm | ASTM D5185(m) | <0.1       | <b>&lt;1</b> | ---      | ---      |
| Potassium    | ppm | ASTM D5185(m) | <0.1       | <b>0</b>     | ---      | ---      |
| Water        | %   | ASTM D6304*   | <0.05      | <b>0.002</b> | ---      | ---      |
| ppm Water    | ppm | ASTM D6304*   | <500       | <b>19.0</b>  | ---      | ---      |

| FLUID CLEANLINESS |  | method       | limit/base | current         | history1 | history2 |
|-------------------|--|--------------|------------|-----------------|----------|----------|
| Particles >4µm    |  | ASTM D7647   | >2500      | <b>753</b>      | ---      | ---      |
| Particles >6µm    |  | ASTM D7647   | >1300      | <b>104</b>      | ---      | ---      |
| Particles >14µm   |  | ASTM D7647   | >160       | <b>6</b>        | ---      | ---      |
| Particles >21µm   |  | ASTM D7647   | >40        | <b>2</b>        | ---      | ---      |
| Particles >38µm   |  | ASTM D7647   | >10        | <b>0</b>        | ---      | ---      |
| Particles >71µm   |  | ASTM D7647   | >3         | <b>0</b>        | ---      | ---      |
| Oil Cleanliness   |  | ISO 4406 (c) | >18/17/14  | <b>17/14/10</b> | ---      | ---      |

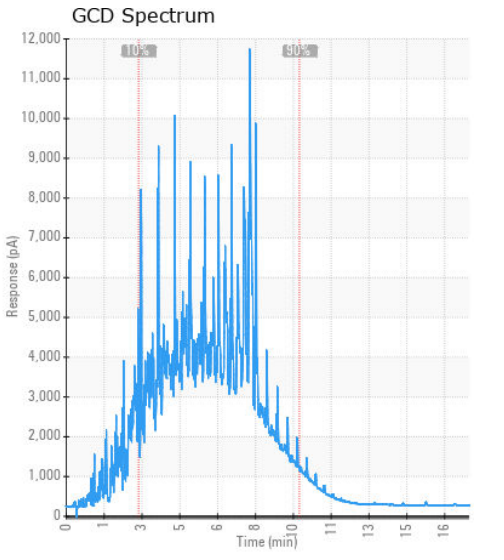
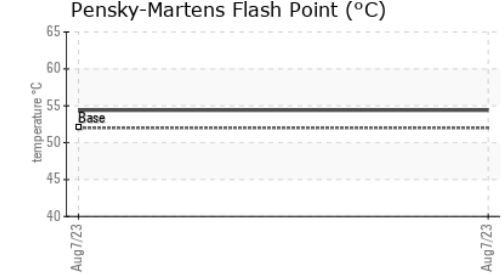
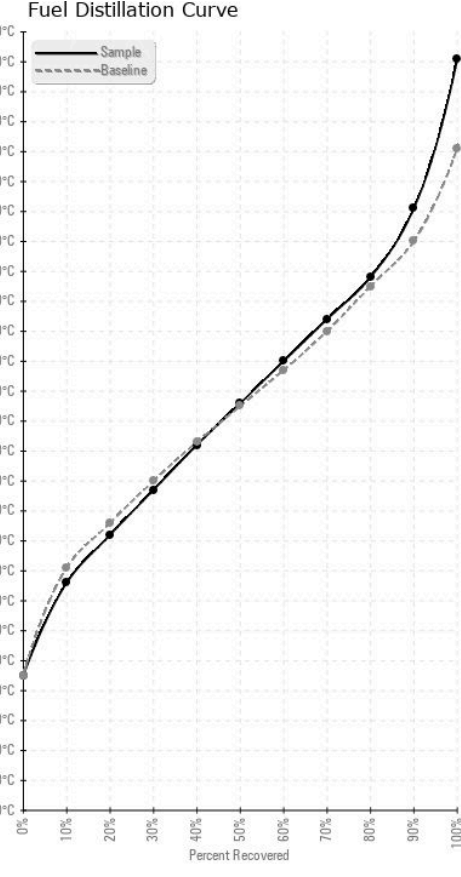
# FUEL REPORT



| HEAVY METALS | method | limit/base    | current | history1 | history2 |
|--------------|--------|---------------|---------|----------|----------|
| Aluminum     | ppm    | ASTM D5185(m) | <0.1    | 0        | ---      |
| Nickel       | ppm    | ASTM D5185(m) | <0.1    | 0        | ---      |
| Lead         | ppm    | ASTM D5185(m) | <0.1    | 0        | ---      |
| Vanadium     | ppm    | ASTM D5185(m) | <0.1    | 0        | ---      |
| Iron         | ppm    | ASTM D5185(m) | <0.1    | <1       | ---      |
| Calcium      | ppm    | ASTM D5185(m) | <0.1    | 0        | ---      |
| Magnesium    | ppm    | ASTM D5185(m) | <0.1    | 0        | ---      |
| Phosphorus   | ppm    | ASTM D5185(m) | <0.1    | 0        | ---      |
| Zinc         | ppm    | ASTM D5185(m) | <0.1    | 0        | ---      |

| SAMPLE IMAGES | method | limit/base | current | history1 | history2 |
|---------------|--------|------------|---------|----------|----------|
| Color         |        |            |         | no image | no image |
| Bottom        |        |            |         | no image | no image |

## GRAPHS



**Laboratory** : WearCheck - C8-1175 Appleby Line, Burlington, ON L7L 5H9  
**Sample No.** : WA0019220 **Received** : 11 Aug 2023  
**Lab Number** : 02575526 **Diagnosed** : 14 Aug 2023  
**Unique Number** : 5620577 **Diagnostician** : Kevin Marson  
**Test Package** : FUEL ( Additional Tests: CC Flash, GC-PercFuel, PrtCount )

**Wajax Power Systems**  
 1080 Rue Jules-Brisebois  
 Val D'Or, QC  
 CA J9P 6X4  
 Contact: Louis Journeault  
 ljourneault@wajax.com  
 T: (819)874-2552  
 F: (819)874-8995

To discuss this sample report, contact Customer Service at 1-800-268-2131.  
 Test denoted (\*) outside scope of accreditation, (m) method modified, (e) tested at external lab.  
 Validity of results and interpretation are based on the sample and information as supplied.