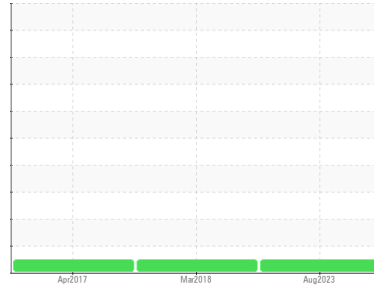




# OIL ANALYSIS REPORT

Sample Rating Trend



**NORMAL**



Machine Id  
**BEECHCRAFT C-GTGA**  
 Component  
**Right Jet Turbine**  
 Fluid  
**EASTMAN TURBO OIL 2380 (13 QTS)**

## DIAGNOSIS

### Recommendation

Resample at the next service interval to monitor.

### Wear

All component wear rates are normal. The direct-reading & analytical ferrographic results are normal indicating no abnormal wear in the system.

### Contaminants

The water content is negligible. There is no indication of any contamination in the oil.

### Oil Condition

The AN level is acceptable for this fluid. The condition of the oil is suitable for further service.

## SAMPLE INFORMATION

	method	limit/base	current	history1	history2
Sample Number	Client Info		<b>WC0766978</b>	WC846774	WC846766
Sample Date	Client Info		<b>13 Aug 2023</b>	27 Mar 2018	18 Apr 2017
TSN	hrs	Client Info	<b>0</b>	34782	0
TSO	hrs	Client Info	<b>0</b>	34782	0
Oil Age	hrs	Client Info	<b>0</b>	0	0
Oil Changed		Client Info	<b>N/A</b>	N/A	N/A
Sample Status			<b>NORMAL</b>	NORMAL	NORMAL

## WEAR METALS

	method	limit/base	current	history1	history2
Iron	ppm	ASTM D5185(m) >8	<b>0</b>	0	0
Chromium	ppm	ASTM D5185(m) >2	<b>0</b>	0	0
Nickel	ppm	ASTM D5185(m) >2	<b>0</b>	<1	0
Titanium	ppm	ASTM D5185(m) >2	<b>0</b>	0	0
Silver	ppm	ASTM D5185(m) >2	<b>0</b>	0	0
Aluminum	ppm	ASTM D5185(m) >2	<b>&lt;1</b>	0	0
Lead	ppm	ASTM D5185(m) >3	<b>0</b>	0	0
Copper	ppm	ASTM D5185(m) >3	<b>0</b>	0	0
Tin	ppm	ASTM D5185(m) >2	<b>0</b>	0	0
Antimony	ppm	ASTM D5185(m)	<b>0</b>	<1	<1
Vanadium	ppm	ASTM D5185(m)	<b>0</b>	0	0
Beryllium	ppm	ASTM D5185(m)	<b>0</b>	0	0
Cadmium	ppm	ASTM D5185(m)	<b>0</b>	0	0

## ADDITIVES

	method	limit/base	current	history1	history2
Boron	ppm	ASTM D5185(m) 0	<b>&lt;1</b>	<1	0
Barium	ppm	ASTM D5185(m) 0	<b>0</b>	0	0
Molybdenum	ppm	ASTM D5185(m) 0	<b>0</b>	0	0
Manganese	ppm	ASTM D5185(m)	<b>0</b>	0	0
Magnesium	ppm	ASTM D5185(m) 0	<b>0</b>	<1	0
Calcium	ppm	ASTM D5185(m) 0	<b>&lt;1</b>	0	0
Phosphorus	ppm	ASTM D5185(m) 2500	<b>2695</b>	2846	2833
Zinc	ppm	ASTM D5185(m) 0	<b>1</b>	<1	<1
Sulfur	ppm	ASTM D5185(m) 0	<b>3</b>	4	38
Lithium	ppm	ASTM D5185(m)	<b>&lt;1</b>	<1	<1

## CONTAMINANTS

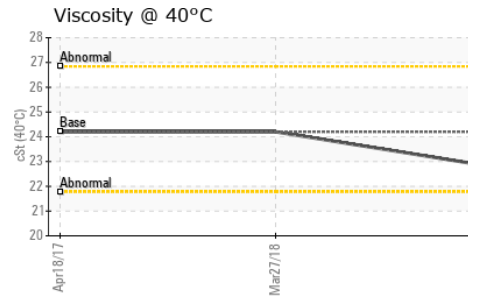
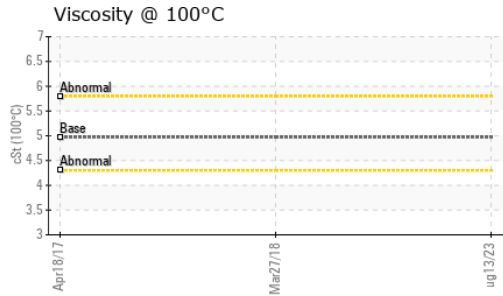
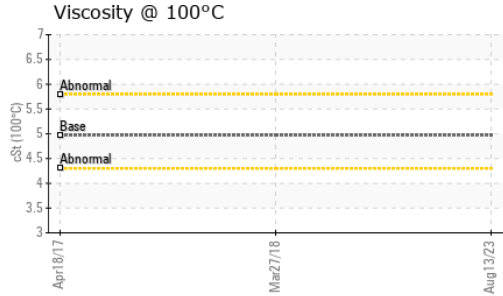
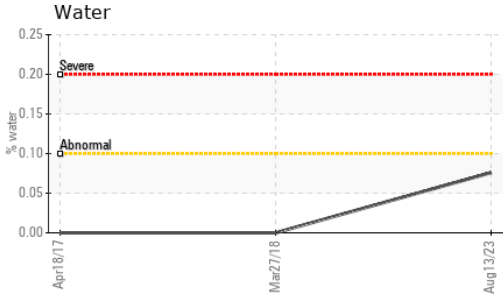
	method	limit/base	current	history1	history2
Silicon	ppm	ASTM D5185(m) >8	<b>0</b>	<1	0
Sodium	ppm	ASTM D5185(m)	<b>&lt;1</b>	0	0
Potassium	ppm	ASTM D5185(m) >20	<b>&lt;1</b>	<1	<1
Water	%	ASTM D6304* >0.1	<b>0.076</b>	---	---
ppm Water	ppm	ASTM D6304* >1000	<b>764.3</b>	---	---

## FLUID DEGRADATION

	method	limit/base	current	history1	history2
Acid Number (AN)	mg KOH/g	ASTM D974* 0.43	<b>0.31</b>	0.271	0.305



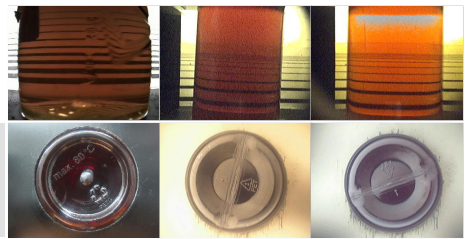
# OIL ANALYSIS REPORT



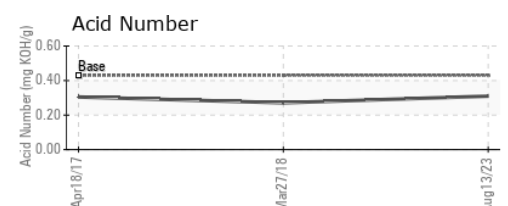
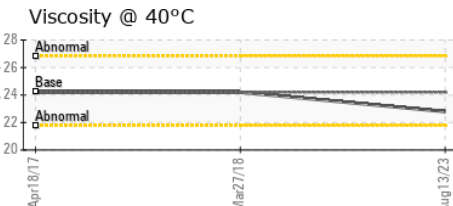
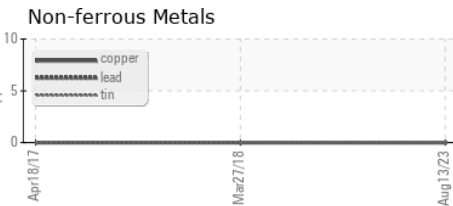
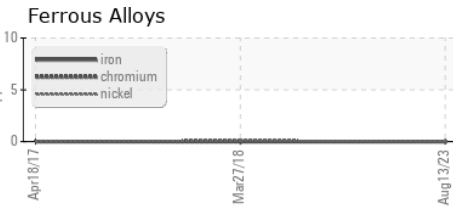
VISUAL	method	limit/base	current	history1	history2
White Metal	scalar	Visual*	NONE	NONE	NONE
Yellow Metal	scalar	Visual*	NONE	NONE	NONE
Precipitate	scalar	Visual*	NONE	NONE	NONE
Silt	scalar	Visual*	NONE	NONE	NONE
Debris	scalar	Visual*	NONE	NONE	VLITE
Sand/Dirt	scalar	Visual*	NONE	NONE	NONE
Appearance	scalar	Visual*	NORML	NORML	NORML
Odor	scalar	Visual*	NORML	NORML	NORML
Emulsified Water	scalar	Visual*	>0.1	NEG	NEG
Free Water	scalar	Visual*		NEG	NEG

FLUID PROPERTIES	method	limit/base	current	history1	history2
Visc @ 40°C	cSt	ASTM D7279(m)	24.2	22.8	24.2
Visc @ 100°C	cSt	ASTM D7279(m)	4.97	4.9	---
Viscosity Index (VI)	Scale	ASTM D2270*	134	143	---

SAMPLE IMAGES	method	limit/base	current	history1	history2
Color					
Bottom					



## GRAPHS



**Laboratory** : WearCheck - C8-1175 Appleby Line, Burlington, ON L7L 5H9  
**Sample No.** : WC0766978 **Received** : 16 Aug 2023  
**Lab Number** : 02576323 **Diagnosed** : 18 Aug 2023  
**Unique Number** : 5629383 **Diagnostician** : Kevin Marson  
**Test Package** : AVI 3

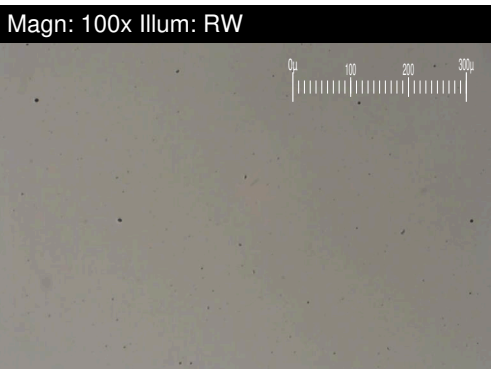
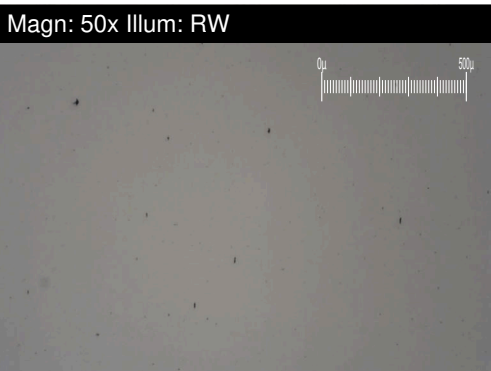
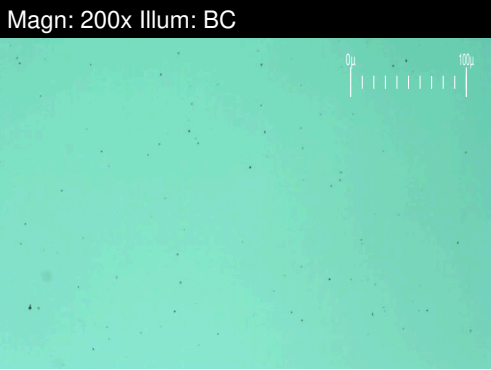
**SKYLINK EXPRESS**  
 9300 AIRPORT ROAD, HANGAR #4  
 MOUNT HOPE, ON  
 CA L0R 1W0  
 Contact: Marc Levesque  
 mlevesque@skylinkexpress.com  
 T: (905)973-2789  
 F: (905)679-4242

To discuss this sample report, contact Customer Service at 1-800-268-2131.  
 Test denoted (\*) outside scope of accreditation, (m) method modified, (e) tested at external lab.  
 Validity of results and interpretation are based on the sample and information as supplied.



# FERROGRAPHY REPORT

Machine Id  
**BEECHCRAFT C-GTGA**  
 Component  
**Right Jet Turbine**  
 Fluid  
**EASTMAN TURBO OIL 2380 (13 QTS)**

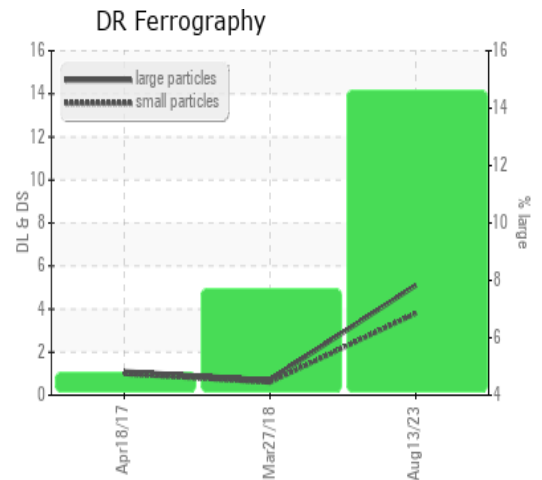


DR-FERROGRAPHY		method	limit/base	current	history1	history2
Large Particles		DR-Ferr*		<b>5.1</b>	0.7	1.1
Small Particles		DR-Ferr*		<b>3.8</b>	0.6	1.0
Total Particles		DR-Ferr*	>---	<b>8.9</b>	1.3	2.1
Large Particles Percentage	%	DR-Ferr*		<b>14.6</b>	7.7	4.8
Severity Index		DR-Ferr*		<b>7</b>	0.1	0.1

FERROGRAPHY		method	limit/base	current	history1	history2
Ferrous Rubbing	Scale 0-10	ASTM D7684*		1	1	1
Ferrous Sliding	Scale 0-10	ASTM D7684*				
Ferrous Cutting	Scale 0-10	ASTM D7684*				
Ferrous Rolling	Scale 0-10	ASTM D7684*				1
Ferrous Break-in	Scale 0-10	ASTM D7684*				
Ferrous Spheres	Scale 0-10	ASTM D7684*				
Ferrous Black Oxides	Scale 0-10	ASTM D7684*				
Ferrous Red Oxides	Scale 0-10	ASTM D7684*				
Ferrous Corrosive	Scale 0-10	ASTM D7684*				
Ferrous Other	Scale 0-10	ASTM D7684*				
Nonferrous Rubbing	Scale 0-10	ASTM D7684*				
Nonferrous Sliding	Scale 0-10	ASTM D7684*				
Nonferrous Cutting	Scale 0-10	ASTM D7684*				
Nonferrous Rolling	Scale 0-10	ASTM D7684*				
Nonferrous Other	Scale 0-10	ASTM D7684*				
Carbonaceous Material	Scale 0-10	ASTM D7684*				
Lubricant Degradation	Scale 0-10	ASTM D7684*				
Sand/Dirt	Scale 0-10	ASTM D7684*		1	1	
Fibres	Scale 0-10	ASTM D7684*				
Spheres	Scale 0-10	ASTM D7684*				
Other	Scale 0-10	ASTM D7684*		1		1

### WEAR

All component wear rates are normal. The direct-reading & analytical ferrographic results are normal indicating no abnormal wear in the system.



*This page left intentionally blank*