



FUEL REPORT

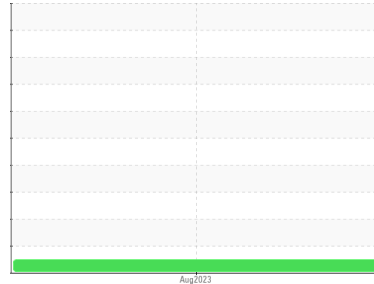
Sample Rating Trend

NORMAL



Area
[WG00681]
Machine Id
KIOTI DK4210

Component
Diesel Fuel
Fluid
No.2 DIESEL FUEL (ULTRALOW SULPHUR) (--- GAL)



DIAGNOSIS

Recommendation

Laboratory test indicate that this fuel is suitable for use and meets all test requirements. Resample at the next service interval to monitor.

Corrosion

{not applicable}

Contaminants

The system cleanliness is acceptable for your target ISO 4406 cleanliness code. The water content is negligible. There is no indication of any contamination in the diesel fuel.

Fuel Condition

All laboratory tests indicate that this sample meets specifications for No.2 ultra-low-sulfur diesel fuel (US EPA/CGSB-3.517-3 type B).

SAMPLE INFORMATION

method	limit/base	current	history1	history2
Sample Number	Client Info	KT0000819	---	---
Sample Date	Client Info	08 Aug 2023	---	---
Machine Age	hrs Client Info	0	---	---
Sample Status		NORMAL	---	---

PHYSICAL PROPERTIES

method	limit/base	current	history1	history2	
Specific Gravity	ASTM D1298*	0.839	0.851	---	---
Fuel Color	text Visual Screen*	Yellow	Yellow	---	---
Visc @ 40°C	cSt ASTM D7279(m)	3.0	2.7	---	---
Pensky-Martens Flash Point	°C ASTM D7215*	52	56.7	---	---

SULFUR CONTENT

method	limit/base	current	history1	history2	
Sulfur	ppm ASTM D5185(m)	10	13	---	---

DISTILLATION

method	limit/base	current	history1	history2	
Initial Boiling Point	°C ASTM D2887*	165	167	---	---
5% Distillation Point	°C ASTM D2887*		191	---	---
10% Distill Point	°C ASTM D2887*	201	204	---	---
15% Distillation Point	°C ASTM D2887*		213	---	---
20% Distill Point	°C ASTM D2887*	216	223	---	---
30% Distill Point	°C ASTM D2887*	230	241	---	---
40% Distill Point	°C ASTM D2887*	243	256	---	---
50% Distill Point	°C ASTM D2887*	255	271	---	---
60% Distill Point	°C ASTM D2887*	267	285	---	---
70% Distill Point	°C ASTM D2887*	280	299	---	---
80% Distill Point	°C ASTM D2887*	295	313	---	---
85% Distillation Point	°C ASTM D2887*		322	---	---
90% Distill Point	°C ASTM D2887*	310	331	---	---
95% Distillation Point	°C ASTM D2887*		344	---	---
Final Boiling Point	°C ASTM D2887*	341	359	---	---

IGNITION QUALITY

method	limit/base	current	history1	history2	
API Gravity	ASTM D1298*	37.7	34	---	---
Cetane Index	ASTM D4737*	<40.0	46	---	---

CONTAMINANTS

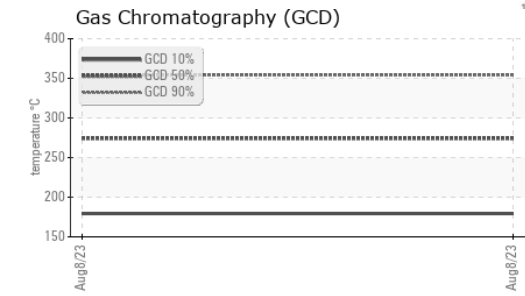
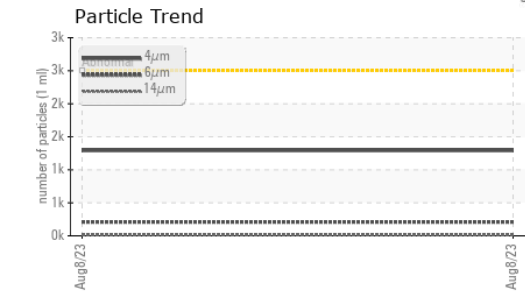
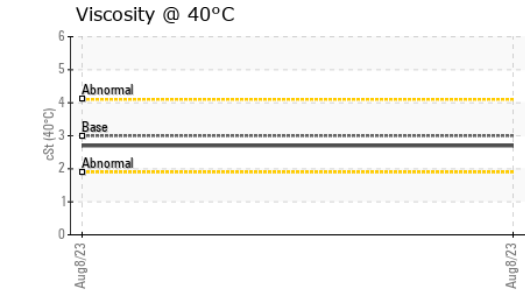
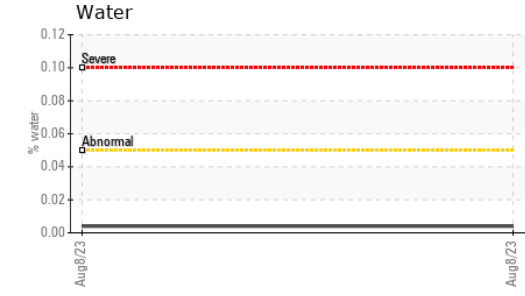
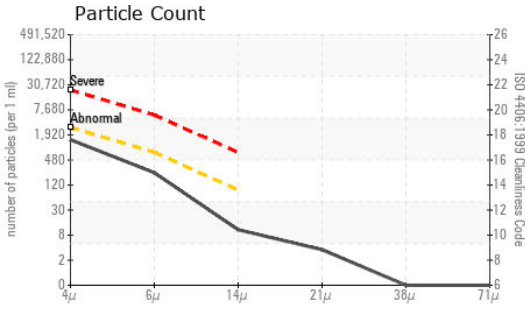
method	limit/base	current	history1	history2	
Silicon	ppm ASTM D5185(m)	<1.0	0	---	---
Sodium	ppm ASTM D5185(m)	<0.1	<1	---	---
Potassium	ppm ASTM D5185(m)	<0.1	0	---	---
Water	% ASTM D6304*	<0.05	0.004	---	---
ppm Water	ppm ASTM D6304*	<500	48.9	---	---

FLUID CLEANLINESS

method	limit/base	current	history1	history2	
Particles >4µm	ASTM D7647	>2500	1292	---	---
Particles >6µm	ASTM D7647	>640	209	---	---
Particles >14µm	ASTM D7647	>80	9	---	---
Particles >21µm	ASTM D7647	>20	3	---	---
Particles >38µm	ASTM D7647	>4	0	---	---
Particles >71µm	ASTM D7647	>3	0	---	---
Oil Cleanliness	ISO 4406 (c)	>18/16/13	17/15/10	---	---



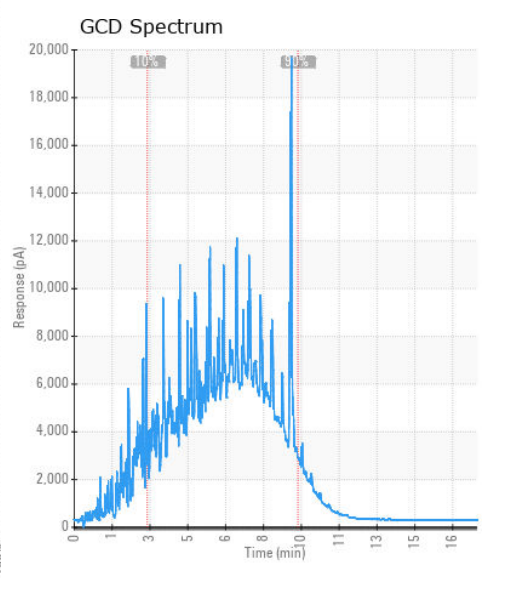
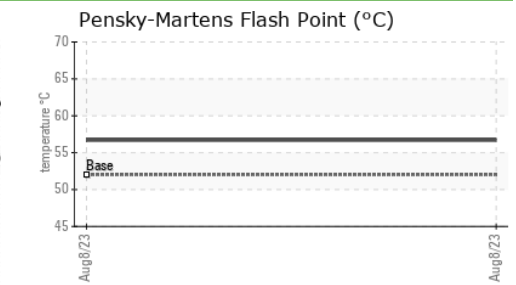
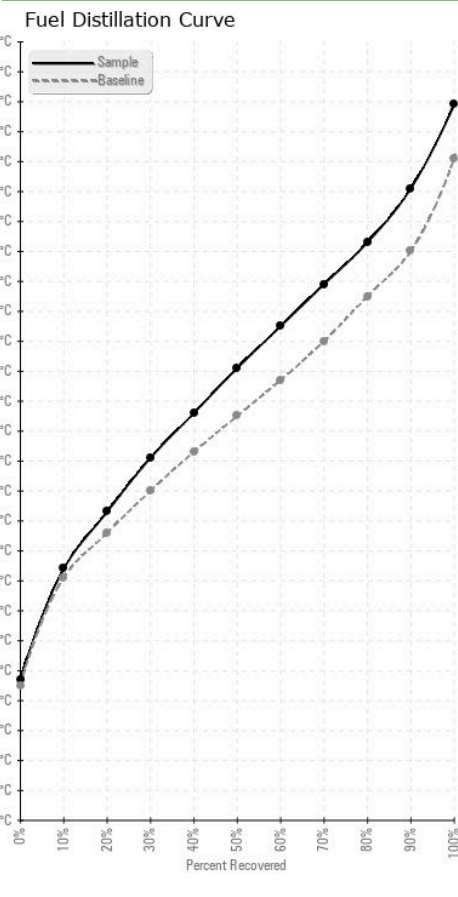
FUEL REPORT



HEAVY METALS	method	limit/base	current	history1	history2
Aluminum	ppm	ASTM D5185(m)	<0.1	0	---
Nickel	ppm	ASTM D5185(m)	<0.1	0	---
Lead	ppm	ASTM D5185(m)	<0.1	0	---
Vanadium	ppm	ASTM D5185(m)	<0.1	0	---
Iron	ppm	ASTM D5185(m)	<0.1	<1	---
Calcium	ppm	ASTM D5185(m)	<0.1	0	---
Magnesium	ppm	ASTM D5185(m)	<0.1	0	---
Phosphorus	ppm	ASTM D5185(m)	<0.1	0	---
Zinc	ppm	ASTM D5185(m)	<0.1	<1	---

SAMPLE IMAGES	method	limit/base	current	history1	history2
Color				no image	no image
Bottom				no image	no image

GRAPHS



Laboratory : WearCheck - C8-1175 Appleby Line, Burlington, ON L7L 5H9 Kioti Tractor Division - Daedong Canada Inc.
Sample No. : KT0000819 **Received** : 17 Aug 2023
Lab Number : 02576599 **Diagnosed** : 21 Aug 2023
Unique Number : 5629659 **Diagnostician** : Kevin Marson
Test Package : FUEL (Additional Tests: CC Flash, GC-PercFuel, PrtCount)

To discuss this sample report, contact Customer Service at 1-800-268-2131.
 Test denoted (*) outside scope of accreditation, (m) method modified, (e) tested at external lab.
 Validity of results and interpretation are based on the sample and information as supplied.

6500 Kitimat Rd.
 Mississauga, ON
 CA L5N 2B8
 Contact: Rick Dawson
 rdawson@kiotitractor.com
 T: (919)374-5100
 F: