

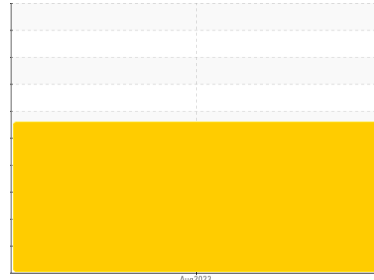


PROBLEM SUMMARY

Sample Rating Trend

WEAR PARTICLES

Machine Id
[C-FJGG] BOMBARDIER LEARJET 60 C-FJGG SUPPLY LINE FILTER
Component
B Filter
Fluid
NOT GIVEN (--- QTS)



COMPONENT CONDITION SUMMARY

No relevant graphs to display

RECOMMENDATION

We recommend an early resample to monitor this condition. Please specify the brand, type, and viscosity of the oil on your next sample.

PROBLEMATIC TEST RESULTS

Sample Status			ABNORMAL	---	---
Ferrous Rubbing	Scale 0-10	ASTM D7684*	▲ 4		
Ferrous Sliding	Scale 0-10	ASTM D7684*	▲ 2		
Ferrous Rolling	Scale 0-10	ASTM D7684*	▲ 2		
Nonferrous Rolling	Scale 0-10	ASTM D7684*	▲ 2		
Nonferrous Other	Scale 0-10	ASTM D7684*	▲ 2		

Customer Id: SKYGRA
Sample No.: PP
Lab Number: 02576982
Test Package: FLTRO



To manage this report scan the QR code

To discuss the diagnosis or test data:
Kevin Marson +1 (289)291-4644 x4644
Kevin.Marson@wearcheck.com

To change component or sample information:
Gloria Gonzalez +1 (289)291-4643 x4643
gloria.gonzalez@wearcheck.com

RECOMMENDED ACTIONS

Action	Status	Date	Done By	Description
Resample	---	---	?	We recommend an early resample to monitor this condition.
Information Required	---	---	?	Please specify the brand, type, and viscosity of the oil on your next sample.

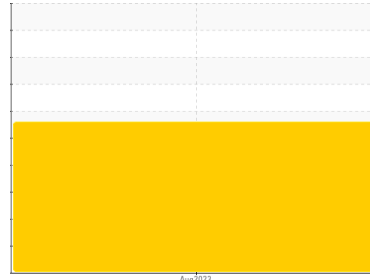
HISTORICAL DIAGNOSIS



OIL ANALYSIS REPORT

Sample Rating Trend

WEAR PARTICLES



Machine Id
[C-FJGG] BOMBARDIER LEARJET 60 C-FJGG SUPPLY LINE FILTER
 Component
B Filter
 Fluid
NOT GIVEN (--- QTS)

DIAGNOSIS

Recommendation

We recommend an early resample to monitor this condition. Please specify the brand, type, and viscosity of the oil on your next sample.

Wear Particles

Wear particle analysis indicates that the ferrous rolling, ferrous sliding, nonferrous rolling, nonferrous other and ferrous rubbing particles are abnormal. ICP-Digest indicates the most likely alloy matches are Ball Bearing Steel (SAE 52100), Manganese brass (Manganese brass).

Contaminants

The filter contained only normal levels of contaminants, and debris. All filter contaminant levels are normal.

SAMPLE INFORMATION

	method	limit/base	current	history1	history2
Sample Number	Client Info		PP	---	---
Sample Date	Client Info		17 Aug 2023	---	---
Machine Age	hrs	Client Info	0	---	---
Oil Age	hrs	Client Info	0	---	---
Oil Changed	Client Info		N/A	---	---
Sample Status			ABNORMAL	---	---

WEAR METALS

	method	limit/base	current	history1	history2
Iron	ppm	ASTM D5185(m)	65	---	---
Chromium	ppm	ASTM D5185(m)	<1	---	---
Nickel	ppm	ASTM D5185(m)	0	---	---
Titanium	ppm	ASTM D5185(m)	0	---	---

FERROGRAPHY

	method	limit/base	current	history1	history2
Ferrous Rubbing	Scale 0-10	ASTM D7684*	4		
Ferrous Sliding	Scale 0-10	ASTM D7684*	2		
Ferrous Cutting	Scale 0-10	ASTM D7684*			
Ferrous Rolling	Scale 0-10	ASTM D7684*	2		
Ferrous Break-in	Scale 0-10	ASTM D7684*			
Ferrous Spheres	Scale 0-10	ASTM D7684*			
Ferrous Black Oxides	Scale 0-10	ASTM D7684*			
Ferrous Red Oxides	Scale 0-10	ASTM D7684*			
Ferrous Corrosive	Scale 0-10	ASTM D7684*			
Ferrous Other	Scale 0-10	ASTM D7684*			
Nonferrous Rubbing	Scale 0-10	ASTM D7684*			
Nonferrous Sliding	Scale 0-10	ASTM D7684*			
Nonferrous Cutting	Scale 0-10	ASTM D7684*			
Nonferrous Rolling	Scale 0-10	ASTM D7684*	2		
Nonferrous Other	Scale 0-10	ASTM D7684*	2		
Sand/Dirt	Scale 0-10	ASTM D7684*			
Fibres	Scale 0-10	ASTM D7684*			
Spheres	Scale 0-10	ASTM D7684*			
Other	Scale 0-10	ASTM D7684*			
Patch Weight	mg	ASTM D7684*	53	---	---

ADDITIVES

	method	limit/base	current	history1	history2
Manganese	ppm	ASTM D5185(m)	<1	---	---
Sulfur	ppm	ASTM D5185(m)	0	---	---

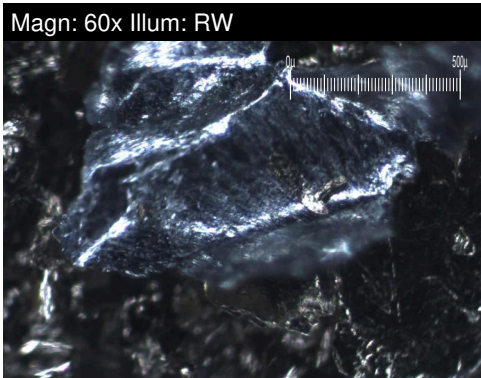
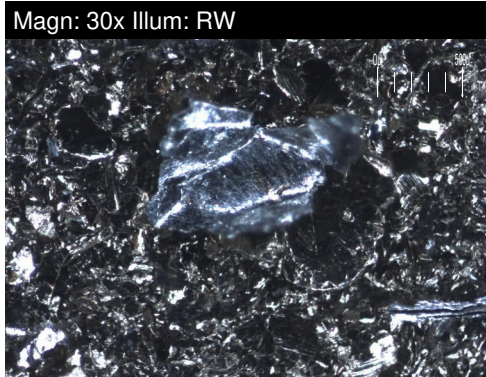
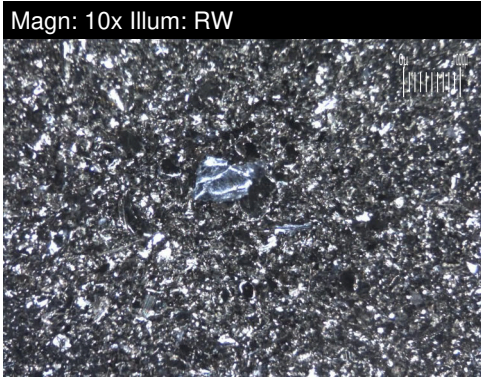
CONTAMINANTS

	method	limit/base	current	history1	history2
Silicon	ppm	ASTM D5185(m)	<1	---	---

OIL ANALYSIS REPORT

SAMPLE IMAGES	method	limit/base	current	history1	history2
Color			no image	no image	no image
Bottom			no image	no image	no image

GRAPHS



Laboratory : WearCheck - C8-1175 Appleby Line, Burlington, ON L7L 5H9
Sample No. : PP **Received** : 18 Aug 2023
Lab Number : 02576982 **Diagnosed** : 18 Aug 2023
Unique Number : 5630042 **Diagnostician** : Kevin Marson
Test Package : FLTRO (Additional Tests: ICP, ICP-DIGEST)

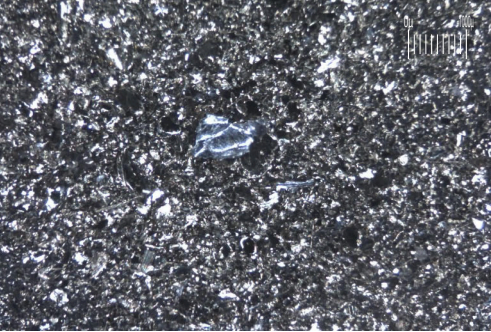
*To discuss this sample report, contact Customer Service at 1-800-268-2131.
 Test denoted (*) outside scope of accreditation, (m) method modified, (e) tested at external lab.
 Validity of results and interpretation are based on the sample and information as supplied.*

Skyservice
 1004 Airport Rd
 Gravenhurst, ON
 CA P1P 1R1
 Contact: Terri Beckitt
 Terri_Beckitt@skyservice.com
 T: (905)362-5593
 F:

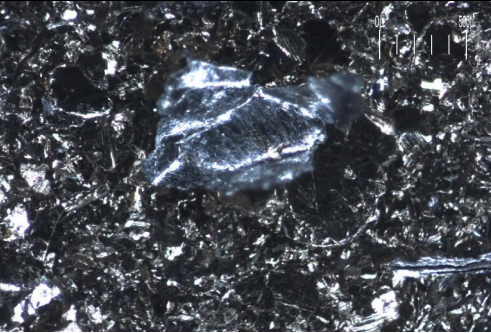
FILTER REPORT

Machine Id
[C-FJGG] BOMBARDIER LEARJET 60 C-FJGG SUPPLY LINE FILTER
 Component
B Filter
 Fluid
NOT GIVEN (--- QTS)

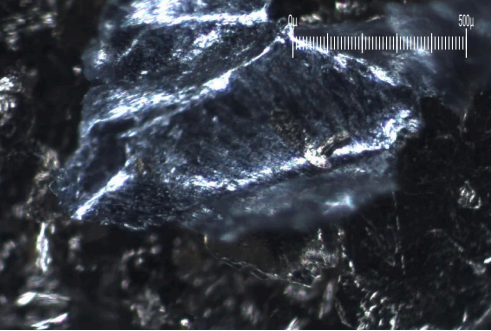
Magn: 10x Illum: RW



Magn: 30x Illum: RW



Magn: 60x Illum: RW



FERROGRAPHY			method	limit/base	current	history1	history2
Ferrous Rubbing	Scale 0-10	ASTM D7684*			▲ ■■ 4		
Ferrous Sliding	Scale 0-10	ASTM D7684*			▲ ■ 2		
Ferrous Cutting	Scale 0-10	ASTM D7684*					
Ferrous Rolling	Scale 0-10	ASTM D7684*			▲ ■ 2		
Ferrous Break-in	Scale 0-10	ASTM D7684*					
Ferrous Spheres	Scale 0-10	ASTM D7684*					
Ferrous Black Oxides	Scale 0-10	ASTM D7684*					
Ferrous Red Oxides	Scale 0-10	ASTM D7684*					
Ferrous Corrosive	Scale 0-10	ASTM D7684*					
Ferrous Other	Scale 0-10	ASTM D7684*					
Nonferrous Rubbing	Scale 0-10	ASTM D7684*					
Nonferrous Sliding	Scale 0-10	ASTM D7684*					
Nonferrous Cutting	Scale 0-10	ASTM D7684*					
Nonferrous Rolling	Scale 0-10	ASTM D7684*			▲ ■ 2		
Nonferrous Other	Scale 0-10	ASTM D7684*			▲ ■ 2		
Sand/Dirt	Scale 0-10	ASTM D7684*					
Fibres	Scale 0-10	ASTM D7684*					
Spheres	Scale 0-10	ASTM D7684*					
Other	Scale 0-10	ASTM D7684*					
Patch Weight	mg	ASTM D7684*			53	---	---

WEAR

Wear particle analysis indicates that the ferrous rolling, ferrous sliding, nonferrous rolling, nonferrous other and ferrous rubbing particles are abnormal. ICP-Digest indicates the most likely alloy matches are Ball Bearing Steel (SAE 52100), Manganese brass (Manganese brass).

This page left intentionally blank