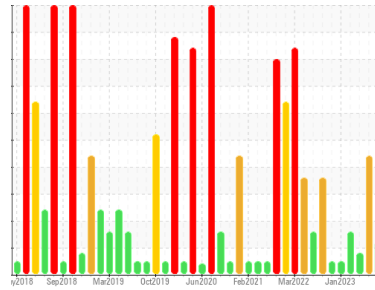




FUEL REPORT

Sample Rating Trend



ISO



Machine Id
TDT411202C DIESEL DAY TANK FIRE WATER PUMP C

Component
Diesel Fuel
Fluid

No.2 DIESEL FUEL (ULTRALOW SULPHUR) (--- GAL)

DIAGNOSIS

Recommendation

Laboratory test indicate that this fuel is suitable for use and meets all test requirements. We advise that you filter this fluid before use. We recommend you service the filters on this component. Resample at the next service interval to monitor.

Corrosion

{not applicable}

Contaminants

There is a light amount of silt (particulates < 14 microns in size) present in the fuel. The water content is negligible.

Fuel Condition

All laboratory tests indicate that this sample meets specifications for No.2 ultra-low-sulfur diesel fuel (US EPA/CGSB-3.517-3 type B).

SAMPLE INFORMATION

method	limit/base	current	history1	history2
Sample Number	Client Info	PP13899605	PP13878485	PP13857616
Sample Date	Client Info	06 Aug 2023	10 Jul 2023	07 May 2023
Machine Age	hrs	0	0	0
Sample Status		ATTENTION	ABNORMAL	ATTENTION

PHYSICAL PROPERTIES

method	limit/base	current	history1	history2		
Specific Gravity	ASTM D1298*	0.839	0.841	0.842	0.843	
Fuel Color	text	Visual Screen*	Yellow	Yellow	Yellow	
Visc @ 40°C	cSt	ASTM D7279(m)	3.0	2.7	2.8	2.7
Pensky-Martens Flash Point	°C	ASTM D7215*	52	74.1	73.8	72.6

SULFUR CONTENT

method	limit/base	current	history1	history2		
Sulfur	ppm	ASTM D5185(m)	10	8	8	8

DISTILLATION

method	limit/base	current	history1	history2		
Initial Boiling Point	°C	ASTM D2887*	165	186	186	185
5% Distillation Point	°C	ASTM D2887*		206	206	204
10% Distill Point	°C	ASTM D2887*	201	215	214	213
15% Distillation Point	°C	ASTM D2887*		222	222	220
20% Distill Point	°C	ASTM D2887*	216	229	229	228
30% Distill Point	°C	ASTM D2887*	230	243	243	242
40% Distill Point	°C	ASTM D2887*	243	255	255	253
50% Distill Point	°C	ASTM D2887*	255	267	267	265
60% Distill Point	°C	ASTM D2887*	267	280	280	278
70% Distill Point	°C	ASTM D2887*	280	293	293	291
80% Distill Point	°C	ASTM D2887*	295	307	307	305
85% Distillation Point	°C	ASTM D2887*		317	317	315
90% Distill Point	°C	ASTM D2887*	310	327	327	325
95% Distillation Point	°C	ASTM D2887*		345	344	343
Final Boiling Point	°C	ASTM D2887*	341	365	364	364

IGNITION QUALITY

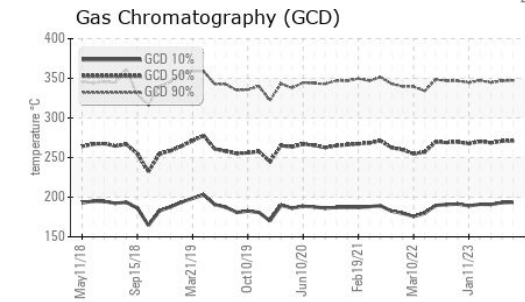
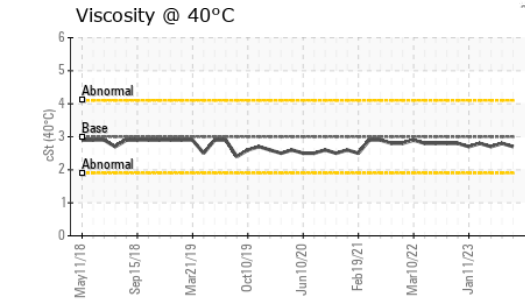
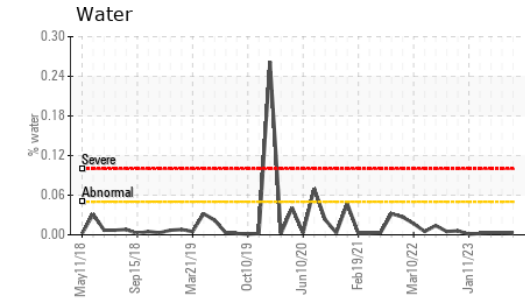
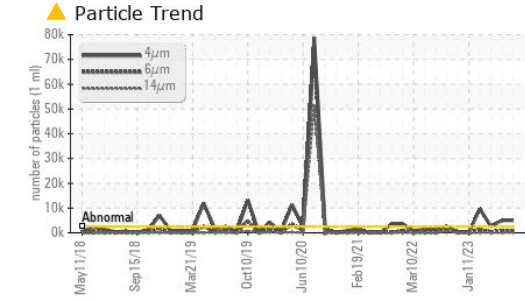
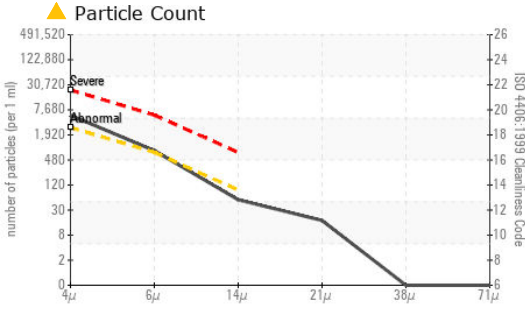
method	limit/base	current	history1	history2	
API Gravity	ASTM D1298*	37.7	36	36	36
Cetane Index	ASTM D4737*	<40.0	50	49	49

CONTAMINANTS

method	limit/base	current	history1	history2		
Silicon	ppm	ASTM D5185(m)	<1.0	0	0	0
Sodium	ppm	ASTM D5185(m)	<0.1	0	0	<1
Potassium	ppm	ASTM D5185(m)	<0.1	<1	<1	0
Water	%	ASTM D6304*	<0.05	0.002	0.003	0.003
ppm Water	ppm	ASTM D6304*	<500	24.2	26.7	27.7

FLUID CLEANLINESS

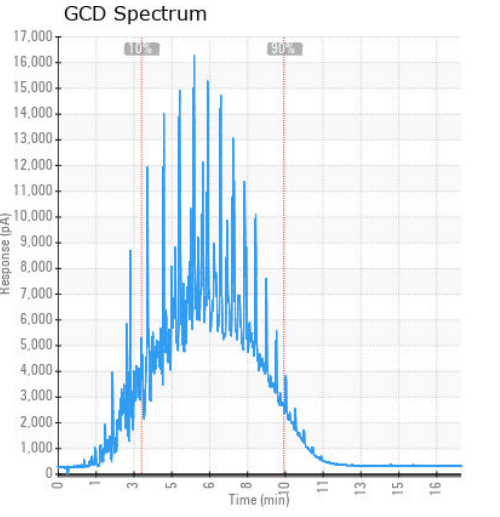
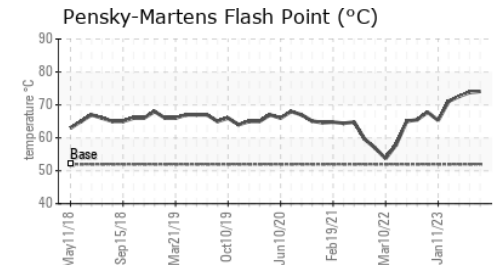
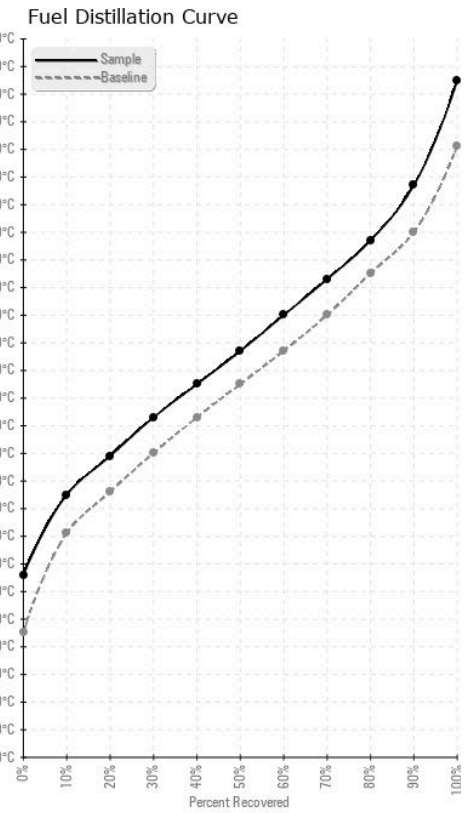
method	limit/base	current	history1	history2	
Particles >4µm	ASTM D7647	>2500	▲ 4968	▲ 4980	▲ 2564
Particles >6µm	ASTM D7647	>640	▲ 706	▲ 780	336
Particles >14µm	ASTM D7647	>80	47	▲ 87	28
Particles >21µm	ASTM D7647	>20	15	▲ 32	8
Particles >38µm	ASTM D7647	>4	0	3	0
Particles >71µm	ASTM D7647	>3	0	0	0
Oil Cleanliness	ISO 4406 (c)	>18/16/13	▲ 19/17/13	▲ 19/17/14	▲ 19/16/12



HEAVY METALS	method	limit/base	current	history1	history2
Aluminum	ppm	ASTM D5185(m)	<0.1	0	0
Nickel	ppm	ASTM D5185(m)	<0.1	0	0
Lead	ppm	ASTM D5185(m)	<0.1	0	0
Vanadium	ppm	ASTM D5185(m)	<0.1	0	0
Iron	ppm	ASTM D5185(m)	<1	<1	<1
Calcium	ppm	ASTM D5185(m)	<0.1	0	<1
Magnesium	ppm	ASTM D5185(m)	<0.1	0	0
Phosphorus	ppm	ASTM D5185(m)	<0.1	0	0
Zinc	ppm	ASTM D5185(m)	<0.1	0	<1

SAMPLE IMAGES	method	limit/base	current	history1	history2
Color					
Bottom					

GRAPHS



Laboratory : WearCheck - C8-1175 Appleby Line, Burlington, ON L7L 5H9
Sample No. : PP13899605
Lab Number : 02577277
Unique Number : 5630337
Test Package : FUEL (Additional Tests: CC Flash, GC-PercFuel, PrtCount)

ExxonMobil Canada East Ltd.
 Hebron-Materials and Repair Coordin, Suite 1000, 100 New Gow
 St. John's, NL
 CA A1C 6K3
 Contact: Liam Maher
 liam.m.maher@exxonmobil.com
 T: (709)273-3729
 F:

To discuss this sample report, contact Customer Service at 1-800-268-2131.
 Test denoted (*) outside scope of accreditation, (m) method modified, (e) tested at external lab.
 Validity of results and interpretation are based on the sample and information as supplied.