

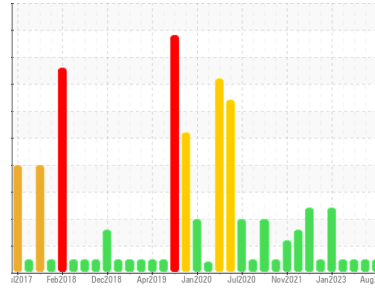


FUEL REPORT

Sample Rating Trend

NORMAL

Area
A21
 Machine Id
ADT911220 TANK RAW DIESEL SE PEDESTAL CRANE
 Component
Diesel Fuel
 Fluid
No.2 DIESEL FUEL (ULTRALOW SULPHUR) (260000 LTR)



DIAGNOSIS

Recommendation

Laboratory test indicate that this fuel is suitable for use and meets all test requirements. Resample at the next service interval to monitor.

Corrosion

{not applicable}

Contaminants

The system cleanliness is acceptable for your target ISO 4406 cleanliness code. The water content is negligible. There is no indication of any contamination in the diesel fuel.

Fuel Condition

All laboratory tests indicate that this sample meets specifications for No.2 ultra-low-sulfur diesel fuel (US EPA/CGSB-3.517-3 type B).

SAMPLE INFORMATION		method	limit/base	current	history1	history2
Sample Number	Client Info			PP13899605	PP13878485	PP13857616
Sample Date	Client Info			06 Aug 2023	10 Jul 2023	07 May 2023
Machine Age	hrs	Client Info		0	0	0
Sample Status				NORMAL	NORMAL	NORMAL

PHYSICAL PROPERTIES		method	limit/base	current	history1	history2
Specific Gravity		ASTM D1298*	0.839	0.837	0.837	0.837
Fuel Color	text	Visual Screen*	Yellow	Yellow	Yellow	Yellow
Visc @ 40°C	cSt	ASTM D7279(m)	3.0	2.7	2.7	2.6
Pensky-Martens Flash Point	°C	ASTM D7215*	52	61.4	62.5	62.2

SULFUR CONTENT		method	limit/base	current	history1	history2
Sulfur	ppm	ASTM D5185(m)	10	6	6	6

DISTILLATION		method	limit/base	current	history1	history2
Initial Boiling Point	°C	ASTM D2887*	165	172	173	173
5% Distillation Point	°C	ASTM D2887*		192	195	195
10% Distill Point	°C	ASTM D2887*	201	203	207	206
15% Distillation Point	°C	ASTM D2887*		211	215	214
20% Distill Point	°C	ASTM D2887*	216	220	224	223
30% Distill Point	°C	ASTM D2887*	230	235	240	238
40% Distill Point	°C	ASTM D2887*	243	248	253	252
50% Distill Point	°C	ASTM D2887*	255	261	267	265
60% Distill Point	°C	ASTM D2887*	267	276	280	279
70% Distill Point	°C	ASTM D2887*	280	290	294	294
80% Distill Point	°C	ASTM D2887*	295	307	310	309
85% Distillation Point	°C	ASTM D2887*		319	321	320
90% Distill Point	°C	ASTM D2887*	310	331	331	331
95% Distillation Point	°C	ASTM D2887*		352	349	349
Final Boiling Point	°C	ASTM D2887*	341	385	365	369

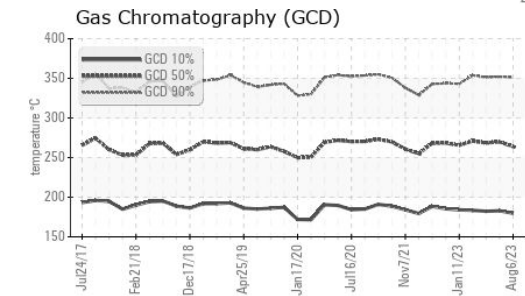
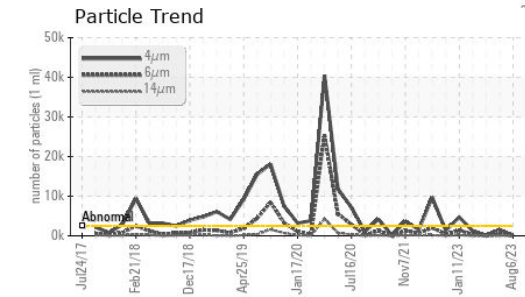
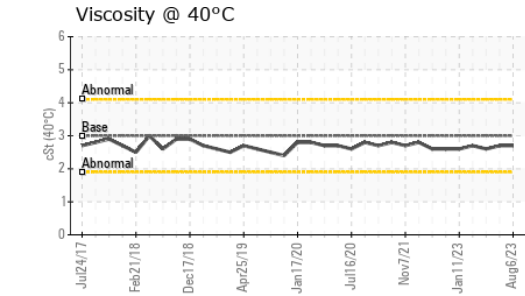
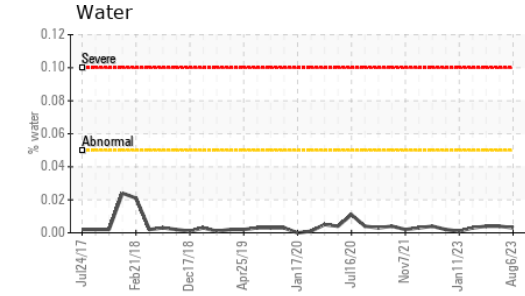
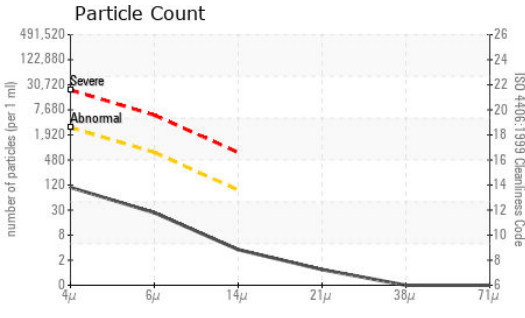
IGNITION QUALITY		method	limit/base	current	history1	history2
API Gravity		ASTM D1298*	37.7	37	37	37
Cetane Index		ASTM D4737*	<40.0	50	51	50

CONTAMINANTS		method	limit/base	current	history1	history2
Silicon	ppm	ASTM D5185(m)	<1.0	0	0	0
Sodium	ppm	ASTM D5185(m)	<0.1	0	0	<1
Potassium	ppm	ASTM D5185(m)	<0.1	<1	<1	0
Water	%	ASTM D6304*	<0.05	0.003	0.004	0.004
ppm Water	ppm	ASTM D6304*	<500	32.4	40.3	48.9

FLUID CLEANLINESS		method	limit/base	current	history1	history2
Particles >4µm		ASTM D7647	>2500	93	1549	107
Particles >6µm		ASTM D7647	>640	23	413	21
Particles >14µm		ASTM D7647	>80	3	32	1
Particles >21µm		ASTM D7647	>20	1	7	0
Particles >38µm		ASTM D7647	>4	0	0	0
Particles >71µm		ASTM D7647	>3	0	0	0
Oil Cleanliness		ISO 4406 (c)	>18/16/13	14/12/9	18/16/12	14/12/7



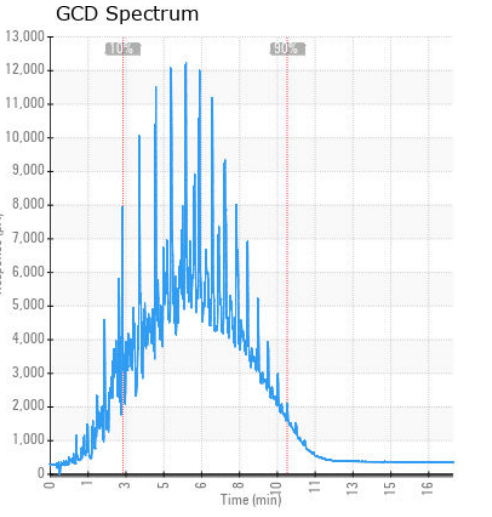
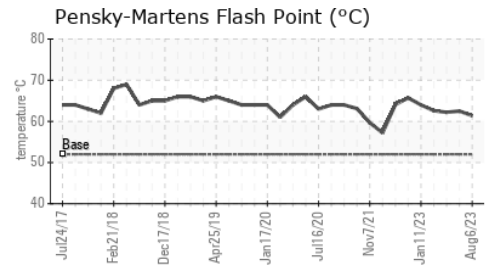
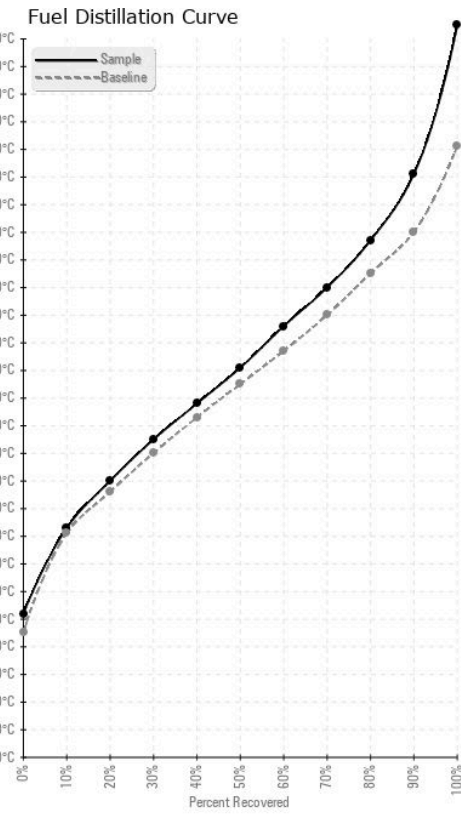
FUEL REPORT



HEAVY METALS	method	limit/base	current	history1	history2
Aluminum	ppm	ASTM D5185(m)	<0.1	0	0
Nickel	ppm	ASTM D5185(m)	<0.1	0	0
Lead	ppm	ASTM D5185(m)	<0.1	0	0
Vanadium	ppm	ASTM D5185(m)	<0.1	0	0
Iron	ppm	ASTM D5185(m)	<1	<1	<1
Calcium	ppm	ASTM D5185(m)	<0.1	0	<1
Magnesium	ppm	ASTM D5185(m)	<0.1	0	0
Phosphorus	ppm	ASTM D5185(m)	<0.1	0	0
Zinc	ppm	ASTM D5185(m)	<0.1	0	<1

SAMPLE IMAGES	method	limit/base	current	history1	history2
Color					
Bottom					

GRAPHS



Laboratory : WearCheck - C8-1175 Appleby Line, Burlington, ON L7L 5H9
Sample No. : PP13899605 **Received** : 21 Aug 2023
Lab Number : 02577280 **Diagnosed** : 28 Aug 2023
Unique Number : 5630340 **Diagnostician** : Kevin Marson
Test Package : FUEL (Additional Tests: CC Flash, GC-PercFuel, PRTCOUNT)

ExxonMobil Canada East Ltd.
 Hebron-Materials and Repair Coordin, Suite 1000, 100 New Gow
 St. John's, NL
 CA A1C 6K3
 Contact: Liam Maher
 liam.m.maher@exxonmobil.com
 T: (709)273-3729
 F:

To discuss this sample report, contact Customer Service at 1-800-268-2131.
 Test denoted (*) outside scope of accreditation, (m) method modified, (e) tested at external lab.
 Validity of results and interpretation are based on the sample and information as supplied.