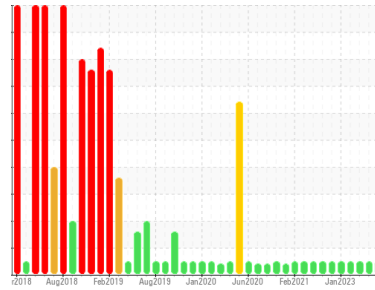




FUEL REPORT

Sample Rating Trend



NORMAL



Machine Id
TDT411202D DIESEL DAY TANK FIRE WATER PUMP D

Component
Diesel Fuel
Fluid

No.2 DIESEL FUEL (ULTRALOW SULPHUR) (--- GAL)

DIAGNOSIS

Recommendation

Laboratory test indicate that this fuel is suitable for use and meets all test requirements. Resample at the next service interval to monitor.

Corrosion

{not applicable}

Contaminants

The system cleanliness is acceptable for your target ISO 4406 cleanliness code. The water content is negligible. There is no indication of any contamination in the diesel fuel.

Fuel Condition

All laboratory tests indicate that this sample meets specifications for No.2 ultra-low-sulfur diesel fuel (US EPA/CGSB-3.517-3 type B).

SAMPLE INFORMATION

method	limit/base	current	history1	history2
Sample Number	Client Info	PP13899605	PP13878485	PP13857616
Sample Date	Client Info	06 Aug 2023	10 Jul 2023	07 May 2023
Machine Age	hrs	0	0	0
Sample Status		NORMAL	NORMAL	NORMAL

PHYSICAL PROPERTIES

method	limit/base	current	history1	history2		
Specific Gravity	ASTM D1298*	0.839	0.841	0.842	0.844	
Fuel Color	text	Visual Screen*	Yellow	Yellow	Yellow	
Visc @ 40°C	cSt	ASTM D7279(m)	3.0	2.8	2.7	2.7
Pensky-Martens Flash Point	°C	ASTM D7215*	52	64.8	65.1	64.1

SULFUR CONTENT

method	limit/base	current	history1	history2		
Sulfur	ppm	ASTM D5185(m)	10	8	8	8

DISTILLATION

method	limit/base	current	history1	history2		
Initial Boiling Point	°C	ASTM D2887*	165	176	176	176
5% Distillation Point	°C	ASTM D2887*		199	200	199
10% Distill Point	°C	ASTM D2887*	201	211	211	209
15% Distillation Point	°C	ASTM D2887*		219	219	218
20% Distill Point	°C	ASTM D2887*	216	227	227	226
30% Distill Point	°C	ASTM D2887*	230	242	241	240
40% Distill Point	°C	ASTM D2887*	243	254	254	252
50% Distill Point	°C	ASTM D2887*	255	267	266	264
60% Distill Point	°C	ASTM D2887*	267	280	279	277
70% Distill Point	°C	ASTM D2887*	280	293	292	290
80% Distill Point	°C	ASTM D2887*	295	308	307	305
85% Distillation Point	°C	ASTM D2887*		318	317	315
90% Distill Point	°C	ASTM D2887*	310	329	327	326
95% Distillation Point	°C	ASTM D2887*		346	345	344
Final Boiling Point	°C	ASTM D2887*	341	368	364	363

IGNITION QUALITY

method	limit/base	current	history1	history2	
API Gravity	ASTM D1298*	37.7	36	36	36
Cetane Index	ASTM D4737*	<40.0	50	49	48

CONTAMINANTS

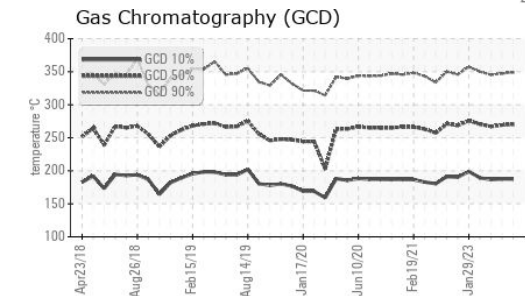
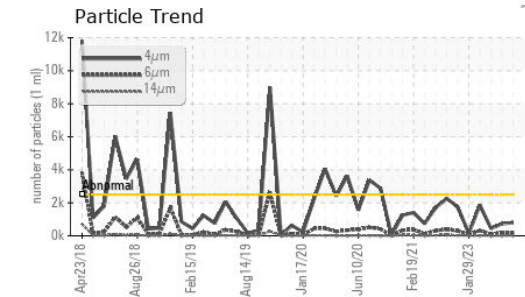
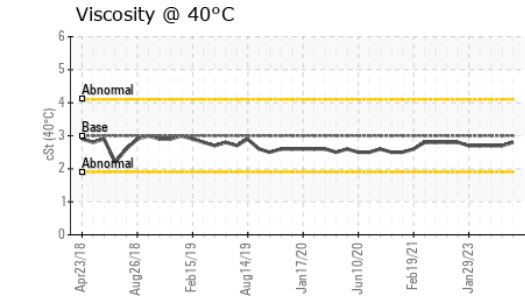
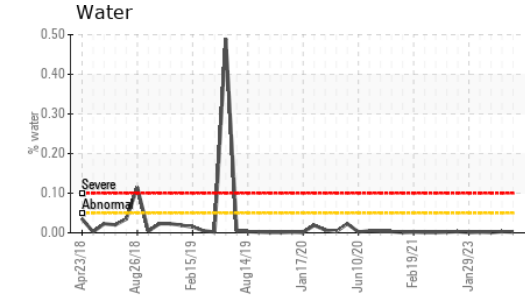
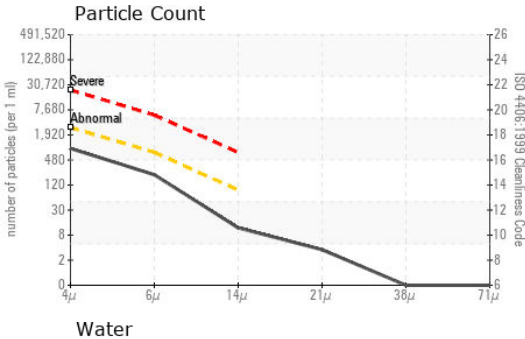
method	limit/base	current	history1	history2		
Silicon	ppm	ASTM D5185(m)	<1.0	0	0	0
Sodium	ppm	ASTM D5185(m)	<0.1	0	0	<1
Potassium	ppm	ASTM D5185(m)	<0.1	<1	<1	0
Water	%	ASTM D6304*	<0.05	0.002	0.003	0.001
ppm Water	ppm	ASTM D6304*	<500	23.8	27.7	3.6

FLUID CLEANLINESS

method	limit/base	current	history1	history2	
Particles >4µm	ASTM D7647	>2500	798	730	443
Particles >6µm	ASTM D7647	>640	187	203	88
Particles >14µm	ASTM D7647	>80	10	21	7
Particles >21µm	ASTM D7647	>20	3	6	2
Particles >38µm	ASTM D7647	>4	0	0	0
Particles >71µm	ASTM D7647	>3	0	0	0
Oil Cleanliness	ISO 4406 (c)	>18/16/13	17/15/10	17/15/12	16/14/10



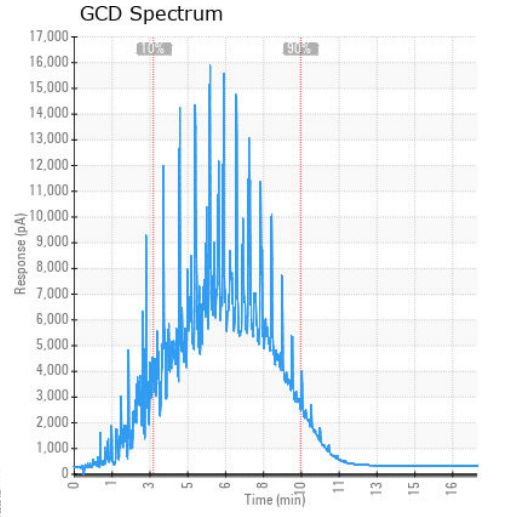
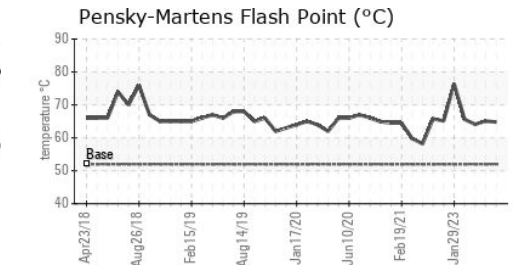
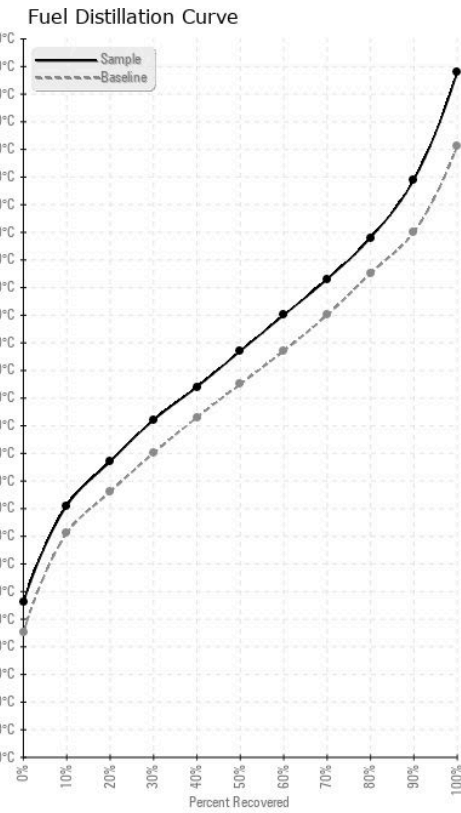
FUEL REPORT



HEAVY METALS	method	limit/base	current	history1	history2
Aluminum	ppm	ASTM D5185(m)	<0.1	0	0
Nickel	ppm	ASTM D5185(m)	<0.1	0	0
Lead	ppm	ASTM D5185(m)	<0.1	0	0
Vanadium	ppm	ASTM D5185(m)	<0.1	0	0
Iron	ppm	ASTM D5185(m)	<1	<1	<1
Calcium	ppm	ASTM D5185(m)	<0.1	0	<1
Magnesium	ppm	ASTM D5185(m)	<0.1	0	0
Phosphorus	ppm	ASTM D5185(m)	<0.1	0	<1
Zinc	ppm	ASTM D5185(m)	<0.1	0	<1

SAMPLE IMAGES	method	limit/base	current	history1	history2
Color					
Bottom					

GRAPHS



Laboratory : WearCheck - C8-1175 Appleby Line, Burlington, ON L7L 5H9
Sample No. : PP13899605
Lab Number : 02577281
Unique Number : 5630341
Test Package : FUEL (Additional Tests: CC Flash, GC-PercFuel, PrtCount)

ExxonMobil Canada East Ltd.
 Hebron-Materials and Repair Coordin, Suite 1000, 100 New Gow
 St. John's, NL
 CA A1C 6K3
 Contact: Liam Maher
 liam.m.maher@exxonmobil.com
 T: (709)273-3729
 F:

To discuss this sample report, contact Customer Service at 1-800-268-2131.
 Test denoted (*) outside scope of accreditation, (m) method modified, (e) tested at external lab.
 Validity of results and interpretation are based on the sample and information as supplied.