



OIL ANALYSIS REPORT

Sample Rating Trend

NORMAL



Machine Id
PRESSION BC01

Component
Hydraulic System

Fluid
NOT GIVEN (--- LTR)

DIAGNOSIS

Recommendation

Little or no information is provided as to the component and lubricant being tested. Recommendations are therefore generic in nature and may not apply to the current application. Please forward information as to equipment type, reservoir capacity, lubricant type and any pertinent information to allow for a more accurate assessment. Resample at the next service interval to monitor. NOTE: Please provide information regarding reservoir capacity, filter type and micron rating with next sample. Please specify the brand, type, and viscosity of the oil on your next sample.

Wear

All component wear rates are normal. The direct-reading & analytical ferrographic results are normal indicating no abnormal wear in the system.

Contaminants

The system cleanliness is acceptable for your target ISO 4406 cleanliness code. The system and fluid cleanliness is acceptable.

Oil Condition

The AN level is acceptable for this fluid. The condition of the oil is suitable for further service.

SAMPLE INFORMATION		method	limit/base	current	history1	history2
Sample Number	Client Info			PP	---	---
Sample Date	Client Info			17 Aug 2023	---	---
Machine Age	hrs	Client Info		0	---	---
Oil Age	hrs	Client Info		0	---	---
Oil Changed	Client Info			N/A	---	---
Sample Status				NORMAL	---	---

WEAR METALS		method	limit/base	current	history1	history2
PQ		ASTM D8184*		0	---	---
Iron	ppm	ASTM D5185(m)	>20	3	---	---
Chromium	ppm	ASTM D5185(m)	>20	<1	---	---
Nickel	ppm	ASTM D5185(m)	>20	<1	---	---
Titanium	ppm	ASTM D5185(m)		<1	---	---
Silver	ppm	ASTM D5185(m)		0	---	---
Aluminum	ppm	ASTM D5185(m)	>20	1	---	---
Lead	ppm	ASTM D5185(m)	>20	<1	---	---
Copper	ppm	ASTM D5185(m)	>20	6	---	---
Tin	ppm	ASTM D5185(m)	>20	0	---	---
Antimony	ppm	ASTM D5185(m)		0	---	---
Vanadium	ppm	ASTM D5185(m)		0	---	---
Beryllium	ppm	ASTM D5185(m)		0	---	---
Cadmium	ppm	ASTM D5185(m)		0	---	---

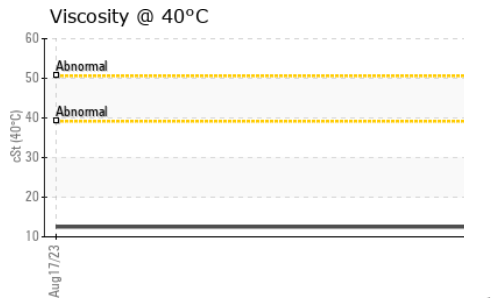
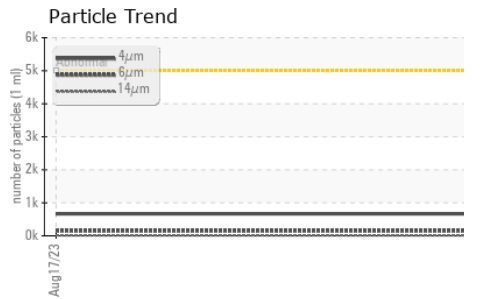
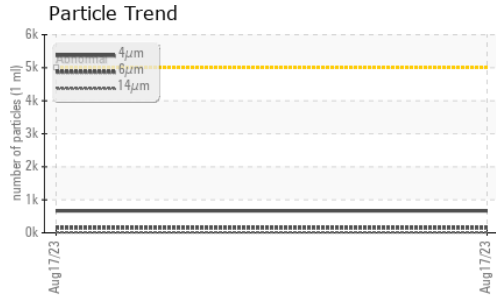
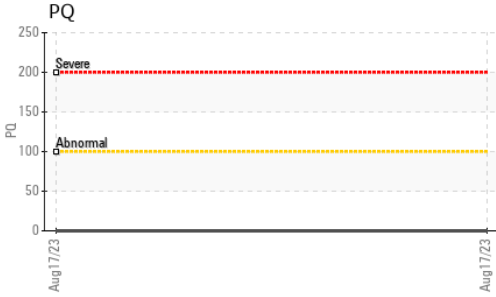
ADDITIVES		method	limit/base	current	history1	history2
Boron	ppm	ASTM D5185(m)		<1	---	---
Barium	ppm	ASTM D5185(m)		0	---	---
Molybdenum	ppm	ASTM D5185(m)		0	---	---
Manganese	ppm	ASTM D5185(m)		<1	---	---
Magnesium	ppm	ASTM D5185(m)		2	---	---
Calcium	ppm	ASTM D5185(m)		3	---	---
Phosphorus	ppm	ASTM D5185(m)		1553	---	---
Zinc	ppm	ASTM D5185(m)		32	---	---
Sulfur	ppm	ASTM D5185(m)		1398	---	---
Lithium	ppm	ASTM D5185(m)		<1	---	---

CONTAMINANTS		method	limit/base	current	history1	history2
Silicon	ppm	ASTM D5185(m)	>15	3	---	---
Sodium	ppm	ASTM D5185(m)		3	---	---
Potassium	ppm	ASTM D5185(m)	>20	<1	---	---

FLUID CLEANLINESS		method	limit/base	current	history1	history2
Particles >4µm		ASTM D7647	>5000	665	---	---
Particles >6µm		ASTM D7647	>1300	153	---	---
Particles >14µm		ASTM D7647	>160	14	---	---
Particles >21µm		ASTM D7647	>40	5	---	---
Particles >38µm		ASTM D7647	>10	1	---	---
Particles >71µm		ASTM D7647	>3	1	---	---
Oil Cleanliness		ISO 4406 (c)	>19/17/14	17/14/11	---	---



OIL ANALYSIS REPORT



FLUID DEGRADATION	method	limit/base	current	history1	history2
Acid Number (AN)	mg KOH/g	ASTM D974*	0.83	---	---

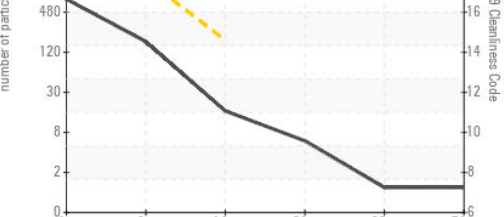
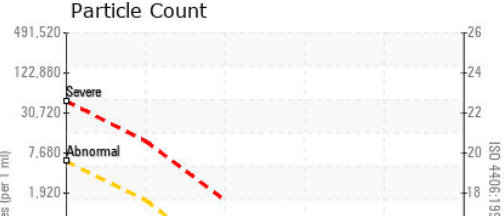
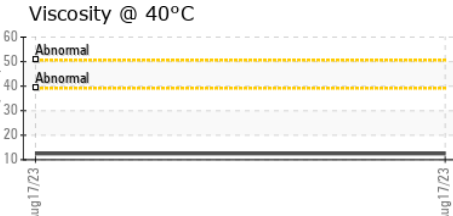
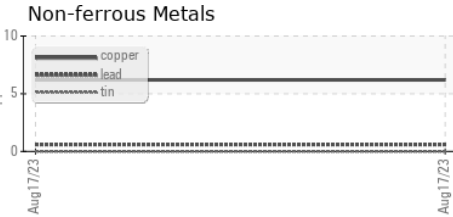
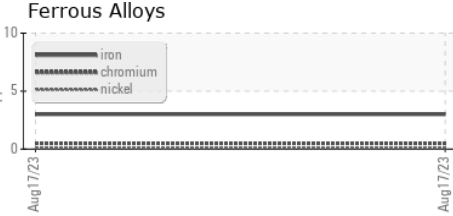
VISUAL	method	limit/base	current	history1	history2	
White Metal	scalar	Visual*	NONE	NONE	---	---
Yellow Metal	scalar	Visual*	NONE	NONE	---	---
Precipitate	scalar	Visual*	NONE	NONE	---	---
Silt	scalar	Visual*	NONE	NONE	---	---
Debris	scalar	Visual*	NONE	NONE	---	---
Sand/Dirt	scalar	Visual*	NONE	NONE	---	---
Appearance	scalar	Visual*	NORML	NORML	---	---
Odor	scalar	Visual*	NORML	NORML	---	---
Emulsified Water	scalar	Visual*	>0.05	NEG	---	---
Free Water	scalar	Visual*		NEG	---	---

FLUID PROPERTIES	method	limit/base	current	history1	history2
Visc @ 40°C	cSt	ASTM D7279(m)	12.5	---	---

SAMPLE IMAGES

method	limit/base	current	history1	history2
Color				
Bottom				

GRAPHS



Laboratory : WearCheck - C8-1175 Appleby Line, Burlington, ON L7L 5H9
Sample No. : PP
Lab Number : 02577517
Unique Number : 5630577
Test Package : IND 3 (Additional Tests: TAN Man)

Applied Industrial Technologies
 34 Babin Av.
 Baie-Comeau, QC
 CA G4Z 3A6
 Contact: Jimmy K

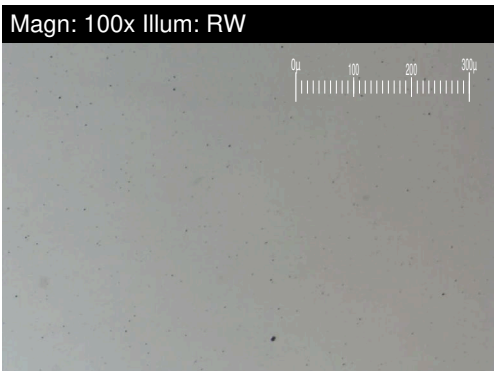
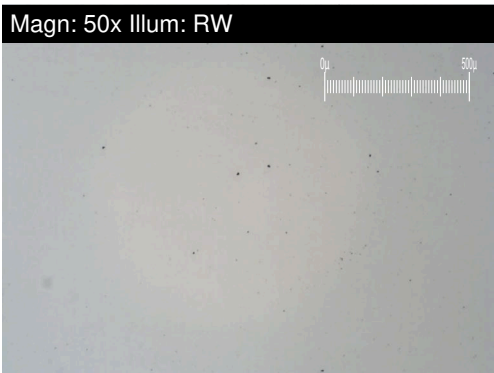
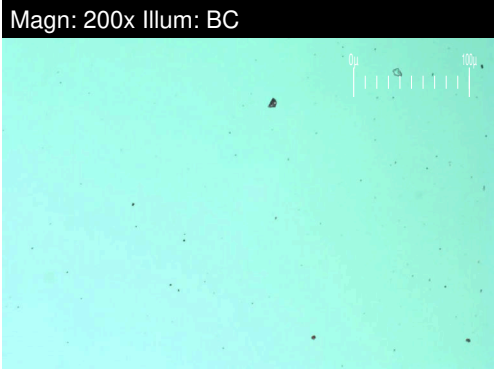
To discuss this sample report, contact Customer Service at 1-800-268-2131.
 Test denoted (*) outside scope of accreditation, (m) method modified, (e) tested at external lab.
 Validity of results and interpretation are based on the sample and information as supplied.

T: (418)296-5575
 F: (418)296-2205



FERROGRAPHY REPORT

Machine Id
PRESSION BC01
 Component
Hydraulic System
 Fluid
NOT GIVEN (--- LTR)

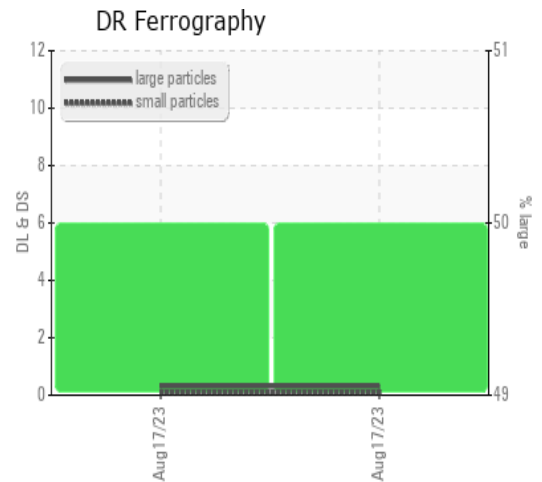


DR-FERROGRAPHY		method	limit/base	current	history1	history2
Large Particles		DR-Ferr*		0.3	---	---
Small Particles		DR-Ferr*		0.1	---	---
Total Particles		DR-Ferr*	>---	0.4	---	---
Large Particles Percentage	%	DR-Ferr*		50	---	---
Severity Index		DR-Ferr*		0	---	---

FERROGRAPHY		method	limit/base	current	history1	history2
Ferrous Rubbing	Scale 0-10	ASTM D7684*		1		
Ferrous Sliding	Scale 0-10	ASTM D7684*				
Ferrous Cutting	Scale 0-10	ASTM D7684*				
Ferrous Rolling	Scale 0-10	ASTM D7684*		1		
Ferrous Break-in	Scale 0-10	ASTM D7684*				
Ferrous Spheres	Scale 0-10	ASTM D7684*				
Ferrous Black Oxides	Scale 0-10	ASTM D7684*				
Ferrous Red Oxides	Scale 0-10	ASTM D7684*				
Ferrous Corrosive	Scale 0-10	ASTM D7684*				
Ferrous Other	Scale 0-10	ASTM D7684*				
Nonferrous Rubbing	Scale 0-10	ASTM D7684*				
Nonferrous Sliding	Scale 0-10	ASTM D7684*				
Nonferrous Cutting	Scale 0-10	ASTM D7684*				
Nonferrous Rolling	Scale 0-10	ASTM D7684*				
Nonferrous Other	Scale 0-10	ASTM D7684*				
Carbonaceous Material	Scale 0-10	ASTM D7684*				
Lubricant Degradation	Scale 0-10	ASTM D7684*				
Sand/Dirt	Scale 0-10	ASTM D7684*		1		
Fibres	Scale 0-10	ASTM D7684*				
Spheres	Scale 0-10	ASTM D7684*				
Other	Scale 0-10	ASTM D7684*		1		

WEAR

All component wear rates are normal. The direct-reading & analytical ferrographic results are normal indicating no abnormal wear in the system.



This page left intentionally blank