



OIL ANALYSIS REPORT

Sample Rating Trend



ISO



Machine Id
T001385 (S/N 23-M-05-2549)

Component
Hydraulic System

Fluid
PETRO CANADA HYDREX XV ALL SEASON HYDRAULIC OIL (--- GAL)

DIAGNOSIS

▲ Recommendation

We recommend you service the filters on this component. We recommend an early resample to monitor this condition.

Wear

All component wear rates are normal.

▲ Contamination

There is a moderate amount of silt (particulates < 14 microns in size) present in the oil.

Fluid Condition

The oil is still serviceable provided that the contaminant(s) can be reduced to acceptable levels.

SAMPLE INFORMATION

	method	limit/base	current	history1	history2
Sample Number	Client Info		WC0848404	---	---
Sample Date	Client Info		04 Aug 2023	---	---
Machine Age	hrs	Client Info	0	---	---
Oil Age	hrs	Client Info	0	---	---
Oil Changed	Client Info		N/A	---	---
Sample Status			ABNORMAL	---	---

WEAR METALS

	method	limit/base	current	history1	history2
Iron	ppm	ASTM D5185(m) >20	<1	---	---
Chromium	ppm	ASTM D5185(m) >20	0	---	---
Nickel	ppm	ASTM D5185(m) >20	<1	---	---
Titanium	ppm	ASTM D5185(m)	0	---	---
Silver	ppm	ASTM D5185(m)	0	---	---
Aluminum	ppm	ASTM D5185(m) >20	0	---	---
Lead	ppm	ASTM D5185(m) >20	0	---	---
Copper	ppm	ASTM D5185(m) >20	<1	---	---
Tin	ppm	ASTM D5185(m) >20	0	---	---
Antimony	ppm	ASTM D5185(m)	0	---	---
Vanadium	ppm	ASTM D5185(m)	0	---	---
Beryllium	ppm	ASTM D5185(m)	0	---	---
Cadmium	ppm	ASTM D5185(m)	0	---	---

ADDITIVES

	method	limit/base	current	history1	history2
Boron	ppm	ASTM D5185(m) 0	0	---	---
Barium	ppm	ASTM D5185(m) 0	<1	---	---
Molybdenum	ppm	ASTM D5185(m) 0	0	---	---
Manganese	ppm	ASTM D5185(m) 1	0	---	---
Magnesium	ppm	ASTM D5185(m) 0	<1	---	---
Calcium	ppm	ASTM D5185(m) 100	103	---	---
Phosphorus	ppm	ASTM D5185(m) 670	668	---	---
Zinc	ppm	ASTM D5185(m) 850	826	---	---
Sulfur	ppm	ASTM D5185(m) 1600	1513	---	---
Lithium	ppm	ASTM D5185(m)	<1	---	---

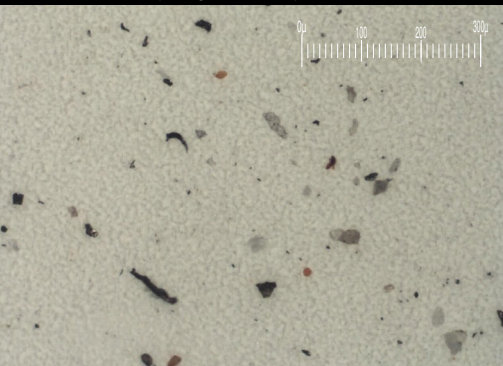
CONTAMINANTS

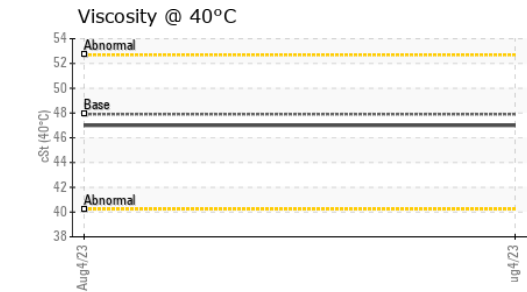
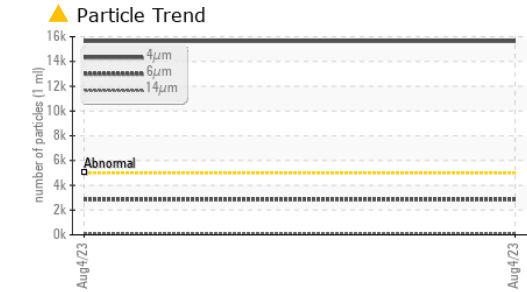
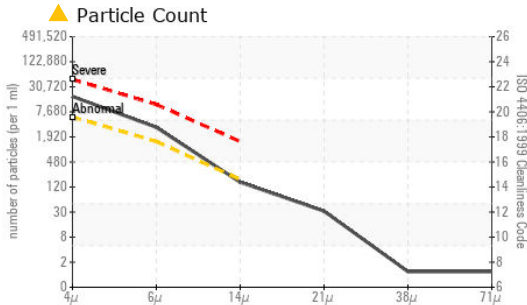
	method	limit/base	current	history1	history2
Silicon	ppm	ASTM D5185(m) >15	<1	---	---
Sodium	ppm	ASTM D5185(m)	0	---	---
Potassium	ppm	ASTM D5185(m) >20	<1	---	---

FLUID CLEANLINESS

	method	limit/base	current	history1	history2
Particles >4µm	ASTM D7647	>5000	▲ 15639	---	---
Particles >6µm	ASTM D7647	>1300	▲ 2851	---	---
Particles >14µm	ASTM D7647	>160	138	---	---
Particles >21µm	ASTM D7647	>40	28	---	---
Particles >38µm	ASTM D7647	>10	1	---	---
Particles >71µm	ASTM D7647	>3	1	---	---
Oil Cleanliness	ISO 4406 (c)	>19/17/14	▲ 21/19/14	---	---

Particle Filter (Magn: 100 x)



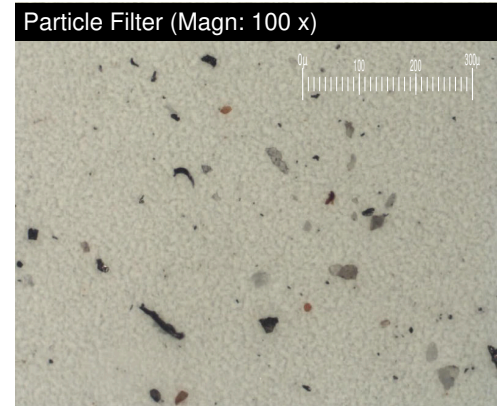
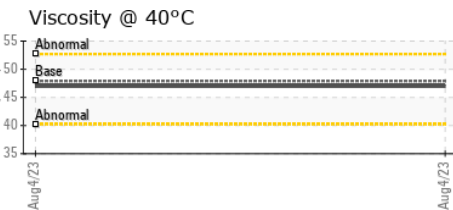
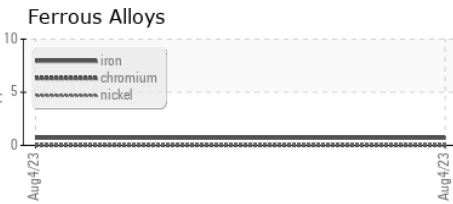


VISUAL	method	limit/base	current	history1	history2
White Metal	scalar	Visual*	NONE	VLITE	---
Yellow Metal	scalar	Visual*	NONE	NONE	---
Precipitate	scalar	Visual*	NONE	NONE	---
Silt	scalar	Visual*	NONE	NONE	---
Debris	scalar	Visual*	NONE	NONE	---
Sand/Dirt	scalar	Visual*	NONE	NONE	---
Appearance	scalar	Visual*	NORML	NORML	---
Odor	scalar	Visual*	NORML	NORML	---
Emulsified Water	scalar	Visual*	>0.05	NEG	---
Free Water	scalar	Visual*		NEG	---

FLUID PROPERTIES	method	limit/base	current	history1	history2
Visc @ 40°C	cSt	ASTM D7279(m)	47.9	47.0	---

SAMPLE IMAGES	method	limit/base	current	history1	history2
Color				<i>no image</i>	<i>no image</i>
Bottom				<i>no image</i>	<i>no image</i>
PrtFilter				<i>no image</i>	<i>no image</i>

GRAPHS



Laboratory : WearCheck - C8-1175 Appleby Line, Burlington, ON L7L 5H9
Sample No. : WC0848404 **Received** : 22 Aug 2023
Lab Number : **02577538** **Diagnosed** : 23 Aug 2023
Unique Number : 5630598 **Diagnostician** : Kevin Marson
Test Package : MOB 2 (Additional Tests: Bottom, BottomAnalysis, FilterPatch, PrtFilter)

To discuss this sample report, contact Customer Service at 1-800-268-2131.
 Test denoted (*) outside scope of accreditation, (m) method modified, (e) tested at external lab.
 Validity of results and interpretation are based on the sample and information as supplied.

RWF Industries
 873 Devonshire Ave.
 Woodstock, ON
 CA N4S 8Z4
 Contact: Henry Schepers
 henrys@rwfbron.com
 T:
 F: (519)421-0028