



# OIL ANALYSIS REPORT

Sample Rating Trend

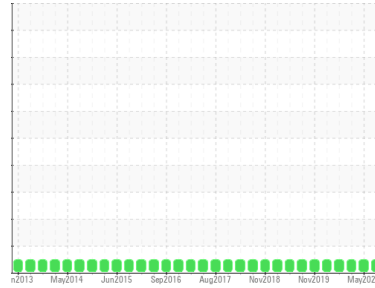
**NORMAL**



Machine Id  
**A.F PUSH/PULL - WALKING BEAM SLIDE**

Component  
**Gearbox**

Fluid  
**GEAR OIL (PAO) ISO 460 (40 LTR)**



## DIAGNOSIS

### Recommendation

Resample at the next service interval to monitor. Please specify the brand, type, and viscosity of the oil on your next sample.

### Wear

All component wear rates are normal.

### Contamination

There is no indication of any contamination in the oil.

### Fluid Condition

The AN level is acceptable for this fluid. The condition of the oil is suitable for further service.

## SAMPLE INFORMATION

	method	limit/base	current	history1	history2
Sample Number	Client Info		<b>WC0851658</b>	WC0822493	WC0777245
Sample Date	Client Info		<b>21 Aug 2023</b>	25 May 2023	08 Jan 2023
Machine Age	hrs	Client Info	<b>0</b>	0	0
Oil Age	hrs	Client Info	<b>0</b>	0	0
Oil Changed	Client Info		<b>N/A</b>	N/A	N/A
Sample Status			<b>NORMAL</b>	NORMAL	NORMAL

## WEAR METALS

	method	limit/base	current	history1	history2
PQ	ASTM D8184*		<b>3</b>	6	3
Iron	ppm	ASTM D5185(m) >200	<b>35</b>	35	33
Chromium	ppm	ASTM D5185(m) >15	<b>&lt;1</b>	<1	<1
Nickel	ppm	ASTM D5185(m) >15	<b>&lt;1</b>	<1	<1
Titanium	ppm	ASTM D5185(m)	<b>&lt;1</b>	0	0
Silver	ppm	ASTM D5185(m)	<b>0</b>	0	0
Aluminum	ppm	ASTM D5185(m) >25	<b>&lt;1</b>	0	0
Lead	ppm	ASTM D5185(m) >100	<b>0</b>	0	0
Copper	ppm	ASTM D5185(m) >200	<b>2</b>	<1	0
Tin	ppm	ASTM D5185(m) >25	<b>0</b>	0	0
Antimony	ppm	ASTM D5185(m) >5	<b>0</b>	<1	<1
Vanadium	ppm	ASTM D5185(m)	<b>0</b>	0	0
Beryllium	ppm	ASTM D5185(m)	<b>0</b>	0	0
Cadmium	ppm	ASTM D5185(m)	<b>0</b>	0	0

## ADDITIVES

	method	limit/base	current	history1	history2
Boron	ppm	ASTM D5185(m) 25	<b>23</b>	22	22
Barium	ppm	ASTM D5185(m) 12	<b>4</b>	4	3
Molybdenum	ppm	ASTM D5185(m) 5	<b>0</b>	0	0
Manganese	ppm	ASTM D5185(m)	<b>&lt;1</b>	<1	<1
Magnesium	ppm	ASTM D5185(m) 25	<b>&lt;1</b>	<1	0
Calcium	ppm	ASTM D5185(m) 25	<b>14</b>	13	13
Phosphorus	ppm	ASTM D5185(m) 375	<b>373</b>	397	384
Zinc	ppm	ASTM D5185(m) 25	<b>8</b>	7	7
Sulfur	ppm	ASTM D5185(m) 4900	<b>5093</b>	5501	5334
Lithium	ppm	ASTM D5185(m)	<b>&lt;1</b>	<1	<1

## CONTAMINANTS

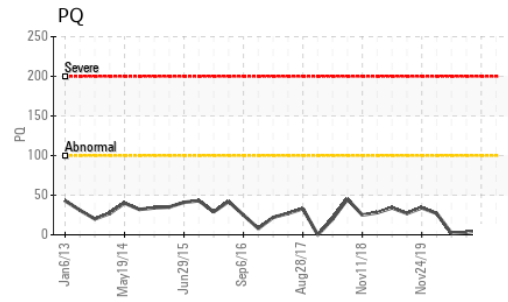
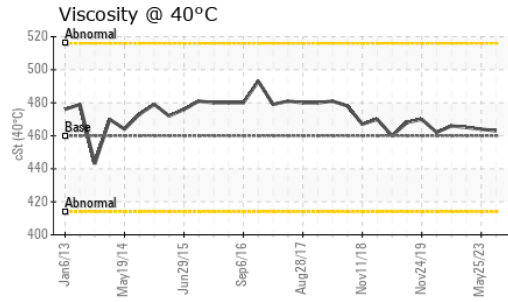
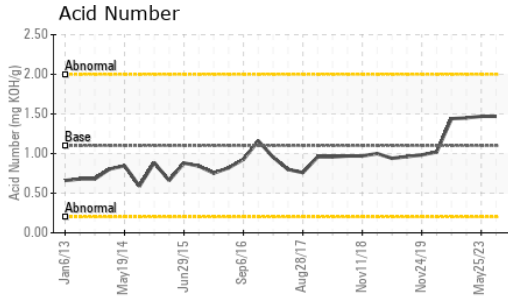
	method	limit/base	current	history1	history2
Silicon	ppm	ASTM D5185(m) >50	<b>2</b>	<1	<1
Sodium	ppm	ASTM D5185(m)	<b>5</b>	5	5
Potassium	ppm	ASTM D5185(m) >20	<b>6</b>	7	6

## FLUID DEGRADATION

	method	limit/base	current	history1	history2
Acid Number (AN)	mg KOH/g	ASTM D974* 1.10	<b>1.47</b>	1.47	1.45



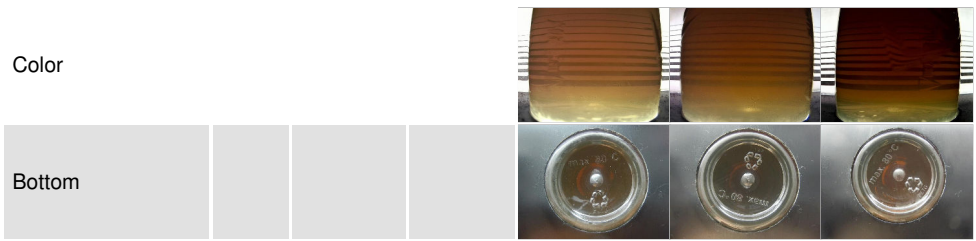
# OIL ANALYSIS REPORT



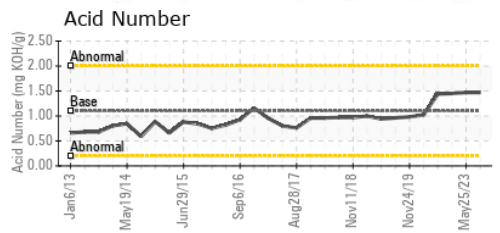
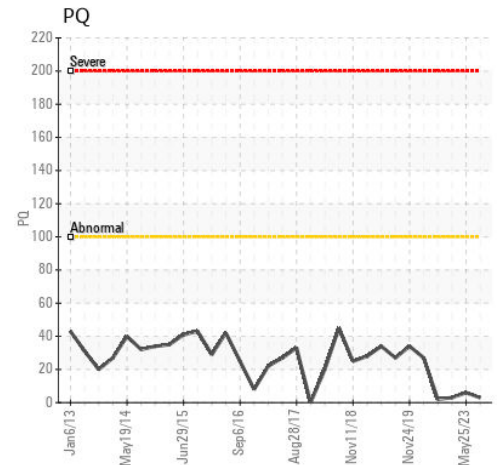
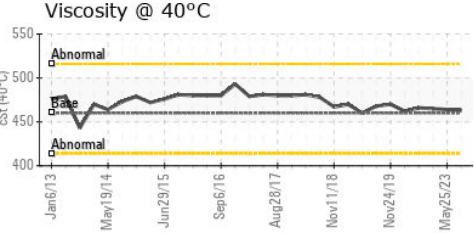
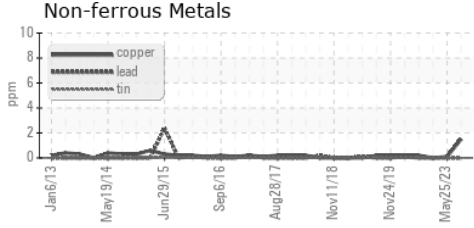
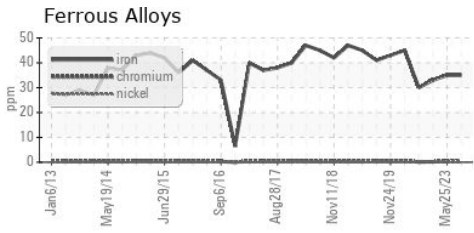
VISUAL	method	limit/base	current	history1	history2
White Metal	scalar	Visual*	NONE	NONE	NONE
Yellow Metal	scalar	Visual*	NONE	NONE	NONE
Precipitate	scalar	Visual*	NONE	NONE	NONE
Silt	scalar	Visual*	NONE	NONE	NONE
Debris	scalar	Visual*	NONE	NONE	NONE
Sand/Dirt	scalar	Visual*	NONE	NONE	NONE
Appearance	scalar	Visual*	NORML	NORML	NORML
Odor	scalar	Visual*	NORML	NORML	NORML
Emulsified Water	scalar	Visual*	>0.2	NEG	NEG
Free Water	scalar	Visual*		NEG	NEG

FLUID PROPERTIES	method	limit/base	current	history1	history2
Visc @ 40°C	cSt	ASTM D7279(m)	460	<b>463</b>	464

SAMPLE IMAGES	method	limit/base	current	history1	history2
---------------	--------	------------	---------	----------	----------



## GRAPHS



**Laboratory** : WearCheck - C8-1175 Appleby Line, Burlington, ON L7L 5H9  
**Sample No.** : WC0851658 **Received** : 22 Aug 2023  
**Lab Number** : **02577593** **Diagnosed** : 24 Aug 2023  
**Unique Number** : 5630653 **Diagnostician** : Wes Davis  
**Test Package** : IND 2 ( Additional Tests: TAN Man )

**Welded Tube of Canada**  
 191 Ridge Road  
 Welland, ON  
 CA L3B 5N7  
 Contact: Steve Holjak  
 sholjak@weldedtube.com  
 T: (905)669-1111  
 F: (905)695-1504

To discuss this sample report, contact Customer Service at 1-800-268-2131.  
 Test denoted (\*) outside scope of accreditation, (m) method modified, (e) tested at external lab.  
 Validity of results and interpretation are based on the sample and information as supplied.