



# PROBLEM SUMMARY

Sample Rating Trend

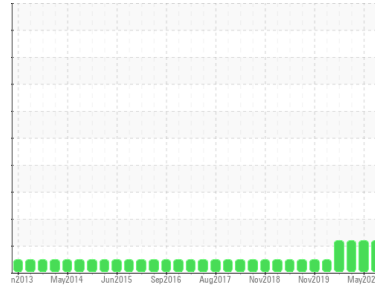
DEGRADATION



Machine Id  
**T.F LIFT - WALKING BEAM**

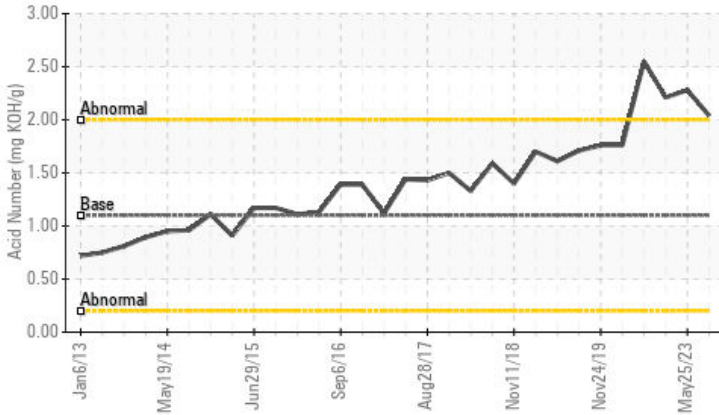
Component  
**Gearbox**

Fluid  
**GEAR OIL (PAO) ISO 460 (170 LTR)**



## COMPONENT CONDITION SUMMARY

### ▲ Acid Number



## RECOMMENDATION

The oil is near the end of its useful service life, recommend schedule an oil change. Resample at the next service interval to monitor. Please specify the brand, type, and viscosity of the oil on your next sample.

## PROBLEMATIC TEST RESULTS

Sample Status		<b>MARGINAL</b>	MARGINAL	MARGINAL		
Acid Number (AN)	mg KOH/g	ASTM D974*	1.10	▲ <b>2.04</b>	▲ 2.28	▲ 2.21

Customer Id: WEL191WEL  
Sample No.: WC0851642  
Lab Number: 02577603  
Test Package: IND 2



To manage this report scan the QR code

To discuss the diagnosis or test data:  
Kevin Marson +1 (289)291-4644 x4644  
[Kevin.Marson@wearcheck.com](mailto:Kevin.Marson@wearcheck.com)

To change component or sample information:  
Gloria Gonzalez +1 (289)291-4643 x4643  
[gloria.gonzalez@wearcheck.com](mailto:gloria.gonzalez@wearcheck.com)

## RECOMMENDED ACTIONS

Action	Status	Date	Done By	Description
Service/change Fluid	---	---	?	The oil is near the end of it's useful service life, recommend schedule an oil change.
Information Required	---	---	?	Please specify the brand, type, and viscosity of the oil on your next sample.

## HISTORICAL DIAGNOSIS

### 25 May 2023 Diag: Kevin Marson

#### DEGRADATION



The oil is near the end of it's useful service life, recommend schedule an oil change. Resample at the next service interval to monitor. Please specify the brand, type, and viscosity of the oil on your next sample. All component wear rates are normal. There is no indication of any contamination in the oil. The AN level is slightly above the recommended limit. The oil is no longer serviceable.

[view report](#)



### 08 Jan 2023 Diag: Kevin Marson

#### DEGRADATION



The oil is near the end of it's useful service life, recommend schedule an oil change. Resample at the next service interval to monitor. Please specify the brand, type, and viscosity of the oil on your next sample. All component wear rates are normal. There is no indication of any contamination in the oil. The AN level is slightly above the recommended limit. The oil is no longer serviceable.

[view report](#)



### 19 Sep 2022 Diag: Kevin Marson

#### DEGRADATION



The oil is near the end of it's useful service life, recommend schedule an oil change. Resample at the next service interval to monitor. Please specify the brand, type, and viscosity of the oil on your next sample. All component wear rates are normal. There is no indication of any contamination in the oil. The AN level is slightly above the recommended limit. The oil is no longer serviceable.

[view report](#)





# OIL ANALYSIS REPORT

Sample Rating Trend

DEGRADATION

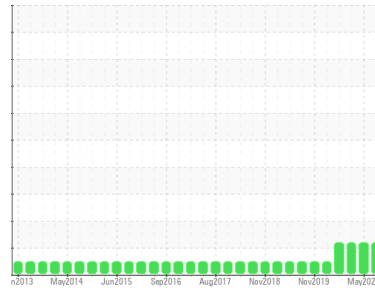
Machine Id  
**T.F LIFT - WALKING BEAM**

Component

**Gearbox**

Fluid

**GEAR OIL (PAO) ISO 460 (170 LTR)**



## DIAGNOSIS

### Recommendation

The oil is near the end of its useful service life, recommend schedule an oil change. Resample at the next service interval to monitor. Please specify the brand, type, and viscosity of the oil on your next sample.

### Wear

All component wear rates are normal.

### Contamination

There is no indication of any contamination in the oil.

### Fluid Condition

The AN level is slightly above the recommended limit. The oil is no longer serviceable.

## SAMPLE INFORMATION

	method	limit/base	current	history1	history2
Sample Number	Client Info		<b>WC0851642</b>	WC0822490	WC0777242
Sample Date	Client Info		<b>21 Aug 2023</b>	25 May 2023	08 Jan 2023
Machine Age	hrs	Client Info	<b>0</b>	0	0
Oil Age	hrs	Client Info	<b>0</b>	0	0
Oil Changed	Client Info		<b>N/A</b>	N/A	N/A
Sample Status			<b>MARGINAL</b>	MARGINAL	MARGINAL

## WEAR METALS

	method	limit/base	current	history1	history2	
Iron	ppm	ASTM D5185(m)	>200	<b>9</b>	8	9
Chromium	ppm	ASTM D5185(m)	>15	<b>0</b>	0	0
Nickel	ppm	ASTM D5185(m)	>15	<b>0</b>	0	0
Titanium	ppm	ASTM D5185(m)		<b>0</b>	0	<1
Silver	ppm	ASTM D5185(m)		<b>0</b>	0	0
Aluminum	ppm	ASTM D5185(m)	>25	<b>0</b>	0	<1
Lead	ppm	ASTM D5185(m)	>100	<b>0</b>	0	0
Copper	ppm	ASTM D5185(m)	>200	<b>&lt;1</b>	0	<1
Tin	ppm	ASTM D5185(m)	>25	<b>0</b>	0	0
Antimony	ppm	ASTM D5185(m)	>5	<b>0</b>	0	<1
Vanadium	ppm	ASTM D5185(m)		<b>0</b>	0	0
Beryllium	ppm	ASTM D5185(m)		<b>0</b>	0	0
Cadmium	ppm	ASTM D5185(m)		<b>0</b>	0	0

## ADDITIVES

	method	limit/base	current	history1	history2	
Boron	ppm	ASTM D5185(m)	25	<b>30</b>	28	28
Barium	ppm	ASTM D5185(m)	12	<b>0</b>	0	0
Molybdenum	ppm	ASTM D5185(m)	5	<b>0</b>	0	0
Manganese	ppm	ASTM D5185(m)		<b>&lt;1</b>	<1	<1
Magnesium	ppm	ASTM D5185(m)	25	<b>1</b>	<1	<1
Calcium	ppm	ASTM D5185(m)	25	<b>7</b>	6	5
Phosphorus	ppm	ASTM D5185(m)	375	<b>396</b>	416	406
Zinc	ppm	ASTM D5185(m)	25	<b>7</b>	6	5
Sulfur	ppm	ASTM D5185(m)	4900	<b>4441</b>	4821	4720
Lithium	ppm	ASTM D5185(m)		<b>&lt;1</b>	<1	<1

## CONTAMINANTS

	method	limit/base	current	history1	history2	
Silicon	ppm	ASTM D5185(m)	>50	<b>&lt;1</b>	0	<1
Sodium	ppm	ASTM D5185(m)		<b>&lt;1</b>	<1	<1
Potassium	ppm	ASTM D5185(m)	>20	<b>&lt;1</b>	<1	0

## FLUID CLEANLINESS

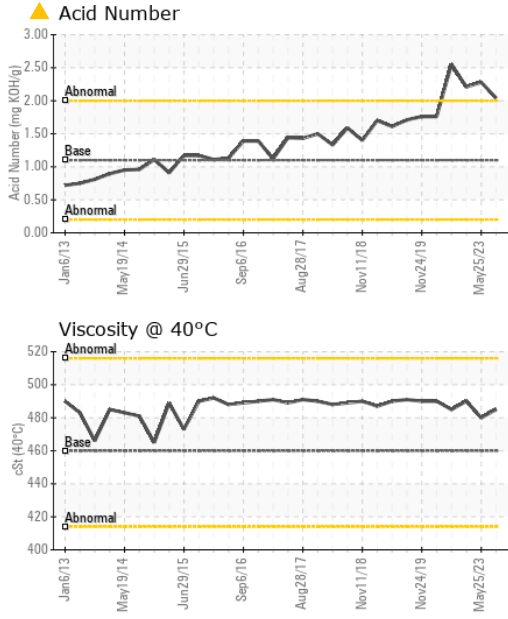
	method	limit/base	current	history1	history2
Particles >4µm	ASTM D7647	>20000	<b>37798</b>	---	---
Particles >6µm	ASTM D7647	>5000	<b>10730</b>	---	---
Particles >14µm	ASTM D7647	>640	<b>1004</b>	---	---
Particles >21µm	ASTM D7647	>160	<b>267</b>	---	---
Particles >38µm	ASTM D7647	>40	<b>4</b>	---	---
Particles >71µm	ASTM D7647	>10	<b>0</b>	---	---
Oil Cleanliness	ISO 4406 (c)	>21/19/16	<b>22/21/17</b>	---	---

## FLUID DEGRADATION

	method	limit/base	current	history1	history2	
Acid Number (AN)	mg KOH/g	ASTM D974*	1.10	<b>▲ 2.04</b>	▲ 2.28	▲ 2.21



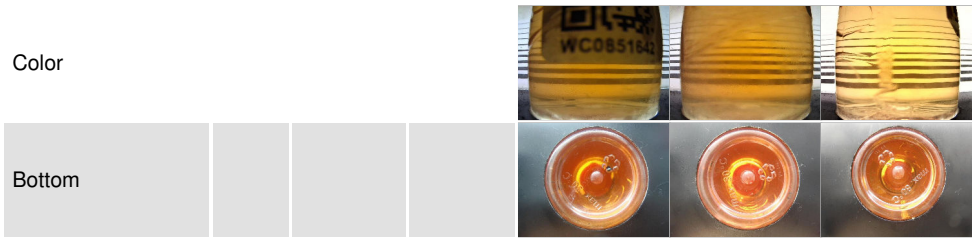
# OIL ANALYSIS REPORT



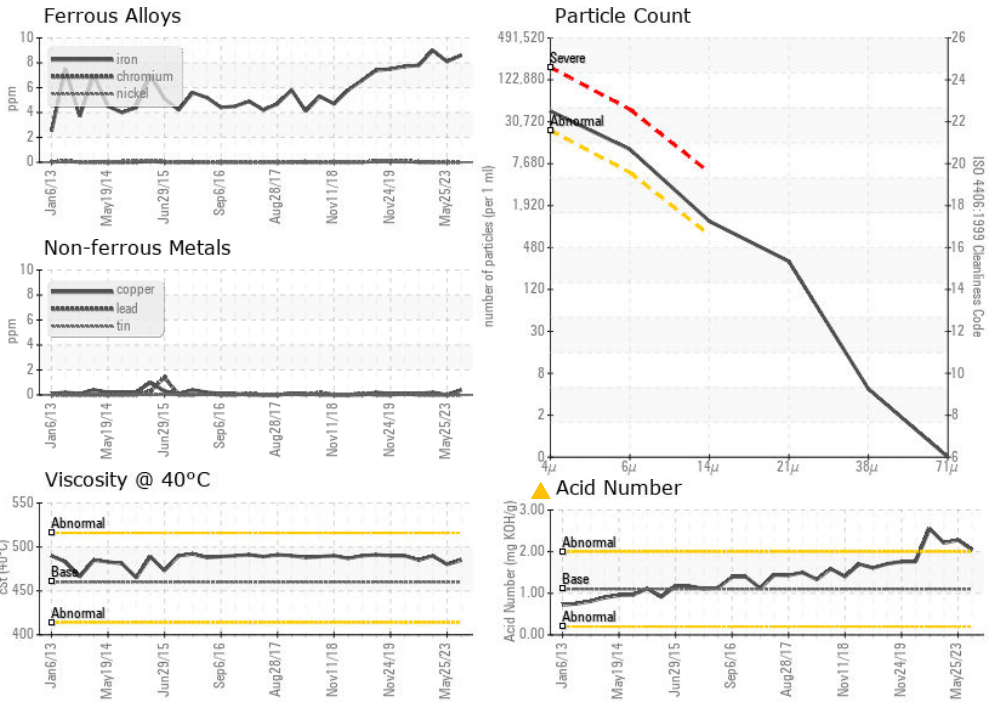
VISUAL	method	limit/base	current	history1	history2
White Metal	scalar	Visual*	NONE	NONE	NONE
Yellow Metal	scalar	Visual*	NONE	NONE	NONE
Precipitate	scalar	Visual*	NONE	NONE	NONE
Silt	scalar	Visual*	NONE	NONE	NONE
Debris	scalar	Visual*	NONE	NONE	NONE
Sand/Dirt	scalar	Visual*	NONE	NONE	NONE
Appearance	scalar	Visual*	NORML	NORML	NORML
Odor	scalar	Visual*	NORML	NORML	NORML
Emulsified Water	scalar	Visual*	>0.2	NEG	NEG
Free Water	scalar	Visual*		NEG	NEG

FLUID PROPERTIES	method	limit/base	current	history1	history2
Visc @ 40°C	cSt	ASTM D7279(m)	460	485	480

SAMPLE IMAGES	method	limit/base	current	history1	history2
---------------	--------	------------	---------	----------	----------



## GRAPHS



**Laboratory** : WearCheck - C8-1175 Appleby Line, Burlington, ON L7L 5H9  
**Sample No.** : WC0851642 **Received** : 22 Aug 2023  
**Lab Number** : 02577603 **Diagnosed** : 24 Aug 2023  
**Unique Number** : 5630663 **Diagnostician** : Kevin Marson  
**Test Package** : IND 2 ( Additional Tests: PrtCount )

**Welded Tube of Canada**  
 191 Ridge Road  
 Welland, ON  
 CA L3B 5N7  
 Contact: Steve Holjak  
 sholjak@weldedtube.com  
 T: (905)669-1111  
 F: (905)695-1504

To discuss this sample report, contact Customer Service at 1-800-268-2131.  
 Test denoted (\*) outside scope of accreditation, (m) method modified, (e) tested at external lab.  
 Validity of results and interpretation are based on the sample and information as supplied.