



OIL ANALYSIS REPORT

Sample Rating Trend

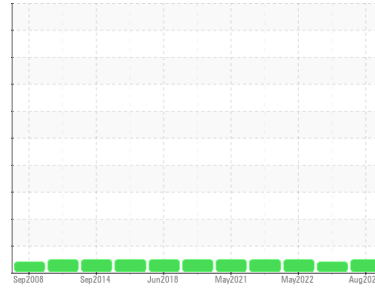
NORMAL



Machine Id
TECO WESTING HOUSE PUMP 1004

Component
Pump Motor

Fluid
SHELL TURBO T ISO 68 (6 GAL)



DIAGNOSIS

Recommendation

Resample at the next service interval to monitor. (Customer Sample Comment: Annual oil sampling test)

Wear

All component wear rates are normal.

Contamination

There is no indication of any contamination in the oil.

Fluid Condition

The AN level is acceptable for this fluid. The condition of the oil is suitable for further service.

SAMPLE INFORMATION

	method	limit/base	current	history1	history2
Sample Number	Client Info		WC0701220	WC0701233	WC0701232
Sample Date	Client Info		23 Aug 2023	11 May 2022	09 May 2022
Machine Age	mths	Client Info	20	0	0
Oil Age	mths	Client Info	0	0	0
Oil Changed	Client Info		N/A	N/A	N/A
Sample Status			NORMAL	ABNORMAL	NORMAL

WEAR METALS

	method	limit/base	current	history1	history2
PQ	ASTM D8184*		0	0	0
Iron	ppm	ASTM D5185(m) >20	<1	1	1
Chromium	ppm	ASTM D5185(m) >20	0	0	0
Nickel	ppm	ASTM D5185(m) >20	0	0	<1
Titanium	ppm	ASTM D5185(m)	0	0	0
Silver	ppm	ASTM D5185(m)	0	0	0
Aluminum	ppm	ASTM D5185(m) >20	0	0	0
Lead	ppm	ASTM D5185(m) >20	0	<1	<1
Copper	ppm	ASTM D5185(m) >20	<1	<1	3
Tin	ppm	ASTM D5185(m) >20	0	0	0
Antimony	ppm	ASTM D5185(m)	0	0	<1
Vanadium	ppm	ASTM D5185(m)	0	0	0
Beryllium	ppm	ASTM D5185(m)	0	0	0
Cadmium	ppm	ASTM D5185(m)	0	0	0

ADDITIVES

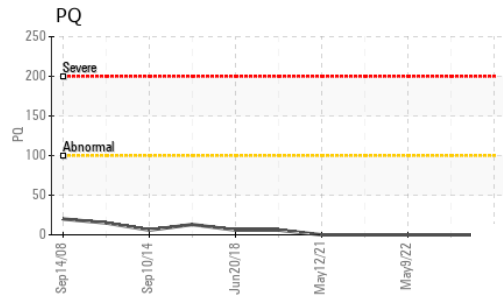
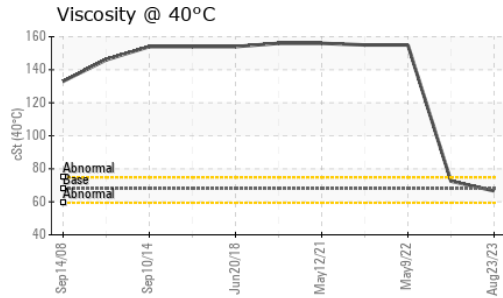
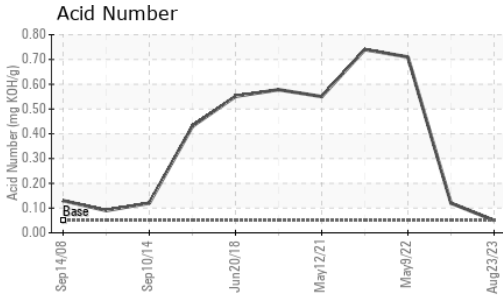
	method	limit/base	current	history1	history2
Boron	ppm	ASTM D5185(m)	0	0	0
Barium	ppm	ASTM D5185(m)	0	0	0
Molybdenum	ppm	ASTM D5185(m)	0	0	0
Manganese	ppm	ASTM D5185(m)	0	0	0
Magnesium	ppm	ASTM D5185(m)	<1	0	0
Calcium	ppm	ASTM D5185(m)	<1	1	<1
Phosphorus	ppm	ASTM D5185(m)	5	34	333
Zinc	ppm	ASTM D5185(m)	2	3	5
Sulfur	ppm	ASTM D5185(m)	96	784	635
Lithium	ppm	ASTM D5185(m)	<1	<1	<1

CONTAMINANTS

	method	limit/base	current	history1	history2
Silicon	ppm	ASTM D5185(m) >15	0	<1	<1
Sodium	ppm	ASTM D5185(m)	0	0	<1
Potassium	ppm	ASTM D5185(m) >20	<1	2	<1

FLUID DEGRADATION

	method	limit/base	current	history1	history2
Acid Number (AN)	mg KOH/g	ASTM D974* .05	0.05	0.12	0.71



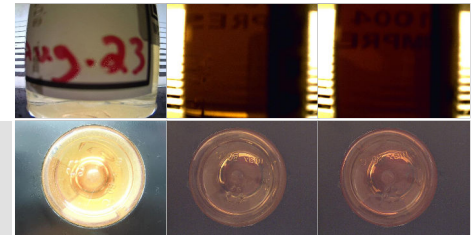
VISUAL	method	limit/base	current	history1	history2
White Metal	scalar	Visual*	NONE	NONE	NONE
Yellow Metal	scalar	Visual*	NONE	NONE	NONE
Precipitate	scalar	Visual*	NONE	NONE	NONE
Silt	scalar	Visual*	NONE	NONE	NONE
Debris	scalar	Visual*	NONE	NONE	NONE
Sand/Dirt	scalar	Visual*	NONE	NONE	NONE
Appearance	scalar	Visual*	NORML	NORML	NORML
Odor	scalar	Visual*	NORML	NORML	NORML
Emulsified Water	scalar	Visual*	>2	NEG	NEG
Free Water	scalar	Visual*		NEG	NEG

FLUID PROPERTIES	method	limit/base	current	history1	history2	
Visc @ 40°C	cSt	ASTM D7279(m)	68	66.6	▲ 72.5	155

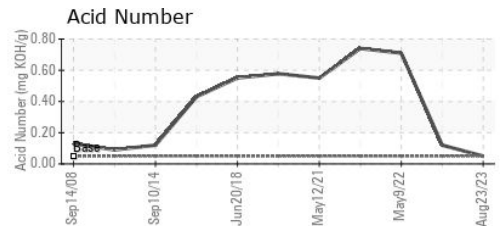
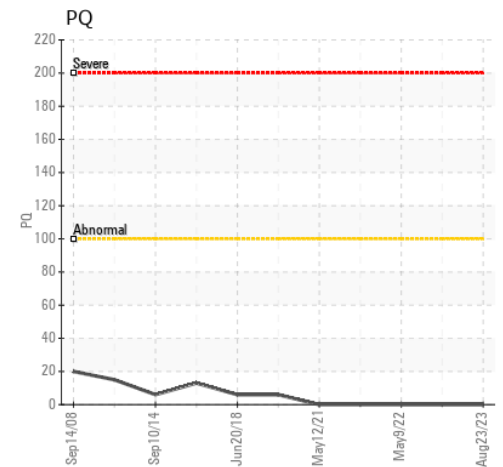
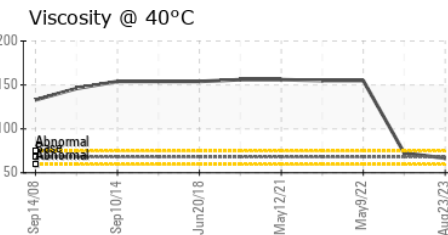
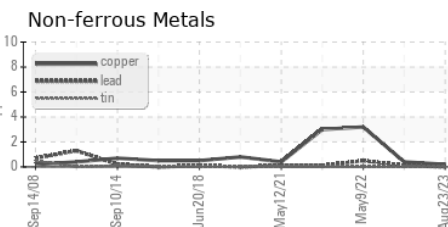
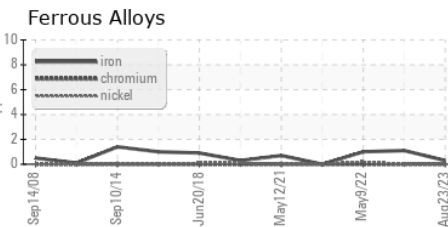
SAMPLE IMAGES	method	limit/base	current	history1	history2
---------------	--------	------------	---------	----------	----------

Color

Bottom



GRAPHS



Laboratory : WearCheck - C8-1175 Appleby Line, Burlington, ON L7L 5H9
 Sample No. : WC0701220
 Lab Number : 02578490
 Unique Number : 5631550
 Test Package : IND 2

NATIONAL RESEARCH COUNCIL
 1200 MONTREAL ROAD, BUILDING M-10
 OTTAWA, ON
 CA K1A 0R6
 Contact: Gary Lavigne
 gary.lavigne@nrc-cnrc.gc.ca
 T: (613)880-5857
 F: (613)952-7677

To discuss this sample report, contact Customer Service at 1-800-268-2131.
 Test denoted (*) outside scope of accreditation, (m) method modified, (e) tested at external lab.
 Validity of results and interpretation are based on the sample and information as supplied.