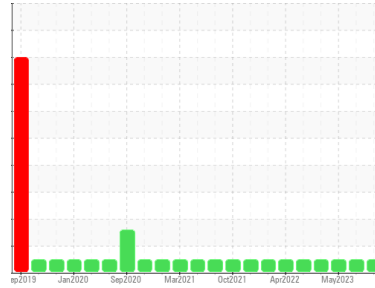




# OIL ANALYSIS REPORT

Sample Rating Trend



**NORMAL**



Area  
**(C-GCFF) SKYNORTH AIR LTD**  
 Machine Id  
**BEECHCRAFT PCE-85065 (S/N BB474)**  
 Component  
**Right Jet Turbine**  
 Fluid  
**EASTMAN TURBO OIL 2380 (--- GAL)**

## DIAGNOSIS

### Recommendation

Resample at the next service interval to monitor.  
 NOTE: Please provide information regarding reservoir capacity, filter type and micron rating with next sample.

### Wear

All component wear rates are normal. The direct-reading & analytical ferrographic results are normal indicating no abnormal wear in the system.

### Contaminants

The water content is negligible. There is no indication of any contamination in the oil.

### Oil Condition

The AN level is acceptable for this fluid. The condition of the oil is suitable for further service.

## SAMPLE INFORMATION

	method	limit/base	current	history1	history2
Sample Number	Client Info		<b>WC0835992</b>	WC0826221	WC0813112
Sample Date	Client Info		<b>24 Aug 2023</b>	27 Jun 2023	10 May 2023
TSN	hrs	Client Info	<b>17234</b>	17024	16833
TSO	hrs	Client Info	<b>604</b>	393	202
Oil Age	hrs	Client Info	<b>604</b>	393	202
Oil Changed		Client Info	<b>Not Chngd</b>	Not Chngd	Not Chngd
Sample Status			<b>NORMAL</b>	NORMAL	NORMAL

## WEAR METALS

	method	limit/base	current	history1	history2
Iron	ppm	ASTM D5185(m) >8	<b>0</b>	0	0
Chromium	ppm	ASTM D5185(m) >2	<b>0</b>	0	0
Nickel	ppm	ASTM D5185(m) >2	<b>0</b>	0	<1
Titanium	ppm	ASTM D5185(m) >2	<b>0</b>	0	0
Silver	ppm	ASTM D5185(m) >2	<b>0</b>	0	0
Aluminum	ppm	ASTM D5185(m) >2	<b>0</b>	<1	<1
Lead	ppm	ASTM D5185(m) >3	<b>0</b>	0	<1
Copper	ppm	ASTM D5185(m) >3	<b>&lt;1</b>	0	0
Tin	ppm	ASTM D5185(m) >2	<b>0</b>	0	0
Antimony	ppm	ASTM D5185(m)	<b>0</b>	0	0
Vanadium	ppm	ASTM D5185(m)	<b>0</b>	0	0
Beryllium	ppm	ASTM D5185(m)	<b>0</b>	0	0
Cadmium	ppm	ASTM D5185(m)	<b>0</b>	0	0

## ADDITIVES

	method	limit/base	current	history1	history2
Boron	ppm	ASTM D5185(m) 0	<b>0</b>	<1	<1
Barium	ppm	ASTM D5185(m) 0	<b>0</b>	0	0
Molybdenum	ppm	ASTM D5185(m) 0	<b>0</b>	0	0
Manganese	ppm	ASTM D5185(m)	<b>0</b>	0	0
Magnesium	ppm	ASTM D5185(m) 0	<b>0</b>	0	0
Calcium	ppm	ASTM D5185(m) 0	<b>&lt;1</b>	<1	0
Phosphorus	ppm	ASTM D5185(m) 2500	<b>2742</b>	2671	2792
Zinc	ppm	ASTM D5185(m) 0	<b>2</b>	2	<1
Sulfur	ppm	ASTM D5185(m) 0	<b>4</b>	2	2
Lithium	ppm	ASTM D5185(m)	<b>&lt;1</b>	<1	<1

## CONTAMINANTS

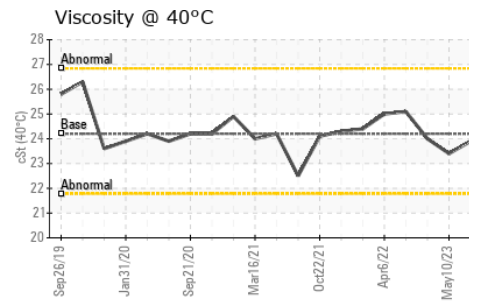
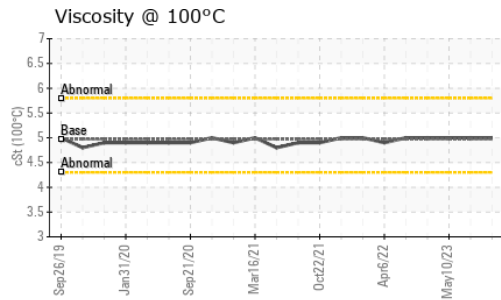
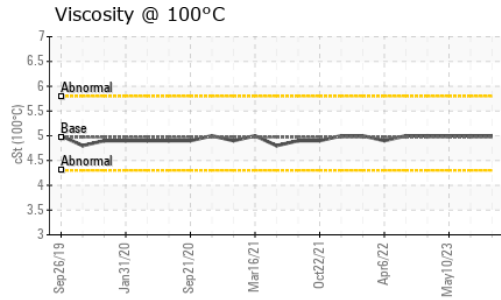
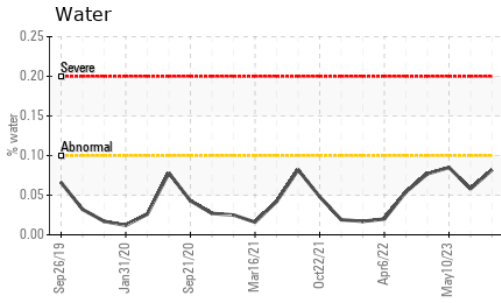
	method	limit/base	current	history1	history2
Silicon	ppm	ASTM D5185(m) >8	<b>3</b>	4	5
Sodium	ppm	ASTM D5185(m)	<b>&lt;1</b>	<1	<1
Potassium	ppm	ASTM D5185(m) >20	<b>&lt;1</b>	<1	<1
Water	%	ASTM D6304* >0.1	<b>0.082</b>	0.058	0.085
ppm Water	ppm	ASTM D6304* >1000	<b>823.6</b>	588.9	857.5

## FLUID DEGRADATION

	method	limit/base	current	history1	history2
Acid Number (AN)	mg KOH/g	ASTM D974* 0.43	<b>0.24</b>	0.25	0.35



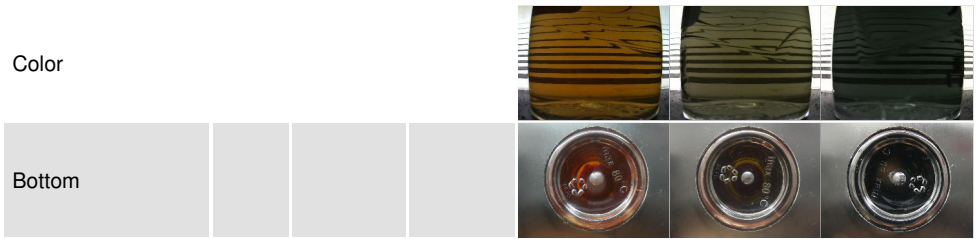
# OIL ANALYSIS REPORT



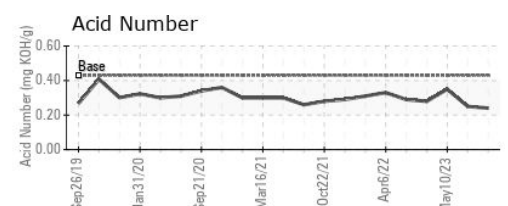
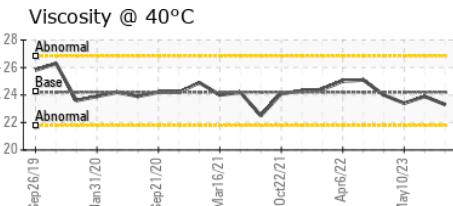
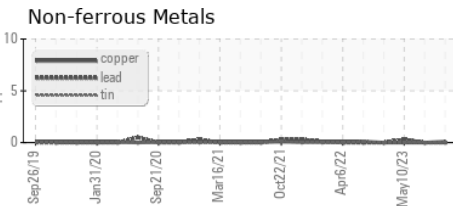
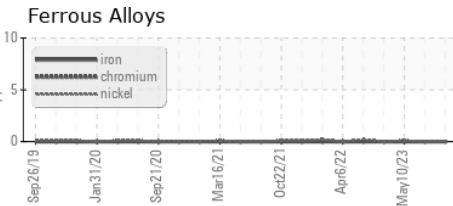
VISUAL	method	limit/base	current	history1	history2
White Metal	scalar	Visual*	NONE	NONE	NONE
Yellow Metal	scalar	Visual*	NONE	NONE	NONE
Precipitate	scalar	Visual*	NONE	NONE	NONE
Silt	scalar	Visual*	NONE	NONE	NONE
Debris	scalar	Visual*	NONE	NONE	NONE
Sand/Dirt	scalar	Visual*	NONE	NONE	NONE
Appearance	scalar	Visual*	NORML	NORML	NORML
Odor	scalar	Visual*	NORML	NORML	NORML
Emulsified Water	scalar	Visual*	>0.1	NEG	NEG
Free Water	scalar	Visual*		NEG	NEG

FLUID PROPERTIES	method	limit/base	current	history1	history2
Visc @ 40°C	cSt	ASTM D7279(m)	24.2	23.3	23.9
Visc @ 100°C	cSt	ASTM D7279(m)	4.97	5	5
Viscosity Index (VI)	Scale	ASTM D2270*	134	146	140

SAMPLE IMAGES	method	limit/base	current	history1	history2
---------------	--------	------------	---------	----------	----------



## GRAPHS



**Laboratory** : WearCheck - C8-1175 Appleby Line, Burlington, ON L7L 5H9  
**Sample No.** : WC0835992  
**Lab Number** : 02579096  
**Unique Number** : 5632156  
**Test Package** : AVI 3

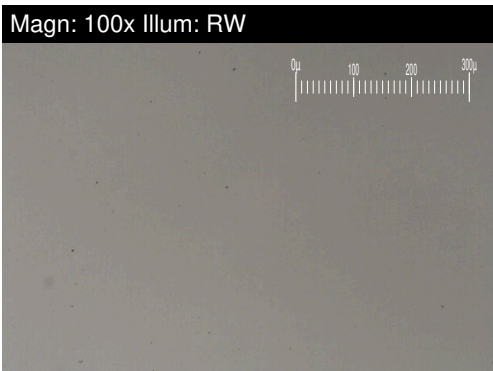
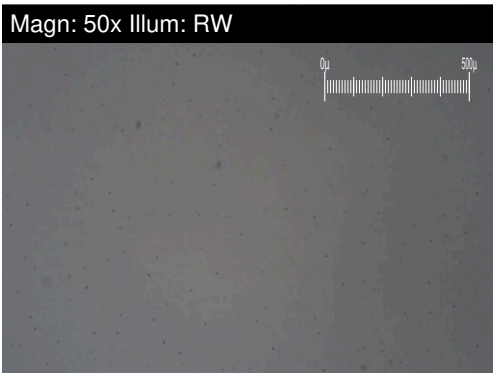
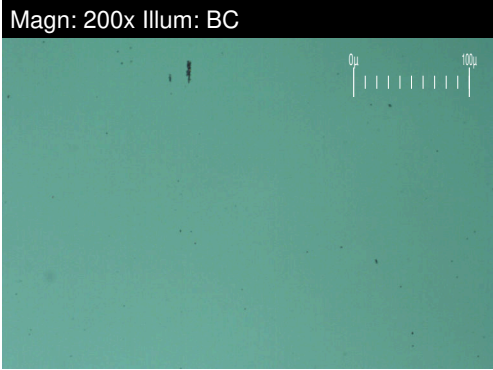
**Skynorth Air**  
 175 West Hangar Road  
 Winnipeg, MB  
 CA R3J 3Z1  
 Contact: Rowena Roopchand  
 parts@skynorthair.com  
 T: (204)338-8039  
 F:

To discuss this sample report, contact Customer Service at 1-800-268-2131.  
 Test denoted (\*) outside scope of accreditation, (m) method modified, (e) tested at external lab.  
 Validity of results and interpretation are based on the sample and information as supplied.



# FERROGRAPHY REPORT

Area  
**(C-GCFF) SKYNORTH AIR LTD**  
 Machine Id  
**BEECHCRAFT PCE-85065 (S/N BB474)**  
 Component  
**Right Jet Turbine**  
 Fluid  
**EASTMAN TURBO OIL 2380 (--- GAL)**

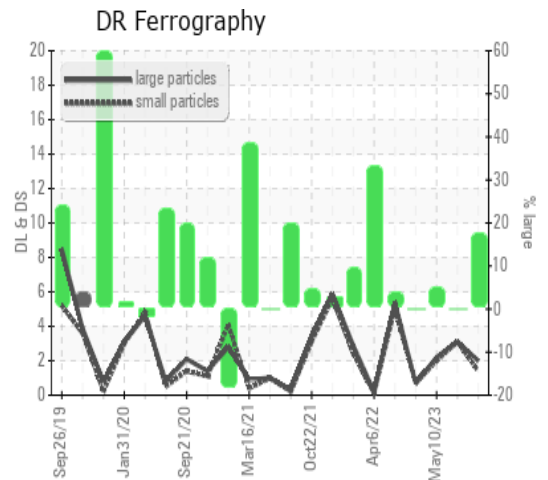


DR-FERROGRAPHY		method	limit/base	current	history1	history2
Large Particles		DR-Ferr*		<b>2.0</b>	3.1	2.2
Small Particles		DR-Ferr*		<b>1.4</b>	3.1	2.0
Total Particles		DR-Ferr*	>---	<b>3.4</b>	6.2	4.2
Large Particles Percentage	%	DR-Ferr*		<b>17.6</b>	0	4.8
Severity Index		DR-Ferr*		<b>1</b>	0	0

FERROGRAPHY		method	limit/base	current	history1	history2
Ferrous Rubbing	Scale 0-10	ASTM D7684*		1	1	1
Ferrous Sliding	Scale 0-10	ASTM D7684*				
Ferrous Cutting	Scale 0-10	ASTM D7684*				
Ferrous Rolling	Scale 0-10	ASTM D7684*		1	1	1
Ferrous Break-in	Scale 0-10	ASTM D7684*				
Ferrous Spheres	Scale 0-10	ASTM D7684*				
Ferrous Black Oxides	Scale 0-10	ASTM D7684*				
Ferrous Red Oxides	Scale 0-10	ASTM D7684*				
Ferrous Corrosive	Scale 0-10	ASTM D7684*				
Ferrous Other	Scale 0-10	ASTM D7684*				
Nonferrous Rubbing	Scale 0-10	ASTM D7684*				
Nonferrous Sliding	Scale 0-10	ASTM D7684*				
Nonferrous Cutting	Scale 0-10	ASTM D7684*				
Nonferrous Rolling	Scale 0-10	ASTM D7684*				
Nonferrous Other	Scale 0-10	ASTM D7684*				
Carbonaceous Material	Scale 0-10	ASTM D7684*				
Lubricant Degradation	Scale 0-10	ASTM D7684*				
Sand/Dirt	Scale 0-10	ASTM D7684*		1	1	1
Fibres	Scale 0-10	ASTM D7684*				
Spheres	Scale 0-10	ASTM D7684*				
Other	Scale 0-10	ASTM D7684*		1	1	1

### WEAR

All component wear rates are normal. The direct-reading & analytical ferrographic results are normal indicating no abnormal wear in the system.



*This page left intentionally blank*