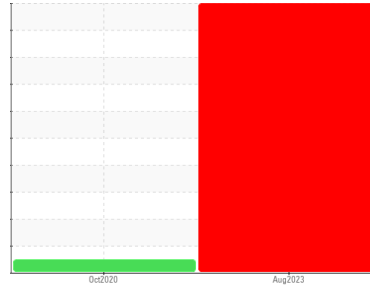




# OIL ANALYSIS REPORT

Sample Rating Trend



WEAR PARTICLES



Machine Id  
**263214180103**

Component  
**2 Filter**

Fluid  
**ESSO TERESSO ISO 68 (--- LTR)**

## DIAGNOSIS

### Recommendation

Il serait justifié de procéder à une inspection afin de déterminer la source de l'usure. Nous vous recommandons d'échantillonner de nouveau dès que possible afin de confirmer la situation.

### Wear Particles

Le filtre contenait une concentration élevée de particules de fatigue de roulement ferreuses et non ferreuses. Les particules ferreuses ont été digérées et analysées par spectroscopie ICP. Les alliages les plus probables sont l'acier faiblement allié 51XX (51XX), l'acier faiblement allié 61XX (61XX) et l'acier faiblement allié 41XX (41XX).

### Contaminants

Le filtre ne contenait que des niveaux normaux de contaminants et débris. Tous les niveaux des contaminants sont normaux

## SAMPLE INFORMATION

	method	limit/base	current	history1	history2
Sample Number	Client Info		<b>WC0803831</b>	PP	---
Sample Date	Client Info		<b>30 Aug 2023</b>	01 Oct 2020	---
Machine Age	yrs	Client Info	<b>0</b>	0	---
Oil Age	yrs	Client Info	<b>0</b>	0	---
Oil Changed	Client Info		<b>N/A</b>	N/A	---
Sample Status			<b>SEVERE</b>	NORMAL	---

## WEAR METALS

	method	limit/base	current	history1	history2
Iron	ppm	ASTM D5185(m)	<b>1212</b>	2126	---
Chromium	ppm	ASTM D5185(m)	<b>10</b>	3	---
Nickel	ppm	ASTM D5185(m)	<b>&lt;1</b>	<1	---
Titanium	ppm	ASTM D5185(m)	<b>0</b>	1	---
Silver	ppm	ASTM D5185(m)	<b>&lt;1</b>	0	---
Aluminum	ppm	ASTM D5185(m)	<b>&lt;1</b>	5	---
Lead	ppm	ASTM D5185(m)	<b>0</b>	2	---
Copper	ppm	ASTM D5185(m)	<b>2</b>	15	---
Tin	ppm	ASTM D5185(m)	<b>0</b>	6	---
Antimony	ppm	ASTM D5185(m)	<b>&lt;1</b>	<1	---
Vanadium	ppm	ASTM D5185(m)	<b>0</b>	<1	---
Beryllium	ppm	ASTM D5185(m)	<b>0</b>	0	---
Cadmium	ppm	ASTM D5185(m)	<b>0</b>	<1	---

## FERROGRAPHY

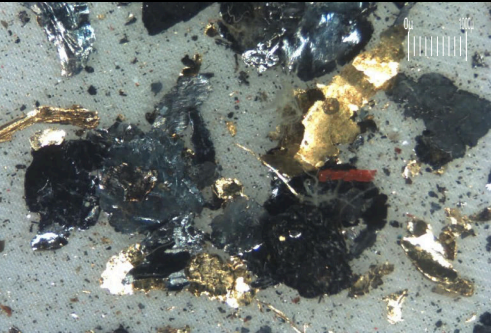
	method	limit/base	current	history1	history2
Ferrous Rubbing	Scale 0-10	ASTM D7684*	<b>3</b>	3	
Ferrous Sliding	Scale 0-10	ASTM D7684*			
Ferrous Cutting	Scale 0-10	ASTM D7684*			
Ferrous Rolling	Scale 0-10	ASTM D7684*	<b>4</b>	2	
Ferrous Break-in	Scale 0-10	ASTM D7684*			
Ferrous Spheres	Scale 0-10	ASTM D7684*			
Ferrous Black Oxides	Scale 0-10	ASTM D7684*		1	
Ferrous Red Oxides	Scale 0-10	ASTM D7684*			
Ferrous Corrosive	Scale 0-10	ASTM D7684*			
Ferrous Other	Scale 0-10	ASTM D7684*	<b>1</b>		
Nonferrous Rubbing	Scale 0-10	ASTM D7684*			
Nonferrous Sliding	Scale 0-10	ASTM D7684*	<b>1</b>		
Nonferrous Cutting	Scale 0-10	ASTM D7684*	<b>1</b>		
Nonferrous Rolling	Scale 0-10	ASTM D7684*	<b>2</b>		
Nonferrous Other	Scale 0-10	ASTM D7684*			
Sand/Dirt	Scale 0-10	ASTM D7684*	<b>1</b>	1	
Fibres	Scale 0-10	ASTM D7684*		1	
Spheres	Scale 0-10	ASTM D7684*			
Other	Scale 0-10	ASTM D7684*	<b>2</b>	2	
Patch Weight	mg	ASTM D7684*	<b>85</b>	17	---



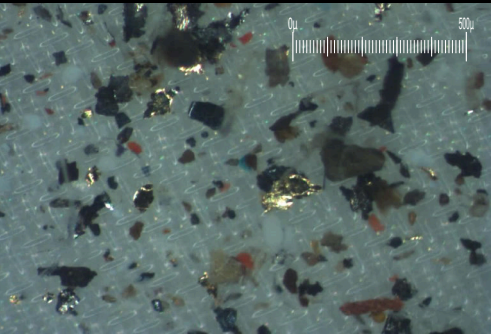
# FILTER REPORT

Machine Id  
**263214180103**  
 Component  
**2 Filter**  
 Fluid  
**ESSO TERESSO ISO 68 (--- LTR)**

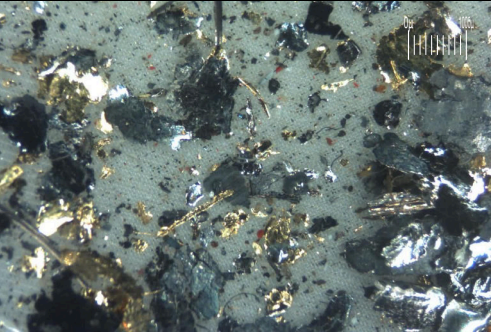
Magn: 10x Illum: RW



Magn: 60x Illum: RW



Magn: 10x Illum:



FERROGRAPHY		method	limit/base	current	history1	history2
Ferrous Rubbing	Scale 0-10	ASTM D7684*		3	3	
Ferrous Sliding	Scale 0-10	ASTM D7684*				
Ferrous Cutting	Scale 0-10	ASTM D7684*				
Ferrous Rolling	Scale 0-10	ASTM D7684*		4	2	
Ferrous Break-in	Scale 0-10	ASTM D7684*				
Ferrous Spheres	Scale 0-10	ASTM D7684*				
Ferrous Black Oxides	Scale 0-10	ASTM D7684*			1	
Ferrous Red Oxides	Scale 0-10	ASTM D7684*				
Ferrous Corrosive	Scale 0-10	ASTM D7684*				
Ferrous Other	Scale 0-10	ASTM D7684*		1		
Nonferrous Rubbing	Scale 0-10	ASTM D7684*				
Nonferrous Sliding	Scale 0-10	ASTM D7684*		1		
Nonferrous Cutting	Scale 0-10	ASTM D7684*		1		
Nonferrous Rolling	Scale 0-10	ASTM D7684*		2		
Nonferrous Other	Scale 0-10	ASTM D7684*				
Sand/Dirt	Scale 0-10	ASTM D7684*		1	1	
Fibres	Scale 0-10	ASTM D7684*			1	
Spheres	Scale 0-10	ASTM D7684*				
Other	Scale 0-10	ASTM D7684*		2	2	
Patch Weight	mg	ASTM D7684*		85	17	---

## WEAR

Le filtre contenait une concentration élevée de particules de fatigue de roulement ferreuses et non ferreuses. Les particules ferreuses ont été digérées et analysées par spectroscopie ICP. Les alliages les plus probables sont l'acier faiblement allié 51XX (51XX), l'acier faiblement allié 61XX (61XX) et l'acier faiblement allié 41XX (41XX).

*This page left intentionally blank*