

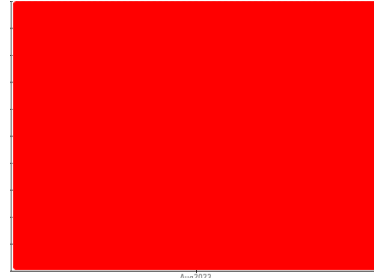


PROBLEM SUMMARY

Sample Rating Trend

VISUAL METAL

Machine Id
GEA NIRO SOAVI HOMOGENIZER NS5132H (S/N 14710)
 Component
Gearbox
 Fluid
KLUBER KLUBEROIL 4 UH1-220 N (55 LTR)



COMPONENT CONDITION SUMMARY

No relevant graphs to display

RECOMMENDATION

We advise that you check for visible metal particles in the oil. Wear particles and/or ppm levels are abnormally high indicating the need to review OEM limits with attention to components that may generate this type of wear. Include all test results and maintenance activities that have been performed since the abnormal condition was first detected in this review. The oil change at the time of sampling has been noted. An inspection for the source(s) of wear may be warranted at this time. We recommend an early resample to monitor this condition. Re-sampling is suggested to confirm test results prior to significant maintenance activities being performed. Please indicate that this is a resample on your Sample Information Form (SIF).

PROBLEMATIC TEST RESULTS

Sample Status				SEVERE	---	---
Ferrous Rubbing	Scale 0-10	ASTM D7684*		8		
Ferrous Rolling	Scale 0-10	ASTM D7684*		4		
White Metal	scalar	Visual*		HEAVY	---	---
PrtFilter				no image	no image	

Customer Id: COCPET
 Sample No.: PP
 Lab Number: 02580798
 Test Package: IND 3



To manage this report scan the QR code

To discuss the diagnosis or test data:
 Kevin Marson +1 (289)291-4644 x4644
Kevin.Marson@wearcheck.com

To change component or sample information:
 Gloria Gonzalez +1 (289)291-4643 x4643
gloria.gonzalez@wearcheck.com

RECOMMENDED ACTIONS

Action	Status	Date	Done By	Description
Inspect Wear Source	---	---	?	An inspection for the source(s) of wear may be warranted at this time.
Monitor	---	---	?	Wear particles and/or ppm levels are abnormally high indicating the need to review OEM limits with attention to components that may generate this type of wear. Include all test results and maintenance activities that have been performed since the abnormal condition was first detected in this review.
Resample	---	---	?	We recommend an early resample to monitor this condition. Re-sampling is suggested to confirm test results prior to significant maintenance activities being performed. Please indicate that this is a resample on your Sample Information Form (SIF).
Alert	---	---	?	Wear particles and/or ppm levels are abnormally high indicating the need to review OEM limits with attention to components that may generate this type of wear. Include all test results and maintenance activities that have been performed since the abnormal condition was first detected in this review.
Check For Visual Metal	---	---	?	We advise that you check for visible metal particles in the oil.

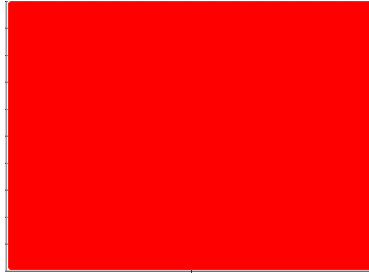
HISTORICAL DIAGNOSIS



OIL ANALYSIS REPORT

Sample Rating Trend

VISUAL METAL



Machine Id
GEA NIRO SOAVI HOMOGENIZER NS5132H (S/N 14710)

Component
Gearbox

Fluid
KLUBER KLUBEROIL 4 UH1-220 N (55 LTR)

DIAGNOSIS

Recommendation

We advise that you check for visible metal particles in the oil. Wear particles and/or ppm levels are abnormally high indicating the need to review OEM limits with attention to components that may generate this type of wear. Include all test results and maintenance activities that have been performed since the abnormal condition was first detected in this review. The oil change at the time of sampling has been noted. An inspection for the source(s) of wear may be warranted at this time. We recommend an early resample to monitor this condition. Re-sampling is suggested to confirm test results prior to significant maintenance activities being performed. Please indicate that this is a resample on your Sample Information Form (SIF).

Wear

Wear particle analysis indicates that the ferrous rolling and ferrous rubbing particles are abnormal. High concentration of visible metal present. Gear wear is indicated.

Contaminants

There is no indication of any contamination in the oil.

Oil Condition

The AN level is acceptable for this fluid. The oil is no longer serviceable as a result of the abnormal and/or severe wear.

SAMPLE INFORMATION

	method	limit/base	current	history1	history2
Sample Number	Client Info		PP	---	---
Sample Date	Client Info		30 Aug 2023	---	---
Machine Age	hrs	Client Info	0	---	---
Oil Age	hrs	Client Info	776	---	---
Oil Changed	Client Info		Changed	---	---
Sample Status			SEVERE	---	---

WEAR METALS

	method	limit/base	current	history1	history2
PQ	ASTM D8184*		210	---	---
Iron	ppm	ASTM D5185(m) >200	137	---	---
Chromium	ppm	ASTM D5185(m) >15	0	---	---
Nickel	ppm	ASTM D5185(m) >15	0	---	---
Titanium	ppm	ASTM D5185(m)	0	---	---
Silver	ppm	ASTM D5185(m)	0	---	---
Aluminum	ppm	ASTM D5185(m) >25	0	---	---
Lead	ppm	ASTM D5185(m) >100	14	---	---
Copper	ppm	ASTM D5185(m) >200	28	---	---
Tin	ppm	ASTM D5185(m) >25	7	---	---
Antimony	ppm	ASTM D5185(m) >5	0	---	---
Vanadium	ppm	ASTM D5185(m)	0	---	---
Beryllium	ppm	ASTM D5185(m)	0	---	---
Cadmium	ppm	ASTM D5185(m)	0	---	---

ADDITIVES

	method	limit/base	current	history1	history2
Boron	ppm	ASTM D5185(m)	2	---	---
Barium	ppm	ASTM D5185(m)	0	---	---
Molybdenum	ppm	ASTM D5185(m)	0	---	---
Manganese	ppm	ASTM D5185(m)	<1	---	---
Magnesium	ppm	ASTM D5185(m)	0	---	---
Calcium	ppm	ASTM D5185(m)	<1	---	---
Phosphorus	ppm	ASTM D5185(m)	685	---	---
Zinc	ppm	ASTM D5185(m)	11	---	---
Sulfur	ppm	ASTM D5185(m)	859	---	---
Lithium	ppm	ASTM D5185(m)	<1	---	---

CONTAMINANTS

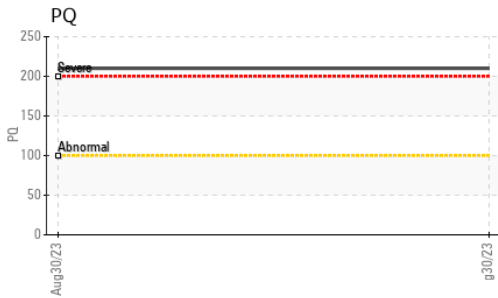
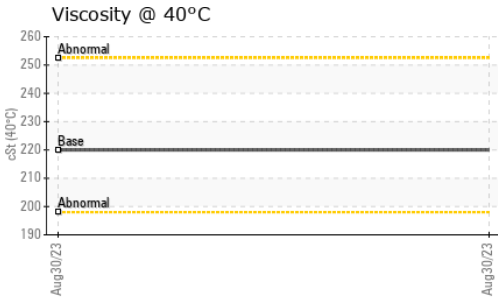
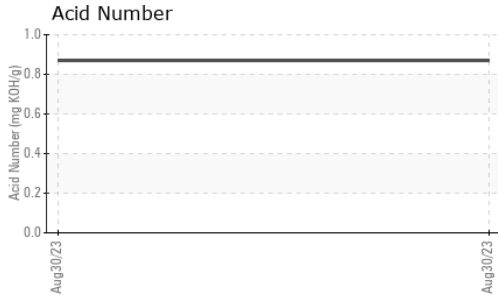
	method	limit/base	current	history1	history2
Silicon	ppm	ASTM D5185(m) >50	21	---	---
Sodium	ppm	ASTM D5185(m)	<1	---	---
Potassium	ppm	ASTM D5185(m) >20	0	---	---

FLUID DEGRADATION

	method	limit/base	current	history1	history2
Acid Number (AN)	mg KOH/g	ASTM D974*	0.87	---	---



OIL ANALYSIS REPORT



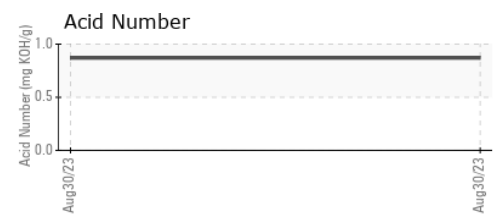
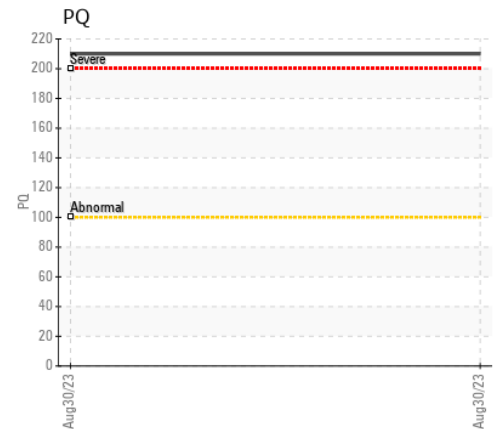
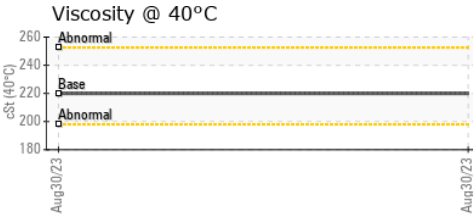
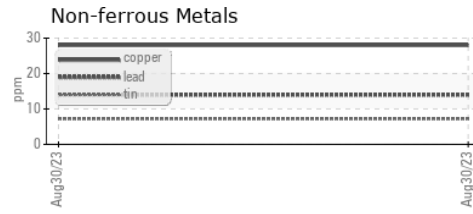
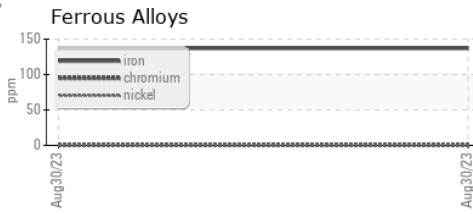
VISUAL	method	limit/base	current	history1	history2
White Metal	scalar	Visual*	NONE	● HEAVY	---
Yellow Metal	scalar	Visual*	NONE	NONE	---
Precipitate	scalar	Visual*	NONE	NONE	---
Silt	scalar	Visual*	NONE	NONE	---
Debris	scalar	Visual*	NONE	VLITE	---
Sand/Dirt	scalar	Visual*	NONE	NONE	---
Appearance	scalar	Visual*	NORML	NORML	---
Odor	scalar	Visual*	NORML	NORML	---
Emulsified Water	scalar	Visual*	>0.2	NEG	---
Free Water	scalar	Visual*		NEG	---

FLUID PROPERTIES	method	limit/base	current	history1	history2
Visc @ 40°C	cSt	ASTM D7279(m)	220	---	---

SAMPLE IMAGES	method	limit/base	current	history1	history2
---------------	--------	------------	---------	----------	----------

Color		no image	no image
Bottom		no image	no image
PrtFilter		no image	no image

GRAPHS

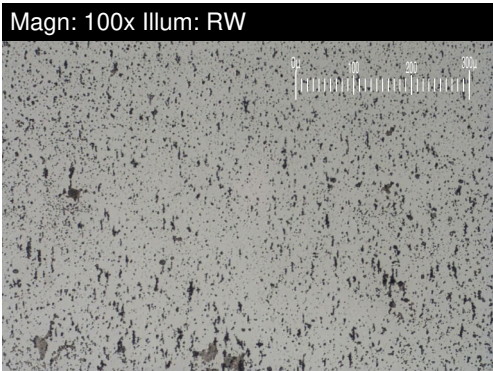
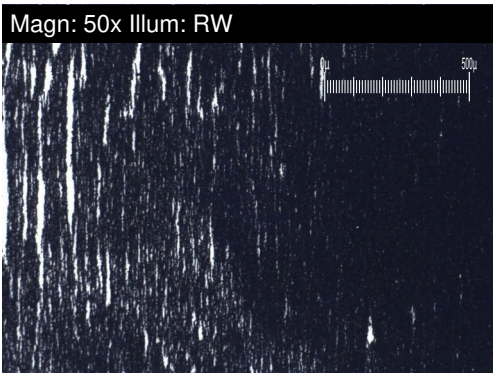
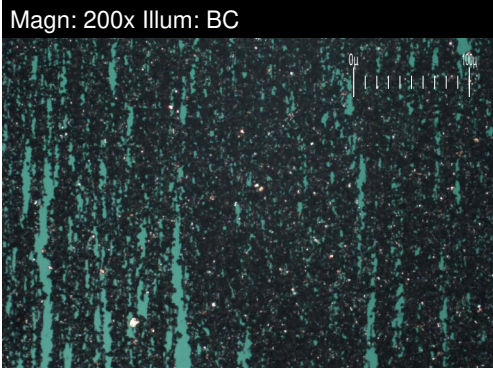


Laboratory : WearCheck - C8-1175 Appleby Line, Burlington, ON L7L 5H9 **COCA COLA FOODS CANADA INC.**
Sample No. : PP **Received** : 06 Sep 2023 **781 LANSDOWNE STREET W.**
Lab Number : 02580798 **Diagnosed** : 11 Sep 2023 **PETERBOROUGH, ON**
Unique Number : 5633858 **Diagnostician** : Kevin Marson **CA K9J 1Z2**
Test Package : IND 3 (Additional Tests: BottomAnalysis, FILTERPATCH, TAN Man) **Contact: Alfredo Rodriguez**

To discuss this sample report, contact Customer Service at 1-800-268-2131. **alfredorodriguez@cocca-cola.com**
 Test denoted (*) outside scope of accreditation, (m) method modified, (e) tested at external lab. **T: (705)750-2287**
 Validity of results and interpretation are based on the sample and information as supplied. **F: (705)742-4016**

FERROGRAPHY REPORT

Machine Id
GEA NIRO SOAVI HOMOGENIZER NS5132H (S/N 14710)
 Component
Gearbox
 Fluid
KLUBER KLUBEROIL 4 UH1-220 N (55 LTR)

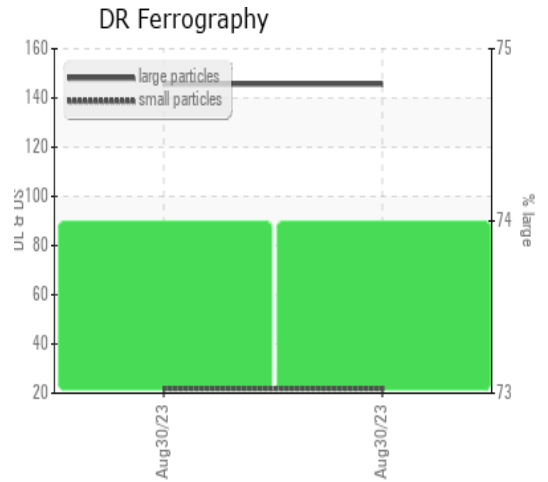


DR-FERROGRAPHY		method	limit/base	current	history1	history2
Large Particles		DR-Ferr*		145.6	---	---
Small Particles		DR-Ferr*		21.8	---	---
Total Particles		DR-Ferr*	>---	167.4	---	---
Large Particles Percentage	%	DR-Ferr*		74	---	---
Severity Index		DR-Ferr*		18025	---	---

FERROGRAPHY		method	limit/base	current	history1	history2
Ferrous Rubbing	Scale 0-10	ASTM D7684*		▲ 8		
Ferrous Sliding	Scale 0-10	ASTM D7684*				
Ferrous Cutting	Scale 0-10	ASTM D7684*				
Ferrous Rolling	Scale 0-10	ASTM D7684*		▲ 4		
Ferrous Break-in	Scale 0-10	ASTM D7684*				
Ferrous Spheres	Scale 0-10	ASTM D7684*				
Ferrous Black Oxides	Scale 0-10	ASTM D7684*		2		
Ferrous Red Oxides	Scale 0-10	ASTM D7684*				
Ferrous Corrosive	Scale 0-10	ASTM D7684*		2		
Ferrous Other	Scale 0-10	ASTM D7684*				
Nonferrous Rubbing	Scale 0-10	ASTM D7684*				
Nonferrous Sliding	Scale 0-10	ASTM D7684*				
Nonferrous Cutting	Scale 0-10	ASTM D7684*				
Nonferrous Rolling	Scale 0-10	ASTM D7684*				
Nonferrous Other	Scale 0-10	ASTM D7684*				
Carbonaceous Material	Scale 0-10	ASTM D7684*				
Lubricant Degradation	Scale 0-10	ASTM D7684*		1		
Sand/Dirt	Scale 0-10	ASTM D7684*		1		
Fibres	Scale 0-10	ASTM D7684*				
Spheres	Scale 0-10	ASTM D7684*				
Other	Scale 0-10	ASTM D7684*		2		

WEAR

Wear particle analysis indicates that the ferrous rolling and ferrous rubbing particles are abnormal. High concentration of visible metal present. Gear wear is indicated.



This page left intentionally blank