



# OIL ANALYSIS REPORT

Sample Rating Trend

**NORMAL**



Machine Id  
**BEECHCRAFT CGSKU (S/N GG32017)**

Component  
**Left Jet Turbine**

Fluid  
**ESSO EXXON TURBO OIL 2380 (--- QTS)**



## DIAGNOSIS

### Recommendation

Resample at the next service interval to monitor.  
NOTE: Please provide information regarding reservoir capacity, filter type and micron rating with next sample.

### Wear

All component wear rates are normal. The direct-reading & analytical ferrographic results are normal indicating no abnormal wear in the system.

### Contaminants

The water content is negligible. There is no indication of any contamination in the oil.

### Oil Condition

The AN level is acceptable for this fluid. The condition of the oil is suitable for further service.

## SAMPLE INFORMATION

	method	limit/base	current	history1	history2
Sample Number	Client Info		<b>WC0816805</b>	---	---
Sample Date	Client Info		<b>26 Sep 2023</b>	---	---
TSN	hrs	Client Info	<b>0</b>	---	---
TSO	hrs	Client Info	<b>3443</b>	---	---
Oil Age	hrs	Client Info	<b>567</b>	---	---
Oil Changed		Client Info	<b>Changed</b>	---	---
Sample Status			<b>NORMAL</b>	---	---

## WEAR METALS

	method	limit/base	current	history1	history2
Iron	ppm	ASTM D5185(m)	>8	<b>0</b>	---
Chromium	ppm	ASTM D5185(m)	>2	<b>0</b>	---
Nickel	ppm	ASTM D5185(m)	>2	<b>0</b>	---
Titanium	ppm	ASTM D5185(m)	>2	<b>0</b>	---
Silver	ppm	ASTM D5185(m)	>2	<b>&lt;1</b>	---
Aluminum	ppm	ASTM D5185(m)	>2	<b>0</b>	---
Lead	ppm	ASTM D5185(m)	>3	<b>&lt;1</b>	---
Copper	ppm	ASTM D5185(m)	>3	<b>&lt;1</b>	---
Tin	ppm	ASTM D5185(m)	>2	<b>0</b>	---
Antimony	ppm	ASTM D5185(m)		<b>0</b>	---
Vanadium	ppm	ASTM D5185(m)		<b>0</b>	---
Beryllium	ppm	ASTM D5185(m)		<b>0</b>	---
Cadmium	ppm	ASTM D5185(m)		<b>0</b>	---

## ADDITIVES

	method	limit/base	current	history1	history2
Boron	ppm	ASTM D5185(m)	6.3	<b>&lt;1</b>	---
Barium	ppm	ASTM D5185(m)		<b>&lt;1</b>	---
Molybdenum	ppm	ASTM D5185(m)	0.0	<b>0</b>	---
Manganese	ppm	ASTM D5185(m)		<b>0</b>	---
Magnesium	ppm	ASTM D5185(m)	0.0	<b>0</b>	---
Calcium	ppm	ASTM D5185(m)	0.1	<b>&lt;1</b>	---
Phosphorus	ppm	ASTM D5185(m)	2931	<b>2743</b>	---
Zinc	ppm	ASTM D5185(m)	0.1	<b>&lt;1</b>	---
Sulfur	ppm	ASTM D5185(m)	0.0	<b>8</b>	---
Lithium	ppm	ASTM D5185(m)		<b>&lt;1</b>	---

## CONTAMINANTS

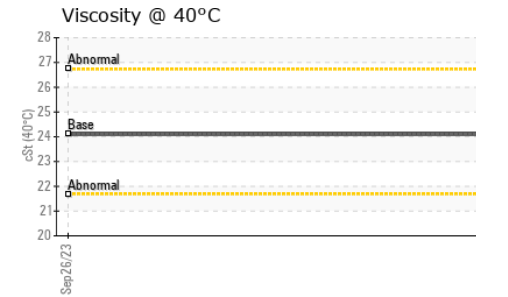
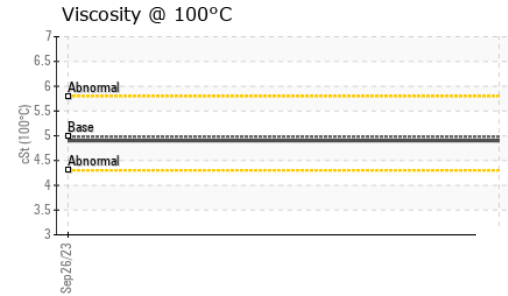
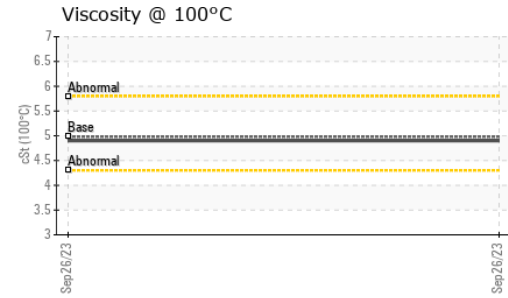
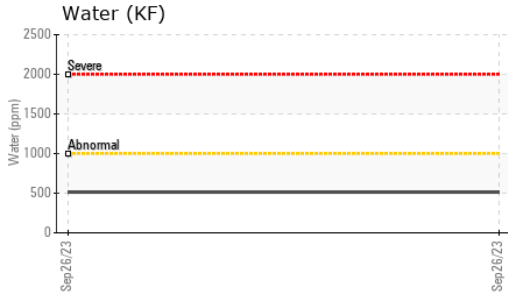
	method	limit/base	current	history1	history2
Silicon	ppm	ASTM D5185(m)	>8	<b>&lt;1</b>	---
Sodium	ppm	ASTM D5185(m)		<b>&lt;1</b>	---
Potassium	ppm	ASTM D5185(m)	>20	<b>0</b>	---
Water	%	ASTM D6304*	>0.1	<b>0.051</b>	---
ppm Water	ppm	ASTM D6304*	>1000	<b>513.6</b>	---

## FLUID DEGRADATION

	method	limit/base	current	history1	history2
Acid Number (AN)	mg KOH/g	ASTM D974*	.38	<b>0.37</b>	---



# OIL ANALYSIS REPORT

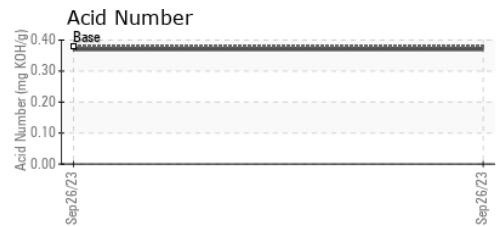
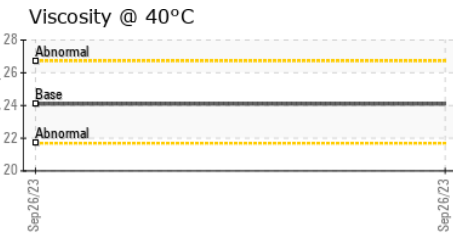
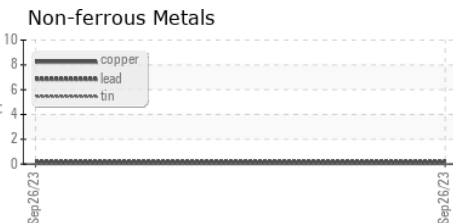
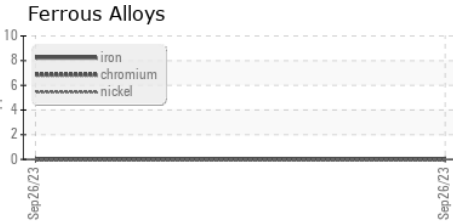


VISUAL	method	limit/base	current	history1	history2
White Metal	scalar	Visual*	NONE	NONE	---
Yellow Metal	scalar	Visual*	NONE	NONE	---
Precipitate	scalar	Visual*	NONE	NONE	---
Silt	scalar	Visual*	NONE	NONE	---
Debris	scalar	Visual*	NONE	NONE	---
Sand/Dirt	scalar	Visual*	NONE	NONE	---
Appearance	scalar	Visual*	NORML	NORML	---
Odor	scalar	Visual*	NORML	NORML	---
Emulsified Water	scalar	Visual*	>0.1	NEG	---
Free Water	scalar	Visual*		NEG	---

FLUID PROPERTIES	method	limit/base	current	history1	history2
Visc @ 40°C	cSt	ASTM D7279(m)	24.1	24.1	---
Visc @ 100°C	cSt	ASTM D7279(m)	4.98	4.9	---
Viscosity Index (VI)	Scale	ASTM D2270*		129	---

SAMPLE IMAGES	method	limit/base	current	history1	history2
Color				no image	no image
Bottom				no image	no image

## GRAPHS



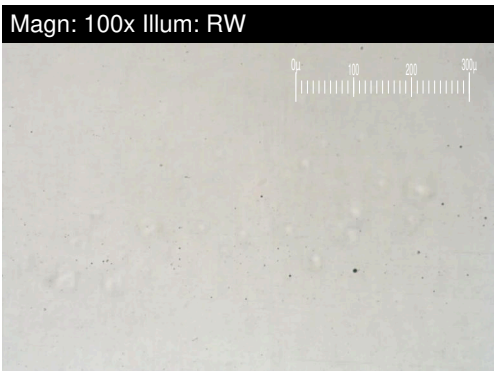
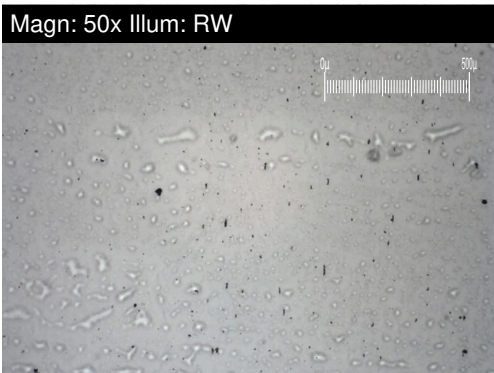
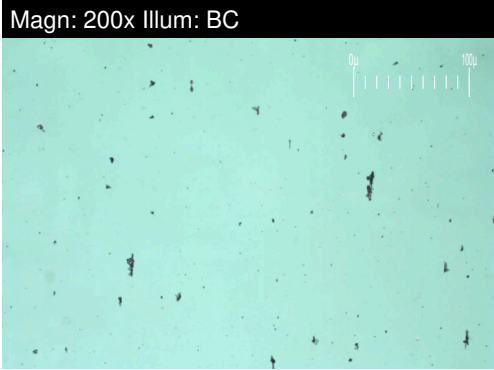
**Laboratory** : WearCheck - C8-1175 Appleby Line, Burlington, ON L7L 5H9  
**Sample No.** : WC0816805 **Received** : 02 Oct 2023  
**Lab Number** : 02586103 **Diagnosed** : 04 Oct 2023  
**Unique Number** : 5655169 **Diagnostician** : Kevin Marson  
**Test Package** : AVI 3

**SKYLINK EXPRESS**  
 9300 AIRPORT ROAD, HANGAR #4  
 MOUNT HOPE, ON  
 CA L0R 1W0  
 Contact: Marc Levesque  
 mlevesque@skylinkepress.com  
 T: (905)973-2789  
 F: (905)679-4242

To discuss this sample report, contact Customer Service at 1-800-268-2131.  
 Test denoted (\*) outside scope of accreditation, (m) method modified, (e) tested at external lab.  
 Validity of results and interpretation are based on the sample and information as supplied.

# FERROGRAPHY REPORT

Machine Id  
**BEECHCRAFT CGSKU (S/N GG32017)**  
 Component  
**Left Jet Turbine**  
 Fluid  
**ESSO EXXON TURBO OIL 2380 (--- QTS)**

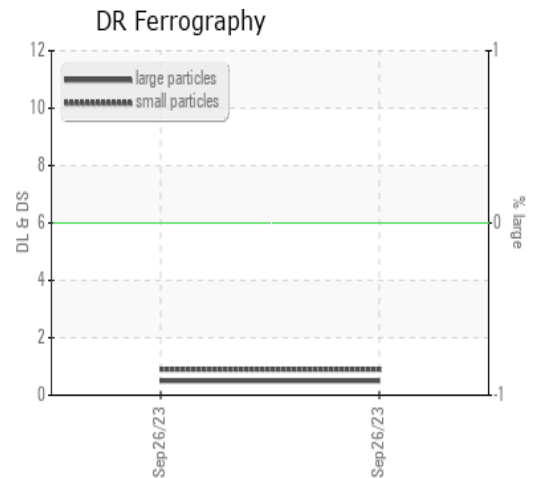


DR-FERROGRAPHY		method	limit/base	current	history1	history2
Large Particles		DR-Ferr*		<b>0.5</b>	---	---
Small Particles		DR-Ferr*		<b>0.9</b>	---	---
Total Particles		DR-Ferr*	>---	<b>1.4</b>	---	---
Large Particles Percentage	%	DR-Ferr*		<b>0</b>	---	---
Severity Index		DR-Ferr*		<b>0</b>	---	---

FERROGRAPHY		method	limit/base	current	history1	history2
Ferrous Rubbing	Scale 0-10	ASTM D7684*		<b>2</b>		
Ferrous Sliding	Scale 0-10	ASTM D7684*				
Ferrous Cutting	Scale 0-10	ASTM D7684*				
Ferrous Rolling	Scale 0-10	ASTM D7684*		<b>1</b>		
Ferrous Break-in	Scale 0-10	ASTM D7684*				
Ferrous Spheres	Scale 0-10	ASTM D7684*				
Ferrous Black Oxides	Scale 0-10	ASTM D7684*				
Ferrous Red Oxides	Scale 0-10	ASTM D7684*				
Ferrous Corrosive	Scale 0-10	ASTM D7684*				
Ferrous Other	Scale 0-10	ASTM D7684*				
Nonferrous Rubbing	Scale 0-10	ASTM D7684*				
Nonferrous Sliding	Scale 0-10	ASTM D7684*				
Nonferrous Cutting	Scale 0-10	ASTM D7684*				
Nonferrous Rolling	Scale 0-10	ASTM D7684*				
Nonferrous Other	Scale 0-10	ASTM D7684*				
Carbonaceous Material	Scale 0-10	ASTM D7684*				
Lubricant Degradation	Scale 0-10	ASTM D7684*				
Sand/Dirt	Scale 0-10	ASTM D7684*		<b>1</b>		
Fibres	Scale 0-10	ASTM D7684*				
Spheres	Scale 0-10	ASTM D7684*				
Other	Scale 0-10	ASTM D7684*		<b>2</b>		

### WEAR

All component wear rates are normal.  
 The direct-reading & analytical ferrographic results are normal indicating no abnormal wear in the system.



*This page left intentionally blank*