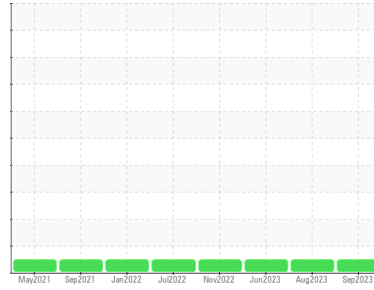




# OIL ANALYSIS REPORT

Sample Rating Trend

**NORMAL**



Area  
**(C-FETU)**  
Machine Id  
**[C-FETU] 760453**  
Component  
**Left Jet Turbine**  
Fluid  
**MOBIL JET OIL 254 (10 LTR)**

## DIAGNOSIS

### Recommendation

Resample at the next service interval to monitor.

### Wear

All component wear rates are normal. The direct-reading & analytical ferrographic results are normal indicating no abnormal wear in the system.

### Contaminants

The water content is negligible. There is no indication of any contamination in the oil.

### Oil Condition

The AN level is acceptable for this fluid. The condition of the oil is suitable for further service.

## SAMPLE INFORMATION

	method	limit/base	current	history1	history2
Sample Number	Client Info		<b>WC0766760</b>	WC0766764	WC0766756
Sample Date	Client Info		<b>26 Sep 2023</b>	28 Aug 2023	29 Jun 2023
TSN	hrs	Client Info	<b>7984</b>	7943	7901
TSO	hrs	Client Info	<b>7984</b>	0	0
Oil Age	hrs	Client Info	<b>0</b>	0	50
Oil Changed		Client Info	<b>N/A</b>	Not Chngd	Changed
Sample Status			<b>NORMAL</b>	NORMAL	NORMAL

## WEAR METALS

	method	limit/base	current	history1	history2
Iron	ppm	ASTM D5185(m) >8	<b>0</b>	<1	0
Chromium	ppm	ASTM D5185(m) >2	<b>0</b>	0	0
Nickel	ppm	ASTM D5185(m) >2	<b>0</b>	<1	0
Titanium	ppm	ASTM D5185(m) >2	<b>0</b>	0	0
Silver	ppm	ASTM D5185(m) >2	<b>&lt;1</b>	0	0
Aluminum	ppm	ASTM D5185(m) >2	<b>0</b>	<1	<1
Lead	ppm	ASTM D5185(m) >3	<b>&lt;1</b>	0	0
Copper	ppm	ASTM D5185(m) >3	<b>&lt;1</b>	0	0
Tin	ppm	ASTM D5185(m) >2	<b>0</b>	0	0
Antimony	ppm	ASTM D5185(m)	<b>0</b>	0	0
Vanadium	ppm	ASTM D5185(m)	<b>0</b>	0	0
Beryllium	ppm	ASTM D5185(m)	<b>0</b>	0	0
Cadmium	ppm	ASTM D5185(m)	<b>0</b>	0	0

## ADDITIVES

	method	limit/base	current	history1	history2
Boron	ppm	ASTM D5185(m) 0	<b>&lt;1</b>	<1	<1
Barium	ppm	ASTM D5185(m) 0	<b>&lt;1</b>	0	0
Molybdenum	ppm	ASTM D5185(m) 0	<b>0</b>	0	0
Manganese	ppm	ASTM D5185(m) 0	<b>0</b>	0	0
Magnesium	ppm	ASTM D5185(m) 0	<b>0</b>	0	0
Calcium	ppm	ASTM D5185(m) 0	<b>0</b>	<1	<1
Phosphorus	ppm	ASTM D5185(m) 3000	<b>3033</b>	3019	2935
Zinc	ppm	ASTM D5185(m) 0	<b>&lt;1</b>	1	2
Sulfur	ppm	ASTM D5185(m) 0	<b>4</b>	3	2
Lithium	ppm	ASTM D5185(m)	<b>&lt;1</b>	<1	<1

## CONTAMINANTS

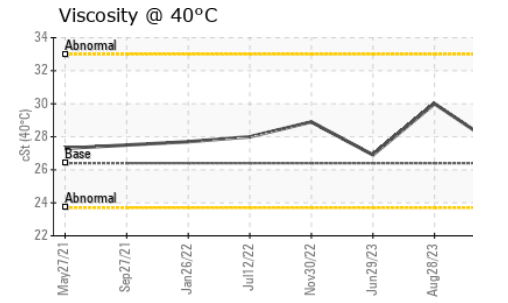
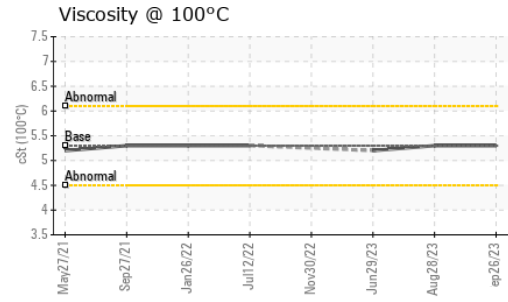
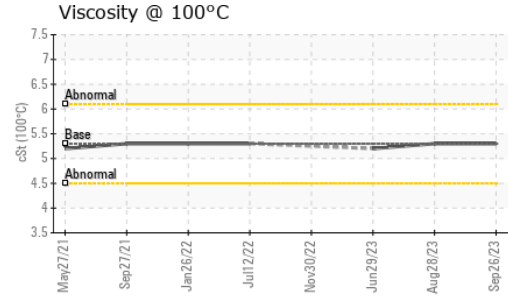
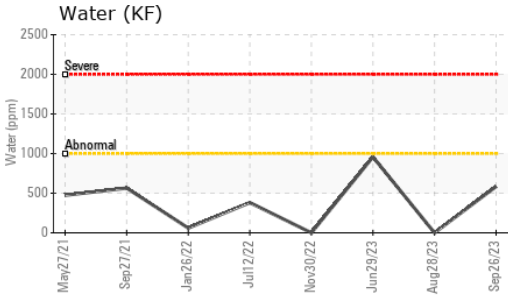
	method	limit/base	current	history1	history2
Silicon	ppm	ASTM D5185(m) >8	<b>&lt;1</b>	<1	<1
Sodium	ppm	ASTM D5185(m)	<b>&lt;1</b>	<1	0
Potassium	ppm	ASTM D5185(m) >20	<b>0</b>	<1	<1
Water	%	ASTM D6304* >0.1	<b>0.058</b>	0.00	0.095
ppm Water	ppm	ASTM D6304* >1000	<b>584.6</b>	0.00	957.7

## FLUID DEGRADATION

	method	limit/base	current	history1	history2
Acid Number (AN)	mg KOH/g	ASTM D974* 0.08	<b>0.12</b>	0.09	0.13



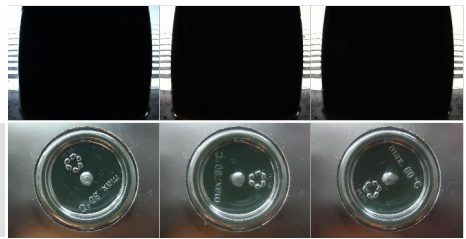
# OIL ANALYSIS REPORT



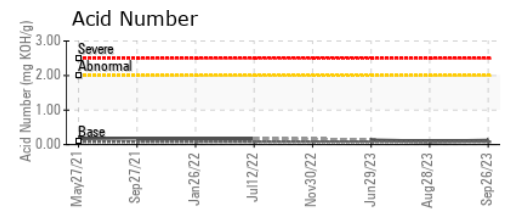
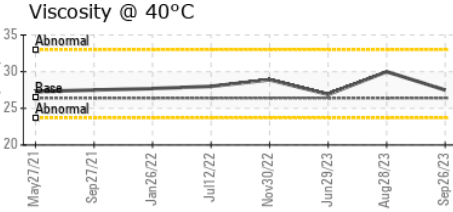
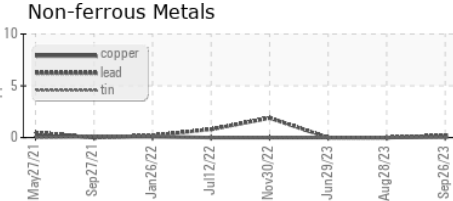
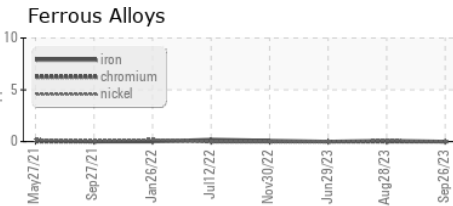
VISUAL	method	limit/base	current	history1	history2
White Metal	scalar	Visual*	NONE	NONE	NONE
Yellow Metal	scalar	Visual*	NONE	NONE	NONE
Precipitate	scalar	Visual*	NONE	NONE	NONE
Silt	scalar	Visual*	NONE	NONE	NONE
Debris	scalar	Visual*	NONE	NONE	NONE
Sand/Dirt	scalar	Visual*	NONE	NONE	NONE
Appearance	scalar	Visual*	NORML	NORML	NORML
Odor	scalar	Visual*	NORML	NORML	NORML
Emulsified Water	scalar	Visual*	>0.1	NEG	NEG
Free Water	scalar	Visual*		NEG	NEG

FLUID PROPERTIES	method	limit/base	current	history1	history2	
Visc @ 40°C	cSt	ASTM D7279(m)	26.4	27.5	30.0	26.9
Visc @ 100°C	cSt	ASTM D7279(m)	5.3	5.3	5.3	5.2
Viscosity Index (VI)	Scale	ASTM D2270*	137	128	109	126

SAMPLE IMAGES	method	limit/base	current	history1	history2
Color					
Bottom					



## GRAPHS



**Laboratory** : WearCheck - C8-1175 Appleby Line, Burlington, ON L7L 5H9  
**Sample No.** : WC0766760 **Received** : 02 Oct 2023  
**Lab Number** : 02586106 **Diagnosed** : 06 Oct 2023  
**Unique Number** : 5655172 **Diagnostician** : Kevin Marson  
**Test Package** : AVI 3

**ITPS Canada**  
 2465 Aviation Lane., Unit 1  
 London, ON  
 CA N5V 3Z9  
 Contact: Shannon Hickey  
 shannon.hickey@itpscanada.com  
 T:  
 F:

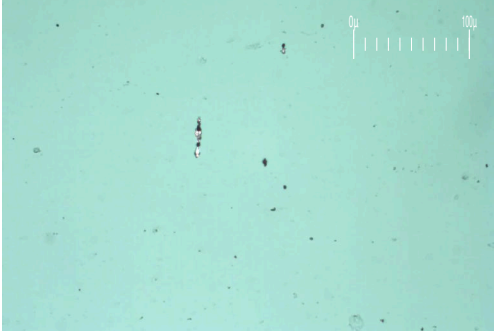
To discuss this sample report, contact Customer Service at 1-800-268-2131.  
 Test denoted (\*) outside scope of accreditation, (m) method modified, (e) tested at external lab.  
 Validity of results and interpretation are based on the sample and information as supplied.



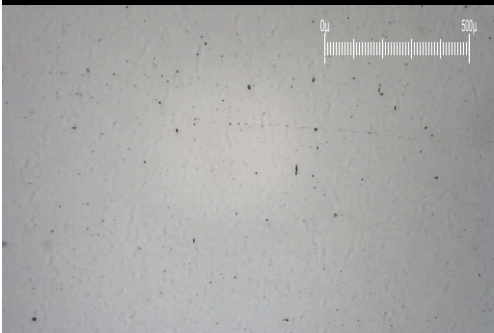
# FERROGRAPHY REPORT

Area  
**(C-FETU)**  
 Machine Id  
**[C-FETU] 760453**  
 Component  
**Left Jet Turbine**  
 Fluid  
**MOBIL JET OIL 254 (10 LTR)**

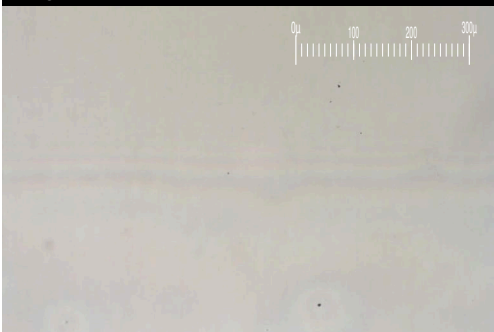
Magn: 200x Illum: BC



Magn: 50x Illum: RW



Magn: 100x Illum: RW

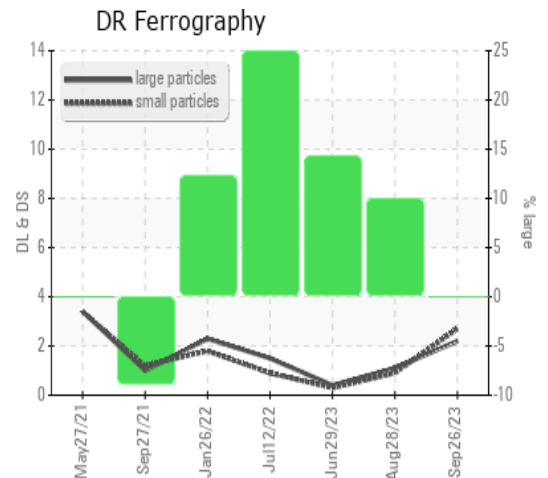


DR-FERROGRAPHY		method	limit/base	current	history1	history2
Large Particles		DR-Ferr*		<b>2.2</b>	1.1	0.4
Small Particles		DR-Ferr*		<b>2.7</b>	0.9	0.3
Total Particles		DR-Ferr*	>---	<b>4.9</b>	2	0.7
Large Particles Percentage	%	DR-Ferr*		<b>0</b>	10	14.3
Severity Index		DR-Ferr*		<b>1</b>	0	0

FERROGRAPHY		method	limit/base	current	history1	history2
Ferrous Rubbing	Scale 0-10	ASTM D7684*		1	1	1
Ferrous Sliding	Scale 0-10	ASTM D7684*				
Ferrous Cutting	Scale 0-10	ASTM D7684*				
Ferrous Rolling	Scale 0-10	ASTM D7684*		1		1
Ferrous Break-in	Scale 0-10	ASTM D7684*				
Ferrous Spheres	Scale 0-10	ASTM D7684*				
Ferrous Black Oxides	Scale 0-10	ASTM D7684*				
Ferrous Red Oxides	Scale 0-10	ASTM D7684*				
Ferrous Corrosive	Scale 0-10	ASTM D7684*				
Ferrous Other	Scale 0-10	ASTM D7684*				
Nonferrous Rubbing	Scale 0-10	ASTM D7684*				
Nonferrous Sliding	Scale 0-10	ASTM D7684*				
Nonferrous Cutting	Scale 0-10	ASTM D7684*				
Nonferrous Rolling	Scale 0-10	ASTM D7684*				
Nonferrous Other	Scale 0-10	ASTM D7684*				
Carbonaceous Material	Scale 0-10	ASTM D7684*				
Lubricant Degradation	Scale 0-10	ASTM D7684*				
Sand/Dirt	Scale 0-10	ASTM D7684*		1	1	1
Fibres	Scale 0-10	ASTM D7684*				
Spheres	Scale 0-10	ASTM D7684*				
Other	Scale 0-10	ASTM D7684*		1	1	1

## WEAR

All component wear rates are normal. The direct-reading & analytical ferrographic results are normal indicating no abnormal wear in the system.



*This page left intentionally blank*